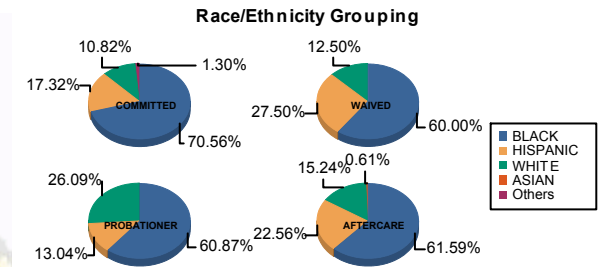




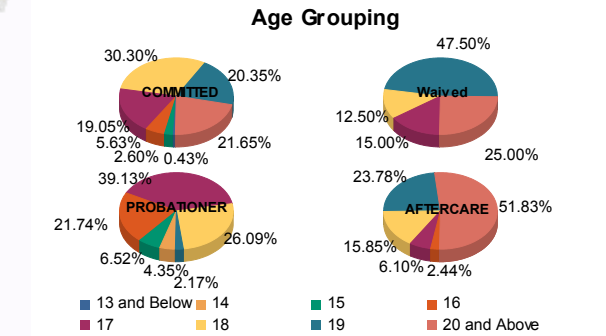
Juvenile Demographics and Statistics

Race/ Ethnicity	COMMITTED		WAIVED		PROBATIONER		AFTERCARE		Total									
	MALE	FEMALE	MALE	FEMALE	MALE	FEMALE	MALE	FEMALE										
BLACK	159	71.62%	4	44.44%	23	58.97%	1	100.00%	27	62.79%	1	33.33%	97	62.58%	4	44.44%	316	65.70%
HISPANIC	38	17.12%	2	22.22%	11	28.21%	0	0.00%	5	11.63%	1	33.33%	35	22.58%	2	22.22%	94	19.54%
WHITE	22	9.91%	3	33.33%	5	12.82%	0	0.00%	11	25.58%	1	33.33%	22	14.19%	3	33.33%	67	13.93%
ASIAN	0	0.00%	0	0.00%	0	0.00%	0	0.00%	0	0.00%	0	0.00%	1	0.65%	0	0.00%	1	0.21%
Others	3	1.35%	0	0.00%	0	0.00%	0	0.00%	0	0.00%	0	0.00%	0	0.00%	0	0.00%	3	0.62%
Total	222	100.00%	9	100.00%	39	100.00%	1	100.00%	43	100.00%	3	100.00%	155	100.00%	9	100.00%	481	100.00%



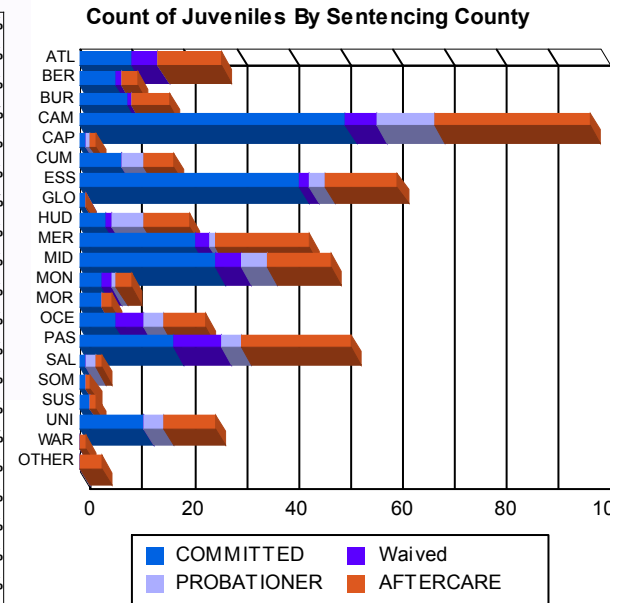
Age

13 and Below	1	0.45%	0	0.00%	0	0.00%	0	0.00%	0	0.00%	0	0.00%	0	0.00%	0	0.00%	1	0.21%
14	0	0.00%	0	0.00%	0	0.00%	0	0.00%	2	4.65%	0	0.00%	0	0.00%	0	0.00%	2	0.42%
15	6	2.70%	0	0.00%	0	0.00%	0	0.00%	3	6.98%	0	0.00%	0	0.00%	0	0.00%	9	1.87%
16	13	5.86%	0	0.00%	0	0.00%	0	0.00%	9	20.93%	1	33.33%	3	1.94%	1	11.11%	27	5.61%
17	42	18.92%	2	22.22%	6	15.38%	0	0.00%	17	39.53%	1	33.33%	9	5.81%	1	11.11%	78	16.22%
18	68	30.63%	2	22.22%	5	12.82%	0	0.00%	11	25.58%	1	33.33%	25	16.13%	1	11.11%	113	23.49%
19	44	19.82%	3	33.33%	18	46.15%	1	100.00%	1	2.33%	0	0.00%	38	24.52%	1	11.11%	106	22.04%
20 and Above	48	21.62%	2	22.22%	10	25.64%	0	0.00%	0	0.00%	0	0.00%	80	51.61%	5	55.56%	145	30.15%
Total	222	100.00%	9	100.00%	39	100.00%	1	100.00%	43	100.00%	3	100.00%	155	100.00%	9	100.00%	481	100.00%
Average Age	18.39		18.78		18.87		19.00		16.81		17.00		20.42		19.56		18.96	



Sentencing County

ATL	10	4.50%	0	0.00%	5	12.82%	0	0.00%	0	0.00%	0	0.00%	11	7.10%	1	11.11%	27	5.61%
BER	7	3.15%	0	0.00%	1	2.56%	0	0.00%	0	0.00%	0	0.00%	3	1.94%	0	0.00%	11	2.29%
BUR	7	3.15%	2	22.22%	1	2.56%	0	0.00%	0	0.00%	0	0.00%	6	3.87%	1	11.11%	17	3.53%
CAM	48	21.62%	3	33.33%	5	12.82%	1	100.00%	8	18.60%	3	100.00%	28	18.06%	2	22.22%	98	20.37%
CAP	1	0.45%	0	0.00%	0	0.00%	0	0.00%	1	2.33%	0	0.00%	1	0.65%	0	0.00%	3	0.62%
CUM	8	3.60%	0	0.00%	0	0.00%	0	0.00%	4	9.30%	0	0.00%	6	3.87%	0	0.00%	18	3.74%
ESS	42	18.92%	0	0.00%	2	5.13%	0	0.00%	3	6.98%	0	0.00%	13	8.39%	1	11.11%	61	12.68%
GLO	1	0.45%	0	0.00%	0	0.00%	0	0.00%	0	0.00%	0	0.00%	0	0.00%	0	0.00%	1	0.21%
HUD	5	2.25%	0	0.00%	1	2.56%	0	0.00%	6	13.95%	0	0.00%	9	5.81%	0	0.00%	21	4.37%
MER	20	9.01%	2	22.22%	3	7.69%	0	0.00%	1	2.33%	0	0.00%	17	10.97%	1	11.11%	44	9.15%
MID	24	10.81%	2	22.22%	5	12.82%	0	0.00%	5	11.63%	0	0.00%	12	7.74%	0	0.00%	48	9.98%
MON	4	1.80%	0	0.00%	2	5.13%	0	0.00%	1	2.33%	0	0.00%	3	1.94%	0	0.00%	10	2.08%
MOR	4	1.80%	0	0.00%	0	0.00%	0	0.00%	0	0.00%	0	0.00%	2	1.29%	0	0.00%	6	1.25%
OCE	7	3.15%	0	0.00%	5	12.82%	0	0.00%	4	9.30%	0	0.00%	8	5.16%	0	0.00%	24	4.99%
PAS	18	8.11%	0	0.00%	9	23.08%	0	0.00%	4	9.30%	0	0.00%	20	12.90%	1	11.11%	52	10.81%
SAL	1	0.45%	0	0.00%	0	0.00%	0	0.00%	2	4.65%	0	0.00%	1	0.65%	0	0.00%	4	0.83%
SOM	1	0.45%	0	0.00%	0	0.00%	0	0.00%	0	0.00%	0	0.00%	1	0.65%	0	0.00%	2	0.42%
SUS	2	0.90%	0	0.00%	0	0.00%	0	0.00%	0	0.00%	0	0.00%	0	0.00%	1	11.11%	3	0.62%
UNI	12	5.41%	0	0.00%	0	0.00%	0	0.00%	4	9.30%	0	0.00%	9	5.81%	1	11.11%	26	5.41%
WAR	0	0.00%	0	0.00%	0	0.00%	0	0.00%	0	0.00%	0	0.00%	1	0.65%	0	0.00%	1	0.21%
OTHER	0	0.00%	0	0.00%	0	0.00%	0	0.00%	0	0.00%	0	0.00%	4	2.58%	0	0.00%	4	0.83%
Total	222	100.00%	9	100.00%	39	100.00%	1	100.00%	43	100.00%	3	100.00%	155	100.00%	9	100.00%	481	100.00%





Juvenile Demographics and Statistics

Current Grade	COMMITTED		WAIVED		PROBATIONER		Total
	MALE	FEMALE	MALE	FEMALE	MALE	FEMALE	
7	0 (0.00%)	0 (0.00%)	0 (0.00%)	0 (0.00%)	1 (2.33%)	0 (0.00%)	1 (0.32%)
8	1 (0.45%)	0 (0.00%)	0 (0.00%)	0 (0.00%)	1 (2.33%)	0 (0.00%)	2 (0.63%)
9	21 (9.46%)	0 (0.00%)	1 (2.56%)	0 (0.00%)	10 (23.26%)	0 (0.00%)	32 (10.09%)
10	33 (14.86%)	3 (33.33%)	5 (12.82%)	0 (0.00%)	13 (30.23%)	0 (0.00%)	54 (17.03%)
11	37 (16.67%)	3 (33.33%)	4 (10.26%)	0 (0.00%)	12 (27.91%)	1 (33.33%)	57 (17.98%)
12	29 (13.06%)	1 (11.11%)	7 (17.95%)	0 (0.00%)	2 (4.65%)	0 (0.00%)	39 (12.30%)
HSG	91 (40.99%)	0 (0.00%)	20 (51.28%)	1 (100.00%)	3 (6.98%)	1 (33.33%)	116 (36.59%)
GED	6 (2.70%)	0 (0.00%)	0 (0.00%)	0 (0.00%)	0 (0.00%)	0 (0.00%)	6 (1.89%)
Others **	4 (1.80%)	2 (22.22%)	2 (5.13%)	0 (0.00%)	1 (2.33%)	1 (33.33%)	10 (3.15%)
Total	222 (100.00%)	9 (100.00%)	39 (100.00%)	1 (100.00%)	43 (100.00%)	3 (100.00%)	317 (100.00%)

** Includes Aged Out Juveniles and Pending Records

Special Education Services

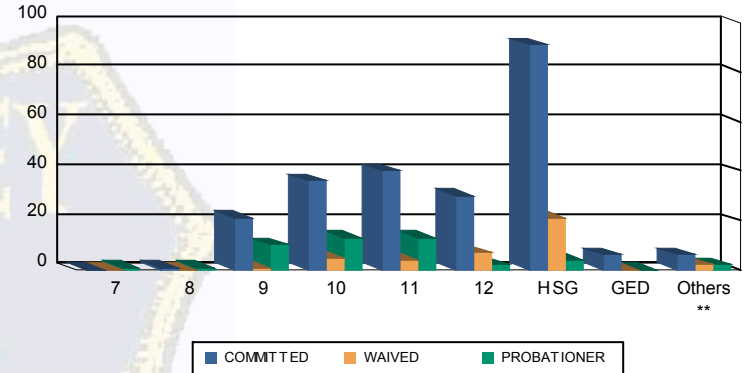
Yes	107 (48.20%)	4 (44.44%)	10 (25.64%)	1 (100.00%)	21 (48.84%)	0 (0.00%)	143 (45.11%)
No	115 (51.80%)	5 (55.56%)	28 (71.79%)	0 (0.00%)	22 (51.16%)	3 (100.00%)	173 (54.57%)
Pending	0 (0.00%)	0 (0.00%)	1 (2.56%)	0 (0.00%)	0 (0.00%)	0 (0.00%)	1 (0.32%)
Total	222 (100.00%)	9 (100.00%)	39 (100.00%)	1 (100.00%)	43 (100.00%)	3 (100.00%)	317 (100.00%)

Offense Categories

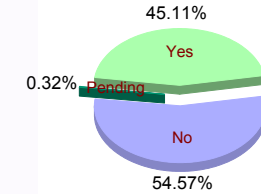
Drug	79 (6.30%)	5 (10.20%)	5 (7.69%)	1 (9.09%)	17 (11.26%)	0 (0.00%)	107 (6.94%)
Persons	373 (29.74%)	15 (30.61%)	32 (49.23%)	3 (27.27%)	30 (19.87%)	3 (27.27%)	456 (29.59%)
Property	221 (17.62%)	7 (14.29%)	4 (6.15%)	2 (18.18%)	29 (19.21%)	1 (9.09%)	264 (17.13%)
Public Order	162 (12.92%)	8 (16.33%)	6 (9.23%)	2 (18.18%)	19 (12.58%)	3 (27.27%)	200 (12.98%)
VOP	264 (21.05%)	9 (18.37%)	2 (3.08%)	2 (18.18%)	41 (27.15%)	3 (27.27%)	321 (20.83%)
Weapons	141 (11.24%)	4 (8.16%)	16 (24.62%)	0 (0.00%)	14 (9.27%)	0 (0.00%)	175 (11.36%)
Others Offenses	14 (1.12%)	1 (2.04%)	0 (0.00%)	1 (9.09%)	1 (0.66%)	1 (9.09%)	18 (1.17%)
Total *	1,254 (100.00%)	49 (100.00%)	65 (100.00%)	11 (100.00%)	151 (100.00%)	11 (100.00%)	1,541 (100.00%)

* Juveniles may have multiple offenses

Current Grade



Special Education



Offense Categories

