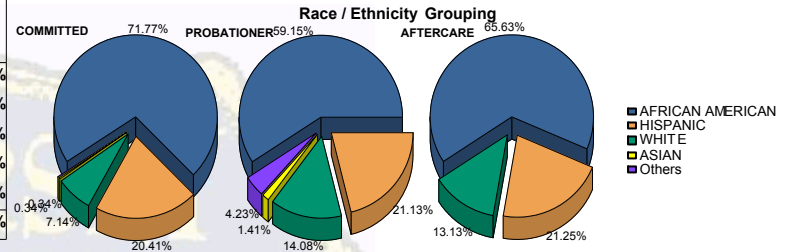




Juvenile Demographics and Statistics

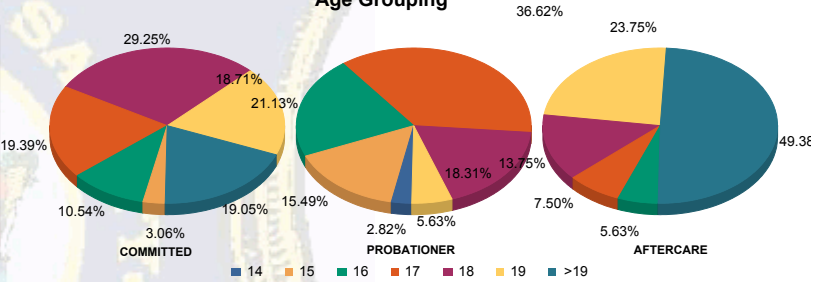
Race/Ethnicity	COMMITTED		PROBATIONER		AFTERCARE		Total							
	MALE	FEMALE	MALE	FEMALE	MALE	FEMALE								
AFRICAN AMERICAN	203	71.73%	8	72.73%	40	62.50%	2	28.57%	102	67.55%	3	33.33%	358	68.19%
HISPANIC	60	21.20%	0	0.00%	14	21.88%	1	14.29%	31	20.53%	3	33.33%	109	20.76%
WHITE	18	6.36%	3	27.27%	6	9.38%	4	57.14%	18	11.92%	3	33.33%	52	9.90%
ASIAN	1	0.35%	0	0.00%	1	1.56%	0	0.00%	0	0.00%	0	0.00%	2	0.38%
Others	1	0.35%	0	0.00%	3	4.69%	0	0.00%	0	0.00%	0	0.00%	4	0.76%
Total	283	100.00%	11	100.00%	64	100.00%	7	100.00%	151	100.00%	9	100.00%	525	100.00%



Age

Age	COMMITTED	PROBATIONER	AFTERCARE	Total
14	0	2	0	2
15	9	2	0	20
16	29	15	0	55
17	55	25	10	95
18	82	12	21	121
19	54	1	37	97
>19	54	0	74	135
Total	283	64	9	525

Age Grouping

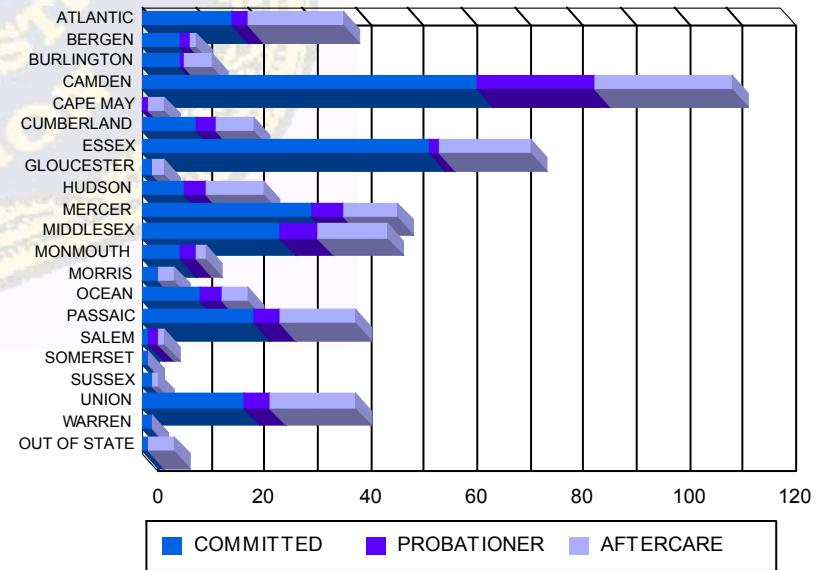


Average Age	COMMITTED	PROBATIONER	AFTERCARE	Total
Average Age	18.22	18.00	16.61	17.43
				20.17
				19.89
				18.60

Sentencing County

Sentencing County	COMMITTED	PROBATIONER	AFTERCARE	Total
ATLANTIC	17	3	17	38
BERGEN	7	2	1	10
BURLINGTON	7	1	5	13
CAMDEN	58	17	25	111
CAPE MAY	0	1	2	4
CUMBERLAND	10	4	6	21
ESSEX	51	2	17	73
GLOUCESTER	2	0	2	4
HUDSON	8	4	11	23
MERCER	30	6	9	48
MIDDLESEX	26	6	12	46
MONMOUTH	7	3	2	12
MORRIS	3	0	3	6
OCEAN	11	4	5	20
PASSAIC	21	4	13	40
SALEM	1	2	1	4
SOMERSET	1	0	0	1
SUSSEX	2	0	0	3
UNION	18	5	15	40
WARREN	2	0	0	2
OUT OF STATE	1	0	5	6
Total	283	64	9	525

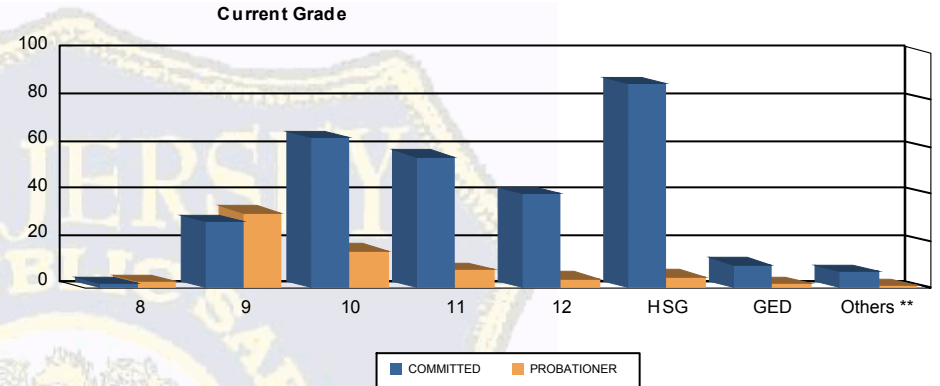
Count of Juveniles By Sentencing County





Juvenile Demographics and Statistics

Current Grade	COMMITTED		PROBATIONER		Total
	MALE	FEMALE	MALE	FEMALE	
8	2 (0.71%)	0 0.00%	3 (4.69%)	0 0.00%	5 (1.37%)
9	26 (9.19%)	2 (18.18%)	30 (46.88%)	2 (28.57%)	60 (16.44%)
10	62 (21.91%)	2 (18.18%)	16 (25.00%)	0 0.00%	80 (21.92%)
11	53 (18.73%)	3 (27.27%)	8 (12.50%)	0 0.00%	64 (17.53%)
12	39 (13.78%)	1 (9.09%)	3 (4.69%)	1 (14.29%)	44 (12.05%)
HSG	84 (29.68%)	3 (27.27%)	3 (4.69%)	2 (28.57%)	92 (25.21%)
GED	10 (3.53%)	0 0.00%	0 0.00%	2 (28.57%)	12 (3.29%)
Others **	7 (2.47%)	0 0.00%	1 (1.56%)	0 0.00%	8 (2.19%)
Total	283 (100.00%)	11 (100.00%)	64 (100.00%)	7 (100.00%)	365 (100.00%)

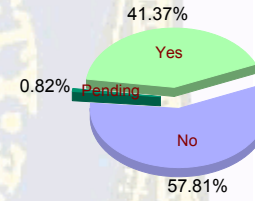


** Includes Aged Out Juveniles and Pending Records

Special Education Services

Yes	116 (40.99%)	7 (63.64%)	28 (43.75%)	0 0.00%	151 (41.37%)
No	165 (58.30%)	4 (36.36%)	35 (54.69%)	7 (100.00%)	211 (57.81%)
Pending	2 (0.71%)	0 0.00%	1 (1.56%)	0 0.00%	3 (0.82%)
Total	283 (100.00%)	11 (100.00%)	64 (100.00%)	7 (100.00%)	365 (100.00%)

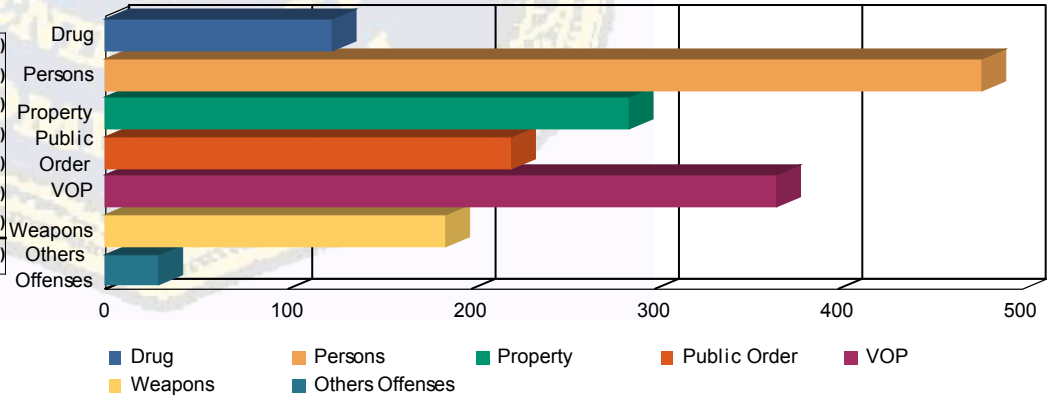
Special Education



Offense Categories

Drug	100 (7.09%)	4 (5.97%)	16 (8.47%)	3 (13.04%)	123 (7.28%)
Persons	418 (29.65%)	13 (19.40%)	43 (22.75%)	4 (17.39%)	478 (28.30%)
Property	247 (17.52%)	11 (16.42%)	27 (14.29%)	1 (4.35%)	286 (16.93%)
Public Order	175 (12.41%)	14 (20.90%)	26 (13.76%)	6 (26.09%)	221 (13.08%)
VOP	292 (20.71%)	15 (22.39%)	51 (26.98%)	8 (34.78%)	366 (21.67%)
Weapons	156 (11.06%)	9 (13.43%)	20 (10.58%)	1 (4.35%)	186 (11.01%)
Others Offenses	22 (1.56%)	1 (1.49%)	6 (3.17%)	0 0.00%	29 (1.72%)
Total *	1,410 (100.00%)	67 (100.00%)	189 (100.00%)	23 (100.00%)	1,689 (100.00%)

Offense Categories



* Juveniles may have multiple offenses