



Juvenile Demographics and Statistics

Race/ Ethnicity	COMMITTED		WAIVED		PROBATIONER		AFTERCARE		Total									
	MALE	FEMALE	MALE	FEMALE	MALE	FEMALE	MALE	FEMALE										
BLACK	138	73.80%	7	53.85%	28	50.91%	3	100.00%	33	63.46%	1	50.00%	121	71.60%	3	37.50%	334	68.30%
HISPANIC	31	16.58%	0	0.00%	18	32.73%	0	0.00%	13	25.00%	0	0.00%	28	16.57%	1	12.50%	91	18.61%
WHITE	17	9.09%	6	46.15%	8	14.55%	0	0.00%	6	11.54%	1	50.00%	19	11.24%	4	50.00%	61	12.47%
Others	1	0.53%	0	0.00%	1	1.82%	0	0.00%	0	0.00%	0	0.00%	1	0.59%	0	0.00%	3	0.61%
Total	187	100.00%	13	100.00%	55	100.00%	3	100.00%	52	100.00%	2	100.00%	169	100.00%	8	100.00%	489	100.00%

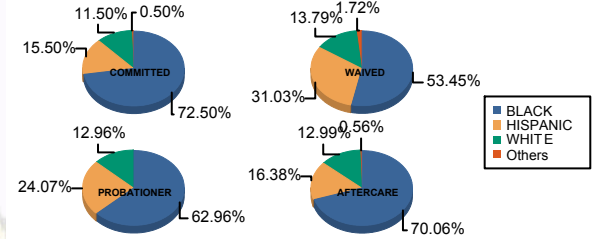
Age

13 and Below	0	0.00%	0	0.00%	0	0.00%	0	0.00%	1	1.92%	0	0.00%	0	0.00%	0	0.00%	1	0.20%
14	1	0.53%	0	0.00%	0	0.00%	0	0.00%	3	5.77%	0	0.00%	1	0.59%	0	0.00%	5	1.02%
15	4	2.14%	0	0.00%	0	0.00%	0	0.00%	6	11.54%	0	0.00%	1	0.59%	0	0.00%	11	2.25%
16	18	9.63%	2	15.38%	5	9.09%	0	0.00%	12	23.08%	0	0.00%	3	1.78%	1	12.50%	41	8.38%
17	32	17.11%	4	30.77%	5	9.09%	0	0.00%	15	28.85%	0	0.00%	9	5.33%	0	0.00%	65	13.29%
18	59	31.55%	2	15.38%	17	30.91%	0	0.00%	15	28.85%	1	50.00%	28	16.57%	0	0.00%	122	24.95%
19	39	20.86%	2	15.38%	12	21.82%	1	33.33%	0	0.00%	0	0.00%	36	21.30%	1	12.50%	91	18.61%
20 and Above	34	18.18%	3	23.08%	16	29.09%	2	66.67%	0	0.00%	1	50.00%	91	53.85%	6	75.00%	153	31.29%
Total	187	100.00%	13	100.00%	55	100.00%	3	100.00%	52	100.00%	2	100.00%	169	100.00%	8	100.00%	489	100.00%
Average Age	18.28		18.23		18.62		19.67		16.58		19.00		20.37		20.88		18.91	

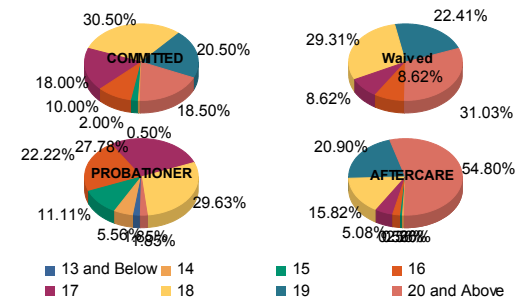
Sentencing County

ATL	11	5.88%	0	0.00%	7	12.73%	0	0.00%	0	0.00%	0	0.00%	6	3.55%	1	12.50%	25	5.11%
BER	4	2.14%	0	0.00%	0	0.00%	0	0.00%	2	3.85%	0	0.00%	3	1.78%	0	0.00%	9	1.84%
BUR	9	4.81%	1	7.69%	2	3.64%	0	0.00%	3	5.77%	0	0.00%	3	1.78%	1	12.50%	19	3.89%
CAM	39	20.86%	3	23.08%	7	12.73%	3	100.00%	12	23.08%	1	50.00%	36	21.30%	1	12.50%	102	20.86%
CAP	0	0.00%	0	0.00%	0	0.00%	0	0.00%	1	1.92%	0	0.00%	1	0.59%	0	0.00%	2	0.41%
CUM	6	3.21%	0	0.00%	0	0.00%	0	0.00%	2	3.85%	0	0.00%	3	1.78%	0	0.00%	11	2.25%
ESS	34	18.18%	0	0.00%	4	7.27%	0	0.00%	4	7.69%	0	0.00%	23	13.61%	1	12.50%	66	13.50%
GLO	0	0.00%	0	0.00%	0	0.00%	0	0.00%	1	1.92%	0	0.00%	1	0.59%	0	0.00%	2	0.41%
HUD	3	1.60%	0	0.00%	0	0.00%	0	0.00%	6	11.54%	0	0.00%	10	5.92%	0	0.00%	19	3.89%
HUN	1	0.53%	0	0.00%	0	0.00%	0	0.00%	0	0.00%	0	0.00%	0	0.00%	0	0.00%	1	0.20%
MER	11	5.88%	2	15.38%	4	7.27%	0	0.00%	2	3.85%	0	0.00%	18	10.65%	0	0.00%	37	7.57%
MID	25	13.37%	3	23.08%	11	20.00%	0	0.00%	1	1.92%	0	0.00%	19	11.24%	0	0.00%	59	12.07%
MON	5	2.67%	0	0.00%	4	7.27%	0	0.00%	0	0.00%	0	0.00%	2	1.18%	0	0.00%	11	2.25%
MOR	2	1.07%	0	0.00%	0	0.00%	0	0.00%	0	0.00%	0	0.00%	0	0.00%	1	12.50%	3	0.61%
OCE	2	1.07%	0	0.00%	3	5.45%	0	0.00%	1	1.92%	0	0.00%	8	4.73%	0	0.00%	14	2.86%
PAS	21	11.23%	2	15.38%	13	23.64%	0	0.00%	8	15.38%	1	50.00%	20	11.83%	1	12.50%	66	13.50%
SAL	0	0.00%	0	0.00%	0	0.00%	0	0.00%	0	0.00%	0	0.00%	1	0.59%	0	0.00%	1	0.20%
SOM	1	0.53%	0	0.00%	0	0.00%	0	0.00%	0	0.00%	0	0.00%	0	0.00%	0	0.00%	1	0.20%
SUS	0	0.00%	0	0.00%	0	0.00%	0	0.00%	0	0.00%	0	0.00%	1	0.59%	1	12.50%	2	0.41%
UNI	13	6.95%	2	15.38%	0	0.00%	0	0.00%	9	17.31%	0	0.00%	9	5.33%	1	12.50%	34	6.95%
OTHER	0	0.00%	0	0.00%	0	0.00%	0	0.00%	0	0.00%	0	0.00%	5	2.96%	0	0.00%	5	1.02%
Total	187	100.00%	13	100.00%	55	100.00%	3	100.00%	52	100.00%	2	100.00%	169	100.00%	8	100.00%	489	100.00%

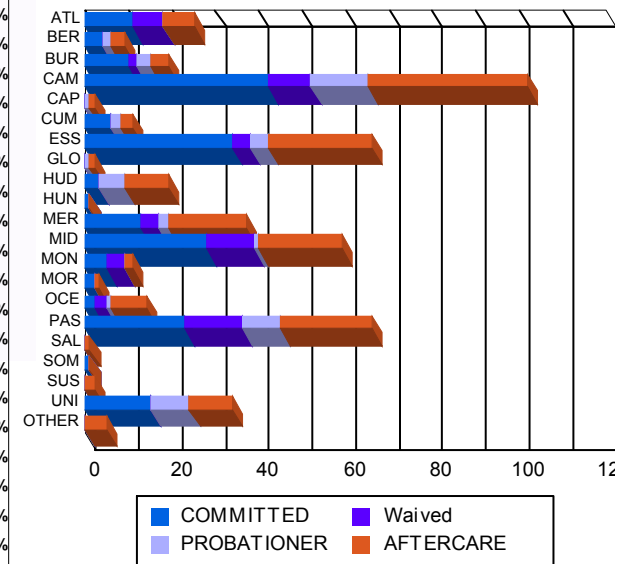
Race/Ethnicity Grouping



Age Grouping



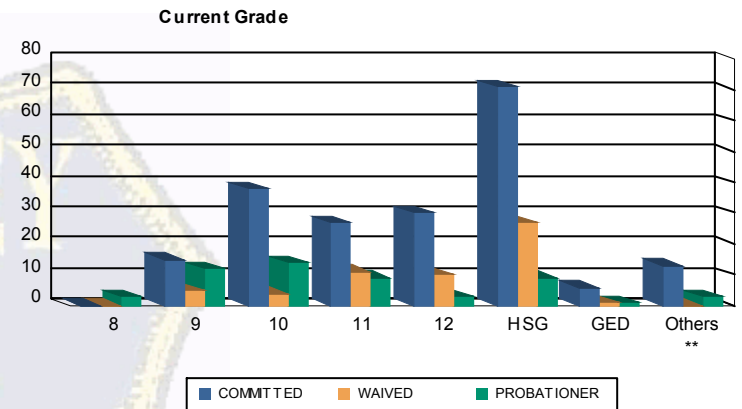
Count of Juveniles By Sentencing County





Juvenile Demographics and Statistics

Current Grade	COMMITTED		WAIVED		PROBATIONER		Total
	MALE	FEMALE	MALE	FEMALE	MALE	FEMALE	
8	0 (0.00%)	0 (0.00%)	0 (0.00%)	0 (0.00%)	3 (5.77%)	0 (0.00%)	3 (0.96%)
9	13 (6.95%)	2 (15.38%)	5 (9.09%)	0 (0.00%)	12 (23.08%)	0 (0.00%)	32 (10.26%)
10	32 (17.11%)	6 (46.15%)	4 (7.27%)	0 (0.00%)	14 (26.92%)	0 (0.00%)	56 (17.95%)
11	26 (13.90%)	1 (7.69%)	11 (20.00%)	0 (0.00%)	9 (17.31%)	0 (0.00%)	47 (15.06%)
12	29 (15.51%)	1 (7.69%)	10 (18.18%)	0 (0.00%)	3 (5.77%)	0 (0.00%)	43 (13.78%)
HSG	69 (36.90%)	2 (15.38%)	24 (43.64%)	3 (100.00%)	7 (13.46%)	2 (100.00%)	107 (34.29%)
GED	6 (3.21%)	0 (0.00%)	1 (1.82%)	0 (0.00%)	1 (1.92%)	0 (0.00%)	8 (2.56%)
Others **	12 (6.42%)	1 (7.69%)	0 (0.00%)	0 (0.00%)	3 (5.77%)	0 (0.00%)	16 (5.13%)
Total	187 (100.00%)	13 (100.00%)	55 (100.00%)	3 (100.00%)	52 (100.00%)	2 (100.00%)	312 (100.00%)

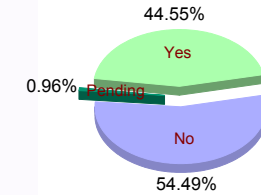


** Includes Aged Out Juveniles and Pending Records

Special Education Services

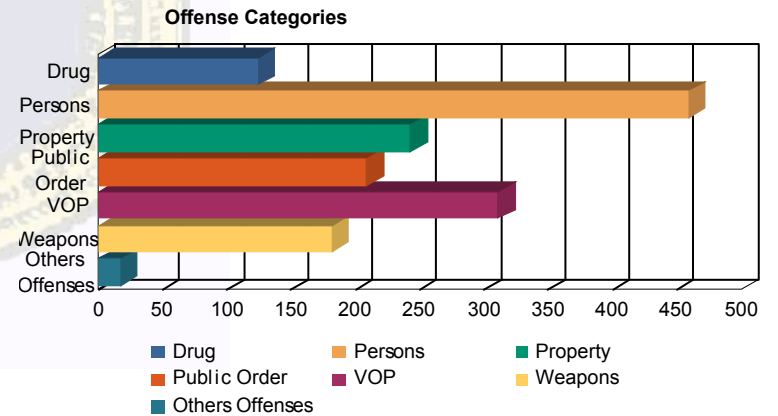
Yes	82 (43.85%)	3 (23.08%)	24 (43.64%)	2 (66.67%)	27 (51.92%)	1 (50.00%)	139 (44.55%)
No	104 (55.61%)	10 (76.92%)	31 (56.36%)	1 (33.33%)	23 (44.23%)	1 (50.00%)	170 (54.49%)
Pending	1 (0.53%)	0 (0.00%)	0 (0.00%)	0 (0.00%)	2 (3.85%)	0 (0.00%)	3 (0.96%)
Total	187 (100.00%)	13 (100.00%)	55 (100.00%)	3 (100.00%)	52 (100.00%)	2 (100.00%)	312 (100.00%)

Special Education



Offense Categories

Drug	101 (8.18%)	7 (9.72%)	4 (4.12%)	1 (7.14%)	11 (8.87%)	0 (0.00%)	124 (8.03%)
Persons	357 (28.91%)	16 (22.22%)	51 (52.58%)	5 (35.71%)	29 (23.39%)	1 (33.33%)	459 (29.71%)
Property	203 (16.44%)	12 (16.67%)	7 (7.22%)	2 (14.29%)	19 (15.32%)	0 (0.00%)	243 (15.73%)
Public Order	165 (13.36%)	14 (19.44%)	12 (12.37%)	2 (14.29%)	16 (12.90%)	0 (0.00%)	209 (13.53%)
VOP	254 (20.57%)	16 (22.22%)	6 (6.19%)	2 (14.29%)	31 (25.00%)	2 (66.67%)	311 (20.13%)
Weapons	142 (11.50%)	6 (8.33%)	16 (16.49%)	1 (7.14%)	17 (13.71%)	0 (0.00%)	182 (11.78%)
Others Offenses	13 (1.05%)	1 (1.39%)	1 (1.03%)	1 (7.14%)	1 (0.81%)	0 (0.00%)	17 (1.10%)
Total *	1,235 (100.00%)	72 (100.00%)	97 (100.00%)	14 (100.00%)	124 (100.00%)	3 (100.00%)	1,545 (100.00%)



* Juveniles may have multiple offenses