



Juvenile Demographics and Statistics

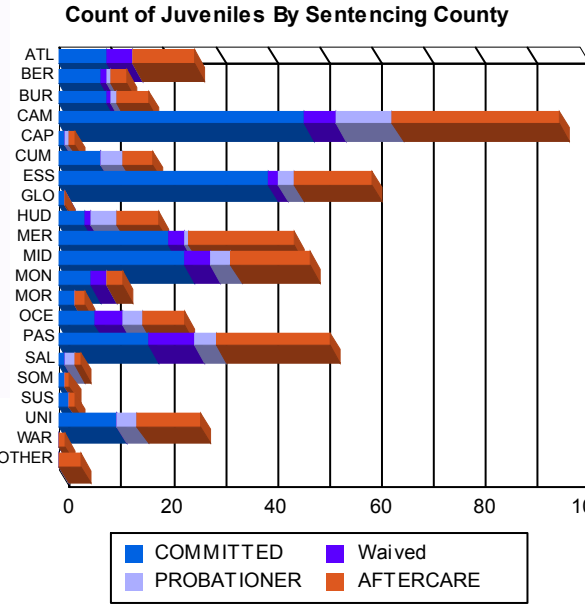
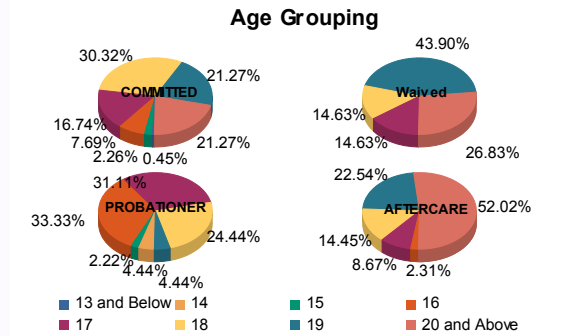
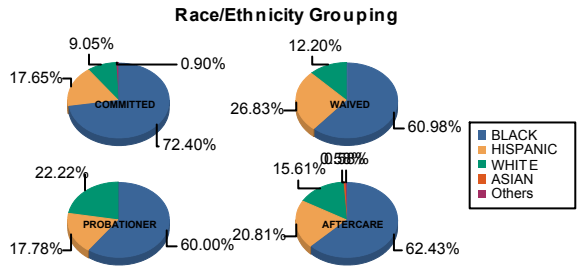
Race/ Ethnicity	COMMITTED		WAIVED		PROBATIONER		AFTERCARE		Total									
	MALE	FEMALE	MALE	FEMALE	MALE	FEMALE	MALE	FEMALE										
BLACK	156	72.56%	4	66.67%	24	60.00%	1	100.00%	26	61.90%	1	33.33%	104	64.60%	4	33.33%	320	66.67%
HISPANIC	37	17.21%	2	33.33%	11	27.50%	0	0.00%	7	16.67%	1	33.33%	34	21.12%	2	16.67%	94	19.58%
WHITE	20	9.30%	0	0.00%	5	12.50%	0	0.00%	9	21.43%	1	33.33%	21	13.04%	6	50.00%	62	12.92%
ASIAN	0	0.00%	0	0.00%	0	0.00%	0	0.00%	0	0.00%	0	0.00%	1	0.62%	0	0.00%	1	0.21%
Others	2	0.93%	0	0.00%	0	0.00%	0	0.00%	0	0.00%	0	0.00%	1	0.62%	0	0.00%	3	0.63%
<b>Total</b>	<b>215</b>	<b>100.00%</b>	<b>6</b>	<b>100.00%</b>	<b>40</b>	<b>100.00%</b>	<b>1</b>	<b>100.00%</b>	<b>42</b>	<b>100.00%</b>	<b>3</b>	<b>100.00%</b>	<b>161</b>	<b>100.00%</b>	<b>12</b>	<b>100.00%</b>	<b>480</b>	<b>100.00%</b>

**Age**

13 and Below	1	0.47%	0	0.00%	0	0.00%	0	0.00%	0	0.00%	0	0.00%	0	0.00%	0	0.00%	1	0.21%
14	0	0.00%	0	0.00%	0	0.00%	0	0.00%	2	4.76%	0	0.00%	0	0.00%	0	0.00%	2	0.42%
15	5	2.33%	0	0.00%	0	0.00%	0	0.00%	1	2.38%	0	0.00%	0	0.00%	0	0.00%	6	1.25%
16	17	7.91%	0	0.00%	0	0.00%	0	0.00%	14	33.33%	1	33.33%	3	1.86%	1	8.33%	36	7.50%
17	36	16.74%	1	16.67%	6	15.00%	0	0.00%	13	30.95%	1	33.33%	13	8.07%	2	16.67%	72	15.00%
18	65	30.23%	2	33.33%	6	15.00%	0	0.00%	11	26.19%	0	0.00%	24	14.91%	1	8.33%	109	22.71%
19	44	20.47%	3	50.00%	17	42.50%	1	100.00%	1	2.38%	1	33.33%	38	23.60%	1	8.33%	106	22.08%
20 and Above	47	21.86%	0	0.00%	11	27.50%	0	0.00%	0	0.00%	0	0.00%	83	51.55%	7	58.33%	148	30.83%
<b>Total</b>	<b>215</b>	<b>100.00%</b>	<b>6</b>	<b>100.00%</b>	<b>40</b>	<b>100.00%</b>	<b>1</b>	<b>100.00%</b>	<b>42</b>	<b>100.00%</b>	<b>3</b>	<b>100.00%</b>	<b>161</b>	<b>100.00%</b>	<b>12</b>	<b>100.00%</b>	<b>480</b>	<b>100.00%</b>
<b>Average Age</b>	<b>18.39</b>		<b>18.33</b>		<b>18.88</b>		<b>19.00</b>		<b>16.79</b>		<b>17.33</b>		<b>20.40</b>		<b>19.58</b>		<b>18.99</b>	

**Sentencing County**

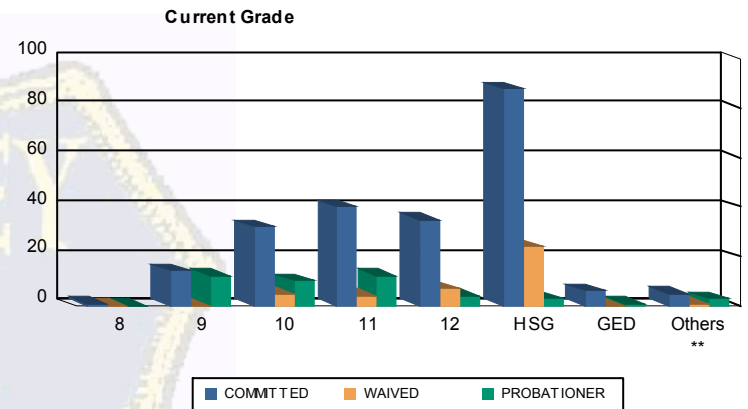
ATL	9	4.19%	0	0.00%	5	12.50%	0	0.00%	0	0.00%	0	0.00%	11	6.83%	1	8.33%	26	5.42%
BER	8	3.72%	0	0.00%	1	2.50%	0	0.00%	1	2.38%	0	0.00%	3	1.86%	0	0.00%	13	2.71%
BUR	7	3.26%	2	33.33%	1	2.50%	0	0.00%	1	2.38%	0	0.00%	5	3.11%	1	8.33%	17	3.54%
CAM	46	21.40%	1	16.67%	5	12.50%	1	100.00%	8	19.05%	3	100.00%	28	17.39%	4	33.33%	96	20.00%
CAP	1	0.47%	0	0.00%	0	0.00%	0	0.00%	1	2.38%	0	0.00%	1	0.62%	0	0.00%	3	0.63%
CUM	8	3.72%	0	0.00%	0	0.00%	0	0.00%	4	9.52%	0	0.00%	6	3.73%	0	0.00%	18	3.75%
ESS	40	18.60%	0	0.00%	2	5.00%	0	0.00%	3	7.14%	0	0.00%	14	8.70%	1	8.33%	60	12.50%
GLO	1	0.47%	0	0.00%	0	0.00%	0	0.00%	0	0.00%	0	0.00%	0	0.00%	0	0.00%	1	0.21%
HUD	5	2.33%	0	0.00%	1	2.50%	0	0.00%	5	11.90%	0	0.00%	8	4.97%	0	0.00%	19	3.96%
MER	19	8.84%	2	33.33%	3	7.50%	0	0.00%	1	2.38%	0	0.00%	19	11.80%	1	8.33%	45	9.38%
MID	23	10.70%	1	16.67%	5	12.50%	0	0.00%	4	9.52%	0	0.00%	14	8.70%	1	8.33%	48	10.00%
MON	6	2.79%	0	0.00%	3	7.50%	0	0.00%	0	0.00%	0	0.00%	3	1.86%	0	0.00%	12	2.50%
MOR	3	1.40%	0	0.00%	0	0.00%	0	0.00%	0	0.00%	0	0.00%	2	1.24%	0	0.00%	5	1.04%
OCE	7	3.26%	0	0.00%	5	12.50%	0	0.00%	4	9.52%	0	0.00%	8	4.97%	0	0.00%	24	5.00%
PAS	17	7.91%	0	0.00%	9	22.50%	0	0.00%	4	9.52%	0	0.00%	21	13.04%	1	8.33%	52	10.83%
SAL	1	0.47%	0	0.00%	0	0.00%	0	0.00%	2	4.76%	0	0.00%	1	0.62%	0	0.00%	4	0.83%
SOM	1	0.47%	0	0.00%	0	0.00%	0	0.00%	0	0.00%	0	0.00%	1	0.62%	0	0.00%	2	0.42%
SUS	2	0.93%	0	0.00%	0	0.00%	0	0.00%	0	0.00%	0	0.00%	0	0.00%	1	8.33%	3	0.63%
UNI	11	5.12%	0	0.00%	0	0.00%	0	0.00%	4	9.52%	0	0.00%	11	6.83%	1	8.33%	27	5.63%
WAR	0	0.00%	0	0.00%	0	0.00%	0	0.00%	0	0.00%	0	0.00%	1	0.62%	0	0.00%	1	0.21%
OTHER	0	0.00%	0	0.00%	0	0.00%	0	0.00%	0	0.00%	0	0.00%	4	2.48%	0	0.00%	4	0.83%
<b>Total</b>	<b>215</b>	<b>100.00%</b>	<b>6</b>	<b>100.00%</b>	<b>40</b>	<b>100.00%</b>	<b>1</b>	<b>100.00%</b>	<b>42</b>	<b>100.00%</b>	<b>3</b>	<b>100.00%</b>	<b>161</b>	<b>100.00%</b>	<b>12</b>	<b>100.00%</b>	<b>480</b>	<b>100.00%</b>





Juvenile Demographics and Statistics

Current Grade	COMMITTED		WAIVED		PROBATIONER		Total
	MALE	FEMALE	MALE	FEMALE	MALE	FEMALE	
8	1 (0.47%)	0 (0.00%)	0 (0.00%)	0 (0.00%)	0 (0.00%)	0 (0.00%)	1 (0.33%)
9	14 (6.51%)	0 (0.00%)	0 (0.00%)	0 (0.00%)	12 (28.57%)	0 (0.00%)	26 (8.47%)
10	31 (14.42%)	1 (16.67%)	5 (12.50%)	0 (0.00%)	10 (23.81%)	0 (0.00%)	47 (15.31%)
11	36 (16.74%)	4 (66.67%)	4 (10.00%)	0 (0.00%)	11 (26.19%)	1 (33.33%)	56 (18.24%)
12	34 (15.81%)	1 (16.67%)	7 (17.50%)	0 (0.00%)	4 (9.52%)	0 (0.00%)	46 (14.98%)
HSG	88 (40.93%)	0 (0.00%)	23 (57.50%)	1 (100.00%)	2 (4.76%)	1 (33.33%)	115 (37.46%)
GED	6 (2.79%)	0 (0.00%)	0 (0.00%)	0 (0.00%)	1 (2.38%)	0 (0.00%)	7 (2.28%)
Others **	5 (2.33%)	0 (0.00%)	1 (2.50%)	0 (0.00%)	2 (4.76%)	1 (33.33%)	9 (2.93%)
<b>Total</b>	<b>215 (100.00%)</b>	<b>6 (100.00%)</b>	<b>40 (100.00%)</b>	<b>1 (100.00%)</b>	<b>42 (100.00%)</b>	<b>3 (100.00%)</b>	<b>307 (100.00%)</b>

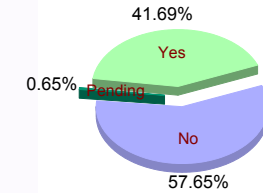


\*\* Includes Aged Out Juveniles and Pending Records

Special Education Services

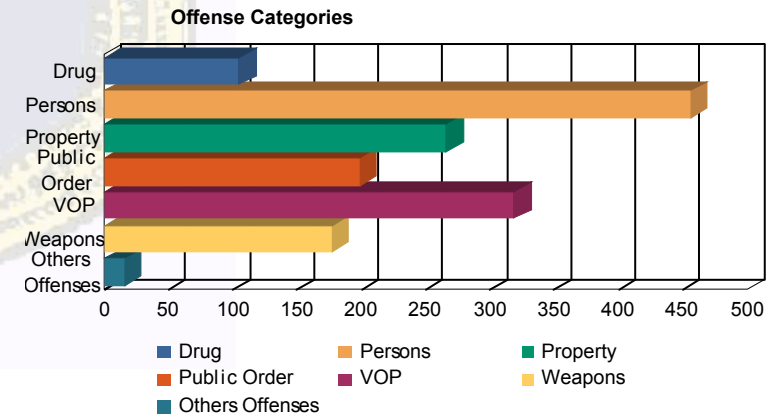
Yes	96 (44.65%)	3 (50.00%)	10 (25.00%)	1 (100.00%)	18 (42.86%)	0 (0.00%)	128 (41.69%)
No	119 (55.35%)	3 (50.00%)	30 (75.00%)	0 (0.00%)	22 (52.38%)	3 (100.00%)	177 (57.65%)
Pending	0 (0.00%)	0 (0.00%)	0 (0.00%)	0 (0.00%)	2 (4.76%)	0 (0.00%)	2 (0.65%)
<b>Total</b>	<b>215 (100.00%)</b>	<b>6 (100.00%)</b>	<b>40 (100.00%)</b>	<b>1 (100.00%)</b>	<b>42 (100.00%)</b>	<b>3 (100.00%)</b>	<b>307 (100.00%)</b>

Special Education



Offense Categories

Drug	78 (6.21%)	5 (10.20%)	5 (7.14%)	1 (8.33%)	16 (11.27%)	0 (0.00%)	105 (6.83%)
Persons	374 (29.78%)	15 (30.61%)	33 (47.14%)	4 (33.33%)	27 (19.01%)	3 (33.33%)	456 (29.65%)
Property	223 (17.75%)	7 (14.29%)	4 (5.71%)	2 (16.67%)	29 (20.42%)	1 (11.11%)	266 (17.30%)
Public Order	161 (12.82%)	8 (16.33%)	7 (10.00%)	2 (16.67%)	19 (13.38%)	2 (22.22%)	199 (12.94%)
VOP	264 (21.02%)	9 (18.37%)	3 (4.29%)	2 (16.67%)	38 (26.76%)	3 (33.33%)	319 (20.74%)
Weapons	142 (11.31%)	4 (8.16%)	18 (25.71%)	0 (0.00%)	13 (9.15%)	0 (0.00%)	177 (11.51%)
Others Offenses	14 (1.11%)	1 (2.04%)	0 (0.00%)	1 (8.33%)	0 (0.00%)	0 (0.00%)	16 (1.04%)
<b>Total *</b>	<b>1,256 (100.00%)</b>	<b>49 (100.00%)</b>	<b>70 (100.00%)</b>	<b>12 (100.00%)</b>	<b>142 (100.00%)</b>	<b>9 (100.00%)</b>	<b>1,538 (100.00%)</b>



\* Juveniles may have multiple offenses