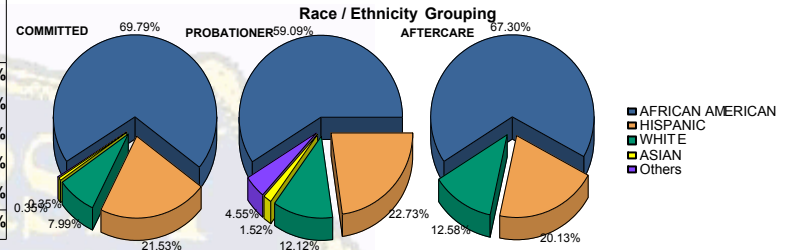


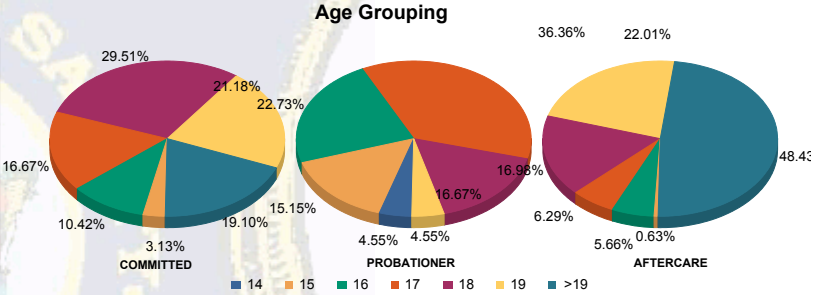


Juvenile Demographics and Statistics

Race/Ethnicity	COMMITTED		PROBATIONER		AFTERCARE		Total							
	MALE	FEMALE	MALE	FEMALE	MALE	FEMALE								
AFRICAN AMERICAN	194	70.55%	7	53.85%	36	61.02%	3	42.86%	103	68.21%	4	50.00%	347	67.64%
HISPANIC	61	22.18%	1	7.69%	14	23.73%	1	14.29%	30	19.87%	2	25.00%	109	21.25%
WHITE	18	6.55%	5	38.46%	5	8.47%	3	42.86%	18	11.92%	2	25.00%	51	9.94%
ASIAN	1	0.36%	0	0.00%	1	1.69%	0	0.00%	0	0.00%	0	0.00%	2	0.39%
Others	1	0.36%	0	0.00%	3	5.08%	0	0.00%	0	0.00%	0	0.00%	4	0.78%
<b>Total</b>	<b>275</b>	<b>100.00%</b>	<b>13</b>	<b>100.00%</b>	<b>59</b>	<b>100.00%</b>	<b>7</b>	<b>100.00%</b>	<b>151</b>	<b>100.00%</b>	<b>8</b>	<b>100.00%</b>	<b>513</b>	<b>100.00%</b>



Age	COMMITTED	PROBATIONER	AFTERCARE	Total
14	0	0	2	3
15	8	1	8	17
16	28	2	15	45
17	46	2	23	71
18	80	5	10	95
19	59	2	1	62
>19	54	1	0	55
<b>Total</b>	<b>275</b>	<b>13</b>	<b>59</b>	<b>513</b>

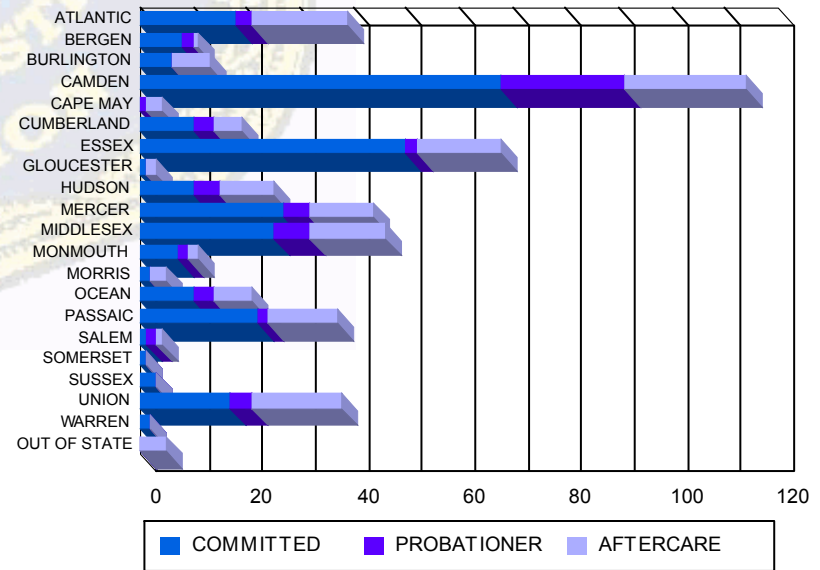


Average Age	COMMITTED	PROBATIONER	AFTERCARE	Total
Average Age	18.31	17.62	16.58	18.62

Sentencing County

Sentencing County	COMMITTED	PROBATIONER	AFTERCARE	Total
ATLANTIC	18	0	3	21
BERGEN	8	0	2	10
BURLINGTON	6	0	0	6
CAMDEN	61	7	19	87
CAPE MAY	0	0	1	1
CUMBERLAND	10	0	4	14
ESSEX	48	2	2	52
GLOUCESTER	1	0	0	1
HUDSON	10	0	5	15
MERCER	25	2	5	32
MIDDLESEX	25	0	6	31
MONMOUTH	7	0	2	9
MORRIS	2	0	0	2
OCEAN	10	0	3	13
PASSAIC	22	0	1	23
SALEM	1	0	2	3
SOMERSET	1	0	0	1
SUSSEX	2	1	0	3
UNION	16	1	4	21
WARREN	2	0	0	2
OUT OF STATE	0	0	0	0
<b>Total</b>	<b>275</b>	<b>13</b>	<b>59</b>	<b>513</b>

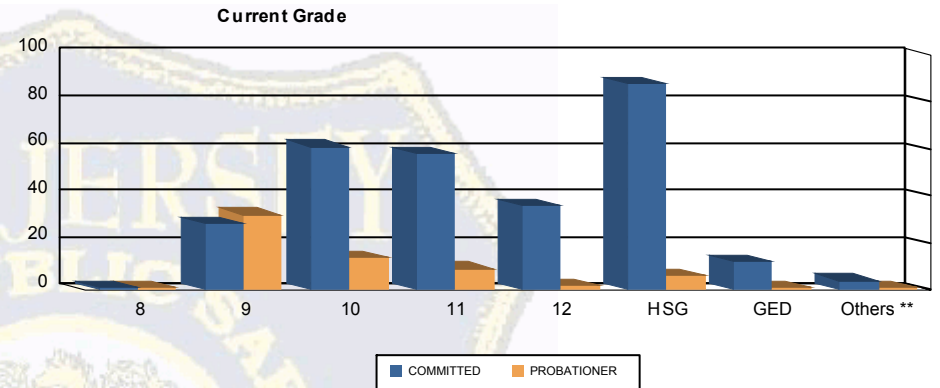
**Count of Juveniles By Sentencing County**





Juvenile Demographics and Statistics

Current Grade	COMMITTED		PROBATIONER		Total	
	MALE	FEMALE	MALE	FEMALE		
8	1 (0.36%)	0 0.00%	1 (1.69%)	0 0.00%	2 (0.56%)	
9	26 (9.45%)	2 (15.38%)	29 (49.15%)	3 (42.86%)	60 (16.95%)	
10	57 (20.73%)	4 (30.77%)	14 (23.73%)	0 0.00%	75 (21.19%)	
11	55 (20.00%)	3 (23.08%)	9 (15.25%)	0 0.00%	67 (18.93%)	
12	36 (13.09%)	0 0.00%	2 (3.39%)	0 0.00%	38 (10.73%)	
HSG	84 (30.55%)	4 (30.77%)	3 (5.08%)	3 (42.86%)	94 (26.55%)	
GED	12 (4.36%)	0 0.00%	0 0.00%	1 (14.29%)	13 (3.67%)	
Others **	4 (1.45%)	0 0.00%	1 (1.69%)	0 0.00%	5 (1.41%)	
<b>Total</b>	<b>275 (100.00%)</b>	<b>13 (100.00%)</b>	<b>59 (100.00%)</b>	<b>7 (100.00%)</b>	<b>354 (100.00%)</b>	

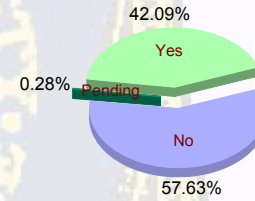


\*\* Includes Aged Out Juveniles and Pending Records

Special Education Services

Yes	115 (41.82%)	6 (46.15%)	27 (45.76%)	1 (14.29%)	149 (42.09%)
No	159 (57.82%)	7 (53.85%)	32 (54.24%)	6 (85.71%)	204 (57.63%)
Pending	1 (0.36%)	0 0.00%	0 0.00%	0 0.00%	1 (0.28%)
<b>Total</b>	<b>275 (100.00%)</b>	<b>13 (100.00%)</b>	<b>59 (100.00%)</b>	<b>7 (100.00%)</b>	<b>354 (100.00%)</b>

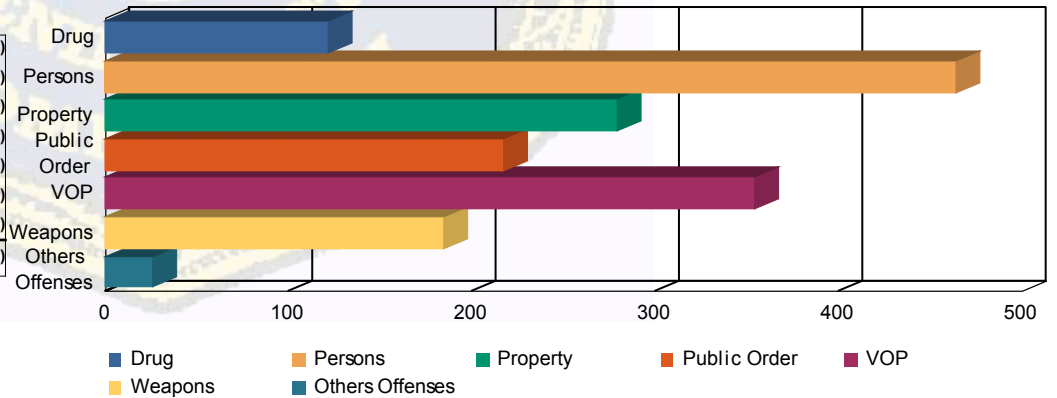
Special Education



Offense Categories

Drug	96 (6.95%)	4 (6.15%)	17 (9.77%)	4 (16.00%)	121 (7.36%)
Persons	407 (29.47%)	13 (20.00%)	40 (22.99%)	4 (16.00%)	464 (28.21%)
Property	243 (17.60%)	10 (15.38%)	24 (13.79%)	2 (8.00%)	279 (16.96%)
Public Order	175 (12.67%)	13 (20.00%)	24 (13.79%)	5 (20.00%)	217 (13.19%)
VOP	286 (20.71%)	15 (23.08%)	45 (25.86%)	8 (32.00%)	354 (21.52%)
Weapons	154 (11.15%)	9 (13.85%)	19 (10.92%)	2 (8.00%)	184 (11.19%)
Others Offenses	20 (1.45%)	1 (1.54%)	5 (2.87%)	0 0.00%	26 (1.58%)
<b>Total *</b>	<b>1,381 (100.00%)</b>	<b>65 (100.00%)</b>	<b>174 (100.00%)</b>	<b>25 (100.00%)</b>	<b>1,645 (100.00%)</b>

Offense Categories



\* Juveniles may have multiple offenses