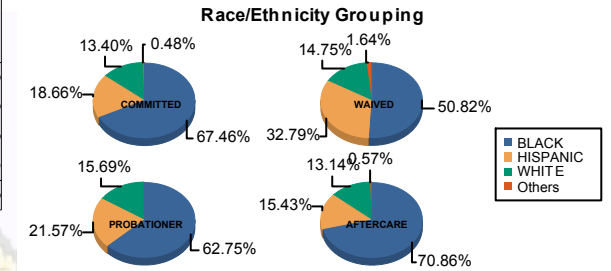




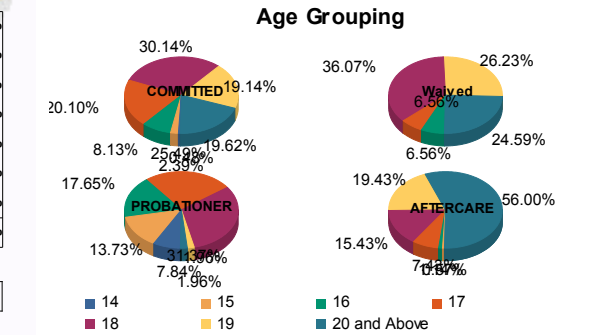
Juvenile Demographics and Statistics

Race/ Ethnicity	COMMITTED		WAIVED		PROBATIONER		AFTERCARE		Total									
	MALE	FEMALE	MALE	FEMALE	MALE	FEMALE	MALE	FEMALE										
BLACK	133	68.91%	8	50.00%	29	49.15%	2	100.00%	31	63.27%	1	50.00%	121	71.60%	3	50.00%	328	66.13%
HISPANIC	38	19.69%	1	6.25%	20	33.90%	0	0.00%	11	22.45%	0	0.00%	26	15.38%	1	16.67%	97	19.56%
WHITE	21	10.88%	7	43.75%	9	15.25%	0	0.00%	7	14.29%	1	50.00%	21	12.43%	2	33.33%	68	13.71%
Others	1	0.52%	0	0.00%	1	1.69%	0	0.00%	0	0.00%	0	0.00%	1	0.59%	0	0.00%	3	0.60%
Total	193	100.00%	16	100.00%	59	100.00%	2	100.00%	49	100.00%	2	100.00%	169	100.00%	6	100.00%	496	100.00%



Age

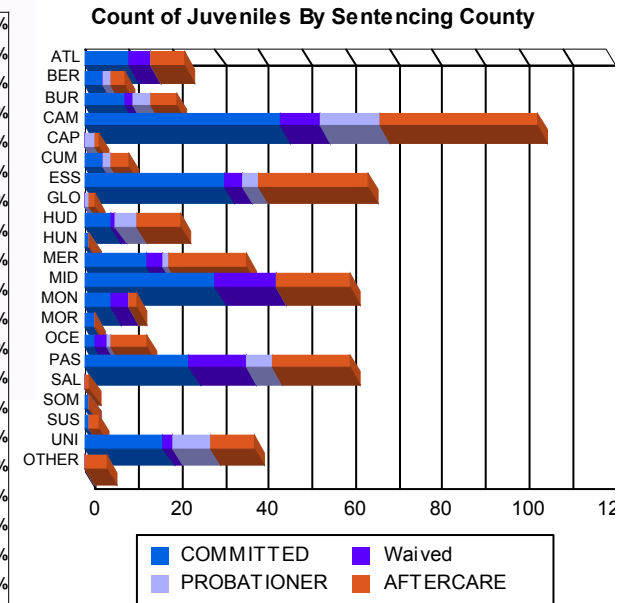
14	1	0.52%	0	0.00%	0	0.00%	0	0.00%	4	8.16%	0	0.00%	0	0.00%	0	0.00%	5	1.01%
15	5	2.59%	0	0.00%	0	0.00%	0	0.00%	7	14.29%	0	0.00%	1	0.59%	0	0.00%	13	2.62%
16	15	7.77%	2	12.50%	4	6.78%	0	0.00%	9	18.37%	0	0.00%	2	1.18%	0	0.00%	32	6.45%
17	37	19.17%	5	31.25%	4	6.78%	0	0.00%	13	26.53%	0	0.00%	13	7.69%	0	0.00%	72	14.52%
18	61	31.61%	2	12.50%	22	37.29%	0	0.00%	15	30.61%	1	50.00%	27	15.98%	0	0.00%	128	25.81%
19	39	20.21%	1	6.25%	15	25.42%	1	50.00%	1	2.04%	0	0.00%	33	19.53%	1	16.67%	91	18.35%
20 and Above	35	18.13%	6	37.50%	14	23.73%	1	50.00%	0	0.00%	1	50.00%	93	55.03%	5	83.33%	155	31.25%
Total	193	100.00%	16	100.00%	59	100.00%	2	100.00%	49	100.00%	2	100.00%	169	100.00%	6	100.00%	496	100.00%



Average Age	18.31	18.50	18.63	19.50	16.63	19.00	20.34	21.67	18.93
-------------	-------	-------	-------	-------	-------	-------	-------	-------	-------

Sentencing County

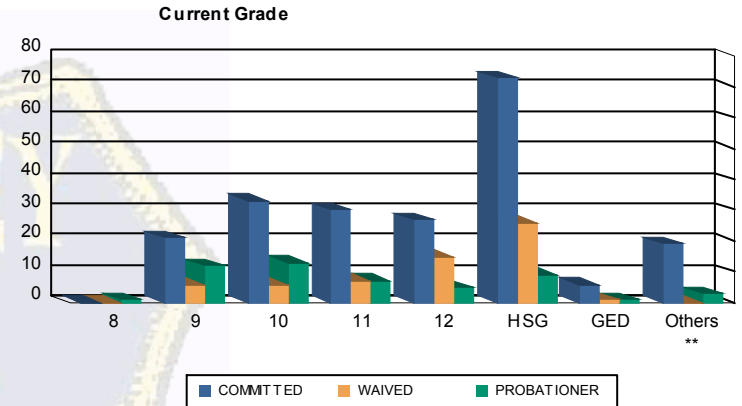
ATL	10	5.18%	0	0.00%	5	8.47%	0	0.00%	0	0.00%	0	0.00%	7	4.14%	1	16.67%	23	4.64%
BER	4	2.07%	0	0.00%	0	0.00%	0	0.00%	2	4.08%	0	0.00%	3	1.78%	0	0.00%	9	1.81%
BUR	8	4.15%	1	6.25%	2	3.39%	0	0.00%	4	8.16%	0	0.00%	5	2.96%	1	16.67%	21	4.23%
CAM	41	21.24%	4	25.00%	7	11.86%	2	100.00%	13	26.53%	1	50.00%	36	21.30%	0	0.00%	104	20.97%
CAP	0	0.00%	0	0.00%	0	0.00%	0	0.00%	2	4.08%	0	0.00%	1	0.59%	0	0.00%	3	0.60%
CUM	3	1.55%	1	6.25%	0	0.00%	0	0.00%	2	4.08%	0	0.00%	4	2.37%	0	0.00%	10	2.02%
ESS	32	16.58%	0	0.00%	4	6.78%	0	0.00%	4	8.16%	0	0.00%	24	14.20%	1	16.67%	65	13.10%
GLO	0	0.00%	0	0.00%	0	0.00%	0	0.00%	1	2.04%	0	0.00%	1	0.59%	0	0.00%	2	0.40%
HUD	6	3.11%	0	0.00%	1	1.69%	0	0.00%	5	10.20%	0	0.00%	10	5.92%	0	0.00%	22	4.44%
HUN	1	0.52%	0	0.00%	0	0.00%	0	0.00%	0	0.00%	0	0.00%	0	0.00%	0	0.00%	1	0.20%
MER	12	6.22%	2	12.50%	4	6.78%	0	0.00%	1	2.04%	0	0.00%	18	10.65%	0	0.00%	37	7.46%
MID	26	13.47%	4	25.00%	14	23.73%	0	0.00%	0	0.00%	0	0.00%	17	10.06%	0	0.00%	61	12.30%
MON	6	3.11%	0	0.00%	4	6.78%	0	0.00%	0	0.00%	0	0.00%	2	1.18%	0	0.00%	12	2.42%
MOR	2	1.04%	0	0.00%	0	0.00%	0	0.00%	0	0.00%	0	0.00%	0	0.00%	0	0.00%	2	0.40%
OCE	2	1.04%	0	0.00%	3	5.08%	0	0.00%	1	2.04%	0	0.00%	8	4.73%	0	0.00%	14	2.82%
PAS	22	11.40%	2	12.50%	13	22.03%	0	0.00%	5	10.20%	1	50.00%	17	10.06%	1	16.67%	61	12.30%
SAL	0	0.00%	0	0.00%	0	0.00%	0	0.00%	0	0.00%	0	0.00%	1	0.59%	0	0.00%	1	0.20%
SOM	1	0.52%	0	0.00%	0	0.00%	0	0.00%	0	0.00%	0	0.00%	0	0.00%	0	0.00%	1	0.20%
SUS	1	0.52%	0	0.00%	0	0.00%	0	0.00%	0	0.00%	0	0.00%	1	0.59%	1	16.67%	3	0.60%
UNI	16	8.29%	2	12.50%	2	3.39%	0	0.00%	9	18.37%	0	0.00%	9	5.33%	1	16.67%	39	7.86%
OTHER	0	0.00%	0	0.00%	0	0.00%	0	0.00%	0	0.00%	0	0.00%	5	2.96%	0	0.00%	5	1.01%
Total	193	100.00%	16	100.00%	59	100.00%	2	100.00%	49	100.00%	2	100.00%	169	100.00%	6	100.00%	496	100.00%





Juvenile Demographics and Statistics

Current Grade	COMMITTED		WAIVED		PROBATIONER		Total
	MALE	FEMALE	MALE	FEMALE	MALE	FEMALE	
8	0 (0.00%)	0 (0.00%)	0 (0.00%)	0 (0.00%)	1 (2.04%)	0 (0.00%)	1 (0.31%)
9	18 (9.33%)	3 (18.75%)	6 (10.17%)	0 (0.00%)	12 (24.49%)	0 (0.00%)	39 (12.15%)
10	28 (14.51%)	5 (31.25%)	6 (10.17%)	0 (0.00%)	13 (26.53%)	0 (0.00%)	52 (16.20%)
11	28 (14.51%)	2 (12.50%)	7 (11.86%)	0 (0.00%)	7 (14.29%)	0 (0.00%)	44 (13.71%)
12	26 (13.47%)	1 (6.25%)	15 (25.42%)	0 (0.00%)	5 (10.20%)	0 (0.00%)	47 (14.64%)
HSG	70 (36.27%)	3 (18.75%)	24 (40.68%)	2 (100.00%)	7 (14.29%)	2 (100.00%)	108 (33.64%)
GED	6 (3.11%)	0 (0.00%)	1 (1.69%)	0 (0.00%)	1 (2.04%)	0 (0.00%)	8 (2.49%)
Others **	17 (8.81%)	2 (12.50%)	0 (0.00%)	0 (0.00%)	3 (6.12%)	0 (0.00%)	22 (6.85%)
Total	193 (100.00%)	16 (100.00%)	59 (100.00%)	2 (100.00%)	49 (100.00%)	2 (100.00%)	321 (100.00%)

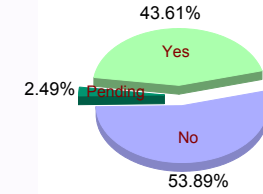


** Includes Aged Out Juveniles and Pending Records

Special Education Services

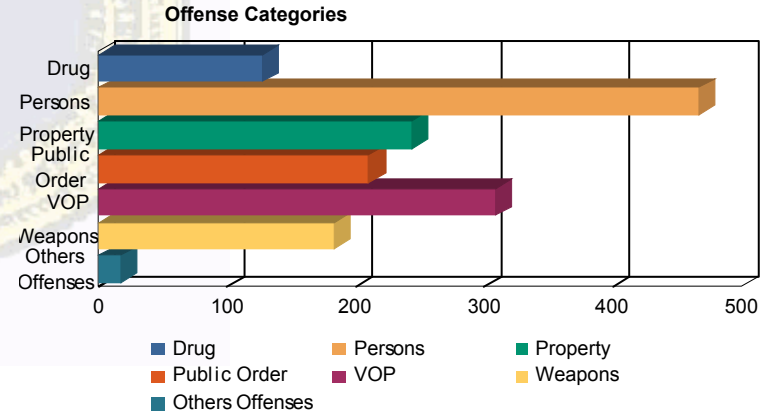
Yes	82 (42.49%)	4 (25.00%)	27 (45.76%)	2 (100.00%)	24 (48.98%)	1 (50.00%)	140 (43.61%)
No	105 (54.40%)	12 (75.00%)	32 (54.24%)	0 (0.00%)	23 (46.94%)	1 (50.00%)	173 (53.89%)
Pending	6 (3.11%)	0 (0.00%)	0 (0.00%)	0 (0.00%)	2 (4.08%)	0 (0.00%)	8 (2.49%)
Total	193 (100.00%)	16 (100.00%)	59 (100.00%)	2 (100.00%)	49 (100.00%)	2 (100.00%)	321 (100.00%)

Special Education



Offense Categories

Drug	104 (8.32%)	7 (9.86%)	5 (4.76%)	1 (8.33%)	10 (8.62%)	0 (0.00%)	127 (8.16%)
Persons	358 (28.64%)	16 (22.54%)	58 (55.24%)	4 (33.33%)	30 (25.86%)	1 (33.33%)	467 (29.99%)
Property	206 (16.48%)	12 (16.90%)	6 (5.71%)	2 (16.67%)	18 (15.52%)	0 (0.00%)	244 (15.67%)
Public Order	171 (13.68%)	13 (18.31%)	10 (9.52%)	2 (16.67%)	14 (12.07%)	0 (0.00%)	210 (13.49%)
VOP	253 (20.24%)	16 (22.54%)	7 (6.67%)	2 (16.67%)	29 (25.00%)	2 (66.67%)	309 (19.85%)
Weapons	145 (11.60%)	6 (8.45%)	18 (17.14%)	0 (0.00%)	14 (12.07%)	0 (0.00%)	183 (11.75%)
Others Offenses	13 (1.04%)	1 (1.41%)	1 (0.95%)	1 (8.33%)	1 (0.86%)	0 (0.00%)	17 (1.09%)
Total *	1,250 (100.00%)	71 (100.00%)	105 (100.00%)	12 (100.00%)	116 (100.00%)	3 (100.00%)	1,557 (100.00%)



* Juveniles may have multiple offenses