



Juvenile Demographics and Statistics

Race/ Ethnicity	COMMITTED				WAIVED				PROBATIONER				AFTERCARE				Total	
	MALE	FEMALE	MALE	FEMALE	MALE	FEMALE	MALE	FEMALE	MALE	FEMALE	MALE	FEMALE	MALE	FEMALE				
BLACK	134	68.72%	8	50.00%	30	50.85%	2	100.00%	32	66.67%	1	50.00%	116	71.60%	3	50.00%	326	66.53%
HISPANIC	40	20.51%	1	6.25%	19	32.20%	0	0.00%	11	22.92%	0	0.00%	25	15.43%	1	16.67%	97	19.80%
WHITE	20	10.26%	7	43.75%	9	15.25%	0	0.00%	5	10.42%	1	50.00%	20	12.35%	2	33.33%	64	13.06%
Others	1	0.51%	0	0.00%	1	1.69%	0	0.00%	0	0.00%	0	0.00%	1	0.62%	0	0.00%	3	0.61%
Total	195	100.00%	16	100.00%	59	100.00%	2	100.00%	48	100.00%	2	100.00%	162	100.00%	6	100.00%	490	100.00%

Age

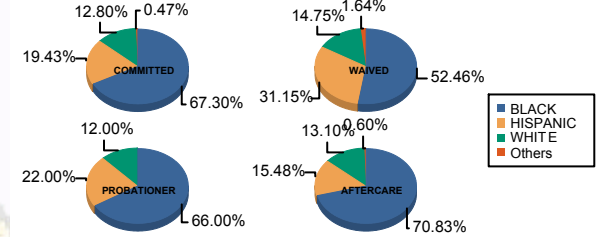
14	1	0.51%	0	0.00%	0	0.00%	0	0.00%	5	10.42%	0	0.00%	0	0.00%	0	0.00%	6	1.22%
15	6	3.08%	0	0.00%	0	0.00%	0	0.00%	7	14.58%	0	0.00%	1	0.62%	0	0.00%	14	2.86%
16	15	7.69%	2	12.50%	4	6.78%	0	0.00%	8	16.67%	0	0.00%	3	1.85%	0	0.00%	32	6.53%
17	37	18.97%	5	31.25%	4	6.78%	0	0.00%	13	27.08%	0	0.00%	12	7.41%	0	0.00%	71	14.49%
18	62	31.79%	2	12.50%	22	37.29%	0	0.00%	15	31.25%	1	50.00%	25	15.43%	0	0.00%	127	25.92%
19	39	20.00%	1	6.25%	15	25.42%	1	50.00%	0	0.00%	0	0.00%	32	19.75%	1	16.67%	89	18.16%
20 and Above	35	17.95%	6	37.50%	14	23.73%	1	50.00%	0	0.00%	1	50.00%	89	54.94%	5	83.33%	151	30.82%
Total	195	100.00%	16	100.00%	59	100.00%	2	100.00%	48	100.00%	2	100.00%	162	100.00%	6	100.00%	490	100.00%

Average Age	18.28	18.50	18.63	19.50	16.54	19.00	20.26	21.83	18.87
-------------	-------	-------	-------	-------	-------	-------	-------	-------	-------

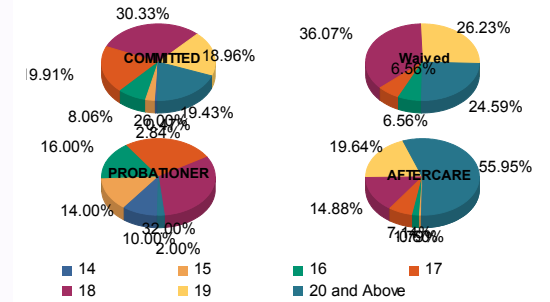
Sentencing County

ATL	10	5.13%	0	0.00%	5	8.47%	0	0.00%	0	0.00%	0	0.00%	7	4.32%	1	16.67%	23	4.69%
BER	4	2.05%	0	0.00%	0	0.00%	0	0.00%	2	4.17%	0	0.00%	3	1.85%	0	0.00%	9	1.84%
BUR	8	4.10%	1	6.25%	2	3.39%	0	0.00%	3	6.25%	0	0.00%	5	3.09%	1	16.67%	20	4.08%
CAM	41	21.03%	4	25.00%	7	11.86%	2	100.00%	13	27.08%	1	50.00%	34	20.99%	0	0.00%	102	20.82%
CAP	0	0.00%	0	0.00%	0	0.00%	0	0.00%	1	2.08%	0	0.00%	1	0.62%	0	0.00%	2	0.41%
CUM	3	1.54%	1	6.25%	0	0.00%	0	0.00%	2	4.17%	0	0.00%	4	2.47%	0	0.00%	10	2.04%
ESS	31	15.90%	0	0.00%	4	6.78%	0	0.00%	4	8.33%	0	0.00%	24	14.81%	1	16.67%	64	13.06%
GLO	0	0.00%	0	0.00%	0	0.00%	0	0.00%	1	2.08%	0	0.00%	1	0.62%	0	0.00%	2	0.41%
HUD	6	3.08%	0	0.00%	1	1.69%	0	0.00%	6	12.50%	0	0.00%	9	5.56%	0	0.00%	22	4.49%
HUN	1	0.51%	0	0.00%	0	0.00%	0	0.00%	0	0.00%	0	0.00%	0	0.00%	0	0.00%	1	0.20%
MER	11	5.64%	2	12.50%	4	6.78%	0	0.00%	1	2.08%	0	0.00%	16	9.88%	0	0.00%	34	6.94%
MID	28	14.36%	4	25.00%	13	22.03%	0	0.00%	0	0.00%	0	0.00%	17	10.49%	0	0.00%	62	12.65%
MON	6	3.08%	0	0.00%	4	6.78%	0	0.00%	0	0.00%	0	0.00%	2	1.23%	0	0.00%	12	2.45%
MOR	2	1.03%	0	0.00%	0	0.00%	0	0.00%	0	0.00%	0	0.00%	1	0.62%	0	0.00%	3	0.61%
OCE	2	1.03%	0	0.00%	3	5.08%	0	0.00%	1	2.08%	0	0.00%	7	4.32%	0	0.00%	13	2.65%
PAS	24	12.31%	2	12.50%	14	23.73%	0	0.00%	5	10.42%	1	50.00%	15	9.26%	1	16.67%	62	12.65%
SAL	0	0.00%	0	0.00%	0	0.00%	0	0.00%	0	0.00%	0	0.00%	1	0.62%	0	0.00%	1	0.20%
SOM	1	0.51%	0	0.00%	0	0.00%	0	0.00%	0	0.00%	0	0.00%	0	0.00%	0	0.00%	1	0.20%
SUS	1	0.51%	0	0.00%	0	0.00%	0	0.00%	0	0.00%	0	0.00%	1	0.62%	1	16.67%	3	0.61%
UNI	16	8.21%	2	12.50%	2	3.39%	0	0.00%	9	18.75%	0	0.00%	9	5.56%	1	16.67%	39	7.96%
OTHER	0	0.00%	0	0.00%	0	0.00%	0	0.00%	0	0.00%	0	0.00%	5	3.09%	0	0.00%	5	1.02%
Total	195	100.00%	16	100.00%	59	100.00%	2	100.00%	48	100.00%	2	100.00%	162	100.00%	6	100.00%	490	100.00%

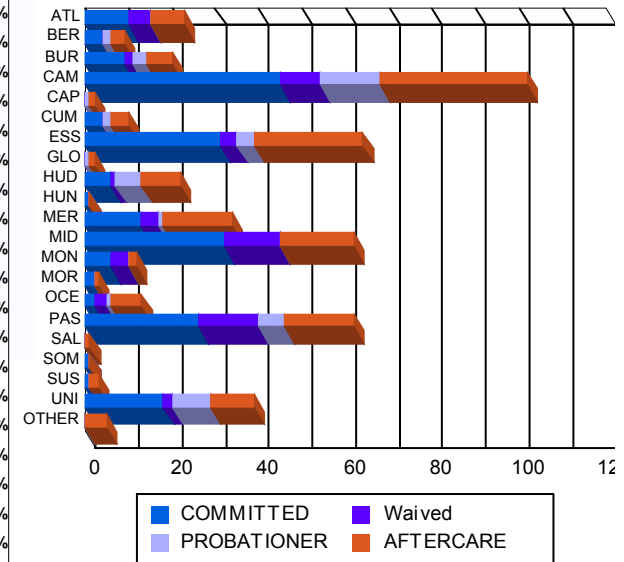
Race/Ethnicity Grouping



Age Grouping



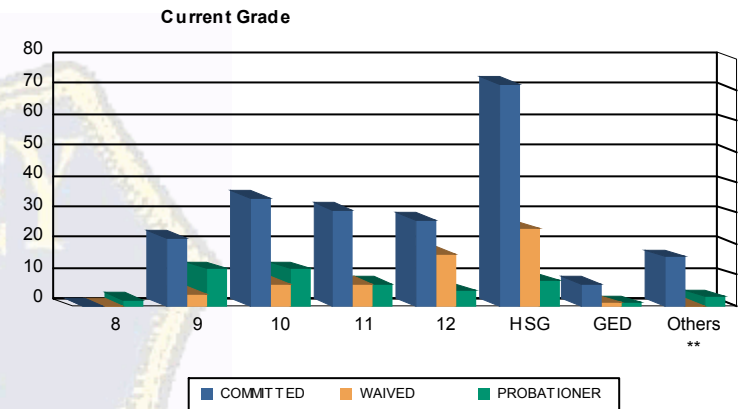
Count of Juveniles By Sentencing County





Juvenile Demographics and Statistics

Current Grade	COMMITTED		WAIVED		PROBATIONER		Total
	MALE	FEMALE	MALE	FEMALE	MALE	FEMALE	
8	0 (0.00%)	0 (0.00%)	0 (0.00%)	0 (0.00%)	2 (4.17%)	0 (0.00%)	2 (0.62%)
9	19 (9.74%)	3 (18.75%)	4 (6.78%)	0 (0.00%)	12 (25.00%)	0 (0.00%)	38 (11.80%)
10	30 (15.38%)	5 (31.25%)	7 (11.86%)	0 (0.00%)	12 (25.00%)	0 (0.00%)	54 (16.77%)
11	29 (14.87%)	2 (12.50%)	7 (11.86%)	0 (0.00%)	7 (14.58%)	0 (0.00%)	45 (13.98%)
12	27 (13.85%)	1 (6.25%)	17 (28.81%)	0 (0.00%)	5 (10.42%)	0 (0.00%)	50 (15.53%)
HSG	69 (35.38%)	3 (18.75%)	23 (38.98%)	2 (100.00%)	6 (12.50%)	2 (100.00%)	105 (32.61%)
GED	7 (3.59%)	0 (0.00%)	1 (1.69%)	0 (0.00%)	1 (2.08%)	0 (0.00%)	9 (2.80%)
Others **	14 (7.18%)	2 (12.50%)	0 (0.00%)	0 (0.00%)	3 (6.25%)	0 (0.00%)	19 (5.90%)
Total	195 (100.00%)	16 (100.00%)	59 (100.00%)	2 (100.00%)	48 (100.00%)	2 (100.00%)	322 (100.00%)

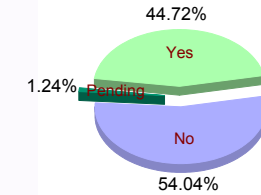


** Includes Aged Out Juveniles and Pending Records

Special Education Services

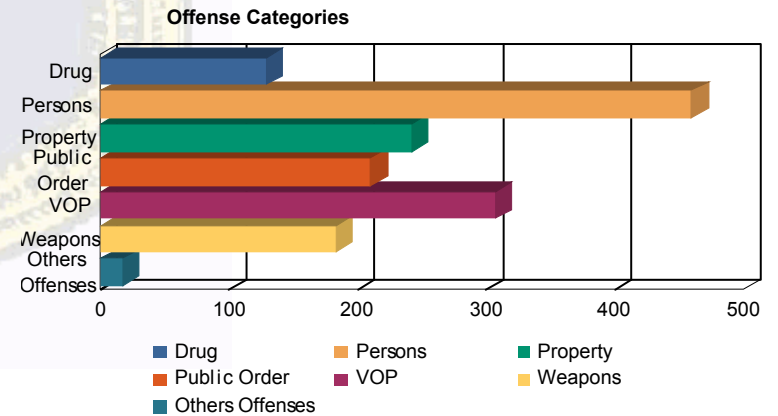
	Yes	No	Pending	Total
Yes	85 (43.59%)	4 (25.00%)	28 (47.46%)	2 (100.00%)
No	108 (55.38%)	12 (75.00%)	31 (52.54%)	0 (0.00%)
Pending	2 (1.03%)	0 (0.00%)	0 (0.00%)	0 (0.00%)
Total	195 (100.00%)	16 (100.00%)	59 (100.00%)	2 (100.00%)

Special Education



Offense Categories

	Drug	Persons	Property	Public Order	VOP	Weapons	Others	Total
Drug	106 (8.51%)	7 (9.86%)	5 (4.72%)	1 (8.33%)	10 (9.09%)	0 (0.00%)	129 (8.33%)	
Persons	354 (28.41%)	16 (22.54%)	57 (53.77%)	4 (33.33%)	28 (25.45%)	1 (33.33%)	460 (29.72%)	
Property	204 (16.37%)	12 (16.90%)	7 (6.60%)	2 (16.67%)	17 (15.45%)	0 (0.00%)	242 (15.63%)	
Public Order	172 (13.80%)	13 (18.31%)	10 (9.43%)	2 (16.67%)	13 (11.82%)	0 (0.00%)	210 (13.57%)	
VOP	252 (20.22%)	16 (22.54%)	8 (7.55%)	2 (16.67%)	27 (24.55%)	2 (66.67%)	307 (19.83%)	
Weapons	145 (11.64%)	6 (8.45%)	18 (16.98%)	0 (0.00%)	14 (12.73%)	0 (0.00%)	183 (11.82%)	
Others Offenses	13 (1.04%)	1 (1.41%)	1 (0.94%)	1 (8.33%)	1 (0.91%)	0 (0.00%)	17 (1.10%)	
Total *	1,246 (100.00%)	71 (100.00%)	106 (100.00%)	12 (100.00%)	110 (100.00%)	3 (100.00%)	1,548 (100.00%)	



* Juveniles may have multiple offenses