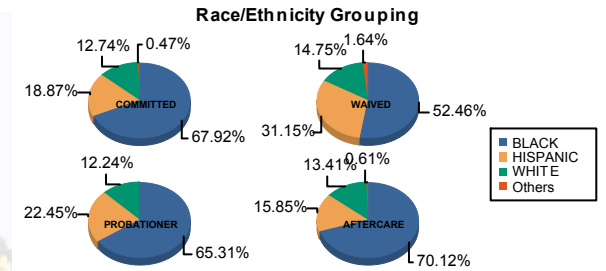




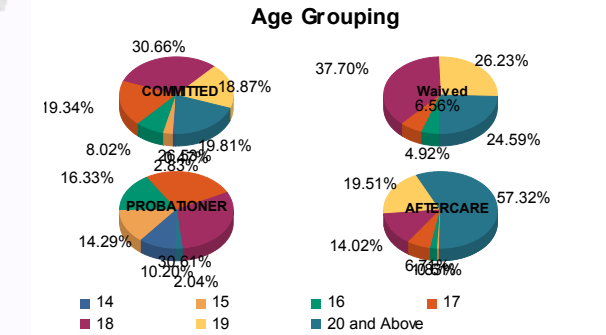
Juvenile Demographics and Statistics

Race/ Ethnicity	COMMITTED		WAIVED		PROBATIONER		AFTERCARE		Total									
	MALE	FEMALE	MALE	FEMALE	MALE	FEMALE	MALE	FEMALE										
BLACK	136	69.39%	8	50.00%	31	51.67%	1	100.00%	31	65.96%	1	50.00%	112	70.89%	3	50.00%	323	66.46%
HISPANIC	39	19.90%	1	6.25%	19	31.67%	0	0.00%	11	23.40%	0	0.00%	25	15.82%	1	16.67%	96	19.75%
WHITE	20	10.20%	7	43.75%	9	15.00%	0	0.00%	5	10.64%	1	50.00%	20	12.66%	2	33.33%	64	13.17%
Others	1	0.51%	0	0.00%	1	1.67%	0	0.00%	0	0.00%	0	0.00%	1	0.63%	0	0.00%	3	0.62%
<b>Total</b>	<b>196</b>	<b>100.00%</b>	<b>16</b>	<b>100.00%</b>	<b>60</b>	<b>100.00%</b>	<b>1</b>	<b>100.00%</b>	<b>47</b>	<b>100.00%</b>	<b>2</b>	<b>100.00%</b>	<b>158</b>	<b>100.00%</b>	<b>6</b>	<b>100.00%</b>	<b>486</b>	<b>100.00%</b>



**Age**

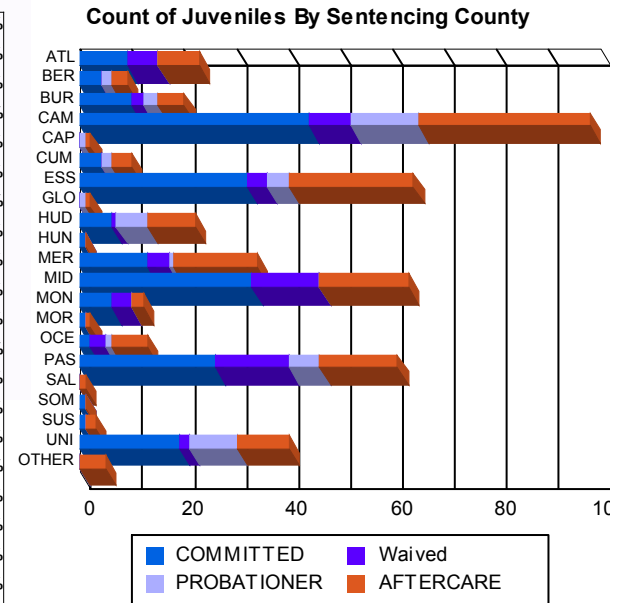
14	1	0.51%	0	0.00%	0	0.00%	0	0.00%	5	10.64%	0	0.00%	0	0.00%	0	0.00%	6	1.23%
15	6	3.06%	0	0.00%	0	0.00%	0	0.00%	7	14.89%	0	0.00%	1	0.63%	0	0.00%	14	2.88%
16	15	7.65%	2	12.50%	3	5.00%	0	0.00%	8	17.02%	0	0.00%	3	1.90%	0	0.00%	31	6.38%
17	36	18.37%	5	31.25%	4	6.67%	0	0.00%	13	27.66%	0	0.00%	11	6.96%	0	0.00%	69	14.20%
18	63	32.14%	2	12.50%	23	38.33%	0	0.00%	14	29.79%	1	50.00%	23	14.56%	0	0.00%	126	25.93%
19	39	19.90%	1	6.25%	15	25.00%	1	100.00%	0	0.00%	0	0.00%	31	19.62%	1	16.67%	88	18.11%
20 and Above	36	18.37%	6	37.50%	15	25.00%	0	0.00%	0	0.00%	1	50.00%	89	56.33%	5	83.33%	152	31.28%
<b>Total</b>	<b>196</b>	<b>100.00%</b>	<b>16</b>	<b>100.00%</b>	<b>60</b>	<b>100.00%</b>	<b>1</b>	<b>100.00%</b>	<b>47</b>	<b>100.00%</b>	<b>2</b>	<b>100.00%</b>	<b>158</b>	<b>100.00%</b>	<b>6</b>	<b>100.00%</b>	<b>486</b>	<b>100.00%</b>



Average Age	18.31	18.50	18.68	19.00	16.51	19.00	20.30	21.83	18.88
-------------	-------	-------	-------	-------	-------	-------	-------	-------	-------

**Sentencing County**

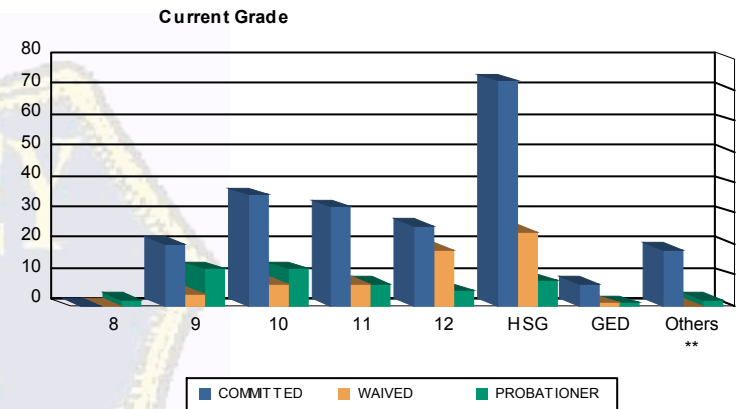
ATL	9	4.59%	0	0.00%	6	10.00%	0	0.00%	0	0.00%	0	0.00%	7	4.43%	1	16.67%	23	4.73%
BER	4	2.04%	0	0.00%	0	0.00%	0	0.00%	2	4.26%	0	0.00%	3	1.90%	0	0.00%	9	1.85%
BUR	9	4.59%	1	6.25%	2	3.33%	0	0.00%	3	6.38%	0	0.00%	4	2.53%	1	16.67%	20	4.12%
CAM	40	20.41%	4	25.00%	7	11.67%	1	100.00%	12	25.53%	1	50.00%	33	20.89%	0	0.00%	98	20.16%
CAP	0	0.00%	0	0.00%	0	0.00%	0	0.00%	1	2.13%	0	0.00%	1	0.63%	0	0.00%	2	0.41%
CUM	3	1.53%	1	6.25%	0	0.00%	0	0.00%	2	4.26%	0	0.00%	4	2.53%	0	0.00%	10	2.06%
ESS	32	16.33%	0	0.00%	4	6.67%	0	0.00%	4	8.51%	0	0.00%	23	14.56%	1	16.67%	64	13.17%
GLO	0	0.00%	0	0.00%	0	0.00%	0	0.00%	1	2.13%	0	0.00%	1	0.63%	0	0.00%	2	0.41%
HUD	6	3.06%	0	0.00%	1	1.67%	0	0.00%	6	12.77%	0	0.00%	9	5.70%	0	0.00%	22	4.53%
HUN	1	0.51%	0	0.00%	0	0.00%	0	0.00%	0	0.00%	0	0.00%	0	0.00%	0	0.00%	1	0.21%
MER	11	5.61%	2	12.50%	4	6.67%	0	0.00%	1	2.13%	0	0.00%	16	10.13%	0	0.00%	34	7.00%
MID	29	14.80%	4	25.00%	13	21.67%	0	0.00%	0	0.00%	0	0.00%	17	10.76%	0	0.00%	63	12.96%
MON	6	3.06%	0	0.00%	4	6.67%	0	0.00%	0	0.00%	0	0.00%	2	1.27%	0	0.00%	12	2.47%
MOR	1	0.51%	0	0.00%	0	0.00%	0	0.00%	0	0.00%	0	0.00%	1	0.63%	0	0.00%	2	0.41%
OCE	2	1.02%	0	0.00%	3	5.00%	0	0.00%	1	2.13%	0	0.00%	7	4.43%	0	0.00%	13	2.67%
PAS	24	12.24%	2	12.50%	14	23.33%	0	0.00%	5	10.64%	1	50.00%	14	8.86%	1	16.67%	61	12.55%
SAL	0	0.00%	0	0.00%	0	0.00%	0	0.00%	0	0.00%	0	0.00%	1	0.63%	0	0.00%	1	0.21%
SOM	1	0.51%	0	0.00%	0	0.00%	0	0.00%	0	0.00%	0	0.00%	0	0.00%	0	0.00%	1	0.21%
SUS	1	0.51%	0	0.00%	0	0.00%	0	0.00%	0	0.00%	0	0.00%	1	0.63%	1	16.67%	3	0.62%
UNI	17	8.67%	2	12.50%	2	3.33%	0	0.00%	9	19.15%	0	0.00%	9	5.70%	1	16.67%	40	8.23%
OTHER	0	0.00%	0	0.00%	0	0.00%	0	0.00%	0	0.00%	0	0.00%	5	3.16%	0	0.00%	5	1.03%
<b>Total</b>	<b>196</b>	<b>100.00%</b>	<b>16</b>	<b>100.00%</b>	<b>60</b>	<b>100.00%</b>	<b>1</b>	<b>100.00%</b>	<b>47</b>	<b>100.00%</b>	<b>2</b>	<b>100.00%</b>	<b>158</b>	<b>100.00%</b>	<b>6</b>	<b>100.00%</b>	<b>486</b>	<b>100.00%</b>





Juvenile Demographics and Statistics

Current Grade	COMMITTED		WAIVED		PROBATIONER		Total
	MALE	FEMALE	MALE	FEMALE	MALE	FEMALE	
8	0 (0.00%)	0 (0.00%)	0 (0.00%)	0 (0.00%)	2 (4.26%)	0 (0.00%)	2 (0.62%)
9	17 (8.67%)	3 (18.75%)	4 (6.67%)	0 (0.00%)	12 (25.53%)	0 (0.00%)	36 (11.18%)
10	31 (15.82%)	5 (31.25%)	7 (11.67%)	0 (0.00%)	12 (25.53%)	0 (0.00%)	55 (17.08%)
11	30 (15.31%)	2 (12.50%)	7 (11.67%)	0 (0.00%)	7 (14.89%)	0 (0.00%)	46 (14.29%)
12	25 (12.76%)	1 (6.25%)	18 (30.00%)	0 (0.00%)	5 (10.64%)	0 (0.00%)	49 (15.22%)
HSG	70 (35.71%)	3 (18.75%)	23 (38.33%)	1 (100.00%)	6 (12.77%)	2 (100.00%)	105 (32.61%)
GED	7 (3.57%)	0 (0.00%)	1 (1.67%)	0 (0.00%)	1 (2.13%)	0 (0.00%)	9 (2.80%)
Others **	16 (8.16%)	2 (12.50%)	0 (0.00%)	0 (0.00%)	2 (4.26%)	0 (0.00%)	20 (6.21%)
<b>Total</b>	<b>196 (100.00%)</b>	<b>16 (100.00%)</b>	<b>60 (100.00%)</b>	<b>1 (100.00%)</b>	<b>47 (100.00%)</b>	<b>2 (100.00%)</b>	<b>322 (100.00%)</b>

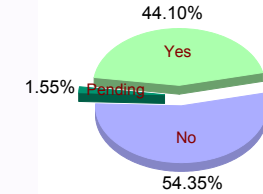


\*\* Includes Aged Out Juveniles and Pending Records

Special Education Services

	Yes	No	Pending	Total
COMMITTED	83 (42.35%)	109 (55.61%)	4 (2.04%)	196 (100.00%)
WAIVED	4 (25.00%)	12 (75.00%)	0 (0.00%)	16 (100.00%)
PROBATIONER	29 (48.33%)	31 (51.67%)	0 (0.00%)	60 (100.00%)
COMMITTED	1 (100.00%)	0 (0.00%)	0 (0.00%)	1 (100.00%)
WAIVED	24 (51.06%)	22 (46.81%)	1 (2.13%)	47 (100.00%)
PROBATIONER	1 (50.00%)	1 (50.00%)	0 (0.00%)	2 (100.00%)
<b>Total</b>	<b>142 (44.10%)</b>	<b>175 (54.35%)</b>	<b>5 (1.55%)</b>	<b>322 (100.00%)</b>

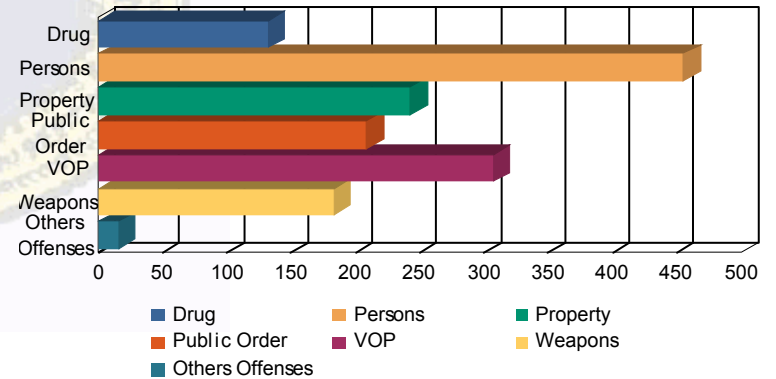
Special Education



Offense Categories

	COMMITTED	WAIVED	PROBATIONER	Total
Drug	109 (8.71%)	7 (9.86%)	5 (4.67%)	121 (37.44%)
Persons	352 (28.14%)	16 (22.54%)	58 (54.21%)	426 (132.89%)
Property	206 (16.47%)	12 (16.90%)	7 (6.54%)	225 (70.95%)
Public Order	173 (13.83%)	13 (18.31%)	10 (9.35%)	196 (61.49%)
VOP	253 (20.22%)	16 (22.54%)	8 (7.48%)	277 (86.24%)
Weapons	145 (11.59%)	6 (8.45%)	18 (16.82%)	169 (52.86%)
Others Offenses	13 (1.04%)	1 (1.41%)	1 (0.93%)	15 (4.68%)
<b>Total *</b>	<b>1,251 (100.00%)</b>	<b>71 (100.00%)</b>	<b>107 (100.00%)</b>	<b>1,545 (100.00%)</b>

Offense Categories



\* Juveniles may have multiple offenses