



Juvenile Demographics and Statistics

Race/ Ethnicity	COMMITTED				WAIVED				PROBATIONER				AFTERCARE				Total	
	MALE	FEMALE	MALE	FEMALE	MALE	FEMALE	MALE	FEMALE	MALE	FEMALE	MALE	FEMALE	MALE	FEMALE				
BLACK	150	71.43%	5	62.50%	25	64.10%	3	100.00%	27	62.79%	2	50.00%	106	65.43%	4	33.33%	322	66.94%
HISPANIC	38	18.10%	1	12.50%	10	25.64%	0	0.00%	9	20.93%	0	0.00%	38	23.46%	3	25.00%	99	20.58%
WHITE	20	9.52%	2	25.00%	4	10.26%	0	0.00%	6	13.95%	2	50.00%	17	10.49%	5	41.67%	56	11.64%
ASIAN	0	0.00%	0	0.00%	0	0.00%	0	0.00%	0	0.00%	0	0.00%	1	0.62%	0	0.00%	1	0.21%
Others	2	0.95%	0	0.00%	0	0.00%	0	0.00%	1	2.33%	0	0.00%	0	0.00%	0	0.00%	3	0.62%
<b>Total</b>	<b>210</b>	<b>100.00%</b>	<b>8</b>	<b>100.00%</b>	<b>39</b>	<b>100.00%</b>	<b>3</b>	<b>100.00%</b>	<b>43</b>	<b>100.00%</b>	<b>4</b>	<b>100.00%</b>	<b>162</b>	<b>100.00%</b>	<b>12</b>	<b>100.00%</b>	<b>481</b>	<b>100.00%</b>

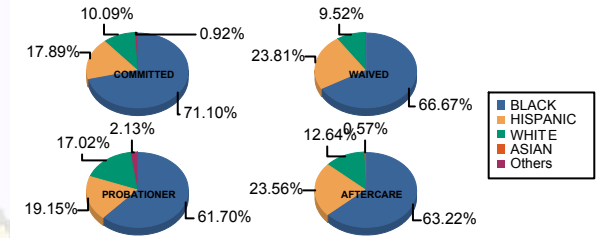
Age

13 and Below	1	0.48%	0	0.00%	0	0.00%	0	0.00%	0	0.00%	0	0.00%	0	0.00%	0	0.00%	1	0.21%
14	1	0.48%	0	0.00%	0	0.00%	0	0.00%	1	2.33%	0	0.00%	0	0.00%	0	0.00%	2	0.42%
15	3	1.43%	0	0.00%	0	0.00%	0	0.00%	1	2.33%	1	25.00%	0	0.00%	0	0.00%	5	1.04%
16	20	9.52%	2	25.00%	1	2.56%	0	0.00%	16	37.21%	2	50.00%	2	1.23%	1	8.33%	44	9.15%
17	37	17.62%	0	0.00%	6	15.38%	0	0.00%	13	30.23%	0	0.00%	14	8.64%	2	16.67%	72	14.97%
18	60	28.57%	2	25.00%	5	12.82%	1	33.33%	12	27.91%	0	0.00%	18	11.11%	1	8.33%	99	20.58%
19	39	18.57%	3	37.50%	16	41.03%	1	33.33%	0	0.00%	1	25.00%	45	27.78%	2	16.67%	107	22.25%
20 and Above	49	23.33%	1	12.50%	11	28.21%	1	33.33%	0	0.00%	0	0.00%	83	51.23%	6	50.00%	151	31.39%
<b>Total</b>	<b>210</b>	<b>100.00%</b>	<b>8</b>	<b>100.00%</b>	<b>39</b>	<b>100.00%</b>	<b>3</b>	<b>100.00%</b>	<b>43</b>	<b>100.00%</b>	<b>4</b>	<b>100.00%</b>	<b>162</b>	<b>100.00%</b>	<b>12</b>	<b>100.00%</b>	<b>481</b>	<b>100.00%</b>
<b>Average Age</b>	<b>18.40</b>		<b>18.38</b>		<b>18.79</b>		<b>19.00</b>		<b>16.79</b>		<b>16.50</b>		<b>20.30</b>		<b>19.42</b>		<b>18.94</b>	

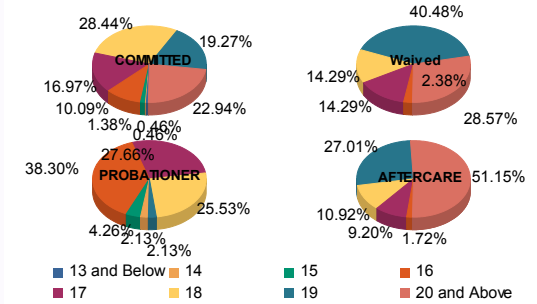
Sentencing County

ATL	7	3.33%	0	0.00%	5	12.82%	0	0.00%	0	0.00%	0	0.00%	12	7.41%	1	8.33%	25	5.20%
BER	8	3.81%	0	0.00%	0	0.00%	0	0.00%	2	4.65%	0	0.00%	3	1.85%	0	0.00%	13	2.70%
BUR	9	4.29%	2	25.00%	0	0.00%	0	0.00%	1	2.33%	0	0.00%	4	2.47%	1	8.33%	17	3.53%
CAM	43	20.48%	2	25.00%	6	15.38%	3	100.00%	9	20.93%	3	75.00%	28	17.28%	2	16.67%	96	19.96%
CAP	0	0.00%	0	0.00%	0	0.00%	0	0.00%	1	2.33%	0	0.00%	1	0.62%	0	0.00%	2	0.42%
CUM	6	2.86%	0	0.00%	0	0.00%	0	0.00%	3	6.98%	0	0.00%	8	4.94%	0	0.00%	17	3.53%
ESS	40	19.05%	0	0.00%	3	7.69%	0	0.00%	5	11.63%	0	0.00%	12	7.41%	1	8.33%	61	12.68%
GLO	1	0.48%	0	0.00%	0	0.00%	0	0.00%	0	0.00%	0	0.00%	0	0.00%	0	0.00%	1	0.21%
HUD	6	2.86%	0	0.00%	0	0.00%	0	0.00%	3	6.98%	0	0.00%	6	3.70%	0	0.00%	15	3.12%
MER	19	9.05%	0	0.00%	4	10.26%	0	0.00%	3	6.98%	1	25.00%	19	11.73%	3	25.00%	49	10.19%
MID	26	12.38%	3	37.50%	5	12.82%	0	0.00%	4	9.30%	0	0.00%	15	9.26%	1	8.33%	54	11.23%
MON	6	2.86%	0	0.00%	3	7.69%	0	0.00%	0	0.00%	0	0.00%	3	1.85%	0	0.00%	12	2.49%
MOR	3	1.43%	0	0.00%	0	0.00%	0	0.00%	0	0.00%	0	0.00%	1	0.62%	0	0.00%	4	0.83%
OCE	7	3.33%	0	0.00%	4	10.26%	0	0.00%	3	6.98%	0	0.00%	8	4.94%	0	0.00%	22	4.57%
PAS	16	7.62%	0	0.00%	9	23.08%	0	0.00%	6	13.95%	0	0.00%	22	13.58%	1	8.33%	54	11.23%
SAL	0	0.00%	0	0.00%	0	0.00%	0	0.00%	1	2.33%	0	0.00%	2	1.23%	0	0.00%	3	0.62%
SOM	1	0.48%	0	0.00%	0	0.00%	0	0.00%	0	0.00%	0	0.00%	1	0.62%	0	0.00%	2	0.42%
SUS	2	0.95%	0	0.00%	0	0.00%	0	0.00%	0	0.00%	0	0.00%	0	0.00%	1	8.33%	3	0.62%
UNI	10	4.76%	1	12.50%	0	0.00%	0	0.00%	2	4.65%	0	0.00%	13	8.02%	1	8.33%	27	5.61%
WAR	0	0.00%	0	0.00%	0	0.00%	0	0.00%	0	0.00%	0	0.00%	1	0.62%	0	0.00%	1	0.21%
OTHER	0	0.00%	0	0.00%	0	0.00%	0	0.00%	0	0.00%	0	0.00%	3	1.85%	0	0.00%	3	0.62%
<b>Total</b>	<b>210</b>	<b>100.00%</b>	<b>8</b>	<b>100.00%</b>	<b>39</b>	<b>100.00%</b>	<b>3</b>	<b>100.00%</b>	<b>43</b>	<b>100.00%</b>	<b>4</b>	<b>100.00%</b>	<b>162</b>	<b>100.00%</b>	<b>12</b>	<b>100.00%</b>	<b>481</b>	<b>100.00%</b>

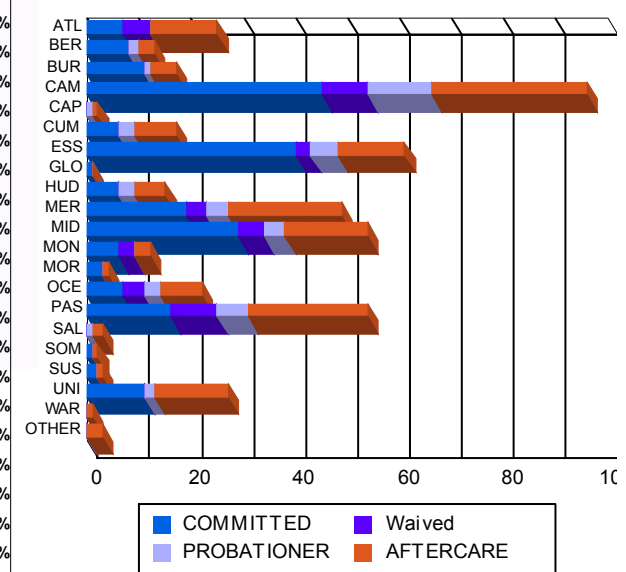
Race/Ethnicity Grouping



Age Grouping



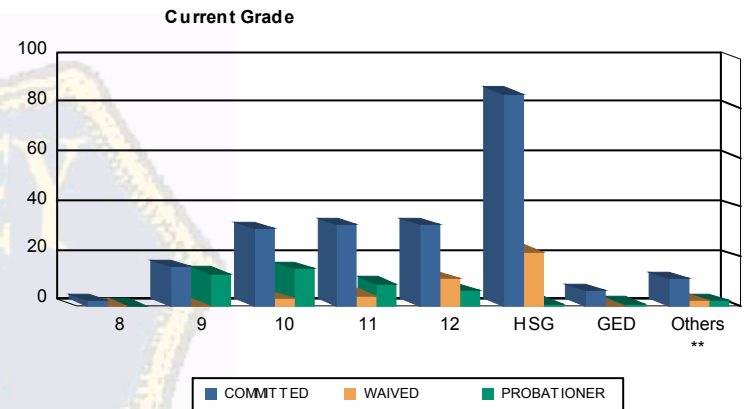
Count of Juveniles By Sentencing County





Juvenile Demographics and Statistics

Current Grade	COMMITTED		WAIVED		PROBATIONER		Total
	MALE	FEMALE	MALE	FEMALE	MALE	FEMALE	
8	2 (0.95%)	0 (0.00%)	0 (0.00%)	0 (0.00%)	0 (0.00%)	0 (0.00%)	2 (0.65%)
9	15 (7.14%)	1 (12.50%)	0 (0.00%)	0 (0.00%)	11 (25.58%)	2 (50.00%)	29 (9.45%)
10	30 (14.29%)	1 (12.50%)	3 (7.69%)	0 (0.00%)	15 (34.88%)	0 (0.00%)	49 (15.96%)
11	29 (13.81%)	4 (50.00%)	4 (10.26%)	0 (0.00%)	8 (18.60%)	1 (25.00%)	46 (14.98%)
12	33 (15.71%)	0 (0.00%)	10 (25.64%)	1 (33.33%)	6 (13.95%)	0 (0.00%)	50 (16.29%)
HSG	85 (40.48%)	1 (12.50%)	20 (51.28%)	2 (66.67%)	0 (0.00%)	1 (25.00%)	109 (35.50%)
GED	6 (2.86%)	0 (0.00%)	0 (0.00%)	0 (0.00%)	1 (2.33%)	0 (0.00%)	7 (2.28%)
Others **	10 (4.76%)	1 (12.50%)	2 (5.13%)	0 (0.00%)	2 (4.65%)	0 (0.00%)	15 (4.89%)
<b>Total</b>	<b>210 (100.00%)</b>	<b>8 (100.00%)</b>	<b>39 (100.00%)</b>	<b>3 (100.00%)</b>	<b>43 (100.00%)</b>	<b>4 (100.00%)</b>	<b>307 (100.00%)</b>

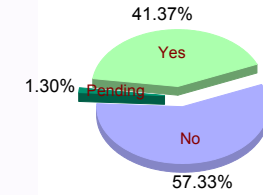


\*\* Includes Aged Out Juveniles and Pending Records

Special Education Services

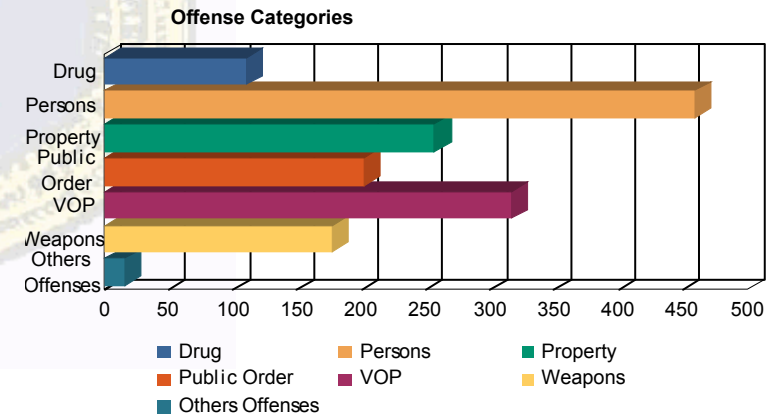
Yes	90 (42.86%)	3 (37.50%)	11 (28.21%)	2 (66.67%)	21 (48.84%)	0 (0.00%)	127 (41.37%)
No	119 (56.67%)	5 (62.50%)	27 (69.23%)	1 (33.33%)	20 (46.51%)	4 (100.00%)	176 (57.33%)
Pending	1 (0.48%)	0 (0.00%)	1 (2.56%)	0 (0.00%)	2 (4.65%)	0 (0.00%)	4 (1.30%)
<b>Total</b>	<b>210 (100.00%)</b>	<b>8 (100.00%)</b>	<b>39 (100.00%)</b>	<b>3 (100.00%)</b>	<b>43 (100.00%)</b>	<b>4 (100.00%)</b>	<b>307 (100.00%)</b>

Special Education



Offense Categories

Drug	80 (6.42%)	6 (10.53%)	5 (7.58%)	1 (7.14%)	18 (12.41%)	0 (0.00%)	110 (7.16%)
Persons	374 (30.02%)	16 (28.07%)	32 (48.48%)	5 (35.71%)	29 (20.00%)	3 (33.33%)	459 (29.86%)
Property	214 (17.17%)	8 (14.04%)	4 (6.06%)	2 (14.29%)	27 (18.62%)	2 (22.22%)	257 (16.72%)
Public Order	166 (13.32%)	10 (17.54%)	5 (7.58%)	2 (14.29%)	18 (12.41%)	1 (11.11%)	202 (13.14%)
VOP	258 (20.71%)	11 (19.30%)	3 (4.55%)	2 (14.29%)	39 (26.90%)	3 (33.33%)	316 (20.56%)
Weapons	140 (11.24%)	5 (8.77%)	17 (25.76%)	1 (7.14%)	14 (9.66%)	0 (0.00%)	177 (11.52%)
Others Offenses	14 (1.12%)	1 (1.75%)	0 (0.00%)	1 (7.14%)	0 (0.00%)	0 (0.00%)	16 (1.04%)
<b>Total *</b>	<b>1,246 (100.00%)</b>	<b>57 (100.00%)</b>	<b>66 (100.00%)</b>	<b>14 (100.00%)</b>	<b>145 (100.00%)</b>	<b>9 (100.00%)</b>	<b>1,537 (100.00%)</b>



\* Juveniles may have multiple offenses