



Juvenile Demographics and Statistics

Race/ Ethnicity	COMMITTED		WAIVED		PROBATIONER		AFTERCARE		Total									
	MALE	FEMALE	MALE	FEMALE	MALE	FEMALE	MALE	FEMALE										
BLACK	137	70.26%	8	47.06%	31	51.67%	1	100.00%	30	65.22%	0	0.00%	113	70.63%	3	60.00%	323	66.60%
HISPANIC	38	19.49%	1	5.88%	19	31.67%	0	0.00%	11	23.91%	0	0.00%	26	16.25%	1	20.00%	96	19.79%
WHITE	19	9.74%	8	47.06%	9	15.00%	0	0.00%	5	10.87%	1	100.00%	20	12.50%	1	20.00%	63	12.99%
Others	1	0.51%	0	0.00%	1	1.67%	0	0.00%	0	0.00%	0	0.00%	1	0.63%	0	0.00%	3	0.62%
<b>Total</b>	<b>195</b>	<b>100.00%</b>	<b>17</b>	<b>100.00%</b>	<b>60</b>	<b>100.00%</b>	<b>1</b>	<b>100.00%</b>	<b>46</b>	<b>100.00%</b>	<b>1</b>	<b>100.00%</b>	<b>160</b>	<b>100.00%</b>	<b>5</b>	<b>100.00%</b>	<b>485</b>	<b>100.00%</b>

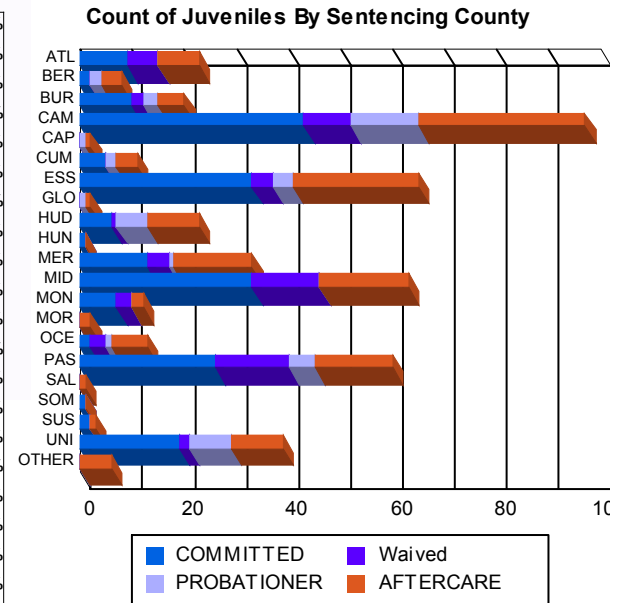
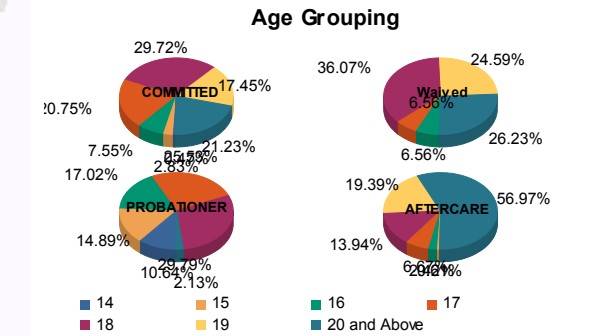
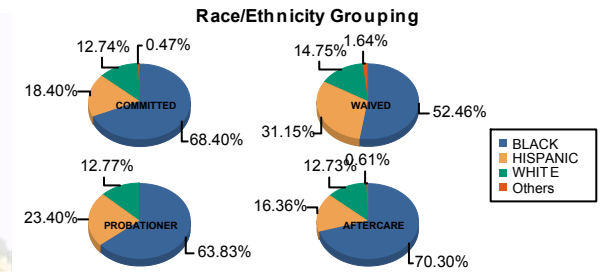
**Age**

14	1	0.51%	0	0.00%	0	0.00%	0	0.00%	5	10.87%	0	0.00%	0	0.00%	0	0.00%	6	1.24%
15	6	3.08%	0	0.00%	0	0.00%	0	0.00%	7	15.22%	0	0.00%	1	0.63%	0	0.00%	14	2.89%
16	14	7.18%	2	11.76%	4	6.67%	0	0.00%	8	17.39%	0	0.00%	4	2.50%	0	0.00%	32	6.60%
17	39	20.00%	5	29.41%	4	6.67%	0	0.00%	12	26.09%	0	0.00%	11	6.88%	0	0.00%	71	14.64%
18	61	31.28%	2	11.76%	22	36.67%	0	0.00%	14	30.43%	0	0.00%	23	14.38%	0	0.00%	122	25.15%
19	37	18.97%	0	0.00%	14	23.33%	1	100.00%	0	0.00%	0	0.00%	31	19.38%	1	20.00%	84	17.32%
20 and Above	37	18.97%	8	47.06%	16	26.67%	0	0.00%	0	0.00%	1	100.00%	90	56.25%	4	80.00%	156	32.16%
<b>Total</b>	<b>195</b>	<b>100.00%</b>	<b>17</b>	<b>100.00%</b>	<b>60</b>	<b>100.00%</b>	<b>1</b>	<b>100.00%</b>	<b>46</b>	<b>100.00%</b>	<b>1</b>	<b>100.00%</b>	<b>160</b>	<b>100.00%</b>	<b>5</b>	<b>100.00%</b>	<b>485</b>	<b>100.00%</b>

Average Age	18.32	18.71	18.67	19.00	16.50	20.00	20.28	22.00	18.89
-------------	-------	-------	-------	-------	-------	-------	-------	-------	-------

**Sentencing County**

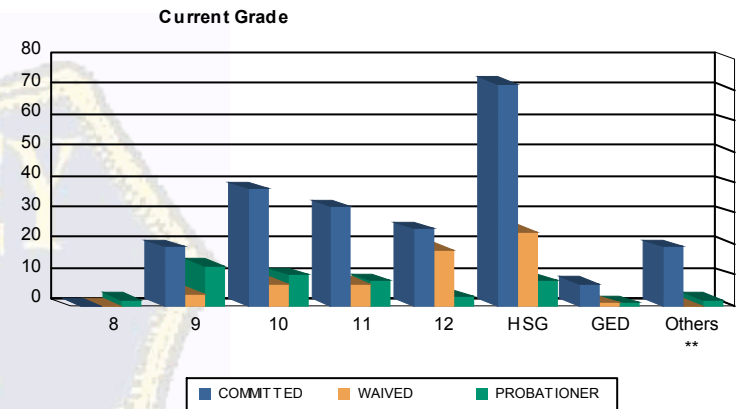
ATL	9	4.62%	0	0.00%	6	10.00%	0	0.00%	0	0.00%	7	4.38%	1	20.00%	23	4.74%		
BER	2	1.03%	0	0.00%	0	0.00%	0	0.00%	2	4.35%	0	0.00%	4	2.50%	0	0.00%	8	1.65%
BUR	9	4.62%	1	5.88%	2	3.33%	0	0.00%	3	6.52%	0	0.00%	4	2.50%	1	20.00%	20	4.12%
CAM	39	20.00%	4	23.53%	8	13.33%	1	100.00%	12	26.09%	1	100.00%	32	20.00%	0	0.00%	97	20.00%
CAP	0	0.00%	0	0.00%	0	0.00%	0	0.00%	1	2.17%	0	0.00%	1	0.63%	0	0.00%	2	0.41%
CUM	4	2.05%	1	5.88%	0	0.00%	0	0.00%	2	4.35%	0	0.00%	4	2.50%	0	0.00%	11	2.27%
ESS	33	16.92%	0	0.00%	4	6.67%	0	0.00%	4	8.70%	0	0.00%	23	14.38%	1	20.00%	65	13.40%
GLO	0	0.00%	0	0.00%	0	0.00%	0	0.00%	1	2.17%	0	0.00%	1	0.63%	0	0.00%	2	0.41%
HUD	6	3.08%	0	0.00%	1	1.67%	0	0.00%	6	13.04%	0	0.00%	10	6.25%	0	0.00%	23	4.74%
HUN	1	0.51%	0	0.00%	0	0.00%	0	0.00%	0	0.00%	0	0.00%	0	0.00%	0	0.00%	1	0.21%
MER	11	5.64%	2	11.76%	4	6.67%	0	0.00%	1	2.17%	0	0.00%	15	9.38%	0	0.00%	33	6.80%
MID	29	14.87%	4	23.53%	13	21.67%	0	0.00%	0	0.00%	0	0.00%	17	10.63%	0	0.00%	63	12.99%
MON	7	3.59%	0	0.00%	3	5.00%	0	0.00%	0	0.00%	0	0.00%	2	1.25%	0	0.00%	12	2.47%
MOR	0	0.00%	0	0.00%	0	0.00%	0	0.00%	0	0.00%	0	0.00%	2	1.25%	0	0.00%	2	0.41%
OCE	2	1.03%	0	0.00%	3	5.00%	0	0.00%	1	2.17%	0	0.00%	7	4.38%	0	0.00%	13	2.68%
PAS	24	12.31%	2	11.76%	14	23.33%	0	0.00%	5	10.87%	0	0.00%	14	8.75%	1	20.00%	60	12.37%
SAL	0	0.00%	0	0.00%	0	0.00%	0	0.00%	0	0.00%	0	0.00%	1	0.63%	0	0.00%	1	0.21%
SOM	1	0.51%	0	0.00%	0	0.00%	0	0.00%	0	0.00%	0	0.00%	0	0.00%	0	0.00%	1	0.21%
SUS	1	0.51%	1	5.88%	0	0.00%	0	0.00%	0	0.00%	0	0.00%	1	0.63%	0	0.00%	3	0.62%
UNI	17	8.72%	2	11.76%	2	3.33%	0	0.00%	8	17.39%	0	0.00%	9	5.63%	1	20.00%	39	8.04%
OTHER	0	0.00%	0	0.00%	0	0.00%	0	0.00%	0	0.00%	0	0.00%	6	3.75%	0	0.00%	6	1.24%
<b>Total</b>	<b>195</b>	<b>100.00%</b>	<b>17</b>	<b>100.00%</b>	<b>60</b>	<b>100.00%</b>	<b>1</b>	<b>100.00%</b>	<b>46</b>	<b>100.00%</b>	<b>1</b>	<b>100.00%</b>	<b>160</b>	<b>100.00%</b>	<b>5</b>	<b>100.00%</b>	<b>485</b>	<b>100.00%</b>





Juvenile Demographics and Statistics

Current Grade	COMMITTED		WAIVED		PROBATIONER		Total
	MALE	FEMALE	MALE	FEMALE	MALE	FEMALE	
8	0 (0.00%)	0 (0.00%)	0 (0.00%)	0 (0.00%)	2 (4.35%)	0 (0.00%)	2 (0.63%)
9	16 (8.21%)	3 (17.65%)	4 (6.67%)	0 (0.00%)	13 (28.26%)	0 (0.00%)	36 (11.25%)
10	33 (16.92%)	5 (29.41%)	7 (11.67%)	0 (0.00%)	10 (21.74%)	0 (0.00%)	55 (17.19%)
11	31 (15.90%)	1 (5.88%)	7 (11.67%)	0 (0.00%)	8 (17.39%)	0 (0.00%)	47 (14.69%)
12	23 (11.79%)	2 (11.76%)	18 (30.00%)	0 (0.00%)	3 (6.52%)	0 (0.00%)	46 (14.38%)
HSG	68 (34.87%)	4 (23.53%)	23 (38.33%)	1 (100.00%)	7 (15.22%)	1 (100.00%)	104 (32.50%)
GED	7 (3.59%)	0 (0.00%)	1 (1.67%)	0 (0.00%)	1 (2.17%)	0 (0.00%)	9 (2.81%)
Others **	17 (8.72%)	2 (11.76%)	0 (0.00%)	0 (0.00%)	2 (4.35%)	0 (0.00%)	21 (6.56%)
<b>Total</b>	<b>195 (100.00%)</b>	<b>17 (100.00%)</b>	<b>60 (100.00%)</b>	<b>1 (100.00%)</b>	<b>46 (100.00%)</b>	<b>1 (100.00%)</b>	<b>320 (100.00%)</b>

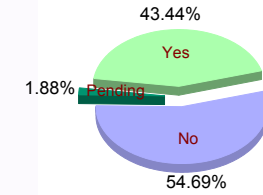


\*\* Includes Aged Out Juveniles and Pending Records

Special Education Services

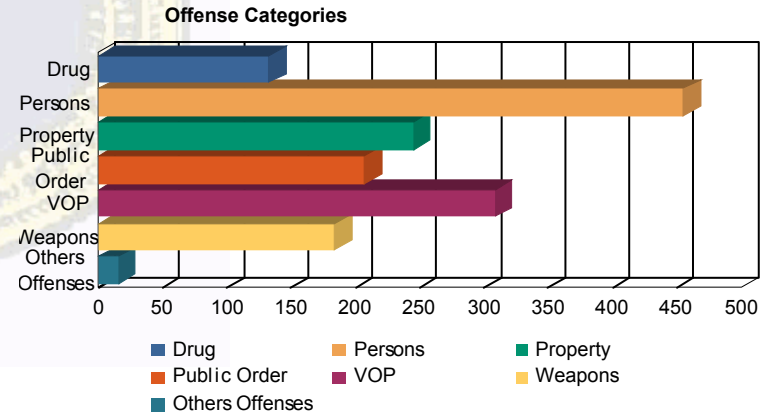
Yes	83 (42.56%)	4 (23.53%)	29 (48.33%)	1 (100.00%)	22 (47.83%)	0 (0.00%)	139 (43.44%)
No	107 (54.87%)	13 (76.47%)	31 (51.67%)	0 (0.00%)	23 (50.00%)	1 (100.00%)	175 (54.69%)
Pending	5 (2.56%)	0 (0.00%)	0 (0.00%)	0 (0.00%)	1 (2.17%)	0 (0.00%)	6 (1.88%)
<b>Total</b>	<b>195 (100.00%)</b>	<b>17 (100.00%)</b>	<b>60 (100.00%)</b>	<b>1 (100.00%)</b>	<b>46 (100.00%)</b>	<b>1 (100.00%)</b>	<b>320 (100.00%)</b>

Special Education



Offense Categories

Drug	111 (8.84%)	7 (9.72%)	5 (4.46%)	0 (0.00%)	10 (9.26%)	0 (0.00%)	133 (8.59%)
Persons	352 (28.05%)	16 (22.22%)	60 (53.57%)	1 (100.00%)	26 (24.07%)	0 (0.00%)	455 (29.37%)
Property	209 (16.65%)	13 (18.06%)	7 (6.25%)	0 (0.00%)	16 (14.81%)	0 (0.00%)	245 (15.82%)
Public Order	171 (13.63%)	13 (18.06%)	11 (9.82%)	0 (0.00%)	12 (11.11%)	0 (0.00%)	207 (13.36%)
VOP	254 (20.24%)	16 (22.22%)	9 (8.04%)	0 (0.00%)	29 (26.85%)	1 (100.00%)	309 (19.95%)
Weapons	145 (11.55%)	6 (8.33%)	19 (16.96%)	0 (0.00%)	14 (12.96%)	0 (0.00%)	184 (11.88%)
Others Offenses	13 (1.04%)	1 (1.39%)	1 (0.89%)	0 (0.00%)	1 (0.93%)	0 (0.00%)	16 (1.03%)
<b>Total *</b>	<b>1,255 (100.00%)</b>	<b>72 (100.00%)</b>	<b>112 (100.00%)</b>	<b>1 (100.00%)</b>	<b>108 (100.00%)</b>	<b>1 (100.00%)</b>	<b>1,549 (100.00%)</b>



\* Juveniles may have multiple offenses