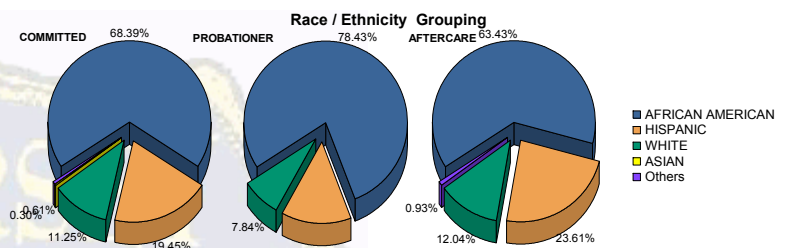


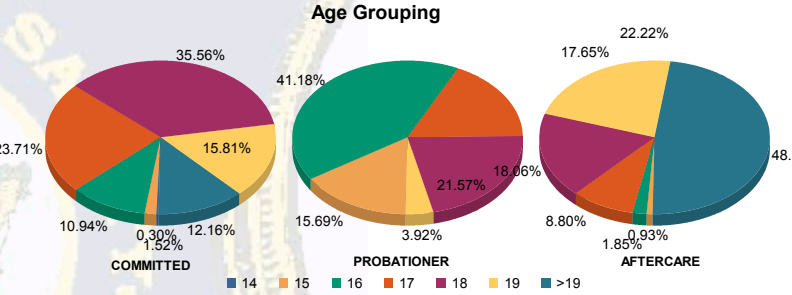


Juvenile Demographics and Statistics

Race/Ethnicity	COMMITTED				PROBATIONER				AFTERCARE				Total	
	MALE	FEMALE	MALE	FEMALE	MALE	FEMALE	MALE	FEMALE	MALE	FEMALE	MALE	FEMALE		
AFRICAN AMERICAN	216	68.79%	9	60.00%	40	80.00%	0	0.00%	126	62.38%	11	78.57%	402	67.45%
HISPANIC	62	19.75%	2	13.33%	7	14.00%	0	0.00%	49	24.26%	2	14.29%	122	20.47%
WHITE	33	10.51%	4	26.67%	3	6.00%	1	100.00%	25	12.38%	1	7.14%	67	11.24%
ASIAN	1	0.32%	0	0.00%	0	0.00%	0	0.00%	0	0.00%	0	0.00%	1	0.17%
Others	2	0.64%	0	0.00%	0	0.00%	0	0.00%	2	0.99%	0	0.00%	4	0.67%
<b>Total</b>	<b>314</b>	<b>100.00%</b>	<b>15</b>	<b>100.00%</b>	<b>50</b>	<b>100.00%</b>	<b>1</b>	<b>100.00%</b>	<b>202</b>	<b>100.00%</b>	<b>14</b>	<b>100.00%</b>	<b>596</b>	<b>100.00%</b>



Age	MALE	FEMALE	MALE	FEMALE	MALE	FEMALE	MALE	FEMALE	MALE	FEMALE	Total			
14	1	0.32%	0	0.00%	0	0.00%	0	0.00%	0	0.00%	1	0.17%		
15	3	0.96%	2	13.33%	8	16.00%	0	0.00%	1	0.50%	15	2.52%		
16	34	10.83%	2	13.33%	21	42.00%	0	0.00%	2	0.99%	61	10.23%		
17	73	23.25%	5	33.33%	9	18.00%	0	0.00%	16	7.92%	106	17.79%		
18	112	35.67%	5	33.33%	10	20.00%	1	100.00%	38	18.81%	167	28.02%		
19	51	16.24%	1	6.67%	2	4.00%	0	0.00%	43	21.29%	102	17.11%		
>19	40	12.74%	0	0.00%	0	0.00%	0	0.00%	102	50.50%	2	0.34%		
<b>Total</b>	<b>314</b>	<b>100.00%</b>	<b>15</b>	<b>100.00%</b>	<b>50</b>	<b>100.00%</b>	<b>1</b>	<b>100.00%</b>	<b>202</b>	<b>100.00%</b>	<b>14</b>	<b>100.00%</b>	<b>596</b>	<b>100.00%</b>

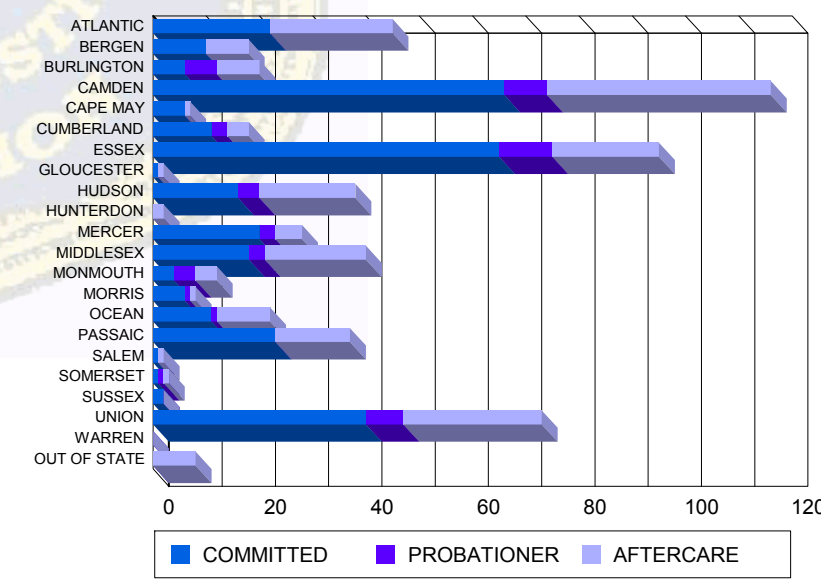


Average Age	COMMITTED	PROBATIONER	AFTERCARE	Total
Average Age	18.02	17.07	16.54	18.50

**Sentencing County**

ATLANTIC	22	7.01%	0	0.00%	0	0.00%	0	0.00%	21	10.40%	2	14.29%	45	7.55%
BERGEN	9	2.87%	1	6.67%	0	0.00%	0	0.00%	7	3.47%	1	7.14%	18	3.02%
BURLINGTON	6	1.91%	0	0.00%	6	12.00%	0	0.00%	8	3.96%	0	0.00%	20	3.36%
CAMDEN	62	19.75%	4	26.67%	7	14.00%	1	100.00%	40	19.80%	2	14.29%	116	19.46%
CAPE MAY	6	1.91%	0	0.00%	0	0.00%	0	0.00%	1	0.50%	0	0.00%	7	1.17%
CUMBERLAND	11	3.50%	0	0.00%	3	6.00%	0	0.00%	3	1.49%	1	7.14%	18	3.02%
ESSEX	61	19.43%	4	26.67%	10	20.00%	0	0.00%	17	8.42%	3	21.43%	95	15.94%
GLOUCESTER	1	0.32%	0	0.00%	0	0.00%	0	0.00%	1	0.50%	0	0.00%	2	0.34%
HUDSON	15	4.78%	1	6.67%	4	8.00%	0	0.00%	17	8.42%	1	7.14%	38	6.38%
HUNTERDON	0	0.00%	0	0.00%	0	0.00%	0	0.00%	2	0.99%	0	0.00%	2	0.34%
MERCER	18	5.73%	2	13.33%	3	6.00%	0	0.00%	5	2.48%	0	0.00%	28	4.70%
MIDDLESEX	18	5.73%	0	0.00%	3	6.00%	0	0.00%	19	9.41%	0	0.00%	40	6.71%
MONMOUTH	4	1.27%	0	0.00%	4	8.00%	0	0.00%	4	1.98%	0	0.00%	12	2.01%
MORRIS	6	1.91%	0	0.00%	1	2.00%	0	0.00%	1	0.50%	0	0.00%	8	1.34%
OCEAN	10	3.18%	1	6.67%	1	2.00%	0	0.00%	10	4.95%	0	0.00%	22	3.69%
PASSAIC	22	7.01%	1	6.67%	0	0.00%	0	0.00%	14	6.93%	0	0.00%	37	6.21%
SALEM	1	0.32%	0	0.00%	0	0.00%	0	0.00%	1	0.50%	0	0.00%	2	0.34%
SOMERSET	1	0.32%	0	0.00%	1	2.00%	0	0.00%	1	0.50%	0	0.00%	3	0.50%
SUSSEX	2	0.64%	0	0.00%	0	0.00%	0	0.00%	0	0.00%	0	0.00%	2	0.34%
UNION	39	12.42%	1	6.67%	7	14.00%	0	0.00%	24	11.88%	2	14.29%	73	12.25%
WARREN	0	0.00%	0	0.00%	0	0.00%	0	0.00%	0	0.00%	0	0.00%	0	0.00%
OUT OF STATE	0	0.00%	0	0.00%	0	0.00%	0	0.00%	6	2.97%	2	14.29%	8	1.34%
<b>Total</b>	<b>314</b>	<b>100.00%</b>	<b>15</b>	<b>100.00%</b>	<b>50</b>	<b>100.00%</b>	<b>1</b>	<b>100.00%</b>	<b>202</b>	<b>100.00%</b>	<b>14</b>	<b>100.00%</b>	<b>596</b>	<b>100.00%</b>

**Count of Juveniles By Sentencing County**





Juvenile Demographics and Statistics

Current Grade	COMMITTED		PROBATIONER		Total	
	MALE	FEMALE	MALE	FEMALE		
7	1 (0.32%)	0 0.00%	0 0.00%	0 0.00%	1 (0.26%)	
8	1 (0.32%)	0 0.00%	1 (2.00%)	0 0.00%	2 (0.53%)	
9	38 (12.10%)	3 (20.00%)	15 (30.00%)	0 0.00%	56 (14.74%)	
10	57 (18.15%)	4 (26.67%)	14 (28.00%)	0 0.00%	75 (19.74%)	
11	69 (21.97%)	3 (20.00%)	11 (22.00%)	0 0.00%	83 (21.84%)	
12	60 (19.11%)	2 (13.33%)	3 (6.00%)	0 0.00%	65 (17.11%)	
HSG	61 (19.43%)	2 (13.33%)	2 (4.00%)	1 (100.00%)	66 (17.37%)	
GED	24 (7.64%)	1 (6.67%)	3 (6.00%)	0 0.00%	28 (7.37%)	
Others **	3 (0.96%)	0 0.00%	1 (2.00%)	0 0.00%	4 (1.05%)	
<b>Total</b>	<b>314 (100.00%)</b>	<b>15 (100.00%)</b>	<b>50 (100.00%)</b>	<b>1 (100.00%)</b>	<b>380 (100.00%)</b>	

\*\* Includes Aged Out Juveniles and Pending Records

**Special Education Services**

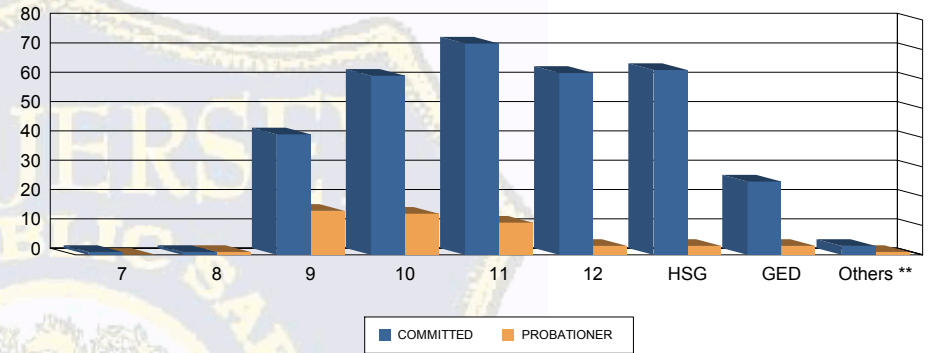
Yes	146 (46.50%)	9 (60.00%)	22 (44.00%)	0 0.00%	177 (46.58%)
No	168 (53.50%)	6 (40.00%)	27 (54.00%)	1 (100.00%)	202 (53.16%)
Pending	0 0.00%	0 0.00%	1 (2.00%)	0 0.00%	1 (0.26%)
<b>Total</b>	<b>314 (100.00%)</b>	<b>15 (100.00%)</b>	<b>50 (100.00%)</b>	<b>1 (100.00%)</b>	<b>380 (100.00%)</b>

**Offense Categories**

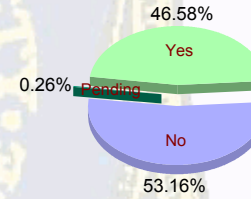
Drug	155 (8.83%)	2 (2.50%)	6 (5.66%)	0 0.00%	163 (8.39%)
Persons	490 (27.92%)	21 (26.25%)	30 (28.30%)	0 0.00%	541 (27.86%)
Property	325 (18.52%)	17 (21.25%)	15 (14.15%)	0 0.00%	357 (18.38%)
Public Order	217 (12.36%)	14 (17.50%)	11 (10.38%)	0 0.00%	242 (12.46%)
VOP	382 (21.77%)	19 (23.75%)	30 (28.30%)	1 (100.00%)	432 (22.25%)
Weapons	186 (10.60%)	7 (8.75%)	14 (13.21%)	0 0.00%	207 (10.66%)
<b>Total *</b>	<b>1,755 (100.00%)</b>	<b>80 (100.00%)</b>	<b>106 (100.00%)</b>	<b>1 (100.00%)</b>	<b>1,942 (100.00%)</b>

\* Juveniles may have multiple offenses

**Current Grade**



**Special Education**



**Offense Categories**

