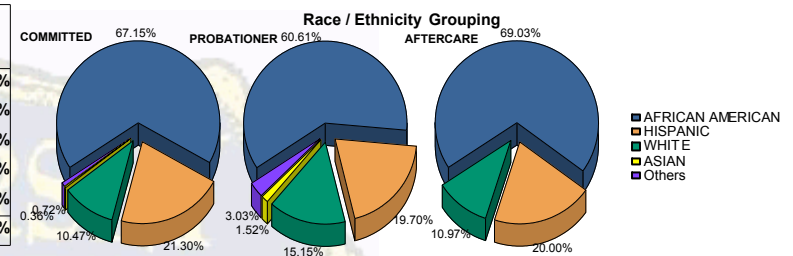


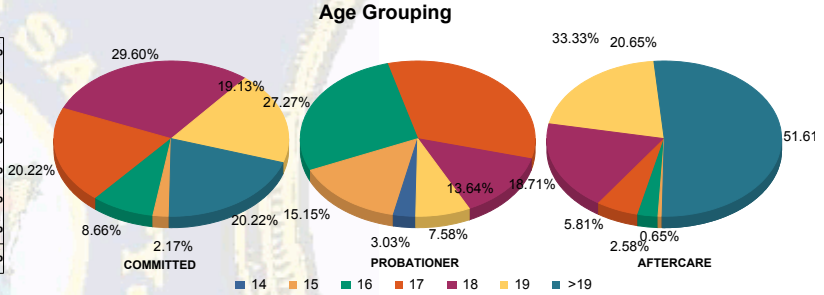


Juvenile Demographics and Statistics

Race/Ethnicity	COMMITTED				PROBATIONER				AFTERCARE				Total	
	MALE	FEMALE	MALE	FEMALE	MALE	FEMALE	MALE	FEMALE	MALE	FEMALE	MALE	FEMALE		
AFRICAN AMERICAN	179	68.06%	7	50.00%	38	63.33%	2	33.33%	103	70.07%	4	50.00%	333	66.87%
HISPANIC	58	22.05%	1	7.14%	12	20.00%	1	16.67%	29	19.73%	2	25.00%	103	20.68%
WHITE	23	8.75%	6	42.86%	7	11.67%	3	50.00%	15	10.20%	2	25.00%	56	11.24%
ASIAN	1	0.38%	0	0.00%	1	1.67%	0	0.00%	0	0.00%	0	0.00%	2	0.40%
Others	2	0.76%	0	0.00%	2	3.33%	0	0.00%	0	0.00%	0	0.00%	4	0.80%
Total	263	100.00%	14	100.00%	60	100.00%	6	100.00%	147	100.00%	8	100.00%	498	100.00%



Age	MALE	FEMALE	MALE	FEMALE	MALE	FEMALE	MALE	FEMALE	MALE	FEMALE	Total	Percentage
14	0	0.00%	0	0.00%	1	1.67%	1	16.67%	0	0.00%	2	0.40%
15	5	1.90%	1	7.14%	10	16.67%	0	0.00%	1	0.68%	17	3.41%
16	23	8.75%	1	7.14%	17	28.33%	0	0.00%	4	2.72%	46	9.24%
17	52	19.77%	4	28.57%	21	35.00%	1	16.67%	9	6.12%	87	17.47%
18	79	30.04%	3	21.43%	8	13.33%	1	16.67%	27	18.37%	120	24.10%
19	49	18.63%	4	28.57%	3	5.00%	2	33.33%	32	21.77%	90	18.07%
>19	55	20.91%	1	7.14%	0	0.00%	0	0.00%	74	50.34%	136	27.31%
Total	263	100.00%	14	100.00%	60	100.00%	6	100.00%	147	100.00%	498	100.00%

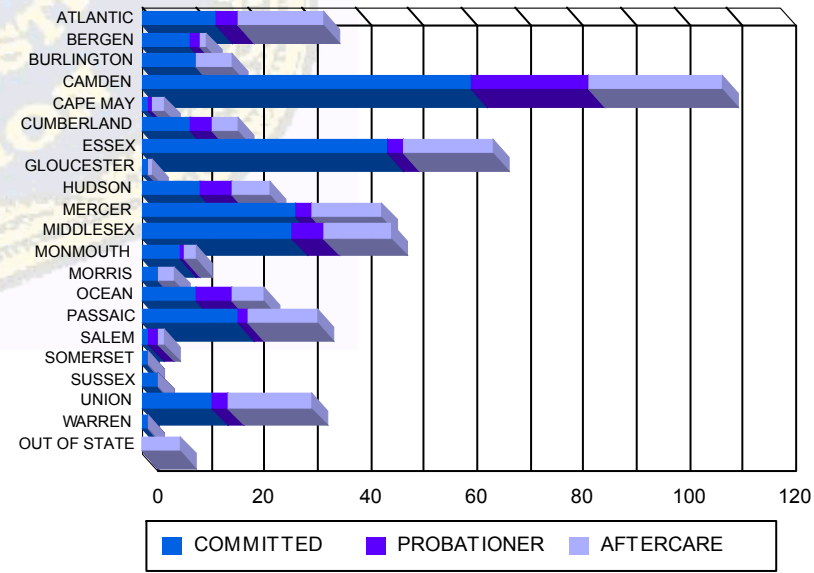


Average Age	COMMITTED	FEMALE	PROBATIONER	FEMALE	AFTERCARE	FEMALE	Total
Average Age	18.36	17.93	16.57	17.17	20.18	20.75	18.69

Sentencing County

County	MALE	FEMALE	MALE	FEMALE	MALE	FEMALE	MALE	FEMALE	MALE	FEMALE	Total	Percentage		
ATLANTIC	14	5.32%	0	0.00%	4	6.67%	0	0.00%	15	10.20%	1	12.50%	34	6.83%
BERGEN	9	3.42%	0	0.00%	2	3.33%	0	0.00%	1	0.68%	0	0.00%	12	2.41%
BURLINGTON	9	3.42%	1	7.14%	0	0.00%	0	0.00%	7	4.76%	0	0.00%	17	3.41%
CAMDEN	55	20.91%	7	50.00%	18	30.00%	4	66.67%	23	15.65%	2	25.00%	109	21.89%
CAPE MAY	1	0.38%	0	0.00%	1	1.67%	0	0.00%	2	1.36%	0	0.00%	4	0.80%
CUMBERLAND	9	3.42%	0	0.00%	4	6.67%	0	0.00%	4	2.72%	1	12.50%	18	3.61%
ESSEX	44	16.73%	2	14.29%	3	5.00%	0	0.00%	17	11.56%	0	0.00%	66	13.25%
GLOUCESTER	1	0.38%	0	0.00%	0	0.00%	0	0.00%	1	0.68%	0	0.00%	2	0.40%
HUDSON	11	4.18%	0	0.00%	6	10.00%	0	0.00%	7	4.76%	0	0.00%	24	4.82%
MERCER	27	10.27%	2	14.29%	3	5.00%	0	0.00%	13	8.84%	0	0.00%	45	9.04%
MIDDLESEX	28	10.65%	0	0.00%	6	10.00%	0	0.00%	12	8.16%	1	12.50%	47	9.44%
MONMOUTH	7	2.66%	0	0.00%	1	1.67%	0	0.00%	2	1.36%	0	0.00%	10	2.01%
MORRIS	3	1.14%	0	0.00%	0	0.00%	0	0.00%	3	2.04%	0	0.00%	6	1.20%
OCEAN	10	3.80%	0	0.00%	5	8.33%	2	33.33%	6	4.08%	0	0.00%	23	4.62%
PASSAIC	18	6.84%	0	0.00%	2	3.33%	0	0.00%	12	8.16%	1	12.50%	33	6.63%
SALEM	1	0.38%	0	0.00%	2	3.33%	0	0.00%	1	0.68%	0	0.00%	4	0.80%
SOMERSET	1	0.38%	0	0.00%	0	0.00%	0	0.00%	0	0.00%	0	0.00%	1	0.20%
SUSSEX	2	0.76%	1	7.14%	0	0.00%	0	0.00%	0	0.00%	0	0.00%	3	0.60%
UNION	12	4.56%	1	7.14%	3	5.00%	0	0.00%	14	9.52%	2	25.00%	32	6.43%
WARREN	1	0.38%	0	0.00%	0	0.00%	0	0.00%	0	0.00%	0	0.00%	1	0.20%
OUT OF STATE	0	0.00%	0	0.00%	0	0.00%	0	0.00%	7	4.76%	0	0.00%	7	1.41%
Total	263	100.00%	14	100.00%	60	100.00%	6	100.00%	147	100.00%	8	100.00%	498	100.00%

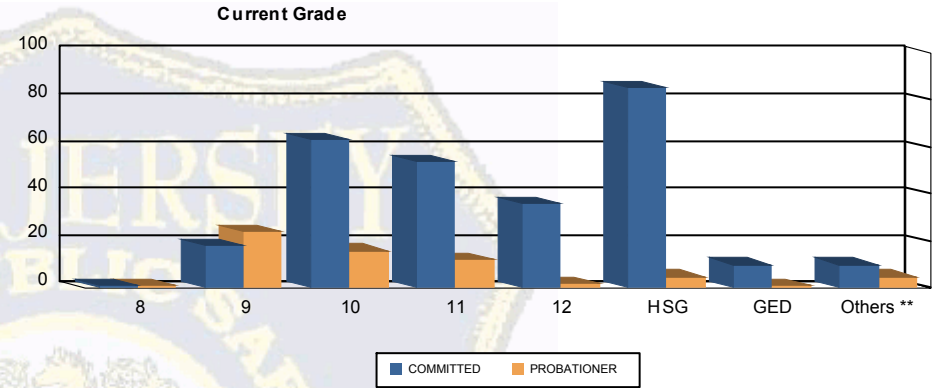
Count of Juveniles By Sentencing County





Juvenile Demographics and Statistics

Current Grade	COMMITTED		PROBATIONER		Total	
	MALE	FEMALE	MALE	FEMALE		
8	1 (0.38%)	0 0.00%	1 (1.67%)	0 0.00%	2 (0.58%)	
9	16 (6.08%)	2 (14.29%)	23 (38.33%)	1 (16.67%)	42 (12.24%)	
10	58 (22.05%)	5 (35.71%)	15 (25.00%)	1 (16.67%)	79 (23.03%)	
11	52 (19.77%)	2 (14.29%)	12 (20.00%)	0 0.00%	66 (19.24%)	
12	33 (12.55%)	3 (21.43%)	2 (3.33%)	0 0.00%	38 (11.08%)	
HSG	83 (31.56%)	2 (14.29%)	3 (5.00%)	2 (33.33%)	90 (26.24%)	
GED	10 (3.80%)	0 0.00%	0 0.00%	1 (16.67%)	11 (3.21%)	
Others **	10 (3.80%)	0 0.00%	4 (6.67%)	1 (16.67%)	15 (4.37%)	
Total	263 (100.00%)	14 (100.00%)	60 (100.00%)	6 (100.00%)	343 (100.00%)	

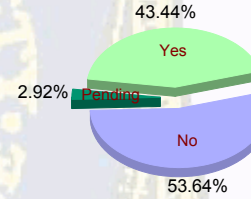


** Includes Aged Out Juveniles and Pending Records

Special Education Services

Yes	113 (42.97%)	6 (42.86%)	28 (46.67%)	2 (33.33%)	149 (43.44%)
No	144 (54.75%)	8 (57.14%)	29 (48.33%)	3 (50.00%)	184 (53.64%)
Pending	6 (2.28%)	0 0.00%	3 (5.00%)	1 (16.67%)	10 (2.92%)
Total	263 (100.00%)	14 (100.00%)	60 (100.00%)	6 (100.00%)	343 (100.00%)

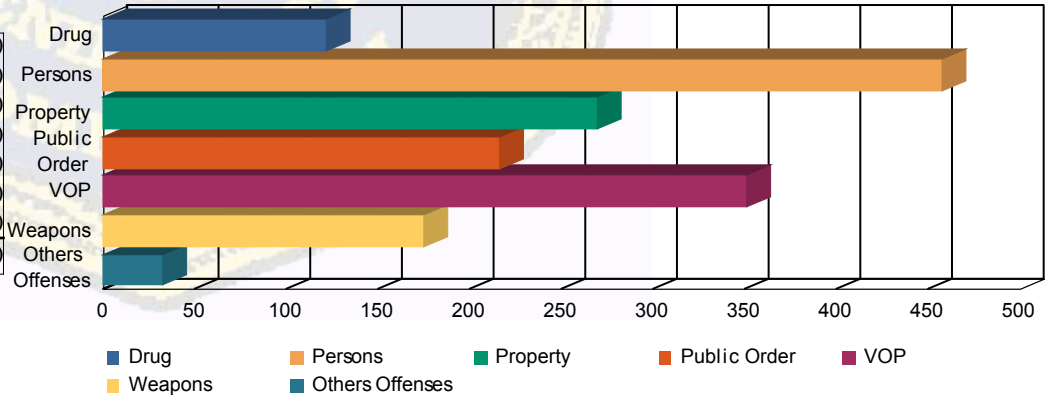
Special Education



Offense Categories

Drug	90 (6.82%)	5 (7.25%)	22 (10.53%)	4 (16.67%)	121 (7.46%)
Persons	389 (29.49%)	16 (23.19%)	48 (22.97%)	4 (16.67%)	457 (28.19%)
Property	231 (17.51%)	10 (14.49%)	27 (12.92%)	1 (4.17%)	269 (16.59%)
Public Order	171 (12.96%)	13 (18.84%)	26 (12.44%)	6 (25.00%)	216 (13.33%)
VOP	271 (20.55%)	16 (23.19%)	56 (26.79%)	8 (33.33%)	351 (21.65%)
Weapons	146 (11.07%)	8 (11.59%)	20 (9.57%)	1 (4.17%)	175 (10.80%)
Others Offenses	21 (1.59%)	1 (1.45%)	10 (4.78%)	0 0.00%	32 (1.97%)
Total *	1,319 (100.00%)	69 (100.00%)	209 (100.00%)	24 (100.00%)	1,621 (100.00%)

Offense Categories



* Juveniles may have multiple offenses