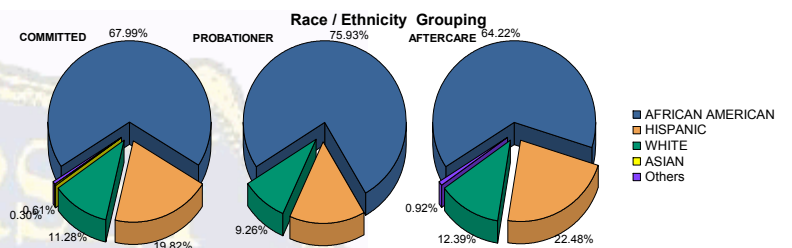


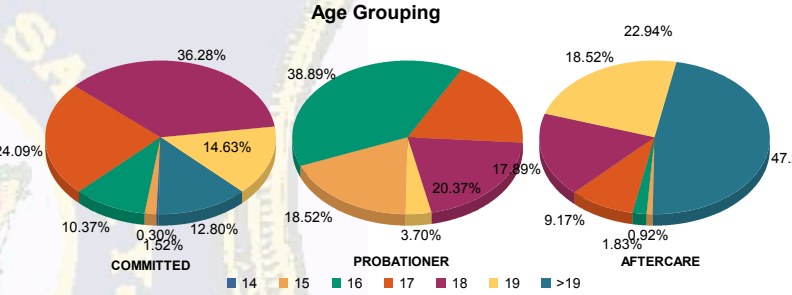


Juvenile Demographics and Statistics

Race/Ethnicity	COMMITTED		PROBATIONER		AFTERCARE		Total							
	MALE	FEMALE	MALE	FEMALE	MALE	FEMALE								
AFRICAN AMERICAN	215	68.47%	8	57.14%	41	77.36%	0	0.00%	128	63.05%	12	80.00%	140	67.33%
HISPANIC	63	20.06%	2	14.29%	8	15.09%	0	0.00%	47	23.15%	2	13.33%	49	20.33%
WHITE	33	10.51%	4	28.57%	4	7.55%	1	100.00%	26	12.81%	1	6.67%	27	11.50%
ASIAN	1	0.32%	0	0.00%	0	0.00%	0	0.00%	0	0.00%	0	0.00%	0	0.17%
Others	2	0.64%	0	0.00%	0	0.00%	0	0.00%	2	0.99%	0	0.00%	2	0.67%
Total	314	100.00%	14	100.00%	53	100.00%	1	100.00%	203	100.00%	15	100.00%	600	100.00%



Age	MALE	FEMALE	MALE	FEMALE	MALE	FEMALE	MALE	FEMALE	Total
14	1	0.32%	0	0.00%	0	0.00%	0	0.00%	1
15	3	0.96%	2	14.29%	10	18.87%	0	0.00%	17
16	32	10.19%	2	14.29%	21	39.62%	0	0.00%	59
17	74	23.57%	5	35.71%	10	18.87%	0	0.00%	109
18	115	36.62%	4	28.57%	10	18.87%	1	100.00%	169
19	48	15.29%	0	0.00%	2	3.77%	0	0.00%	100
>19	41	13.06%	1	7.14%	0	0.00%	0	0.00%	145
Total	314	100.00%	14	100.00%	53	100.00%	1	100.00%	600

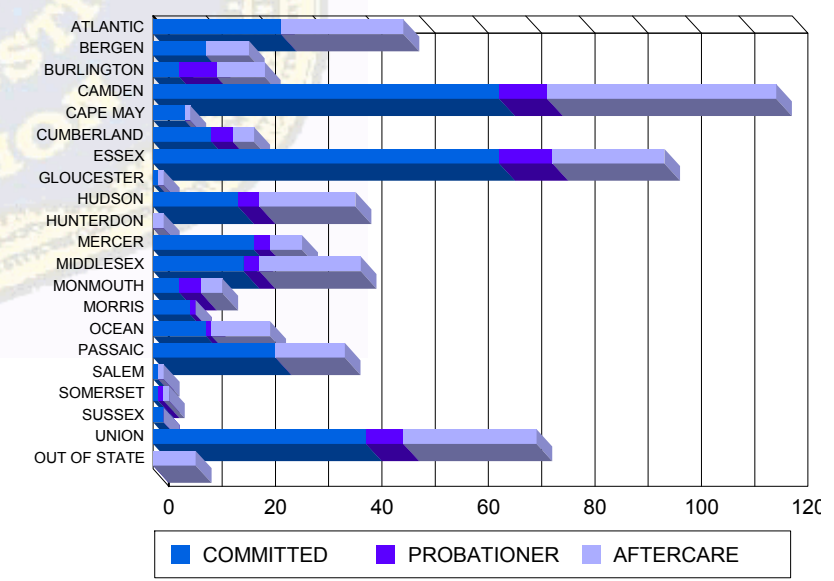


Average Age	COMMITTED	PROBATIONER	AFTERCARE	Total
Average Age	18.02	17.07	16.49	18.49

Sentencing County

Sentencing County	MALE	FEMALE	MALE	FEMALE	MALE	FEMALE	MALE	FEMALE	Total
ATLANTIC	24	7.64%	0	0.00%	0	0.00%	21	10.34%	47
BERGEN	9	2.87%	1	7.14%	0	0.00%	7	3.45%	18
BURLINGTON	5	1.59%	0	0.00%	7	13.21%	0	0.00%	21
CAMDEN	62	19.75%	3	21.43%	8	15.09%	1	100.00%	117
CAPE MAY	6	1.91%	0	0.00%	0	0.00%	1	0.49%	7
CUMBERLAND	11	3.50%	0	0.00%	4	7.55%	0	0.00%	19
ESSEX	61	19.43%	4	28.57%	10	18.87%	0	0.00%	96
GLOUCESTER	1	0.32%	0	0.00%	0	0.00%	1	0.49%	2
HUDSON	15	4.78%	1	7.14%	4	7.55%	0	0.00%	38
HUNTERDON	0	0.00%	0	0.00%	0	0.00%	2	0.99%	2
MERCER	17	5.41%	2	14.29%	3	5.66%	0	0.00%	28
MIDDLESEX	17	5.41%	0	0.00%	3	5.66%	0	0.00%	39
MONMOUTH	5	1.59%	0	0.00%	4	7.55%	0	0.00%	13
MORRIS	7	2.23%	0	0.00%	1	1.89%	0	0.00%	8
OCEAN	9	2.87%	1	7.14%	1	1.89%	0	0.00%	22
PASSAIC	22	7.01%	1	7.14%	0	0.00%	13	6.40%	36
SALEM	1	0.32%	0	0.00%	0	0.00%	1	0.49%	2
SOMERSET	1	0.32%	0	0.00%	1	1.89%	0	0.00%	3
SUSSEX	2	0.64%	0	0.00%	0	0.00%	0	0.00%	2
UNION	39	12.42%	1	7.14%	7	13.21%	0	0.00%	72
OUT OF STATE	0	0.00%	0	0.00%	0	0.00%	6	2.96%	8
Total	314	100.00%	14	100.00%	53	100.00%	1	100.00%	600

Count of Juveniles By Sentencing County





Juvenile Demographics and Statistics

Current Grade	COMMITTED		PROBATIONER		Total	
	MALE	FEMALE	MALE	FEMALE		
7	1 (0.32%)	0 0.00%	0 0.00%	0 0.00%	1 (0.26%)	
8	1 (0.32%)	0 0.00%	1 (1.89%)	0 0.00%	2 (0.52%)	
9	36 (11.46%)	3 (21.43%)	18 (33.96%)	0 0.00%	57 (14.92%)	
10	59 (18.79%)	4 (28.57%)	14 (26.42%)	0 0.00%	77 (20.16%)	
11	67 (21.34%)	3 (21.43%)	11 (20.75%)	0 0.00%	81 (21.20%)	
12	62 (19.75%)	1 (7.14%)	3 (5.66%)	0 0.00%	66 (17.28%)	
HSG	60 (19.11%)	2 (14.29%)	2 (3.77%)	1 (100.00%)	65 (17.02%)	
GED	24 (7.64%)	1 (7.14%)	3 (5.66%)	0 0.00%	28 (7.33%)	
Others **	4 (1.27%)	0 0.00%	1 (1.89%)	0 0.00%	5 (1.31%)	
Total	314 (100.00%)	14 (100.00%)	53 (100.00%)	1 (100.00%)	382 (100.00%)	

** Includes Aged Out Juveniles and Pending Records

Special Education Services

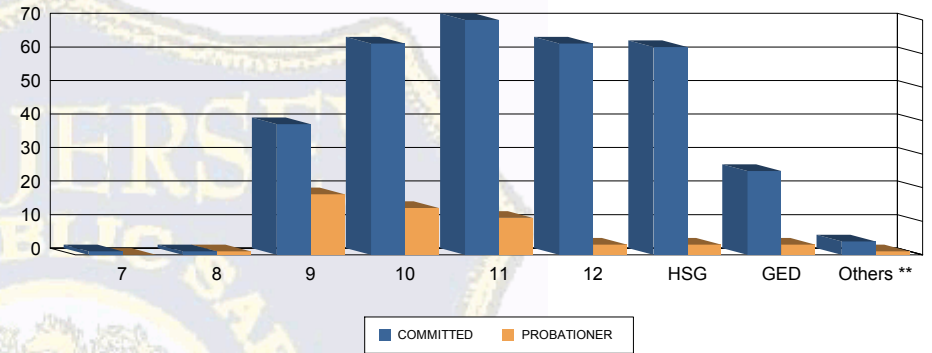
Yes	149 (47.45%)	9 (64.29%)	23 (43.40%)	0 0.00%	181 (47.38%)
No	164 (52.23%)	5 (35.71%)	29 (54.72%)	1 (100.00%)	199 (52.09%)
Pending	1 (0.32%)	0 0.00%	1 (1.89%)	0 0.00%	2 (0.52%)
Total	314 (100.00%)	14 (100.00%)	53 (100.00%)	1 (100.00%)	382 (100.00%)

Offense Categories

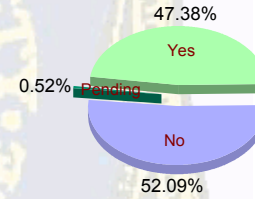
Drug	154 (8.78%)	2 (2.50%)	6 (5.61%)	0 0.00%	162 (8.34%)
Persons	488 (27.82%)	21 (26.25%)	31 (28.97%)	0 0.00%	540 (27.81%)
Property	325 (18.53%)	17 (21.25%)	15 (14.02%)	0 0.00%	357 (18.38%)
Public Order	219 (12.49%)	14 (17.50%)	11 (10.28%)	0 0.00%	244 (12.56%)
VOP	382 (21.78%)	19 (23.75%)	30 (28.04%)	1 (100.00%)	432 (22.25%)
Weapons	186 (10.60%)	7 (8.75%)	14 (13.08%)	0 0.00%	207 (10.66%)
Total *	1,754 (100.00%)	80 (100.00%)	107 (100.00%)	1 (100.00%)	1,942 (100.00%)

* Juveniles may have multiple offenses

Current Grade



Special Education



Offense Categories

