



Juvenile Demographics and Statistics

Race/ Ethnicity	COMMITTED		WAIVED		PROBATIONER		AFTERCARE		Total									
	MALE	FEMALE	MALE	FEMALE	MALE	FEMALE	MALE	FEMALE										
BLACK	151	72.25%	5	62.50%	27	65.85%	3	100.00%	29	64.44%	2	66.67%	98	64.05%	4	36.36%	319	67.44%
HISPANIC	38	18.18%	1	12.50%	10	24.39%	0	0.00%	10	22.22%	0	0.00%	32	20.92%	2	18.18%	93	19.66%
WHITE	18	8.61%	2	25.00%	4	9.76%	0	0.00%	5	11.11%	1	33.33%	21	13.73%	5	45.45%	56	11.84%
ASIAN	0	0.00%	0	0.00%	0	0.00%	0	0.00%	0	0.00%	0	0.00%	1	0.65%	0	0.00%	1	0.21%
Others	2	0.96%	0	0.00%	0	0.00%	0	0.00%	1	2.22%	0	0.00%	1	0.65%	0	0.00%	4	0.85%
Total	209	100.00%	8	100.00%	41	100.00%	3	100.00%	45	100.00%	3	100.00%	153	100.00%	11	100.00%	473	100.00%

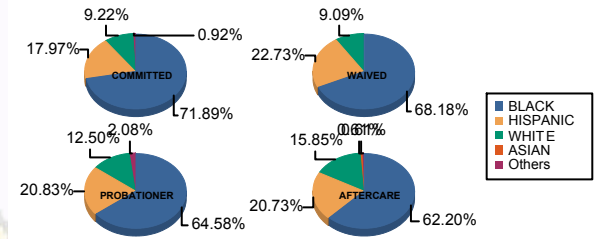
Age

13 and Below	1	0.48%	0	0.00%	0	0.00%	0	0.00%	0	0.00%	0	0.00%	0	0.00%	0	0.00%	1	0.21%
14	1	0.48%	0	0.00%	0	0.00%	0	0.00%	0	0.00%	0	0.00%	0	0.00%	0	0.00%	1	0.21%
15	4	1.91%	0	0.00%	0	0.00%	0	0.00%	4	8.89%	1	33.33%	1	0.65%	0	0.00%	10	2.11%
16	19	9.09%	2	25.00%	1	2.44%	0	0.00%	16	35.56%	2	66.67%	3	1.96%	1	9.09%	44	9.30%
17	38	18.18%	0	0.00%	4	9.76%	0	0.00%	12	26.67%	0	0.00%	7	4.58%	2	18.18%	63	13.32%
18	61	29.19%	1	12.50%	7	17.07%	1	33.33%	13	28.89%	0	0.00%	20	13.07%	1	9.09%	104	21.99%
19	39	18.66%	4	50.00%	18	43.90%	1	33.33%	0	0.00%	0	0.00%	39	25.49%	1	9.09%	102	21.56%
20 and Above	46	22.01%	1	12.50%	11	26.83%	1	33.33%	0	0.00%	0	0.00%	83	54.25%	6	54.55%	148	31.29%
Total	209	100.00%	8	100.00%	41	100.00%	3	100.00%	45	100.00%	3	100.00%	153	100.00%	11	100.00%	473	100.00%
Average Age	18.36		18.63		18.88		19.00		16.76		15.67		20.44		19.55		18.95	

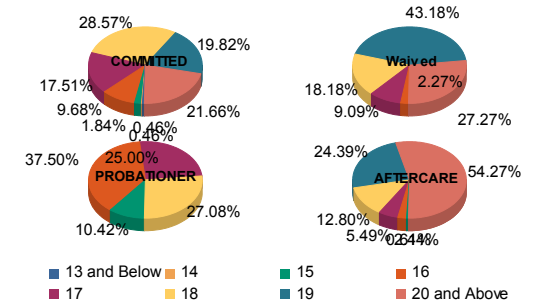
Sentencing County

ATL	8	3.83%	0	0.00%	5	12.20%	0	0.00%	0	0.00%	0	0.00%	6	3.92%	1	9.09%	20	4.23%
BER	7	3.35%	0	0.00%	0	0.00%	0	0.00%	1	2.22%	0	0.00%	3	1.96%	0	0.00%	11	2.33%
BUR	8	3.83%	2	25.00%	0	0.00%	0	0.00%	2	4.44%	0	0.00%	4	2.61%	0	0.00%	16	3.38%
CAM	42	20.10%	2	25.00%	6	14.63%	3	100.00%	11	24.44%	2	66.67%	26	16.99%	2	18.18%	94	19.87%
CAP	0	0.00%	0	0.00%	0	0.00%	0	0.00%	1	2.22%	0	0.00%	1	0.65%	0	0.00%	2	0.42%
CUM	8	3.83%	0	0.00%	0	0.00%	0	0.00%	2	4.44%	0	0.00%	7	4.58%	0	0.00%	17	3.59%
ESS	39	18.66%	0	0.00%	4	9.76%	0	0.00%	4	8.89%	0	0.00%	11	7.19%	1	9.09%	59	12.47%
GLO	0	0.00%	0	0.00%	0	0.00%	0	0.00%	0	0.00%	0	0.00%	1	0.65%	0	0.00%	1	0.21%
HUD	8	3.83%	0	0.00%	0	0.00%	0	0.00%	2	4.44%	0	0.00%	7	4.58%	0	0.00%	17	3.59%
MER	19	9.09%	0	0.00%	4	9.76%	0	0.00%	3	6.67%	1	33.33%	19	12.42%	3	27.27%	49	10.36%
MID	27	12.92%	3	37.50%	6	14.63%	0	0.00%	4	8.89%	0	0.00%	13	8.50%	1	9.09%	54	11.42%
MON	8	3.83%	0	0.00%	3	7.32%	0	0.00%	3	6.67%	0	0.00%	3	1.96%	0	0.00%	17	3.59%
MOR	2	0.96%	0	0.00%	0	0.00%	0	0.00%	0	0.00%	0	0.00%	1	0.65%	0	0.00%	3	0.63%
OCE	7	3.35%	0	0.00%	4	9.76%	0	0.00%	3	6.67%	0	0.00%	8	5.23%	0	0.00%	22	4.65%
PAS	17	8.13%	0	0.00%	9	21.95%	0	0.00%	6	13.33%	0	0.00%	19	12.42%	1	9.09%	52	10.99%
SAL	0	0.00%	0	0.00%	0	0.00%	0	0.00%	0	0.00%	0	0.00%	2	1.31%	0	0.00%	2	0.42%
SOM	1	0.48%	0	0.00%	0	0.00%	0	0.00%	0	0.00%	0	0.00%	1	0.65%	0	0.00%	2	0.42%
SUS	2	0.96%	0	0.00%	0	0.00%	0	0.00%	0	0.00%	0	0.00%	1	0.65%	1	9.09%	4	0.85%
UNI	6	2.87%	1	12.50%	0	0.00%	0	0.00%	3	6.67%	0	0.00%	14	9.15%	1	9.09%	25	5.29%
WAR	0	0.00%	0	0.00%	0	0.00%	0	0.00%	0	0.00%	0	0.00%	1	0.65%	0	0.00%	1	0.21%
OTHER	0	0.00%	0	0.00%	0	0.00%	0	0.00%	0	0.00%	0	0.00%	5	3.27%	0	0.00%	5	1.06%
Total	209	100.00%	8	100.00%	41	100.00%	3	100.00%	45	100.00%	3	100.00%	153	100.00%	11	100.00%	473	100.00%

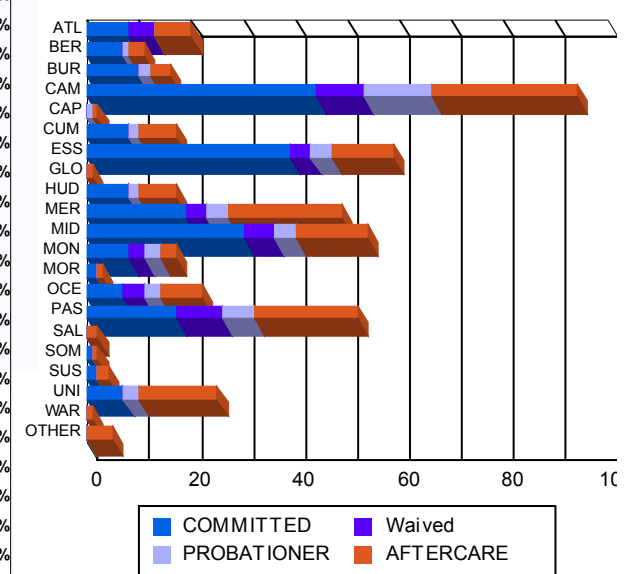
Race/Ethnicity Grouping



Age Grouping



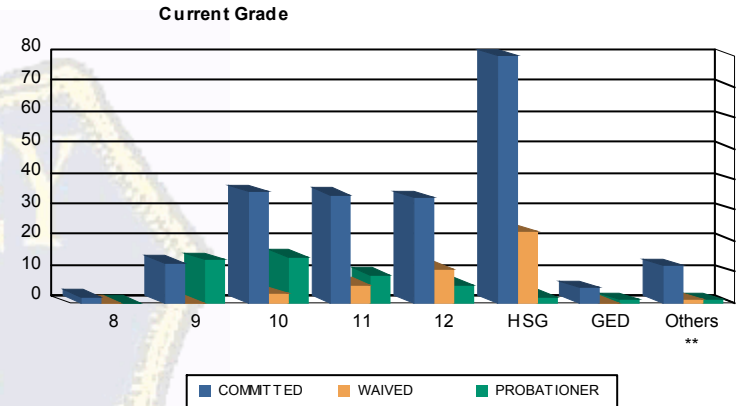
Count of Juveniles By Sentencing County





Juvenile Demographics and Statistics

Current Grade	COMMITTED		WAIVED		PROBATIONER		Total
	MALE	FEMALE	MALE	FEMALE	MALE	FEMALE	
8	(0.96%)	0.00%	0.00%	0.00%	0.00%	0.00%	2 (0.65%)
9	(5.74%)	(12.50%)	0.00%	0.00%	(26.67%)	(66.67%)	27 (8.74%)
10	(16.75%)	(12.50%)	(7.32%)	0.00%	(33.33%)	0.00%	54 (17.48%)
11	(15.31%)	(37.50%)	(14.63%)	0.00%	(17.78%)	(33.33%)	50 (16.18%)
12	(15.79%)	(12.50%)	(24.39%)	(33.33%)	(13.33%)	0.00%	51 (16.50%)
HSG	(37.80%)	(12.50%)	(51.22%)	(66.67%)	(4.44%)	0.00%	105 (33.98%)
GED	(2.39%)	0.00%	0.00%	0.00%	(2.22%)	0.00%	6 (1.94%)
Others **	(5.26%)	(12.50%)	(2.44%)	0.00%	(2.22%)	0.00%	14 (4.53%)
Total	209 (100.00%)	8 (100.00%)	41 (100.00%)	3 (100.00%)	45 (100.00%)	3 (100.00%)	309 (100.00%)

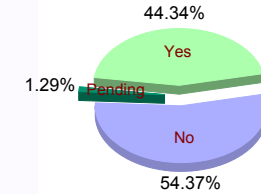


** Includes Aged Out Juveniles and Pending Records

Special Education Services

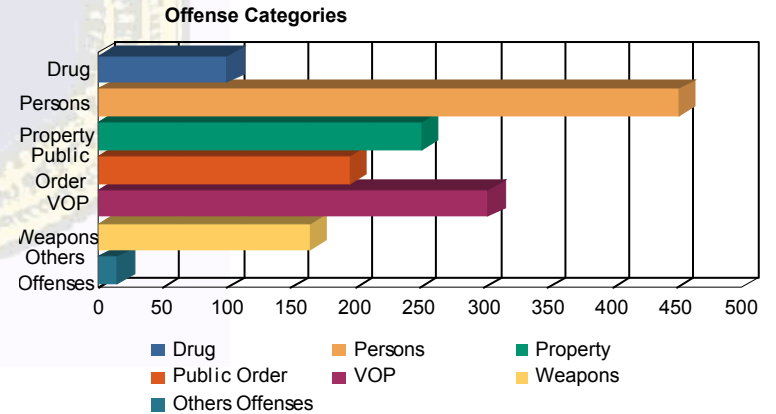
Yes	93 (44.50%)	3 (37.50%)	13 (31.71%)	2 (66.67%)	26 (57.78%)	0 (0.00%)	137 (44.34%)
No	113 (54.07%)	5 (62.50%)	28 (68.29%)	1 (33.33%)	18 (40.00%)	3 (100.00%)	168 (54.37%)
Pending	3 (1.44%)	0 (0.00%)	0 (0.00%)	0 (0.00%)	1 (2.22%)	0 (0.00%)	4 (1.29%)
Total	209 (100.00%)	8 (100.00%)	41 (100.00%)	3 (100.00%)	45 (100.00%)	3 (100.00%)	309 (100.00%)

Special Education



Offense Categories

Drug	76 (6.18%)	6 (10.71%)	6 (8.22%)	1 (7.14%)	11 (10.78%)	0 (0.00%)	100 (6.75%)
Persons	371 (30.19%)	15 (26.79%)	35 (47.95%)	5 (35.71%)	23 (22.55%)	2 (28.57%)	451 (30.45%)
Property	216 (17.58%)	8 (14.29%)	4 (5.48%)	2 (14.29%)	19 (18.63%)	2 (28.57%)	251 (16.95%)
Public Order	165 (13.43%)	10 (17.86%)	6 (8.22%)	2 (14.29%)	12 (11.76%)	1 (14.29%)	196 (13.23%)
VOP	255 (20.75%)	11 (19.64%)	4 (5.48%)	2 (14.29%)	29 (28.43%)	2 (28.57%)	303 (20.46%)
Weapons	133 (10.82%)	5 (8.93%)	18 (24.66%)	1 (7.14%)	8 (7.84%)	0 (0.00%)	165 (11.14%)
Others Offenses	13 (1.06%)	1 (1.79%)	0 (0.00%)	1 (7.14%)	0 (0.00%)	0 (0.00%)	15 (1.01%)
Total *	1,229 (100.00%)	56 (100.00%)	73 (100.00%)	14 (100.00%)	102 (100.00%)	7 (100.00%)	1,481 (100.00%)



* Juveniles may have multiple offenses