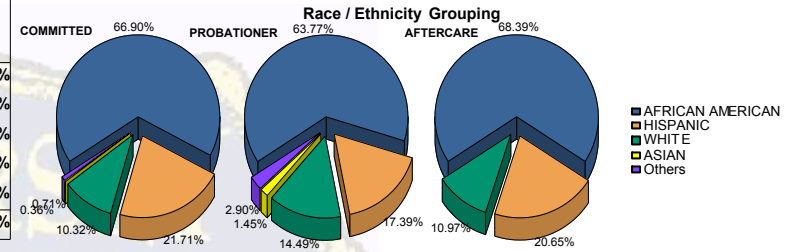


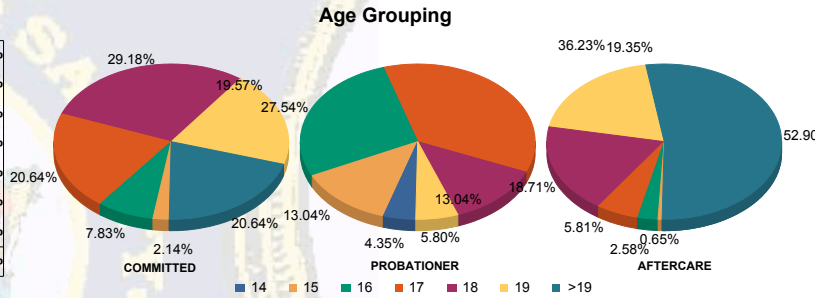


Juvenile Demographics and Statistics

Race/Ethnicity	COMMITTED		PROBATIONER		AFTERCARE		Total							
	MALE	FEMALE	MALE	FEMALE	MALE	FEMALE	MALE	FEMALE						
AFRICAN AMERICAN	181	68.30%	7	43.75%	42	66.67%	2	33.33%	102	69.39%	4	50.00%	338	66.93%
HISPANIC	58	21.89%	3	18.75%	11	17.46%	1	16.67%	30	20.41%	2	25.00%	105	20.79%
WHITE	23	8.68%	6	37.50%	7	11.11%	3	50.00%	15	10.20%	2	25.00%	56	11.09%
ASIAN	1	0.38%	0	0.00%	1	1.59%	0	0.00%	0	0.00%	0	0.00%	2	0.40%
Others	2	0.75%	0	0.00%	2	3.17%	0	0.00%	0	0.00%	0	0.00%	4	0.79%
Total	265	100.00%	16	100.00%	63	100.00%	6	100.00%	147	100.00%	8	100.00%	505	100.00%



Age	COMMITTED	PROBATIONER	AFTERCARE	Total										
14	0	0.00%	0	0.00%	2	3.17%	1	16.67%	0	0.00%	0	0.00%	3	0.59%
15	5	1.89%	1	6.25%	9	14.29%	0	0.00%	1	0.68%	0	0.00%	16	3.17%
16	21	7.92%	1	6.25%	18	28.57%	1	16.67%	4	2.72%	0	0.00%	45	8.91%
17	54	20.38%	4	25.00%	24	38.10%	1	16.67%	9	6.12%	0	0.00%	92	18.22%
18	78	29.43%	4	25.00%	8	12.70%	1	16.67%	27	18.37%	2	25.00%	120	23.76%
19	50	18.87%	5	31.25%	2	3.17%	2	33.33%	30	20.41%	0	0.00%	89	17.62%
>19	57	21.51%	1	6.25%	0	0.00%	0	0.00%	76	51.70%	6	75.00%	140	27.72%
Total	265	100.00%	16	100.00%	63	100.00%	6	100.00%	147	100.00%	8	100.00%	505	100.00%

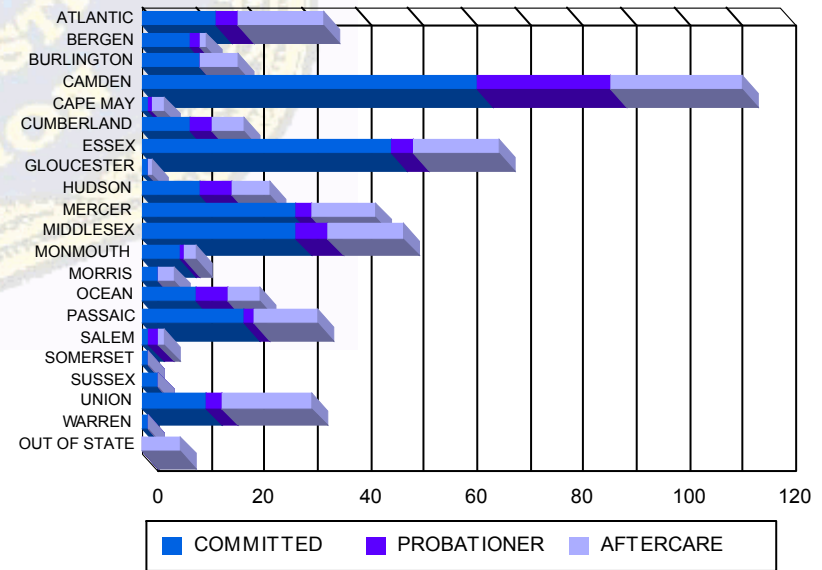


Average Age	COMMITTED	PROBATIONER	AFTERCARE	Total			
Average Age	18.37	18.00	16.52	17.17	20.22	20.88	18.69

Sentencing County

Sentencing County	COMMITTED	PROBATIONER	AFTERCARE	Total										
ATLANTIC	14	5.28%	0	0.00%	4	6.35%	0	0.00%	15	10.20%	1	12.50%	34	6.73%
BERGEN	9	3.40%	0	0.00%	2	3.17%	0	0.00%	1	0.68%	0	0.00%	12	2.38%
BURLINGTON	9	3.40%	2	12.50%	0	0.00%	0	0.00%	7	4.76%	0	0.00%	18	3.56%
CAMDEN	56	21.13%	7	43.75%	21	33.33%	4	66.67%	23	15.65%	2	25.00%	113	22.38%
CAPE MAY	1	0.38%	0	0.00%	1	1.59%	0	0.00%	2	1.36%	0	0.00%	4	0.79%
CUMBERLAND	9	3.40%	0	0.00%	4	6.35%	0	0.00%	5	3.40%	1	12.50%	19	3.76%
ESSEX	45	16.98%	2	12.50%	4	6.35%	0	0.00%	16	10.88%	0	0.00%	67	13.27%
GLOUCESTER	1	0.38%	0	0.00%	0	0.00%	0	0.00%	1	0.68%	0	0.00%	2	0.40%
HUDSON	11	4.15%	0	0.00%	6	9.52%	0	0.00%	7	4.76%	0	0.00%	24	4.75%
MERCER	27	10.19%	2	12.50%	3	4.76%	0	0.00%	12	8.16%	0	0.00%	44	8.71%
MIDDLESEX	28	10.57%	1	6.25%	6	9.52%	0	0.00%	13	8.84%	1	12.50%	49	9.70%
MONMOUTH	7	2.64%	0	0.00%	1	1.59%	0	0.00%	2	1.36%	0	0.00%	10	1.98%
MORRIS	3	1.13%	0	0.00%	0	0.00%	0	0.00%	3	2.04%	0	0.00%	6	1.19%
OCEAN	10	3.77%	0	0.00%	4	6.35%	2	33.33%	6	4.08%	0	0.00%	22	4.36%
PASSAIC	19	7.17%	0	0.00%	2	3.17%	0	0.00%	11	7.48%	1	12.50%	33	6.53%
SALEM	1	0.38%	0	0.00%	2	3.17%	0	0.00%	1	0.68%	0	0.00%	4	0.79%
SOMERSET	1	0.38%	0	0.00%	0	0.00%	0	0.00%	0	0.00%	0	0.00%	1	0.20%
SUSSEX	2	0.75%	1	6.25%	0	0.00%	0	0.00%	0	0.00%	0	0.00%	3	0.59%
UNION	11	4.15%	1	6.25%	3	4.76%	0	0.00%	15	10.20%	2	25.00%	32	6.34%
WARREN	1	0.38%	0	0.00%	0	0.00%	0	0.00%	0	0.00%	0	0.00%	1	0.20%
OUT OF STATE	0	0.00%	0	0.00%	0	0.00%	0	0.00%	7	4.76%	0	0.00%	7	1.39%
Total	265	100.00%	16	100.00%	63	100.00%	6	100.00%	147	100.00%	8	100.00%	505	100.00%

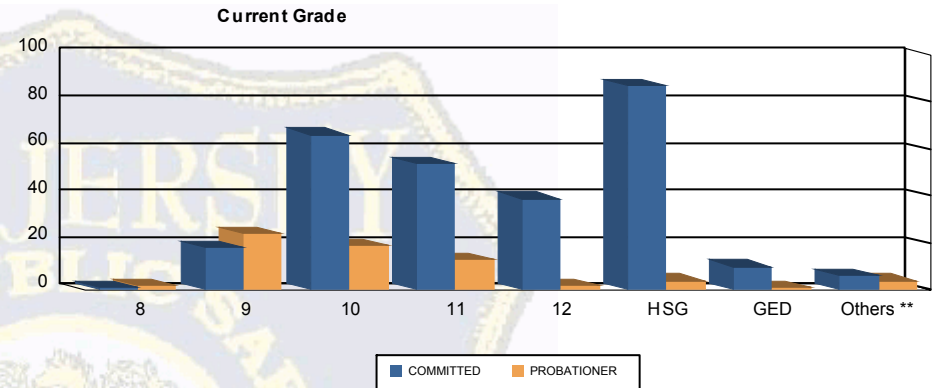
Count of Juveniles By Sentencing County





Juvenile Demographics and Statistics

Current Grade	COMMITTED		PROBATIONER		Total	
	MALE	FEMALE	MALE	FEMALE		
8	1 (0.38%)	0 0.00%	2 (3.17%)	0 0.00%	3 (0.86%)	
9	16 (6.04%)	2 (12.50%)	23 (36.51%)	1 (16.67%)	42 (12.00%)	
10	61 (23.02%)	5 (31.25%)	17 (26.98%)	2 (33.33%)	85 (24.29%)	
11	52 (19.62%)	2 (12.50%)	13 (20.63%)	0 0.00%	67 (19.14%)	
12	36 (13.58%)	3 (18.75%)	2 (3.17%)	0 0.00%	41 (11.71%)	
HSG	84 (31.70%)	3 (18.75%)	2 (3.17%)	2 (33.33%)	91 (26.00%)	
GED	10 (3.77%)	0 0.00%	0 0.00%	1 (16.67%)	11 (3.14%)	
Others **	5 (1.89%)	1 (6.25%)	4 (6.35%)	0 0.00%	10 (2.86%)	
Total	265 (100.00%)	16 (100.00%)	63 (100.00%)	6 (100.00%)	350 (100.00%)	

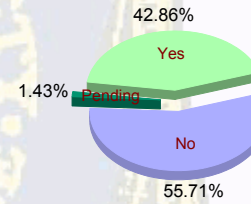


** Includes Aged Out Juveniles and Pending Records

Special Education Services

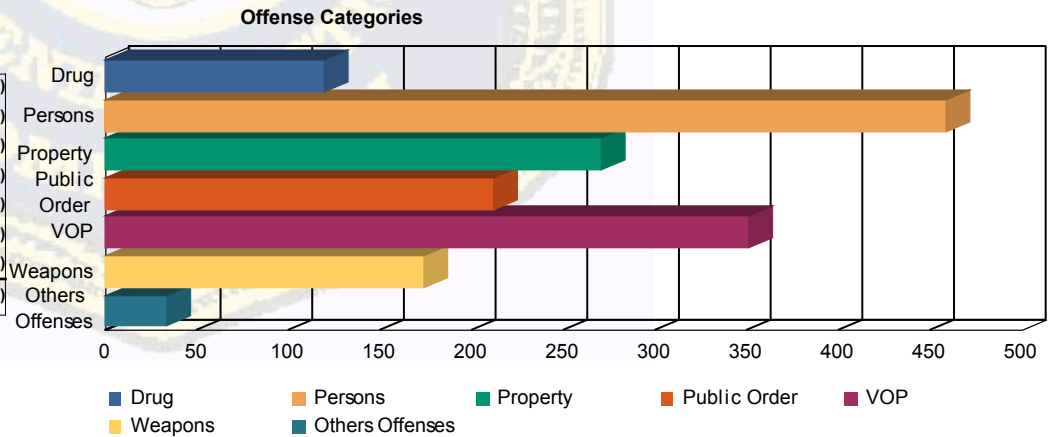
Yes	115 (43.40%)	6 (37.50%)	27 (42.86%)	2 (33.33%)	150 (42.86%)
No	149 (56.23%)	9 (56.25%)	33 (52.38%)	4 (66.67%)	195 (55.71%)
Pending	1 (0.38%)	1 (6.25%)	3 (4.76%)	0 0.00%	5 (1.43%)
Total	265 (100.00%)	16 (100.00%)	63 (100.00%)	6 (100.00%)	350 (100.00%)

Special Education



Offense Categories

Drug	89 (6.73%)	6 (8.00%)	21 (10.61%)	3 (14.29%)	119 (7.36%)
Persons	392 (29.63%)	17 (22.67%)	45 (22.73%)	4 (19.05%)	458 (28.32%)
Property	232 (17.54%)	11 (14.67%)	26 (13.13%)	1 (4.76%)	270 (16.70%)
Public Order	170 (12.85%)	14 (18.67%)	23 (11.62%)	5 (23.81%)	212 (13.11%)
VOP	272 (20.56%)	17 (22.67%)	54 (27.27%)	8 (38.10%)	351 (21.71%)
Weapons	146 (11.04%)	8 (10.67%)	20 (10.10%)	0 0.00%	174 (10.76%)
Others Offenses	22 (1.66%)	2 (2.67%)	9 (4.55%)	0 0.00%	33 (2.04%)
Total *	1,323 (100.00%)	75 (100.00%)	198 (100.00%)	21 (100.00%)	1,617 (100.00%)



* Juveniles may have multiple offenses