



Juvenile Demographics and Statistics

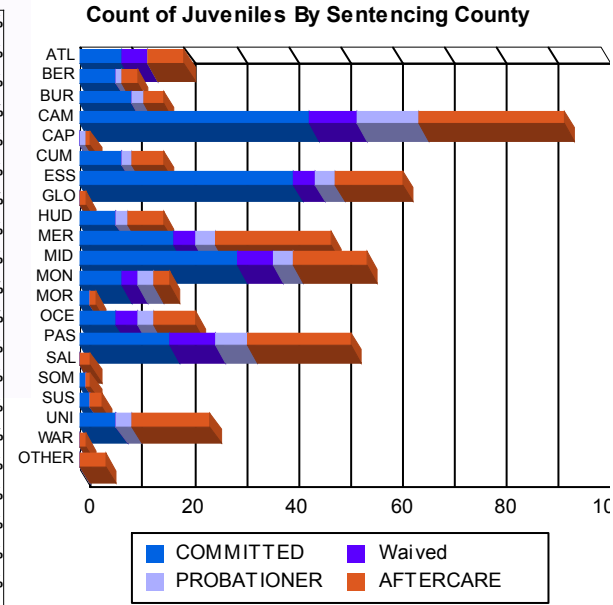
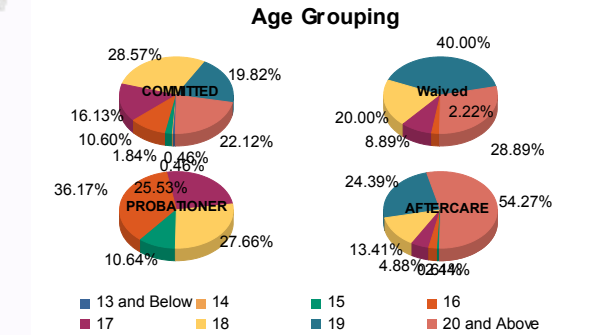
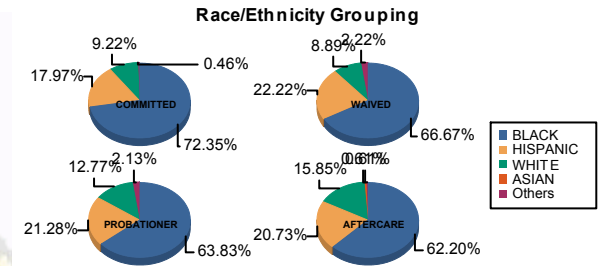
Race/ Ethnicity	COMMITTED		WAIVED		PROBATIONER		AFTERCARE		Total									
	MALE	FEMALE	MALE	FEMALE	MALE	FEMALE	MALE	FEMALE										
BLACK	152	72.73%	5	62.50%	27	64.29%	3	100.00%	28	63.64%	2	66.67%	98	64.05%	4	36.36%	319	67.44%
HISPANIC	38	18.18%	1	12.50%	10	23.81%	0	0.00%	10	22.73%	0	0.00%	32	20.92%	2	18.18%	93	19.66%
WHITE	18	8.61%	2	25.00%	4	9.52%	0	0.00%	5	11.36%	1	33.33%	21	13.73%	5	45.45%	56	11.84%
ASIAN	0	0.00%	0	0.00%	0	0.00%	0	0.00%	0	0.00%	0	0.00%	1	0.65%	0	0.00%	1	0.21%
Others	1	0.48%	0	0.00%	1	2.38%	0	0.00%	1	2.27%	0	0.00%	1	0.65%	0	0.00%	4	0.85%
Total	209	100.00%	8	100.00%	42	100.00%	3	100.00%	44	100.00%	3	100.00%	153	100.00%	11	100.00%	473	100.00%

Age

13 and Below	1	0.48%	0	0.00%	0	0.00%	0	0.00%	0	0.00%	0	0.00%	0	0.00%	0	0.00%	1	0.21%
14	1	0.48%	0	0.00%	0	0.00%	0	0.00%	0	0.00%	0	0.00%	0	0.00%	0	0.00%	1	0.21%
15	4	1.91%	0	0.00%	0	0.00%	0	0.00%	4	9.09%	1	33.33%	1	0.65%	0	0.00%	10	2.11%
16	21	10.05%	2	25.00%	1	2.38%	0	0.00%	15	34.09%	2	66.67%	3	1.96%	1	9.09%	45	9.51%
17	35	16.75%	0	0.00%	4	9.52%	0	0.00%	12	27.27%	0	0.00%	7	4.58%	1	9.09%	59	12.47%
18	61	29.19%	1	12.50%	8	19.05%	1	33.33%	13	29.55%	0	0.00%	20	13.07%	2	18.18%	106	22.41%
19	39	18.66%	4	50.00%	18	42.86%	0	0.00%	0	0.00%	0	0.00%	39	25.49%	1	9.09%	101	21.35%
20 and Above	47	22.49%	1	12.50%	11	26.19%	2	66.67%	0	0.00%	0	0.00%	83	54.25%	6	54.55%	150	31.71%
Total	209	100.00%	8	100.00%	42	100.00%	3	100.00%	44	100.00%	3	100.00%	153	100.00%	11	100.00%	473	100.00%
Average Age	18.37		18.63		18.86		19.33		16.77		15.67		20.45		19.64		18.96	

Sentencing County

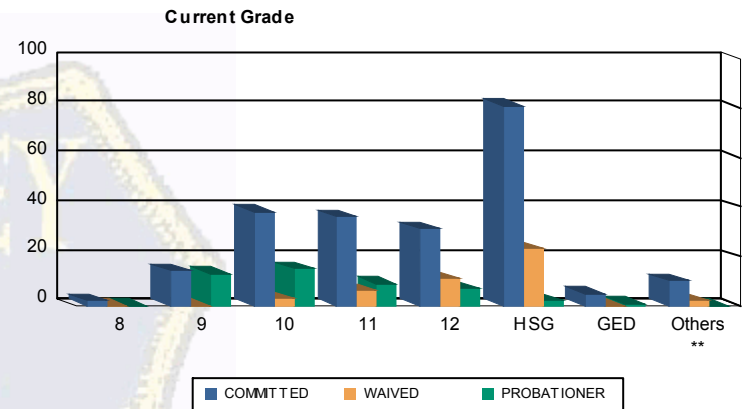
ATL	8	3.83%	0	0.00%	5	11.90%	0	0.00%	0	0.00%	0	0.00%	6	3.92%	1	9.09%	20	4.23%
BER	7	3.35%	0	0.00%	0	0.00%	0	0.00%	1	2.27%	0	0.00%	3	1.96%	0	0.00%	11	2.33%
BUR	8	3.83%	2	25.00%	0	0.00%	0	0.00%	2	4.55%	0	0.00%	4	2.61%	0	0.00%	16	3.38%
CAM	42	20.10%	2	25.00%	6	14.29%	3	100.00%	10	22.73%	2	66.67%	26	16.99%	2	18.18%	93	19.66%
CAP	0	0.00%	0	0.00%	0	0.00%	0	0.00%	1	2.27%	0	0.00%	1	0.65%	0	0.00%	2	0.42%
CUM	8	3.83%	0	0.00%	0	0.00%	0	0.00%	2	4.55%	0	0.00%	6	3.92%	0	0.00%	16	3.38%
ESS	41	19.62%	0	0.00%	4	9.52%	0	0.00%	4	9.09%	0	0.00%	12	7.84%	1	9.09%	62	13.11%
GLO	0	0.00%	0	0.00%	0	0.00%	0	0.00%	0	0.00%	0	0.00%	1	0.65%	0	0.00%	1	0.21%
HUD	7	3.35%	0	0.00%	0	0.00%	0	0.00%	2	4.55%	0	0.00%	7	4.58%	0	0.00%	16	3.38%
MER	18	8.61%	0	0.00%	4	9.52%	0	0.00%	3	6.82%	1	33.33%	19	12.42%	3	27.27%	48	10.15%
MID	27	12.92%	3	37.50%	7	16.67%	0	0.00%	4	9.09%	0	0.00%	13	8.50%	1	9.09%	55	11.63%
MON	8	3.83%	0	0.00%	3	7.14%	0	0.00%	3	6.82%	0	0.00%	3	1.96%	0	0.00%	17	3.59%
MOR	2	0.96%	0	0.00%	0	0.00%	0	0.00%	0	0.00%	0	0.00%	1	0.65%	0	0.00%	3	0.63%
OCE	7	3.35%	0	0.00%	4	9.52%	0	0.00%	3	6.82%	0	0.00%	8	5.23%	0	0.00%	22	4.65%
PAS	17	8.13%	0	0.00%	9	21.43%	0	0.00%	6	13.64%	0	0.00%	19	12.42%	1	9.09%	52	10.99%
SAL	0	0.00%	0	0.00%	0	0.00%	0	0.00%	0	0.00%	0	0.00%	2	1.31%	0	0.00%	2	0.42%
SOM	1	0.48%	0	0.00%	0	0.00%	0	0.00%	0	0.00%	0	0.00%	1	0.65%	0	0.00%	2	0.42%
SUS	2	0.96%	0	0.00%	0	0.00%	0	0.00%	0	0.00%	0	0.00%	1	0.65%	1	9.09%	4	0.85%
UNI	6	2.87%	1	12.50%	0	0.00%	0	0.00%	3	6.82%	0	0.00%	14	9.15%	1	9.09%	25	5.29%
WAR	0	0.00%	0	0.00%	0	0.00%	0	0.00%	0	0.00%	0	0.00%	1	0.65%	0	0.00%	1	0.21%
OTHER	0	0.00%	0	0.00%	0	0.00%	0	0.00%	0	0.00%	0	0.00%	5	3.27%	0	0.00%	5	1.06%
Total	209	100.00%	8	100.00%	42	100.00%	3	100.00%	44	100.00%	3	100.00%	153	100.00%	11	100.00%	473	100.00%





Juvenile Demographics and Statistics

Current Grade	COMMITTED		WAIVED		PROBATIONER		Total
	MALE	FEMALE	MALE	FEMALE	MALE	FEMALE	
8	2 (0.96%)	0 (0.00%)	0 (0.00%)	0 (0.00%)	0 (0.00%)	0 (0.00%)	2 (0.65%)
9	13 (6.22%)	1 (12.50%)	0 (0.00%)	0 (0.00%)	11 (25.00%)	2 (66.67%)	27 (8.74%)
10	37 (17.70%)	1 (12.50%)	3 (7.14%)	0 (0.00%)	15 (34.09%)	0 (0.00%)	56 (18.12%)
11	33 (15.79%)	3 (37.50%)	6 (14.29%)	0 (0.00%)	8 (18.18%)	1 (33.33%)	51 (16.50%)
12	30 (14.35%)	1 (12.50%)	10 (23.81%)	1 (33.33%)	7 (15.91%)	0 (0.00%)	49 (15.86%)
HSG	80 (38.28%)	1 (12.50%)	21 (50.00%)	2 (66.67%)	2 (4.55%)	0 (0.00%)	106 (34.30%)
GED	5 (2.39%)	0 (0.00%)	0 (0.00%)	0 (0.00%)	1 (2.27%)	0 (0.00%)	6 (1.94%)
Others **	9 (4.31%)	1 (12.50%)	2 (4.76%)	0 (0.00%)	0 (0.00%)	0 (0.00%)	12 (3.88%)
Total	209 (100.00%)	8 (100.00%)	42 (100.00%)	3 (100.00%)	44 (100.00%)	3 (100.00%)	309 (100.00%)

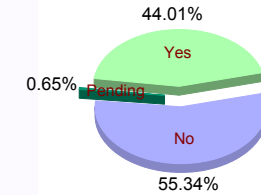


** Includes Aged Out Juveniles and Pending Records

Special Education Services

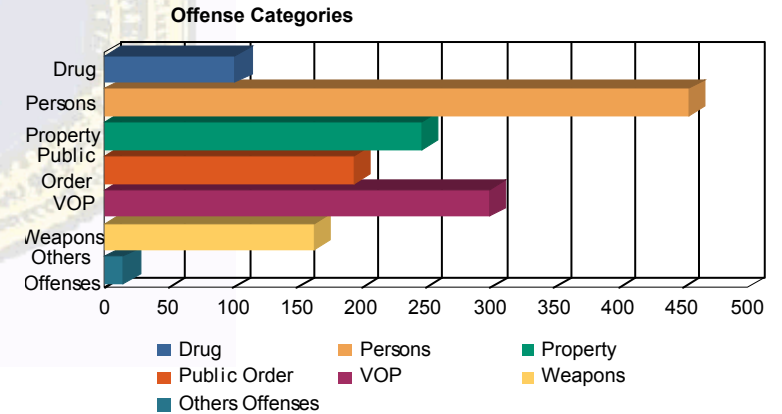
Yes	93 (44.50%)	3 (37.50%)	13 (30.95%)	2 (66.67%)	25 (56.82%)	0 (0.00%)	136 (44.01%)
No	115 (55.02%)	5 (62.50%)	28 (66.67%)	1 (33.33%)	19 (43.18%)	3 (100.00%)	171 (55.34%)
Pending	1 (0.48%)	0 (0.00%)	1 (2.38%)	0 (0.00%)	0 (0.00%)	0 (0.00%)	2 (0.65%)
Total	209 (100.00%)	8 (100.00%)	42 (100.00%)	3 (100.00%)	44 (100.00%)	3 (100.00%)	309 (100.00%)

Special Education



Offense Categories

Drug	78 (6.32%)	6 (10.71%)	6 (8.11%)	1 (7.14%)	11 (12.36%)	0 (0.00%)	102 (6.92%)
Persons	373 (30.23%)	15 (26.79%)	36 (48.65%)	5 (35.71%)	23 (25.84%)	2 (28.57%)	454 (30.80%)
Property	216 (17.50%)	8 (14.29%)	4 (5.41%)	2 (14.29%)	15 (16.85%)	2 (28.57%)	247 (16.76%)
Public Order	167 (13.53%)	10 (17.86%)	6 (8.11%)	2 (14.29%)	8 (8.99%)	1 (14.29%)	194 (13.16%)
VOP	255 (20.66%)	11 (19.64%)	4 (5.41%)	2 (14.29%)	25 (28.09%)	2 (28.57%)	299 (20.28%)
Weapons	132 (10.70%)	5 (8.93%)	18 (24.32%)	1 (7.14%)	7 (7.87%)	0 (0.00%)	163 (11.06%)
Others Offenses	13 (1.05%)	1 (1.79%)	0 (0.00%)	1 (7.14%)	0 (0.00%)	0 (0.00%)	15 (1.02%)
Total *	1,234 (100.00%)	56 (100.00%)	74 (100.00%)	14 (100.00%)	89 (100.00%)	7 (100.00%)	1,474 (100.00%)



* Juveniles may have multiple offenses