



Juvenile Demographics and Statistics

Race/ Ethnicity	COMMITTED				WAIVED				PROBATIONER		AFTERCARE				Total	
	MALE	FEMALE	MALE	FEMALE	MALE	FEMALE	MALE	FEMALE	MALE	FEMALE	MALE	FEMALE	MALE	FEMALE		
BLACK	66	70.21%	3	50.00%	40	47.62%	2	100.00%	13	76.47%	88	72.13%	3	50.00%	215	64.95%
HISPANIC	21	22.34%	1	16.67%	29	34.52%	0	0.00%	1	5.88%	25	20.49%	1	16.67%	78	23.56%
WHITE	4	4.26%	2	33.33%	12	14.29%	0	0.00%	3	17.65%	9	7.38%	2	33.33%	32	9.67%
Others	3	3.19%	0	0.00%	3	3.57%	0	0.00%	0	0.00%	0	0.00%	0	0.00%	6	1.81%
Total	94	100.00%	6	100.00%	84	100.00%	2	100.00%	17	100.00%	122	100.00%	6	100.00%	331	100.00%

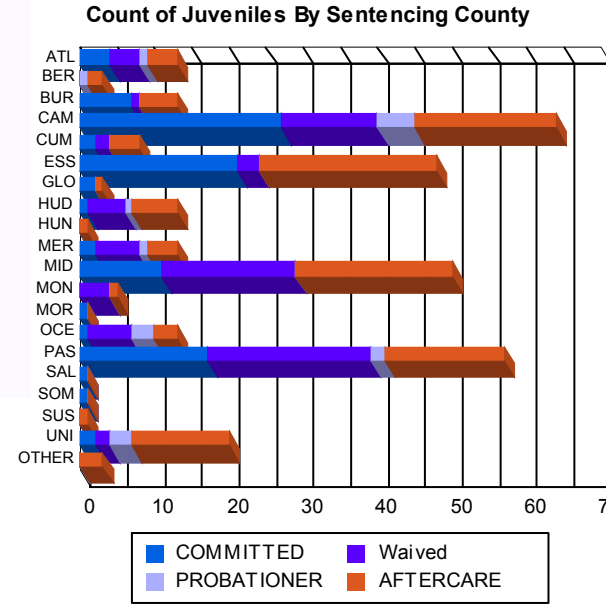
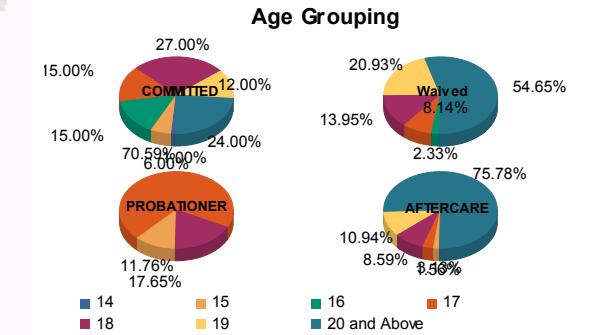
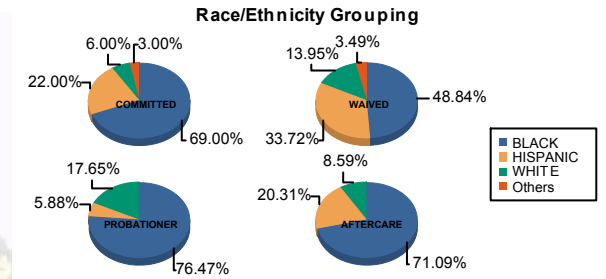
Age

14	1	1.06%	0	0.00%	0	0.00%	0	0.00%	0	0.00%	0	0.00%	0	0.00%	1	0.30%
15	6	6.38%	0	0.00%	0	0.00%	0	0.00%	2	11.76%	2	1.64%	0	0.00%	10	3.02%
16	13	13.83%	2	33.33%	2	2.38%	0	0.00%	0	0.00%	0	0.00%	0	0.00%	17	5.14%
17	13	13.83%	2	33.33%	7	8.33%	0	0.00%	12	70.59%	4	3.28%	0	0.00%	38	11.48%
18	25	26.60%	2	33.33%	11	13.10%	1	50.00%	3	17.65%	10	8.20%	1	16.67%	53	16.01%
19	12	12.77%	0	0.00%	18	21.43%	0	0.00%	0	0.00%	14	11.48%	0	0.00%	44	13.29%
20 and Above	24	25.53%	0	0.00%	46	54.76%	1	50.00%	0	0.00%	92	75.41%	5	83.33%	168	50.76%
Total	94	100.00%	6	100.00%	84	100.00%	2	100.00%	17	100.00%	122	100.00%	6	100.00%	331	100.00%

Average Age	18.59	17.00	19.58	19.50	16.94	21.75	21.67	19.95
-------------	-------	-------	-------	-------	-------	-------	-------	-------

Sentencing County

ATL	4	4.26%	0	0.00%	4	4.76%	0	0.00%	1	5.88%	4	3.28%	0	0.00%	13	3.93%
BER	0	0.00%	0	0.00%	0	0.00%	0	0.00%	1	5.88%	2	1.64%	0	0.00%	3	0.91%
BUR	7	7.45%	0	0.00%	1	1.19%	0	0.00%	0	0.00%	5	4.10%	0	0.00%	13	3.93%
CAM	23	24.47%	4	66.67%	11	13.10%	2	100.00%	5	29.41%	18	14.75%	1	16.67%	64	19.34%
CUM	2	2.13%	0	0.00%	2	2.38%	0	0.00%	0	0.00%	3	2.46%	1	16.67%	8	2.42%
ESS	21	22.34%	0	0.00%	3	3.57%	0	0.00%	0	0.00%	24	19.67%	0	0.00%	48	14.50%
GLO	2	2.13%	0	0.00%	0	0.00%	0	0.00%	0	0.00%	1	0.82%	0	0.00%	3	0.91%
HUD	1	1.06%	0	0.00%	5	5.95%	0	0.00%	1	5.88%	6	4.92%	0	0.00%	13	3.93%
HUN	0	0.00%	0	0.00%	0	0.00%	0	0.00%	0	0.00%	1	0.82%	0	0.00%	1	0.30%
MER	2	2.13%	0	0.00%	6	7.14%	0	0.00%	1	5.88%	4	3.28%	0	0.00%	13	3.93%
MID	10	10.64%	1	16.67%	18	21.43%	0	0.00%	0	0.00%	19	15.57%	2	33.33%	50	15.11%
MON	0	0.00%	0	0.00%	4	4.76%	0	0.00%	0	0.00%	1	0.82%	0	0.00%	5	1.51%
MOR	1	1.06%	0	0.00%	0	0.00%	0	0.00%	0	0.00%	0	0.00%	0	0.00%	1	0.30%
OCE	1	1.06%	0	0.00%	6	7.14%	0	0.00%	3	17.65%	3	2.46%	0	0.00%	13	3.93%
PAS	16	17.02%	1	16.67%	22	26.19%	0	0.00%	2	11.76%	15	12.30%	1	16.67%	57	17.22%
SAL	1	1.06%	0	0.00%	0	0.00%	0	0.00%	0	0.00%	0	0.00%	0	0.00%	1	0.30%
SOM	1	1.06%	0	0.00%	0	0.00%	0	0.00%	0	0.00%	0	0.00%	0	0.00%	1	0.30%
SUS	0	0.00%	0	0.00%	0	0.00%	0	0.00%	0	0.00%	1	0.82%	0	0.00%	1	0.30%
UNI	2	2.13%	0	0.00%	2	2.38%	0	0.00%	3	17.65%	12	9.84%	1	16.67%	20	6.04%
OTHER	0	0.00%	0	0.00%	0	0.00%	0	0.00%	0	0.00%	3	2.46%	0	0.00%	3	0.91%
Total	94	100.00%	6	100.00%	84	100.00%	2	100.00%	17	100.00%	122	100.00%	6	100.00%	331	100.00%





Juvenile Demographics and Statistics

Current Grade	COMMITTED		WAIVED		PROBATIONER		Total
	MALE	FEMALE	MALE	FEMALE	MALE	FEMALE	
8	2 (2.13%)	0 (0.00%)	0 (0.00%)	0 (0.00%)	0 (0.00%)	0 (0.00%)	2 (0.99%)
9	13 (13.83%)	0 (0.00%)	1 (1.19%)	0 (0.00%)	3 (17.65%)	0 (0.00%)	17 (8.37%)
10	15 (15.96%)	4 (66.67%)	2 (2.38%)	0 (0.00%)	5 (29.41%)	0 (0.00%)	26 (12.81%)
11	15 (15.96%)	1 (16.67%)	9 (10.71%)	1 (50.00%)	4 (23.53%)	0 (0.00%)	30 (14.78%)
12	12 (12.77%)	1 (16.67%)	12 (14.29%)	0 (0.00%)	1 (5.88%)	0 (0.00%)	26 (12.81%)
HSG	13 (13.83%)	0 (0.00%)	30 (35.71%)	1 (50.00%)	0 (0.00%)	0 (0.00%)	44 (21.67%)
GED	0 (0.00%)	0 (0.00%)	2 (2.38%)	0 (0.00%)	0 (0.00%)	0 (0.00%)	2 (0.99%)
Others **	24 (25.53%)	0 (0.00%)	28 (33.33%)	0 (0.00%)	4 (23.53%)	0 (0.00%)	56 (27.59%)
Total	94 (100.00%)	6 (100.00%)	84 (100.00%)	2 (100.00%)	17 (100.00%)	0 (0.00%)	203 (100.00%)

** Includes Aged Out Juveniles and Pending Records

Special Education Services

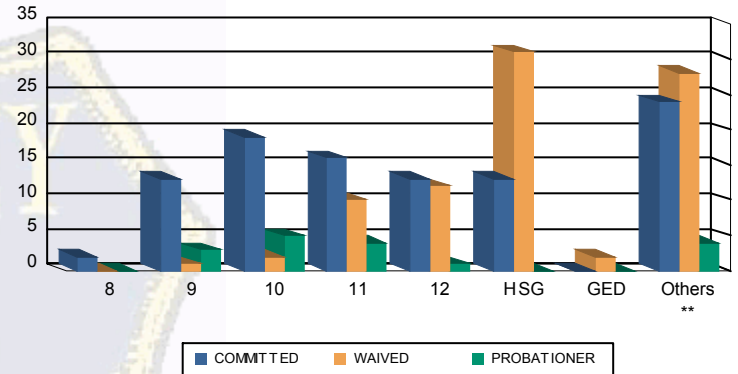
Yes	50 (53.19%)	5 (83.33%)	32 (38.10%)	2 (100.00%)	9 (52.94%)	0 (0.00%)	98 (48.28%)
No	34 (36.17%)	1 (16.67%)	50 (59.52%)	0 (0.00%)	7 (41.18%)	0 (0.00%)	92 (45.32%)
Pending	10 (10.64%)	0 (0.00%)	2 (2.38%)	0 (0.00%)	1 (5.88%)	0 (0.00%)	13 (6.40%)
Total	94 (100.00%)	6 (100.00%)	84 (100.00%)	2 (100.00%)	17 (100.00%)	0 (0.00%)	203 (100.00%)

Offense Categories

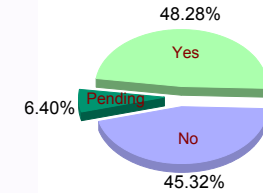
Drug	57 (7.70%)	4 (11.76%)	8 (5.23%)	0 (0.00%)	5 (7.58%)	0 (0.00%)	74 (7.44%)
Persons	222 (30.00%)	8 (23.53%)	87 (56.86%)	2 (100.00%)	11 (16.67%)	0 (0.00%)	330 (33.17%)
Property	117 (15.81%)	4 (11.76%)	14 (9.15%)	0 (0.00%)	10 (15.15%)	0 (0.00%)	145 (14.57%)
Public Order	80 (10.81%)	4 (11.76%)	10 (6.54%)	0 (0.00%)	11 (16.67%)	0 (0.00%)	105 (10.55%)
VOP	153 (20.68%)	8 (23.53%)	16 (10.46%)	0 (0.00%)	17 (25.76%)	0 (0.00%)	194 (19.50%)
Weapons	109 (14.73%)	6 (17.65%)	18 (11.76%)	0 (0.00%)	11 (16.67%)	0 (0.00%)	144 (14.47%)
Others Offenses	2 (0.27%)	0 (0.00%)	0 (0.00%)	0 (0.00%)	1 (1.52%)	0 (0.00%)	3 (0.30%)
Total *	740 (100.00%)	34 (100.00%)	153 (100.00%)	2 (100.00%)	66 (100.00%)	0 (0.00%)	995 (100.00%)

* Juveniles may have multiple offenses

Current Grade



Special Education



Offense Categories

