



Juvenile Demographics and Statistics

Race/ Ethnicity	COMMITTED		WAIVED		PROBATIONER		AFTERCARE		Total							
	MALE	FEMALE	MALE	FEMALE	MALE	MALE	FEMALE	MALE	FEMALE	Total						
BLACK	73	70.19%	2	40.00%	39	45.88%	2	66.67%	14	87.50%	80	72.73%	4	50.00%	214	64.65%
HISPANIC	24	23.08%	1	20.00%	32	37.65%	0	0.00%	1	6.25%	22	20.00%	1	12.50%	81	24.47%
WHITE	4	3.85%	2	40.00%	11	12.94%	1	33.33%	1	6.25%	8	7.27%	3	37.50%	30	9.06%
Others	3	2.88%	0	0.00%	3	3.53%	0	0.00%	0	0.00%	0	0.00%	0	0.00%	6	1.81%
Total	104	100.00%	5	100.00%	85	100.00%	3	100.00%	16	100.00%	110	100.00%	8	100.00%	331	100.00%

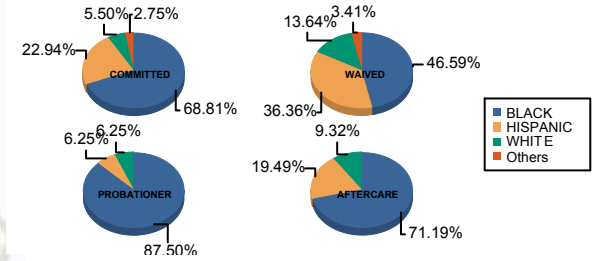
Age

13 and Below	0	0.00%	0	0.00%	0	0.00%	0	0.00%	1	6.25%	0	0.00%	0	0.00%	1	0.30%
14	2	1.92%	0	0.00%	0	0.00%	0	0.00%	1	6.25%	0	0.00%	1	12.50%	4	1.21%
15	4	3.85%	0	0.00%	0	0.00%	0	0.00%	0	0.00%	1	0.91%	0	0.00%	5	1.51%
16	15	14.42%	1	20.00%	3	3.53%	0	0.00%	0	0.00%	2	1.82%	0	0.00%	21	6.34%
17	19	18.27%	2	40.00%	3	3.53%	0	0.00%	10	62.50%	2	1.82%	1	12.50%	37	11.18%
18	26	25.00%	2	40.00%	15	17.65%	1	33.33%	4	25.00%	7	6.36%	1	12.50%	56	16.92%
19	13	12.50%	0	0.00%	13	15.29%	1	33.33%	0	0.00%	14	12.73%	0	0.00%	41	12.39%
20 and Above	25	24.04%	0	0.00%	51	60.00%	1	33.33%	0	0.00%	84	76.36%	5	62.50%	166	50.15%
Total	104	100.00%	5	100.00%	85	100.00%	3	100.00%	16	100.00%	110	100.00%	8	100.00%	331	100.00%
Average Age	18.49		17.20		19.69		19.33		16.81		21.98		20.25		19.91	

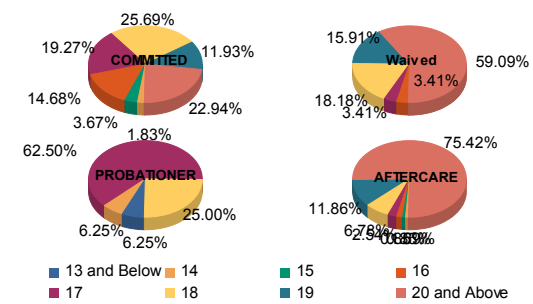
Sentencing County

ATL	4	3.85%	0	0.00%	4	4.71%	0	0.00%	1	6.25%	4	3.64%	0	0.00%	13	3.93%
BER	0	0.00%	0	0.00%	0	0.00%	0	0.00%	1	6.25%	1	0.91%	0	0.00%	2	0.60%
BUR	8	7.69%	0	0.00%	1	1.18%	0	0.00%	1	6.25%	5	4.55%	0	0.00%	15	4.53%
CAM	27	25.96%	4	80.00%	11	12.94%	2	66.67%	3	18.75%	16	14.55%	1	12.50%	64	19.34%
CUM	4	3.85%	0	0.00%	2	2.35%	0	0.00%	1	6.25%	2	1.82%	1	12.50%	10	3.02%
ESS	18	17.31%	0	0.00%	3	3.53%	0	0.00%	1	6.25%	23	20.91%	0	0.00%	45	13.60%
GLO	2	1.92%	0	0.00%	0	0.00%	0	0.00%	0	0.00%	1	0.91%	0	0.00%	3	0.91%
HUD	2	1.92%	0	0.00%	5	5.88%	0	0.00%	2	12.50%	5	4.55%	0	0.00%	14	4.23%
HUN	0	0.00%	0	0.00%	0	0.00%	0	0.00%	0	0.00%	1	0.91%	0	0.00%	1	0.30%
MER	5	4.81%	0	0.00%	6	7.06%	0	0.00%	1	6.25%	4	3.64%	0	0.00%	16	4.83%
MID	11	10.58%	1	20.00%	19	22.35%	1	33.33%	0	0.00%	17	15.45%	2	25.00%	51	15.41%
MON	0	0.00%	0	0.00%	4	4.71%	0	0.00%	0	0.00%	1	0.91%	0	0.00%	5	1.51%
MOR	1	0.96%	0	0.00%	0	0.00%	0	0.00%	0	0.00%	0	0.00%	0	0.00%	1	0.30%
OCE	1	0.96%	0	0.00%	7	8.24%	0	0.00%	3	18.75%	3	2.73%	0	0.00%	14	4.23%
PAS	16	15.38%	0	0.00%	21	24.71%	0	0.00%	1	6.25%	13	11.82%	2	25.00%	53	16.01%
SAL	1	0.96%	0	0.00%	0	0.00%	0	0.00%	0	0.00%	0	0.00%	0	0.00%	1	0.30%
SOM	1	0.96%	0	0.00%	0	0.00%	0	0.00%	0	0.00%	0	0.00%	0	0.00%	1	0.30%
SUS	0	0.00%	0	0.00%	0	0.00%	0	0.00%	0	0.00%	1	0.91%	0	0.00%	1	0.30%
UNI	3	2.88%	0	0.00%	2	2.35%	0	0.00%	1	6.25%	11	10.00%	1	12.50%	18	5.44%
OTHER	0	0.00%	0	0.00%	0	0.00%	0	0.00%	0	0.00%	2	1.82%	1	12.50%	3	0.91%
Total	104	100.00%	5	100.00%	85	100.00%	3	100.00%	16	100.00%	110	100.00%	8	100.00%	331	100.00%

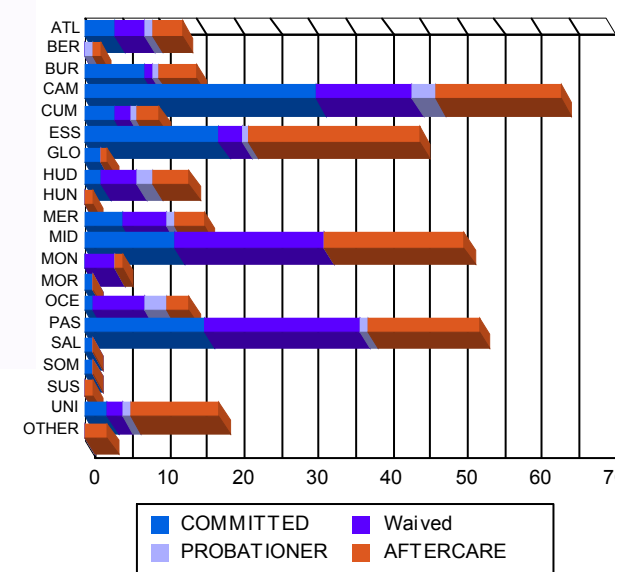
Race/Ethnicity Grouping



Age Grouping



Count of Juveniles By Sentencing County





Juvenile Demographics and Statistics

Current Grade	COMMITTED		WAIVED		PROBATIONER		Total
	MALE	FEMALE	MALE	FEMALE	MALE	FEMALE	
7	1 (0.96%)	0 0.00%	0 0.00%	0 0.00%	1 (6.25%)	0 0.00%	2 (0.94%)
8	1 (0.96%)	0 0.00%	0 0.00%	0 0.00%	0 0.00%	0 0.00%	1 (0.47%)
9	13 (12.50%)	0 0.00%	1 (1.18%)	0 0.00%	0 0.00%	0 0.00%	14 (6.57%)
10	17 (16.35%)	2 (40.00%)	2 (2.35%)	0 0.00%	4 (25.00%)	0 0.00%	25 (11.74%)
11	19 (18.27%)	1 (20.00%)	6 (7.06%)	1 (33.33%)	5 (31.25%)	1 (6.25%)	32 (15.02%)
12	12 (11.54%)	1 (20.00%)	15 (17.65%)	0 0.00%	1 (6.25%)	0 0.00%	29 (13.62%)
HSG	12 (11.54%)	0 0.00%	28 (32.94%)	1 (33.33%)	0 0.00%	0 0.00%	41 (19.25%)
GED	0 0.00%	0 0.00%	2 (2.35%)	0 0.00%	0 0.00%	0 0.00%	2 (0.94%)
Others **	29 (27.88%)	1 (20.00%)	31 (36.47%)	1 (33.33%)	5 (31.25%)	1 (6.25%)	67 (31.46%)
Total	104 (100.00%)	5 (100.00%)	85 (100.00%)	3 (100.00%)	16 (100.00%)	16 (100.00%)	213 (100.00%)

** Includes Aged Out Juveniles and Pending Records

Special Education Services

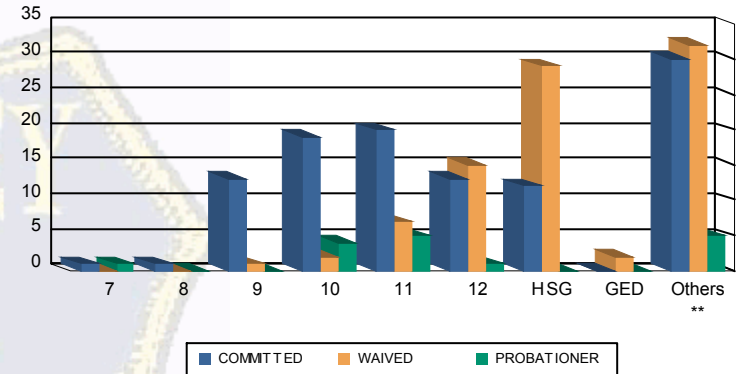
Yes	56 (53.85%)	4 (80.00%)	31 (36.47%)	2 (66.67%)	7 (43.75%)	100 (46.95%)
No	39 (37.50%)	1 (20.00%)	51 (60.00%)	0 0.00%	8 (50.00%)	99 (46.48%)
Pending	9 (8.65%)	0 0.00%	3 (3.53%)	1 (33.33%)	1 (6.25%)	14 (6.57%)
Total	104 (100.00%)	5 (100.00%)	85 (100.00%)	3 (100.00%)	16 (100.00%)	213 (100.00%)

Offense Categories

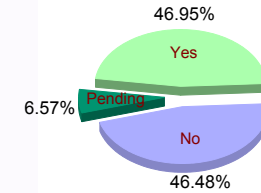
Drug	49 (6.87%)	4 (11.76%)	8 (5.10%)	0 0.00%	6 (9.68%)	0 0.00%	67 (6.91%)
Persons	218 (30.58%)	8 (23.53%)	89 (56.69%)	3 (100.00%)	10 (16.13%)	1 (100.00%)	329 (33.92%)
Property	113 (15.85%)	4 (11.76%)	14 (8.92%)	0 0.00%	9 (14.52%)	0 0.00%	140 (14.43%)
Public Order	79 (11.08%)	4 (11.76%)	10 (6.37%)	0 0.00%	10 (16.13%)	0 0.00%	103 (10.62%)
VOP	146 (20.48%)	8 (23.53%)	16 (10.19%)	0 0.00%	16 (25.81%)	0 0.00%	186 (19.18%)
Weapons	106 (14.87%)	6 (17.65%)	20 (12.74%)	0 0.00%	10 (16.13%)	0 0.00%	142 (14.64%)
Others Offenses	2 (0.28%)	0 0.00%	0 0.00%	0 0.00%	1 (1.61%)	0 0.00%	3 (0.31%)
Total *	713 (100.00%)	34 (100.00%)	157 (100.00%)	3 (100.00%)	62 (100.00%)	1 (100.00%)	970 (100.00%)

* Juveniles may have multiple offenses

Current Grade



Special Education



Offense Categories

