



Juvenile Demographics and Statistics

Race/ Ethnicity	COMMITTED				WAIVED				PROBATIONER		AFTERCARE				Total	
	MALE	FEMALE	MALE	FEMALE	MALE	FEMALE	MALE	FEMALE	MALE	FEMALE	MALE	FEMALE	MALE	FEMALE		
BLACK	74	71.15%	2	40.00%	40	46.51%	2	66.67%	17	89.47%	82	73.87%	4	50.00%	221	65.77%
HISPANIC	24	23.08%	1	20.00%	32	37.21%	0	0.00%	1	5.26%	21	18.92%	1	12.50%	80	23.81%
WHITE	3	2.88%	2	40.00%	11	12.79%	1	33.33%	1	5.26%	8	7.21%	3	37.50%	29	8.63%
Others	3	2.88%	0	0.00%	3	3.49%	0	0.00%	0	0.00%	0	0.00%	0	0.00%	6	1.79%
<b>Total</b>	<b>104</b>	<b>100.00%</b>	<b>5</b>	<b>100.00%</b>	<b>86</b>	<b>100.00%</b>	<b>3</b>	<b>100.00%</b>	<b>19</b>	<b>100.00%</b>	<b>111</b>	<b>100.00%</b>	<b>8</b>	<b>100.00%</b>	<b>336</b>	<b>100.00%</b>

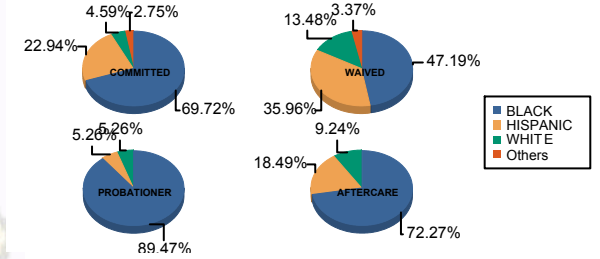
**Age**

13 and Below	0	0.00%	0	0.00%	0	0.00%	0	0.00%	1	5.26%	0	0.00%	0	0.00%	1	0.30%
14	3	2.88%	0	0.00%	0	0.00%	0	0.00%	1	5.26%	0	0.00%	1	12.50%	5	1.49%
15	3	2.88%	0	0.00%	0	0.00%	0	0.00%	0	0.00%	1	0.90%	0	0.00%	4	1.19%
16	15	14.42%	1	20.00%	3	3.49%	0	0.00%	2	10.53%	2	1.80%	0	0.00%	23	6.85%
17	20	19.23%	2	40.00%	3	3.49%	0	0.00%	11	57.89%	3	2.70%	1	12.50%	40	11.90%
18	26	25.00%	2	40.00%	16	18.60%	1	33.33%	4	21.05%	7	6.31%	1	12.50%	57	16.96%
19	13	12.50%	0	0.00%	12	13.95%	1	33.33%	0	0.00%	13	11.71%	0	0.00%	39	11.61%
20 and Above	24	23.08%	0	0.00%	52	60.47%	1	33.33%	0	0.00%	85	76.58%	5	62.50%	167	49.70%
<b>Total</b>	<b>104</b>	<b>100.00%</b>	<b>5</b>	<b>100.00%</b>	<b>86</b>	<b>100.00%</b>	<b>3</b>	<b>100.00%</b>	<b>19</b>	<b>100.00%</b>	<b>111</b>	<b>100.00%</b>	<b>8</b>	<b>100.00%</b>	<b>336</b>	<b>100.00%</b>
<b>Average Age</b>	<b>18.46</b>		<b>17.20</b>		<b>19.69</b>		<b>19.33</b>		<b>16.74</b>		<b>21.95</b>		<b>20.25</b>		<b>19.86</b>	

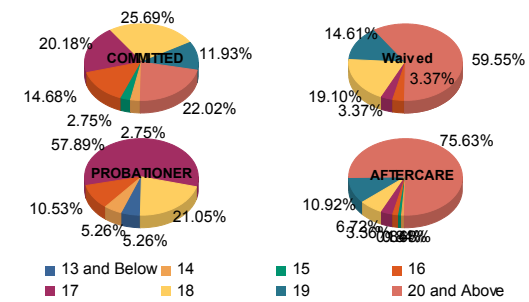
**Sentencing County**

ATL	4	3.85%	0	0.00%	4	4.65%	0	0.00%	1	5.26%	4	3.60%	0	0.00%	13	3.87%
BER	0	0.00%	0	0.00%	0	0.00%	0	0.00%	2	10.53%	1	0.90%	0	0.00%	3	0.89%
BUR	8	7.69%	0	0.00%	1	1.16%	0	0.00%	2	10.53%	5	4.50%	0	0.00%	16	4.76%
CAM	27	25.96%	4	80.00%	11	12.79%	2	66.67%	3	15.79%	17	15.32%	1	12.50%	65	19.35%
CUM	4	3.85%	0	0.00%	2	2.33%	0	0.00%	1	5.26%	2	1.80%	1	12.50%	10	2.98%
ESS	18	17.31%	0	0.00%	3	3.49%	0	0.00%	2	10.53%	23	20.72%	0	0.00%	46	13.69%
GLO	2	1.92%	0	0.00%	0	0.00%	0	0.00%	0	0.00%	1	0.90%	0	0.00%	3	0.89%
HUD	2	1.92%	0	0.00%	5	5.81%	0	0.00%	2	10.53%	5	4.50%	0	0.00%	14	4.17%
HUN	0	0.00%	0	0.00%	0	0.00%	0	0.00%	0	0.00%	1	0.90%	0	0.00%	1	0.30%
MER	5	4.81%	0	0.00%	6	6.98%	0	0.00%	1	5.26%	4	3.60%	0	0.00%	16	4.76%
MID	10	9.62%	1	20.00%	19	22.09%	1	33.33%	0	0.00%	18	16.22%	2	25.00%	51	15.18%
MON	0	0.00%	0	0.00%	4	4.65%	0	0.00%	0	0.00%	1	0.90%	0	0.00%	5	1.49%
MOR	1	0.96%	0	0.00%	0	0.00%	0	0.00%	0	0.00%	0	0.00%	0	0.00%	1	0.30%
OCE	1	0.96%	0	0.00%	7	8.14%	0	0.00%	3	15.79%	3	2.70%	0	0.00%	14	4.17%
PAS	17	16.35%	0	0.00%	22	25.58%	0	0.00%	1	5.26%	13	11.71%	2	25.00%	55	16.37%
SAL	1	0.96%	0	0.00%	0	0.00%	0	0.00%	0	0.00%	0	0.00%	0	0.00%	1	0.30%
SOM	1	0.96%	0	0.00%	0	0.00%	0	0.00%	0	0.00%	0	0.00%	0	0.00%	1	0.30%
SUS	0	0.00%	0	0.00%	0	0.00%	0	0.00%	0	0.00%	1	0.90%	0	0.00%	1	0.30%
UNI	3	2.88%	0	0.00%	2	2.33%	0	0.00%	1	5.26%	10	9.01%	1	12.50%	17	5.06%
OTHER	0	0.00%	0	0.00%	0	0.00%	0	0.00%	0	0.00%	2	1.80%	1	12.50%	3	0.89%
<b>Total</b>	<b>104</b>	<b>100.00%</b>	<b>5</b>	<b>100.00%</b>	<b>86</b>	<b>100.00%</b>	<b>3</b>	<b>100.00%</b>	<b>19</b>	<b>100.00%</b>	<b>111</b>	<b>100.00%</b>	<b>8</b>	<b>100.00%</b>	<b>336</b>	<b>100.00%</b>

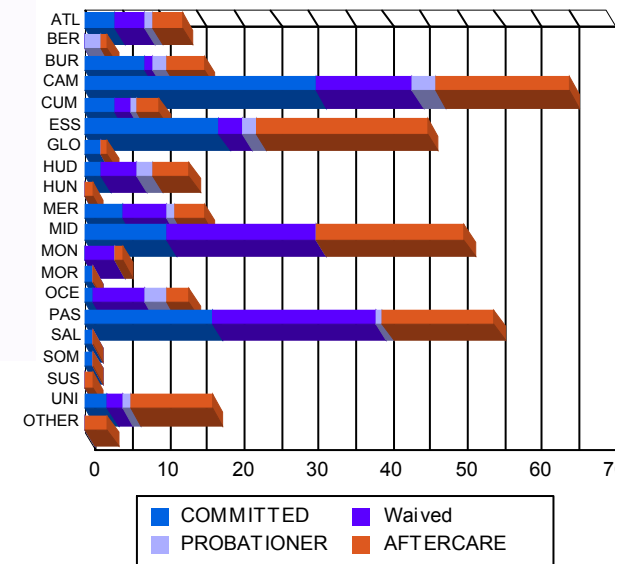
**Race/Ethnicity Grouping**



**Age Grouping**



**Count of Juveniles By Sentencing County**





Juvenile Demographics and Statistics

Current Grade	COMMITTED		WAIVED		PROBATIONER		Total
	MALE	FEMALE	MALE	FEMALE	MALE	FEMALE	
7	1 (0.96%)	0 0.00%	0 0.00%	0 0.00%	1 (5.26%)	0 0.00%	2 (0.92%)
8	1 (0.96%)	0 0.00%	0 0.00%	0 0.00%	1 (5.26%)	0 0.00%	2 (0.92%)
9	15 (14.42%)	0 0.00%	1 (1.16%)	0 0.00%	1 (5.26%)	0 0.00%	17 (7.83%)
10	17 (16.35%)	2 (40.00%)	2 (2.33%)	0 0.00%	4 (21.05%)	0 0.00%	25 (11.52%)
11	17 (16.35%)	1 (20.00%)	6 (6.98%)	1 (33.33%)	5 (26.32%)	0 0.00%	30 (13.82%)
12	13 (12.50%)	1 (20.00%)	16 (18.60%)	0 0.00%	1 (5.26%)	0 0.00%	31 (14.29%)
HSG	11 (10.58%)	0 0.00%	28 (32.56%)	1 (33.33%)	0 0.00%	0 0.00%	40 (18.43%)
GED	0 0.00%	0 0.00%	2 (2.33%)	0 0.00%	0 0.00%	0 0.00%	2 (0.92%)
Others **	29 (27.88%)	1 (20.00%)	31 (36.05%)	1 (33.33%)	6 (31.58%)	0 0.00%	68 (31.34%)
<b>Total</b>	<b>104 (100.00%)</b>	<b>5 (100.00%)</b>	<b>86 (100.00%)</b>	<b>3 (100.00%)</b>	<b>19 (100.00%)</b>	<b>0 (0.00%)</b>	<b>217 (100.00%)</b>

\*\* Includes Aged Out Juveniles and Pending Records

Special Education Services

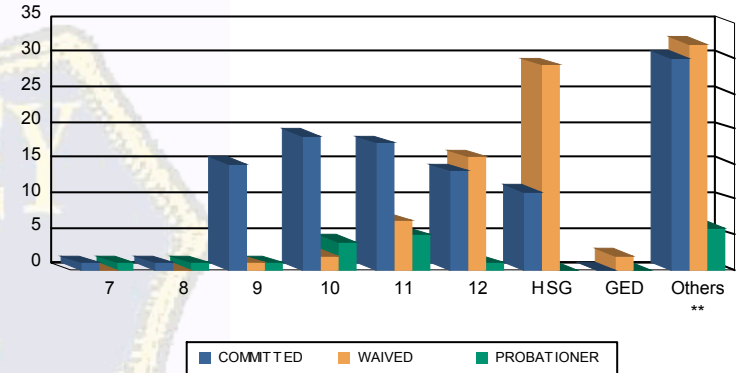
Yes	54 (51.92%)	4 (80.00%)	32 (37.21%)	2 (66.67%)	8 (42.11%)	0 0.00%	100 (46.08%)
No	41 (39.42%)	1 (20.00%)	51 (59.30%)	0 0.00%	9 (47.37%)	0 0.00%	102 (47.00%)
Pending	9 (8.65%)	0 0.00%	3 (3.49%)	1 (33.33%)	2 (10.53%)	0 0.00%	15 (6.91%)
<b>Total</b>	<b>104 (100.00%)</b>	<b>5 (100.00%)</b>	<b>86 (100.00%)</b>	<b>3 (100.00%)</b>	<b>19 (100.00%)</b>	<b>0 (0.00%)</b>	<b>217 (100.00%)</b>

Offense Categories

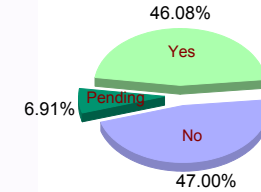
Drug	49 (6.88%)	4 (11.76%)	8 (5.10%)	0 0.00%	6 (9.68%)	0 0.00%	67 (6.91%)
Persons	218 (30.62%)	8 (23.53%)	90 (57.32%)	3 (100.00%)	10 (16.13%)	1 (100.00%)	330 (34.06%)
Property	113 (15.87%)	4 (11.76%)	14 (8.92%)	0 0.00%	9 (14.52%)	0 0.00%	140 (14.45%)
Public Order	79 (11.10%)	4 (11.76%)	10 (6.37%)	0 0.00%	10 (16.13%)	0 0.00%	103 (10.63%)
VOP	146 (20.51%)	8 (23.53%)	16 (10.19%)	0 0.00%	16 (25.81%)	0 0.00%	186 (19.20%)
Weapons	105 (14.75%)	6 (17.65%)	19 (12.10%)	0 0.00%	10 (16.13%)	0 0.00%	140 (14.45%)
Others Offenses	2 (0.28%)	0 0.00%	0 0.00%	0 0.00%	1 (1.61%)	0 0.00%	3 (0.31%)
<b>Total *</b>	<b>712 (100.00%)</b>	<b>34 (100.00%)</b>	<b>157 (100.00%)</b>	<b>3 (100.00%)</b>	<b>62 (100.00%)</b>	<b>1 (100.00%)</b>	<b>969 (100.00%)</b>

\* Juveniles may have multiple offenses

Current Grade



Special Education



Offense Categories

