



Juvenile Demographics and Statistics

Race/ Ethnicity	COMMITTED		WAIVED		PROBATIONER		AFTERCARE		Total									
	MALE	FEMALE	MALE	FEMALE	MALE	FEMALE	MALE	FEMALE										
BLACK	74	71.15%	2	40.00%	40	47.62%	2	100.00%	9	90.00%	2	100.00%	83	73.45%	3	50.00%	215	65.95%
HISPANIC	25	24.04%	1	20.00%	31	36.90%	0	0.00%	0	0.00%	0	0.00%	22	19.47%	1	16.67%	80	24.54%
WHITE	2	1.92%	2	40.00%	10	11.90%	0	0.00%	1	10.00%	0	0.00%	8	7.08%	2	33.33%	25	7.67%
Others	3	2.88%	0	0.00%	3	3.57%	0	0.00%	0	0.00%	0	0.00%	0	0.00%	0	0.00%	6	1.84%
<b>Total</b>	<b>104</b>	<b>100.00%</b>	<b>5</b>	<b>100.00%</b>	<b>84</b>	<b>100.00%</b>	<b>2</b>	<b>100.00%</b>	<b>10</b>	<b>100.00%</b>	<b>2</b>	<b>100.00%</b>	<b>113</b>	<b>100.00%</b>	<b>6</b>	<b>100.00%</b>	<b>326</b>	<b>100.00%</b>

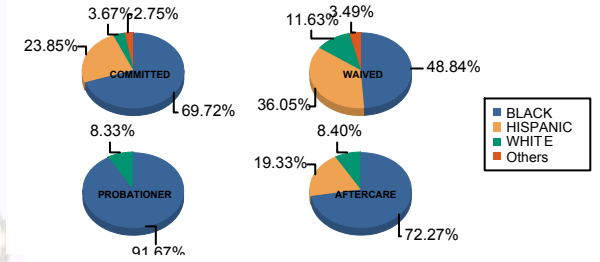
**Age**

13 and Below	0	0.00%	0	0.00%	0	0.00%	0	0.00%	1	10.00%	0	0.00%	0	0.00%	0	0.00%	1	0.31%
14	3	2.88%	0	0.00%	0	0.00%	0	0.00%	1	10.00%	0	0.00%	0	0.00%	0	0.00%	4	1.23%
15	4	3.85%	0	0.00%	0	0.00%	0	0.00%	0	0.00%	1	50.00%	1	0.88%	1	16.67%	7	2.15%
16	14	13.46%	0	0.00%	1	1.19%	0	0.00%	2	20.00%	1	50.00%	1	0.88%	0	0.00%	19	5.83%
17	20	19.23%	3	60.00%	4	4.76%	0	0.00%	1	10.00%	0	0.00%	3	2.65%	0	0.00%	31	9.51%
18	22	21.15%	2	40.00%	15	17.86%	1	50.00%	5	50.00%	0	0.00%	9	7.96%	0	0.00%	54	16.56%
19	17	16.35%	0	0.00%	8	9.52%	0	0.00%	0	0.00%	0	0.00%	15	13.27%	1	16.67%	41	12.58%
20 and Above	24	23.08%	0	0.00%	56	66.67%	1	50.00%	0	0.00%	0	0.00%	84	74.34%	4	66.67%	169	51.84%
<b>Total</b>	<b>104</b>	<b>100.00%</b>	<b>5</b>	<b>100.00%</b>	<b>84</b>	<b>100.00%</b>	<b>2</b>	<b>100.00%</b>	<b>10</b>	<b>100.00%</b>	<b>2</b>	<b>100.00%</b>	<b>113</b>	<b>100.00%</b>	<b>6</b>	<b>100.00%</b>	<b>326</b>	<b>100.00%</b>
<b>Average Age</b>	<b>18.50</b>		<b>17.40</b>		<b>19.87</b>		<b>19.50</b>		<b>16.60</b>		<b>15.50</b>		<b>21.89</b>		<b>21.00</b>		<b>19.99</b>	

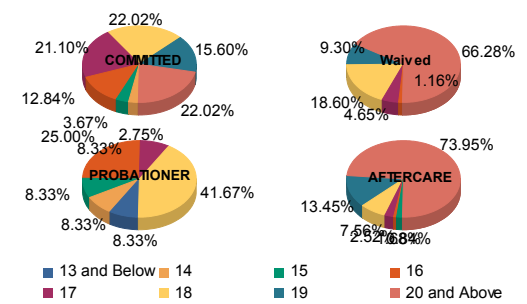
**Sentencing County**

ATL	3	2.88%	0	0.00%	4	4.76%	0	0.00%	0	0.00%	0	0.00%	5	4.42%	0	0.00%	12	3.68%
BER	0	0.00%	0	0.00%	0	0.00%	0	0.00%	1	10.00%	0	0.00%	1	0.88%	0	0.00%	2	0.61%
BUR	8	7.69%	0	0.00%	1	1.19%	0	0.00%	2	20.00%	0	0.00%	5	4.42%	0	0.00%	16	4.91%
CAM	30	28.85%	4	80.00%	9	10.71%	2	100.00%	1	10.00%	1	50.00%	18	15.93%	1	16.67%	66	20.25%
CUM	4	3.85%	0	0.00%	2	2.38%	0	0.00%	1	10.00%	0	0.00%	1	0.88%	1	16.67%	9	2.76%
ESS	16	15.38%	0	0.00%	3	3.57%	0	0.00%	2	20.00%	0	0.00%	24	21.24%	0	0.00%	45	13.80%
GLO	2	1.92%	0	0.00%	0	0.00%	0	0.00%	0	0.00%	0	0.00%	1	0.88%	0	0.00%	3	0.92%
HUD	1	0.96%	0	0.00%	5	5.95%	0	0.00%	1	10.00%	0	0.00%	5	4.42%	0	0.00%	12	3.68%
HUN	0	0.00%	0	0.00%	0	0.00%	0	0.00%	0	0.00%	0	0.00%	1	0.88%	0	0.00%	1	0.31%
MER	5	4.81%	0	0.00%	6	7.14%	0	0.00%	0	0.00%	0	0.00%	4	3.54%	0	0.00%	15	4.60%
MID	9	8.65%	1	20.00%	19	22.62%	0	0.00%	0	0.00%	0	0.00%	18	15.93%	1	16.67%	48	14.72%
MON	0	0.00%	0	0.00%	4	4.76%	0	0.00%	0	0.00%	0	0.00%	1	0.88%	0	0.00%	5	1.53%
MOR	1	0.96%	0	0.00%	0	0.00%	0	0.00%	0	0.00%	0	0.00%	0	0.00%	0	0.00%	1	0.31%
OCE	1	0.96%	0	0.00%	7	8.33%	0	0.00%	2	20.00%	0	0.00%	3	2.65%	0	0.00%	13	3.99%
PAS	19	18.27%	0	0.00%	22	26.19%	0	0.00%	0	0.00%	1	50.00%	14	12.39%	1	16.67%	57	17.48%
SAL	1	0.96%	0	0.00%	0	0.00%	0	0.00%	0	0.00%	0	0.00%	0	0.00%	0	0.00%	1	0.31%
SOM	1	0.96%	0	0.00%	0	0.00%	0	0.00%	0	0.00%	0	0.00%	0	0.00%	0	0.00%	1	0.31%
SUS	0	0.00%	0	0.00%	0	0.00%	0	0.00%	0	0.00%	0	0.00%	1	0.88%	0	0.00%	1	0.31%
UNI	3	2.88%	0	0.00%	2	2.38%	0	0.00%	0	0.00%	0	0.00%	9	7.96%	1	16.67%	15	4.60%
OTHER	0	0.00%	0	0.00%	0	0.00%	0	0.00%	0	0.00%	0	0.00%	2	1.77%	1	16.67%	3	0.92%
<b>Total</b>	<b>104</b>	<b>100.00%</b>	<b>5</b>	<b>100.00%</b>	<b>84</b>	<b>100.00%</b>	<b>2</b>	<b>100.00%</b>	<b>10</b>	<b>100.00%</b>	<b>2</b>	<b>100.00%</b>	<b>113</b>	<b>100.00%</b>	<b>6</b>	<b>100.00%</b>	<b>326</b>	<b>100.00%</b>

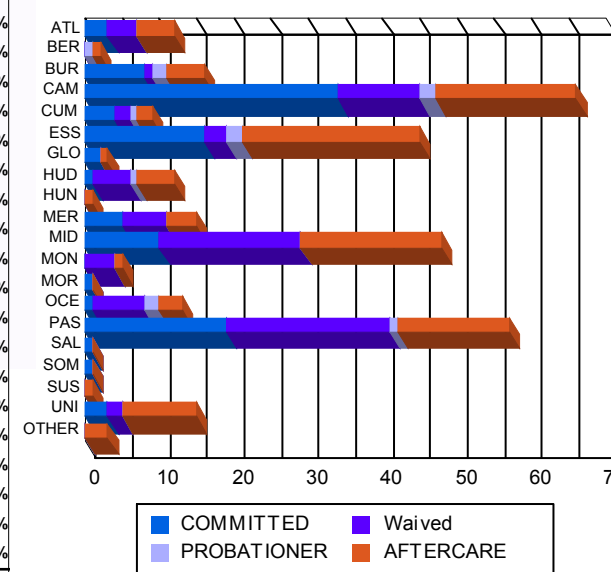
**Race/Ethnicity Grouping**



**Age Grouping**



**Count of Juveniles By Sentencing County**





Juvenile Demographics and Statistics

Current Grade	COMMITTED		WAIVED		PROBATIONER		Total
	MALE	FEMALE	MALE	FEMALE	MALE	FEMALE	
7	1 (0.96%)	0 0.00%	0 0.00%	0 0.00%	2 (20.00%)	0 0.00%	3 (1.45%)
8	1 (0.96%)	0 0.00%	0 0.00%	0 0.00%	0 0.00%	0 0.00%	1 (0.48%)
9	16 (15.38%)	0 0.00%	1 (1.19%)	0 0.00%	2 (20.00%)	1 (50.00%)	20 (9.66%)
10	18 (17.31%)	1 (20.00%)	2 (2.38%)	0 0.00%	1 (10.00%)	0 0.00%	22 (10.63%)
11	15 (14.42%)	2 (40.00%)	6 (7.14%)	1 (50.00%)	2 (20.00%)	0 0.00%	26 (12.56%)
12	14 (13.46%)	1 (20.00%)	13 (15.48%)	0 0.00%	0 0.00%	0 0.00%	28 (13.53%)
HSG	10 (9.62%)	0 0.00%	28 (33.33%)	1 (50.00%)	0 0.00%	0 0.00%	39 (18.84%)
GED	0 0.00%	0 0.00%	2 (2.38%)	0 0.00%	0 0.00%	0 0.00%	2 (0.97%)
Others **	29 (27.88%)	1 (20.00%)	32 (38.10%)	0 0.00%	3 (30.00%)	1 (50.00%)	66 (31.88%)
<b>Total</b>	<b>104 (100.00%)</b>	<b>5 (100.00%)</b>	<b>84 (100.00%)</b>	<b>2 (100.00%)</b>	<b>10 (100.00%)</b>	<b>2 (100.00%)</b>	<b>207 (100.00%)</b>

\*\* Includes Aged Out Juveniles and Pending Records

Special Education Services

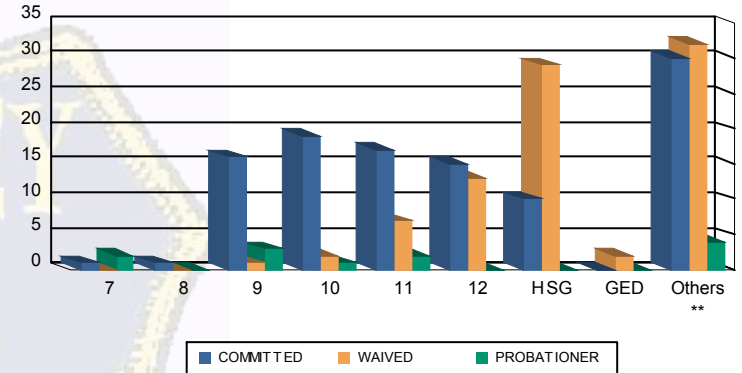
Yes	50 (48.08%)	4 (80.00%)	32 (38.10%)	2 (100.00%)	7 (70.00%)	0 0.00%	95 (45.89%)
No	43 (41.35%)	1 (20.00%)	50 (59.52%)	0 0.00%	3 (30.00%)	1 (50.00%)	98 (47.34%)
Pending	11 (10.58%)	0 0.00%	2 (2.38%)	0 0.00%	0 0.00%	1 (50.00%)	14 (6.76%)
<b>Total</b>	<b>104 (100.00%)</b>	<b>5 (100.00%)</b>	<b>84 (100.00%)</b>	<b>2 (100.00%)</b>	<b>10 (100.00%)</b>	<b>2 (100.00%)</b>	<b>207 (100.00%)</b>

Offense Categories

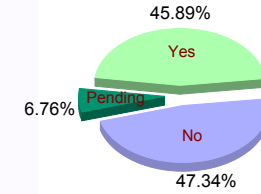
Drug	49 (6.76%)	2 (7.69%)	8 (5.00%)	0 0.00%	1 (2.70%)	0 0.00%	60 (6.30%)
Persons	216 (29.79%)	8 (30.77%)	90 (56.25%)	2 (100.00%)	8 (21.62%)	2 (100.00%)	326 (34.24%)
Property	117 (16.14%)	4 (15.38%)	15 (9.38%)	0 0.00%	4 (10.81%)	0 0.00%	140 (14.71%)
Public Order	81 (11.17%)	3 (11.54%)	10 (6.25%)	0 0.00%	6 (16.22%)	0 0.00%	100 (10.50%)
VOP	150 (20.69%)	6 (23.08%)	17 (10.63%)	0 0.00%	10 (27.03%)	0 0.00%	183 (19.22%)
Weapons	110 (15.17%)	3 (11.54%)	20 (12.50%)	0 0.00%	7 (18.92%)	0 0.00%	140 (14.71%)
Others Offenses	2 (0.28%)	0 0.00%	0 0.00%	0 0.00%	1 (2.70%)	0 0.00%	3 (0.32%)
<b>Total *</b>	<b>725 (100.00%)</b>	<b>26 (100.00%)</b>	<b>160 (100.00%)</b>	<b>2 (100.00%)</b>	<b>37 (100.00%)</b>	<b>2 (100.00%)</b>	<b>952 (100.00%)</b>

\* Juveniles may have multiple offenses

Current Grade



Special Education



Offense Categories

