



Juvenile Demographics and Statistics

Race/ Ethnicity	COMMITTED		WAIVED		PROBATIONER		AFTERCARE		Total									
	MALE	FEMALE	MALE	FEMALE	MALE	FEMALE	MALE	FEMALE										
BLACK	73	71.57%	3	60.00%	45	46.39%	2	100.00%	14	66.67%	2	100.00%	72	64.86%	3	75.00%	214	62.21%
HISPANIC	20	19.61%	0	0.00%	35	36.08%	0	0.00%	2	9.52%	0	0.00%	30	27.03%	0	0.00%	87	25.29%
WHITE	5	4.90%	2	40.00%	14	14.43%	0	0.00%	3	14.29%	0	0.00%	8	7.21%	1	25.00%	33	9.59%
Others	4	3.92%	0	0.00%	3	3.09%	0	0.00%	2	9.52%	0	0.00%	1	0.90%	0	0.00%	10	2.91%
Total	102	100.00%	5	100.00%	97	100.00%	2	100.00%	21	100.00%	2	100.00%	111	100.00%	4	100.00%	344	100.00%

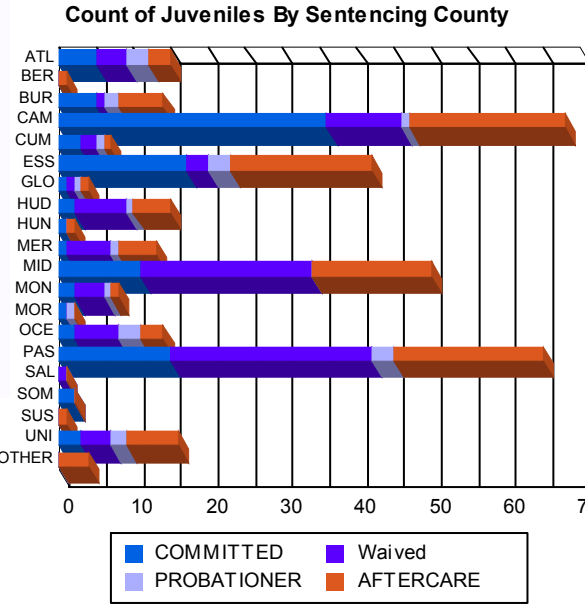
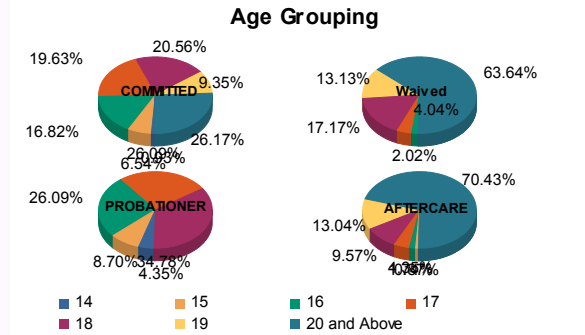
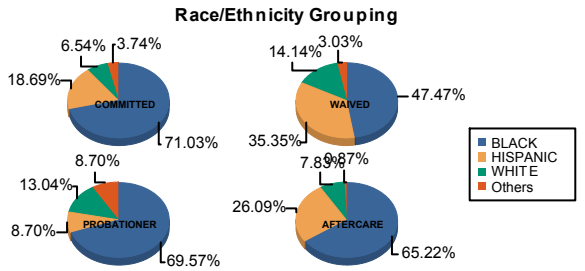
Age

14	1	0.98%	0	0.00%	0	0.00%	0	0.00%	1	4.76%	0	0.00%	0	0.00%	0	0.00%	2	0.58%
15	6	5.88%	1	20.00%	0	0.00%	0	0.00%	1	4.76%	1	50.00%	1	0.90%	0	0.00%	10	2.91%
16	17	16.67%	1	20.00%	2	2.06%	0	0.00%	6	28.57%	0	0.00%	2	1.80%	0	0.00%	28	8.14%
17	19	18.63%	2	40.00%	4	4.12%	0	0.00%	5	23.81%	1	50.00%	5	4.50%	0	0.00%	36	10.47%
18	21	20.59%	1	20.00%	16	16.49%	1	50.00%	8	38.10%	0	0.00%	10	9.01%	1	25.00%	58	16.86%
19	10	9.80%	0	0.00%	13	13.40%	0	0.00%	0	0.00%	0	0.00%	15	13.51%	0	0.00%	38	11.05%
20 and Above	28	27.45%	0	0.00%	62	63.92%	1	50.00%	0	0.00%	0	0.00%	78	70.27%	3	75.00%	172	50.00%
Total	102	100.00%	5	100.00%	97	100.00%	2	100.00%	21	100.00%	2	100.00%	111	100.00%	4	100.00%	344	100.00%

Average Age	18.62	16.60	19.99	20.00	16.86	16.00	21.74	22.00	19.91
-------------	-------	-------	-------	-------	-------	-------	-------	-------	-------

Sentencing County

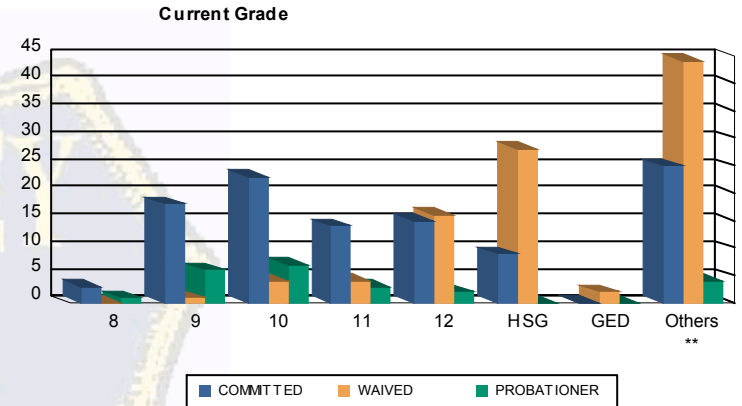
ATL	5	4.90%	0	0.00%	4	4.12%	0	0.00%	3	14.29%	0	0.00%	3	2.70%	0	0.00%	15	4.36%
BER	0	0.00%	0	0.00%	0	0.00%	0	0.00%	0	0.00%	0	0.00%	1	0.90%	0	0.00%	1	0.29%
BUR	5	4.90%	0	0.00%	1	1.03%	0	0.00%	2	9.52%	0	0.00%	6	5.41%	0	0.00%	14	4.07%
CAM	33	32.35%	3	60.00%	8	8.25%	2	100.00%	0	0.00%	1	50.00%	19	17.12%	2	50.00%	68	19.77%
CUM	3	2.94%	0	0.00%	2	2.06%	0	0.00%	1	4.76%	0	0.00%	1	0.90%	0	0.00%	7	2.03%
ESS	16	15.69%	1	20.00%	3	3.09%	0	0.00%	3	14.29%	0	0.00%	19	17.12%	0	0.00%	42	12.21%
GLO	1	0.98%	0	0.00%	1	1.03%	0	0.00%	1	4.76%	0	0.00%	1	0.90%	0	0.00%	4	1.16%
HUD	1	0.98%	1	20.00%	7	7.22%	0	0.00%	1	4.76%	0	0.00%	5	4.50%	0	0.00%	15	4.36%
HUN	1	0.98%	0	0.00%	0	0.00%	0	0.00%	0	0.00%	0	0.00%	1	0.90%	0	0.00%	2	0.58%
MER	1	0.98%	0	0.00%	6	6.19%	0	0.00%	1	4.76%	0	0.00%	5	4.50%	0	0.00%	13	3.78%
MID	11	10.78%	0	0.00%	23	23.71%	0	0.00%	0	0.00%	0	0.00%	16	14.41%	0	0.00%	50	14.53%
MON	2	1.96%	0	0.00%	4	4.12%	0	0.00%	1	4.76%	0	0.00%	1	0.90%	0	0.00%	8	2.33%
MOR	1	0.98%	0	0.00%	0	0.00%	0	0.00%	1	4.76%	0	0.00%	0	0.00%	0	0.00%	2	0.58%
OCE	2	1.96%	0	0.00%	6	6.19%	0	0.00%	3	14.29%	0	0.00%	3	2.70%	0	0.00%	14	4.07%
PAS	15	14.71%	0	0.00%	27	27.84%	0	0.00%	2	9.52%	1	50.00%	19	17.12%	1	25.00%	65	18.90%
SAL	0	0.00%	0	0.00%	1	1.03%	0	0.00%	0	0.00%	0	0.00%	0	0.00%	0	0.00%	1	0.29%
SOM	2	1.96%	0	0.00%	0	0.00%	0	0.00%	0	0.00%	0	0.00%	0	0.00%	0	0.00%	2	0.58%
SUS	0	0.00%	0	0.00%	0	0.00%	0	0.00%	0	0.00%	0	0.00%	1	0.90%	0	0.00%	1	0.29%
UNI	3	2.94%	0	0.00%	4	4.12%	0	0.00%	2	9.52%	0	0.00%	6	5.41%	1	25.00%	16	4.65%
OTHER	0	0.00%	0	0.00%	0	0.00%	0	0.00%	0	0.00%	0	0.00%	4	3.60%	0	0.00%	4	1.16%
Total	102	100.00%	5	100.00%	97	100.00%	2	100.00%	21	100.00%	2	100.00%	111	100.00%	4	100.00%	344	100.00%





Juvenile Demographics and Statistics

Current Grade	COMMITTED		WAIVED		PROBATIONER		Total
	MALE	FEMALE	MALE	FEMALE	MALE	FEMALE	
8	2 (1.96%)	1 (20.00%)	0 (0.00%)	0 (0.00%)	1 (4.76%)	0 (0.00%)	4 (1.75%)
9	18 (17.65%)	0 (0.00%)	1 (1.03%)	0 (0.00%)	5 (23.81%)	1 (50.00%)	25 (10.92%)
10	22 (21.57%)	1 (20.00%)	4 (4.12%)	0 (0.00%)	7 (33.33%)	0 (0.00%)	34 (14.85%)
11	12 (11.76%)	2 (40.00%)	3 (3.09%)	1 (50.00%)	2 (9.52%)	1 (50.00%)	21 (9.17%)
12	14 (13.73%)	1 (20.00%)	16 (16.49%)	0 (0.00%)	2 (9.52%)	0 (0.00%)	33 (14.41%)
HSG	9 (8.82%)	0 (0.00%)	27 (27.84%)	1 (50.00%)	0 (0.00%)	0 (0.00%)	37 (16.16%)
GED	0 (0.00%)	0 (0.00%)	2 (2.06%)	0 (0.00%)	0 (0.00%)	0 (0.00%)	2 (0.87%)
Others **	25 (24.51%)	0 (0.00%)	44 (45.36%)	0 (0.00%)	4 (19.05%)	0 (0.00%)	73 (31.88%)
Total	102 (100.00%)	5 (100.00%)	97 (100.00%)	2 (100.00%)	21 (100.00%)	2 (100.00%)	229 (100.00%)

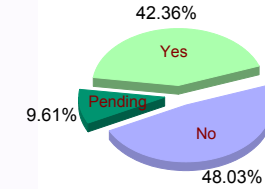


** Includes Aged Out Juveniles and Pending Records

Special Education Services

Yes	45 (44.12%)	5 (100.00%)	36 (37.11%)	2 (100.00%)	9 (42.86%)	0 (0.00%)	97 (42.36%)
No	47 (46.08%)	0 (0.00%)	52 (53.61%)	0 (0.00%)	9 (42.86%)	2 (100.00%)	110 (48.03%)
Pending	10 (9.80%)	0 (0.00%)	9 (9.28%)	0 (0.00%)	3 (14.29%)	0 (0.00%)	22 (9.61%)
Total	102 (100.00%)	5 (100.00%)	97 (100.00%)	2 (100.00%)	21 (100.00%)	2 (100.00%)	229 (100.00%)

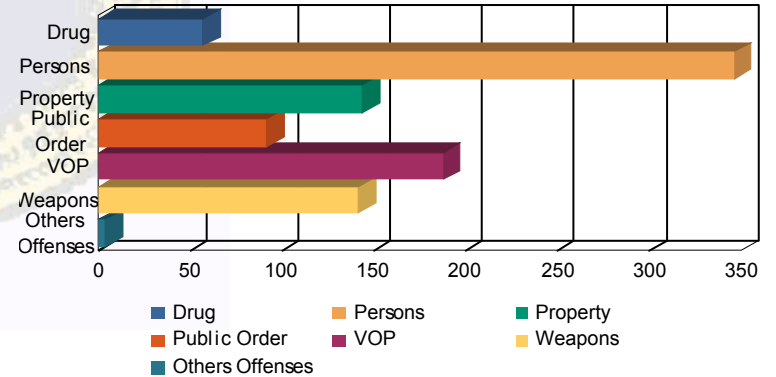
Special Education



Offense Categories

Drug	43 (6.18%)	1 (5.00%)	10 (5.29%)	0 (0.00%)	3 (4.92%)	0 (0.00%)	57 (5.86%)
Persons	214 (30.75%)	8 (40.00%)	104 (55.03%)	2 (100.00%)	15 (24.59%)	3 (60.00%)	346 (35.56%)
Property	114 (16.38%)	2 (10.00%)	18 (9.52%)	0 (0.00%)	9 (14.75%)	1 (20.00%)	144 (14.80%)
Public Order	72 (10.34%)	2 (10.00%)	12 (6.35%)	0 (0.00%)	6 (9.84%)	0 (0.00%)	92 (9.46%)
VOP	147 (21.12%)	4 (20.00%)	21 (11.11%)	0 (0.00%)	15 (24.59%)	1 (20.00%)	188 (19.32%)
Weapons	104 (14.94%)	3 (15.00%)	24 (12.70%)	0 (0.00%)	11 (18.03%)	0 (0.00%)	142 (14.59%)
Others Offenses	2 (0.29%)	0 (0.00%)	0 (0.00%)	0 (0.00%)	2 (3.28%)	0 (0.00%)	4 (0.41%)
Total *	696 (100.00%)	20 (100.00%)	189 (100.00%)	2 (100.00%)	61 (100.00%)	5 (100.00%)	973 (100.00%)

Offense Categories



* Juveniles may have multiple offenses