



Juvenile Demographics and Statistics

Race/ Ethnicity	COMMITTED		WAIVED		PROBATIONER		AFTERCARE		Total									
	MALE	FEMALE	MALE	FEMALE	MALE	FEMALE	MALE	FEMALE										
BLACK	71	71.00%	2	50.00%	45	45.92%	2	100.00%	12	60.00%	1	100.00%	70	66.67%	4	80.00%	207	61.79%
HISPANIC	21	21.00%	0	0.00%	36	36.73%	0	0.00%	3	15.00%	0	0.00%	26	24.76%	0	0.00%	86	25.67%
WHITE	5	5.00%	2	50.00%	14	14.29%	0	0.00%	3	15.00%	0	0.00%	8	7.62%	1	20.00%	33	9.85%
Others	3	3.00%	0	0.00%	3	3.06%	0	0.00%	2	10.00%	0	0.00%	1	0.95%	0	0.00%	9	2.69%
Total	100	100.00%	4	100.00%	98	100.00%	2	100.00%	20	100.00%	1	100.00%	105	100.00%	5	100.00%	335	100.00%

Age

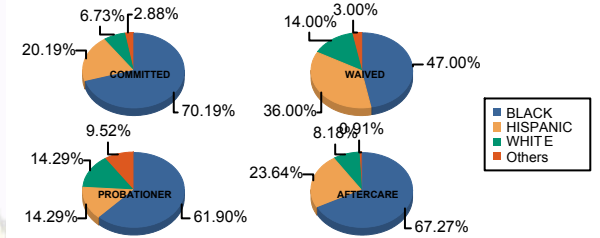
14	1	1.00%	0	0.00%	0	0.00%	0	0.00%	1	5.00%	0	0.00%	0	0.00%	0	0.00%	2	0.60%
15	6	6.00%	1	25.00%	0	0.00%	0	0.00%	1	5.00%	0	0.00%	1	0.95%	0	0.00%	9	2.69%
16	16	16.00%	0	0.00%	1	1.02%	0	0.00%	5	25.00%	0	0.00%	1	0.95%	1	20.00%	24	7.16%
17	20	20.00%	2	50.00%	5	5.10%	0	0.00%	4	20.00%	1	100.00%	5	4.76%	0	0.00%	37	11.04%
18	19	19.00%	1	25.00%	18	18.37%	1	50.00%	9	45.00%	0	0.00%	9	8.57%	1	20.00%	58	17.31%
19	10	10.00%	0	0.00%	12	12.24%	0	0.00%	0	0.00%	0	0.00%	10	9.52%	0	0.00%	32	9.55%
20 and Above	28	28.00%	0	0.00%	62	63.27%	1	50.00%	0	0.00%	0	0.00%	79	75.24%	3	60.00%	173	51.64%
Total	100	100.00%	4	100.00%	98	100.00%	2	100.00%	20	100.00%	1	100.00%	105	100.00%	5	100.00%	335	100.00%

Average Age	18.65	16.75	20.01	20.00	16.95	17.00	21.88	21.00	19.97
-------------	-------	-------	-------	-------	-------	-------	-------	-------	-------

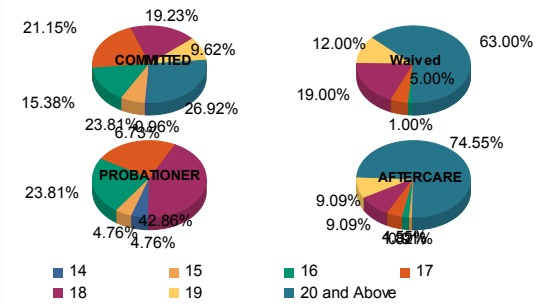
Sentencing County

ATL	5	5.00%	0	0.00%	4	4.08%	0	0.00%	2	10.00%	0	0.00%	2	1.90%	0	0.00%	13	3.88%
BER	0	0.00%	0	0.00%	0	0.00%	0	0.00%	0	0.00%	0	0.00%	1	0.95%	0	0.00%	1	0.30%
BUR	4	4.00%	0	0.00%	1	1.02%	0	0.00%	2	10.00%	0	0.00%	5	4.76%	0	0.00%	12	3.58%
CAM	33	33.00%	3	75.00%	8	8.16%	2	100.00%	0	0.00%	0	0.00%	18	17.14%	2	40.00%	66	19.70%
CUM	3	3.00%	0	0.00%	2	2.04%	0	0.00%	2	10.00%	0	0.00%	0	0.00%	0	0.00%	7	2.09%
ESS	16	16.00%	0	0.00%	3	3.06%	0	0.00%	1	5.00%	0	0.00%	20	19.05%	1	20.00%	41	12.24%
GLO	1	1.00%	0	0.00%	1	1.02%	0	0.00%	1	5.00%	0	0.00%	1	0.95%	0	0.00%	4	1.19%
HUD	1	1.00%	1	25.00%	7	7.14%	0	0.00%	1	5.00%	0	0.00%	5	4.76%	0	0.00%	15	4.48%
HUN	1	1.00%	0	0.00%	0	0.00%	0	0.00%	0	0.00%	0	0.00%	1	0.95%	0	0.00%	2	0.60%
MER	1	1.00%	0	0.00%	6	6.12%	0	0.00%	1	5.00%	0	0.00%	5	4.76%	0	0.00%	13	3.88%
MID	11	11.00%	0	0.00%	24	24.49%	0	0.00%	0	0.00%	0	0.00%	15	14.29%	0	0.00%	50	14.93%
MON	2	2.00%	0	0.00%	5	5.10%	0	0.00%	2	10.00%	0	0.00%	1	0.95%	0	0.00%	10	2.99%
MOR	1	1.00%	0	0.00%	0	0.00%	0	0.00%	1	5.00%	0	0.00%	0	0.00%	0	0.00%	2	0.60%
OCE	2	2.00%	0	0.00%	5	5.10%	0	0.00%	3	15.00%	0	0.00%	3	2.86%	0	0.00%	13	3.88%
PAS	14	14.00%	0	0.00%	27	27.55%	0	0.00%	2	10.00%	1	100.00%	15	14.29%	1	20.00%	60	17.91%
SAL	0	0.00%	0	0.00%	1	1.02%	0	0.00%	0	0.00%	0	0.00%	0	0.00%	0	0.00%	1	0.30%
SOM	2	2.00%	0	0.00%	0	0.00%	0	0.00%	0	0.00%	0	0.00%	0	0.00%	0	0.00%	2	0.60%
SUS	0	0.00%	0	0.00%	0	0.00%	0	0.00%	0	0.00%	0	0.00%	1	0.95%	0	0.00%	1	0.30%
UNI	3	3.00%	0	0.00%	4	4.08%	0	0.00%	2	10.00%	0	0.00%	7	6.67%	1	20.00%	17	5.07%
OTHER	0	0.00%	0	0.00%	0	0.00%	0	0.00%	0	0.00%	0	0.00%	5	4.76%	0	0.00%	5	1.49%
Total	100	100.00%	4	100.00%	98	100.00%	2	100.00%	20	100.00%	1	100.00%	105	100.00%	5	100.00%	335	100.00%

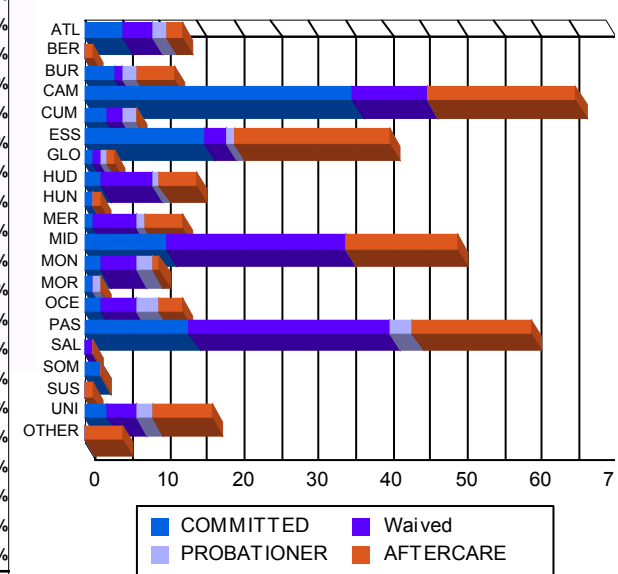
Race/Ethnicity Grouping



Age Grouping



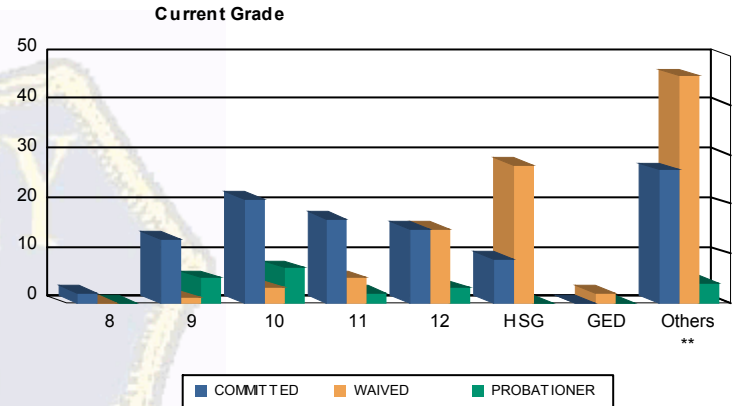
Count of Juveniles By Sentencing County





Juvenile Demographics and Statistics

Current Grade	COMMITTED		WAIVED		PROBATIONER		Total
	MALE	FEMALE	MALE	FEMALE	MALE	FEMALE	
8	1 (1.00%)	1 (25.00%)	0 (0.00%)	0 (0.00%)	0 (0.00%)	0 (0.00%)	2 (0.89%)
9	13 (13.00%)	0 (0.00%)	1 (1.02%)	0 (0.00%)	5 (25.00%)	0 (0.00%)	19 (8.44%)
10	21 (21.00%)	0 (0.00%)	3 (3.06%)	0 (0.00%)	7 (35.00%)	0 (0.00%)	31 (13.78%)
11	15 (15.00%)	2 (50.00%)	5 (5.10%)	0 (0.00%)	1 (5.00%)	1 (100.00%)	24 (10.67%)
12	14 (14.00%)	1 (25.00%)	14 (14.29%)	1 (50.00%)	3 (15.00%)	0 (0.00%)	33 (14.67%)
HSG	9 (9.00%)	0 (0.00%)	27 (27.55%)	1 (50.00%)	0 (0.00%)	0 (0.00%)	37 (16.44%)
GED	0 (0.00%)	0 (0.00%)	2 (2.04%)	0 (0.00%)	0 (0.00%)	0 (0.00%)	2 (0.89%)
Others **	27 (27.00%)	0 (0.00%)	46 (46.94%)	0 (0.00%)	4 (20.00%)	0 (0.00%)	77 (34.22%)
Total	100 (100.00%)	4 (100.00%)	98 (100.00%)	2 (100.00%)	20 (100.00%)	1 (100.00%)	225 (100.00%)

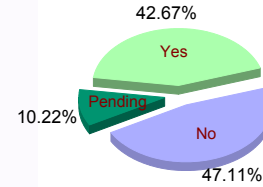


** Includes Aged Out Juveniles and Pending Records

Special Education Services

Yes	44 (44.00%)	4 (100.00%)	37 (37.76%)	2 (100.00%)	9 (45.00%)	0 (0.00%)	96 (42.67%)
No	45 (45.00%)	0 (0.00%)	52 (53.06%)	0 (0.00%)	8 (40.00%)	1 (100.00%)	106 (47.11%)
Pending	11 (11.00%)	0 (0.00%)	9 (9.18%)	0 (0.00%)	3 (15.00%)	0 (0.00%)	23 (10.22%)
Total	100 (100.00%)	4 (100.00%)	98 (100.00%)	2 (100.00%)	20 (100.00%)	1 (100.00%)	225 (100.00%)

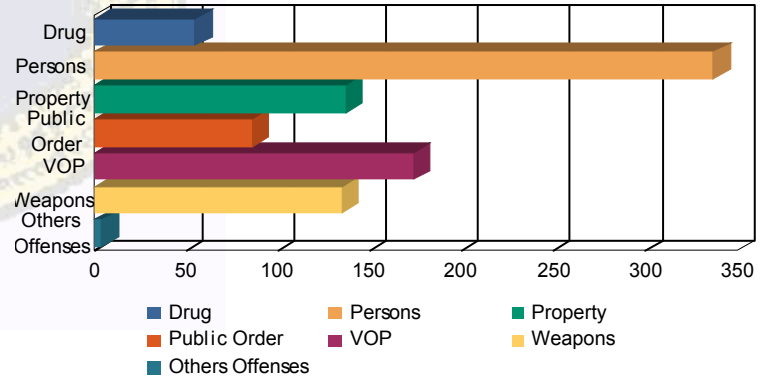
Special Education



Offense Categories

Drug	42 (6.35%)	1 (5.00%)	10 (5.10%)	0 (0.00%)	2 (4.17%)	0 (0.00%)	55 (5.93%)
Persons	207 (31.32%)	8 (40.00%)	106 (54.08%)	2 (100.00%)	13 (27.08%)	1 (100.00%)	337 (36.31%)
Property	110 (16.64%)	2 (10.00%)	18 (9.18%)	0 (0.00%)	7 (14.58%)	0 (0.00%)	137 (14.76%)
Public Order	68 (10.29%)	2 (10.00%)	12 (6.12%)	0 (0.00%)	4 (8.33%)	0 (0.00%)	86 (9.27%)
VOP	137 (20.73%)	4 (20.00%)	23 (11.73%)	0 (0.00%)	10 (20.83%)	0 (0.00%)	174 (18.75%)
Weapons	95 (14.37%)	3 (15.00%)	27 (13.78%)	0 (0.00%)	10 (20.83%)	0 (0.00%)	135 (14.55%)
Others Offenses	2 (0.30%)	0 (0.00%)	0 (0.00%)	0 (0.00%)	2 (4.17%)	0 (0.00%)	4 (0.43%)
Total *	661 (100.00%)	20 (100.00%)	196 (100.00%)	2 (100.00%)	48 (100.00%)	1 (100.00%)	928 (100.00%)

Offense Categories



* Juveniles may have multiple offenses