



Juvenile Demographics and Statistics

Race/ Ethnicity	COMMITTED		WAIVED		PROBATIONER		AFTERCARE		Total									
	MALE	FEMALE	MALE	FEMALE	MALE	FEMALE	MALE	FEMALE										
BLACK	69	70.41%	2	50.00%	47	47.00%	2	100.00%	12	60.00%	1	100.00%	70	68.63%	4	80.00%	207	62.35%
HISPANIC	21	21.43%	0	0.00%	36	36.00%	0	0.00%	3	15.00%	0	0.00%	24	23.53%	0	0.00%	84	25.30%
WHITE	5	5.10%	2	50.00%	14	14.00%	0	0.00%	3	15.00%	0	0.00%	7	6.86%	1	20.00%	32	9.64%
Others	3	3.06%	0	0.00%	3	3.00%	0	0.00%	2	10.00%	0	0.00%	1	0.98%	0	0.00%	9	2.71%
Total	98	100.00%	4	100.00%	100	100.00%	2	100.00%	20	100.00%	1	100.00%	102	100.00%	5	100.00%	332	100.00%

Age

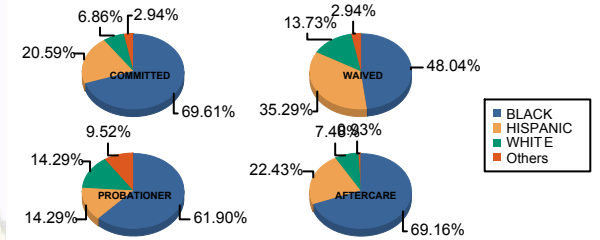
14	1	1.02%	0	0.00%	0	0.00%	0	0.00%	1	5.00%	0	0.00%	0	0.00%	0	0.00%	2	0.60%
15	5	5.10%	1	25.00%	0	0.00%	0	0.00%	1	5.00%	0	0.00%	2	1.96%	0	0.00%	9	2.71%
16	16	16.33%	0	0.00%	1	1.00%	0	0.00%	5	25.00%	0	0.00%	1	0.98%	1	20.00%	24	7.23%
17	20	20.41%	2	50.00%	5	5.00%	0	0.00%	4	20.00%	1	100.00%	4	3.92%	0	0.00%	36	10.84%
18	18	18.37%	1	25.00%	19	19.00%	1	50.00%	8	40.00%	0	0.00%	9	8.82%	1	20.00%	57	17.17%
19	11	11.22%	0	0.00%	13	13.00%	0	0.00%	1	5.00%	0	0.00%	10	9.80%	0	0.00%	35	10.54%
20 and Above	27	27.55%	0	0.00%	62	62.00%	1	50.00%	0	0.00%	0	0.00%	76	74.51%	3	60.00%	169	50.90%
Total	98	100.00%	4	100.00%	100	100.00%	2	100.00%	20	100.00%	1	100.00%	102	100.00%	5	100.00%	332	100.00%

Average Age	18.67	16.75	19.98	20.00	17.00	17.00	21.89	21.00	19.97
-------------	-------	-------	-------	-------	-------	-------	-------	-------	-------

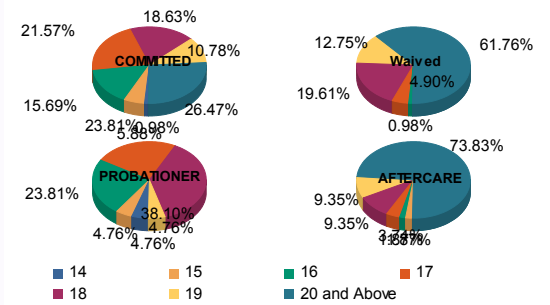
Sentencing County

ATL	5	5.10%	0	0.00%	4	4.00%	0	0.00%	2	10.00%	0	0.00%	1	0.98%	0	0.00%	12	3.61%
BER	0	0.00%	0	0.00%	0	0.00%	0	0.00%	0	0.00%	0	0.00%	1	0.98%	0	0.00%	1	0.30%
BUR	4	4.08%	0	0.00%	1	1.00%	0	0.00%	2	10.00%	0	0.00%	5	4.90%	0	0.00%	12	3.61%
CAM	32	32.65%	3	75.00%	8	8.00%	2	100.00%	0	0.00%	0	0.00%	19	18.63%	2	40.00%	66	19.88%
CUM	3	3.06%	0	0.00%	2	2.00%	0	0.00%	2	10.00%	0	0.00%	0	0.00%	0	0.00%	7	2.11%
ESS	15	15.31%	0	0.00%	3	3.00%	0	0.00%	1	5.00%	0	0.00%	21	20.59%	1	20.00%	41	12.35%
GLO	1	1.02%	0	0.00%	1	1.00%	0	0.00%	1	5.00%	0	0.00%	1	0.98%	0	0.00%	4	1.20%
HUD	1	1.02%	1	25.00%	7	7.00%	0	0.00%	1	5.00%	0	0.00%	5	4.90%	0	0.00%	15	4.52%
HUN	1	1.02%	0	0.00%	0	0.00%	0	0.00%	0	0.00%	0	0.00%	1	0.98%	0	0.00%	2	0.60%
MER	1	1.02%	0	0.00%	6	6.00%	0	0.00%	1	5.00%	0	0.00%	4	3.92%	0	0.00%	12	3.61%
MID	11	11.22%	0	0.00%	24	24.00%	0	0.00%	0	0.00%	0	0.00%	14	13.73%	0	0.00%	49	14.76%
MON	2	2.04%	0	0.00%	5	5.00%	0	0.00%	2	10.00%	0	0.00%	1	0.98%	0	0.00%	10	3.01%
MOR	1	1.02%	0	0.00%	0	0.00%	0	0.00%	1	5.00%	0	0.00%	0	0.00%	0	0.00%	2	0.60%
OCE	2	2.04%	0	0.00%	5	5.00%	0	0.00%	3	15.00%	0	0.00%	3	2.94%	0	0.00%	13	3.92%
PAS	14	14.29%	0	0.00%	29	29.00%	0	0.00%	2	10.00%	1	100.00%	13	12.75%	1	20.00%	60	18.07%
SAL	0	0.00%	0	0.00%	1	1.00%	0	0.00%	0	0.00%	0	0.00%	0	0.00%	0	0.00%	1	0.30%
SOM	2	2.04%	0	0.00%	0	0.00%	0	0.00%	0	0.00%	0	0.00%	0	0.00%	0	0.00%	2	0.60%
SUS	0	0.00%	0	0.00%	0	0.00%	0	0.00%	0	0.00%	0	0.00%	1	0.98%	0	0.00%	1	0.30%
UNI	3	3.06%	0	0.00%	4	4.00%	0	0.00%	2	10.00%	0	0.00%	7	6.86%	1	20.00%	17	5.12%
OTHER	0	0.00%	0	0.00%	0	0.00%	0	0.00%	0	0.00%	0	0.00%	5	4.90%	0	0.00%	5	1.51%
Total	98	100.00%	4	100.00%	100	100.00%	2	100.00%	20	100.00%	1	100.00%	102	100.00%	5	100.00%	332	100.00%

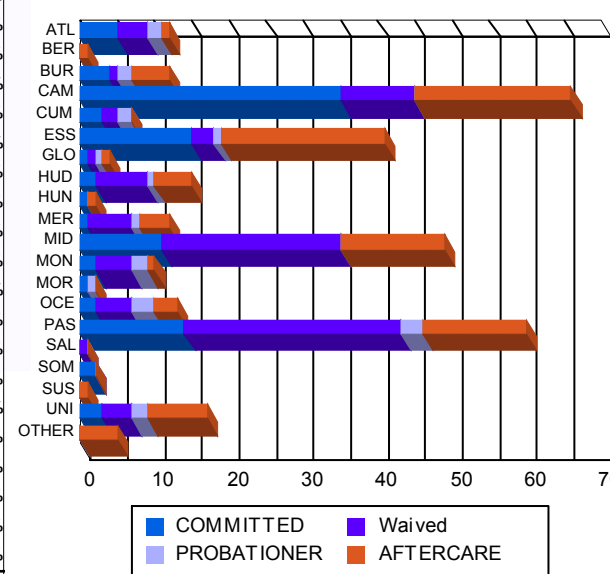
Race/Ethnicity Grouping



Age Grouping



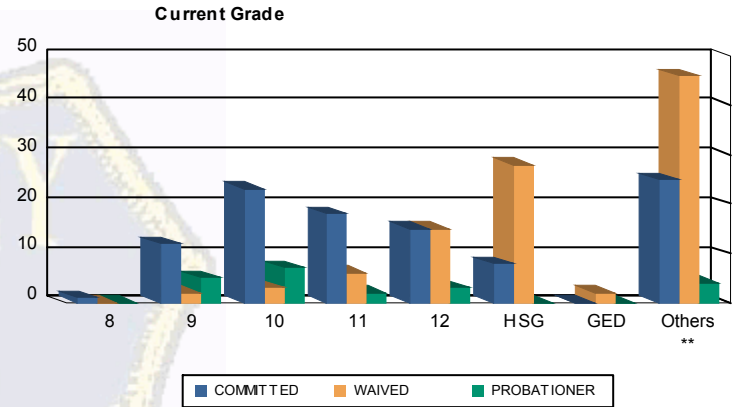
Count of Juveniles By Sentencing County





Juvenile Demographics and Statistics

Current Grade	COMMITTED		WAIVED		PROBATIONER		Total
	MALE	FEMALE	MALE	FEMALE	MALE	FEMALE	
8	1 (1.02%)	0 0.00%	0 0.00%	0 0.00%	0 0.00%	0 0.00%	1 (0.44%)
9	11 (11.22%)	1 (25.00%)	2 (2.00%)	0 0.00%	5 (25.00%)	0 0.00%	19 (8.44%)
10	23 (23.47%)	0 0.00%	3 (3.00%)	0 0.00%	7 (35.00%)	0 0.00%	33 (14.67%)
11	16 (16.33%)	2 (50.00%)	6 (6.00%)	0 0.00%	1 (5.00%)	1 (100.00%)	26 (11.56%)
12	14 (14.29%)	1 (25.00%)	14 (14.00%)	1 (50.00%)	3 (15.00%)	0 0.00%	33 (14.67%)
HSG	8 (8.16%)	0 0.00%	27 (27.00%)	1 (50.00%)	0 0.00%	0 0.00%	36 (16.00%)
GED	0 0.00%	0 0.00%	2 (2.00%)	0 0.00%	0 0.00%	0 0.00%	2 (0.89%)
Others **	25 (25.51%)	0 0.00%	46 (46.00%)	0 0.00%	4 (20.00%)	0 0.00%	75 (33.33%)
Total	98 (100.00%)	4 (100.00%)	100 (100.00%)	2 (100.00%)	20 (100.00%)	1 (100.00%)	225 (100.00%)

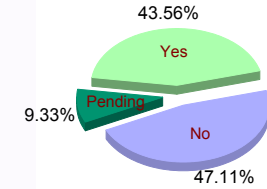


** Includes Aged Out Juveniles and Pending Records

Special Education Services

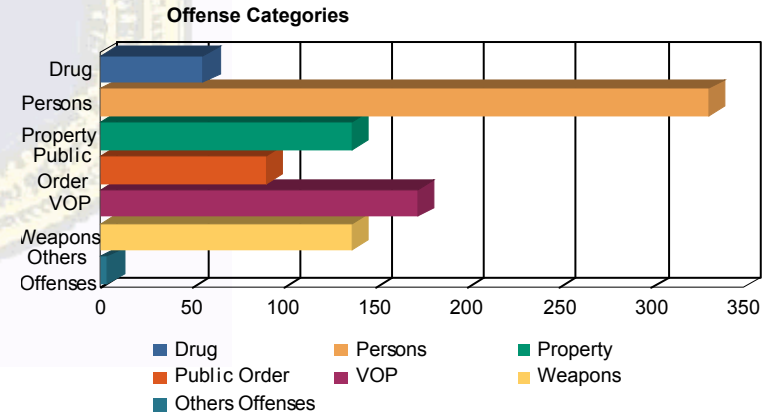
Yes	45 (45.92%)	4 (100.00%)	38 (38.00%)	2 (100.00%)	9 (45.00%)	0 0.00%	98 (43.56%)
No	44 (44.90%)	0 0.00%	53 (53.00%)	0 0.00%	8 (40.00%)	1 (100.00%)	106 (47.11%)
Pending	9 (9.18%)	0 0.00%	9 (9.00%)	0 0.00%	3 (15.00%)	0 0.00%	21 (9.33%)
Total	98 (100.00%)	4 (100.00%)	100 (100.00%)	2 (100.00%)	20 (100.00%)	1 (100.00%)	225 (100.00%)

Special Education



Offense Categories

Drug	42 (6.46%)	1 (5.00%)	10 (5.10%)	0 0.00%	3 (5.08%)	0 0.00%	56 (6.03%)
Persons	201 (30.92%)	8 (40.00%)	106 (54.08%)	2 (100.00%)	13 (22.03%)	1 (100.00%)	331 (35.67%)
Property	108 (16.62%)	2 (10.00%)	18 (9.18%)	0 0.00%	9 (15.25%)	0 0.00%	137 (14.76%)
Public Order	68 (10.46%)	2 (10.00%)	12 (6.12%)	0 0.00%	8 (13.56%)	0 0.00%	90 (9.70%)
VOP	134 (20.62%)	4 (20.00%)	23 (11.73%)	0 0.00%	12 (20.34%)	0 0.00%	173 (18.64%)
Weapons	95 (14.62%)	3 (15.00%)	27 (13.78%)	0 0.00%	12 (20.34%)	0 0.00%	137 (14.76%)
Others Offenses	2 (0.31%)	0 0.00%	0 0.00%	0 0.00%	2 (3.39%)	0 0.00%	4 (0.43%)
Total *	650 (100.00%)	20 (100.00%)	196 (100.00%)	2 (100.00%)	59 (100.00%)	1 (100.00%)	928 (100.00%)



* Juveniles may have multiple offenses