



Juvenile Demographics and Statistics

Race/ Ethnicity	COMMITTED		WAIVED		PROBATIONER		AFTERCARE		Total									
	MALE	FEMALE	MALE	FEMALE	MALE	FEMALE	MALE	FEMALE										
BLACK	62	72.94%	2	50.00%	32	47.06%	1	100.00%	8	57.14%	0	0.00%	65	70.65%	4	80.00%	174	64.44%
HISPANIC	17	20.00%	0	0.00%	24	35.29%	0	0.00%	2	14.29%	1	100.00%	19	20.65%	0	0.00%	63	23.33%
WHITE	6	7.06%	2	50.00%	11	16.18%	0	0.00%	2	14.29%	0	0.00%	7	7.61%	1	20.00%	29	10.74%
Others	0	0.00%	0	0.00%	1	1.47%	0	0.00%	2	14.29%	0	0.00%	1	1.09%	0	0.00%	4	1.48%
Total	85	100.00%	4	100.00%	68	100.00%	1	100.00%	14	100.00%	1	100.00%	92	100.00%	5	100.00%	270	100.00%

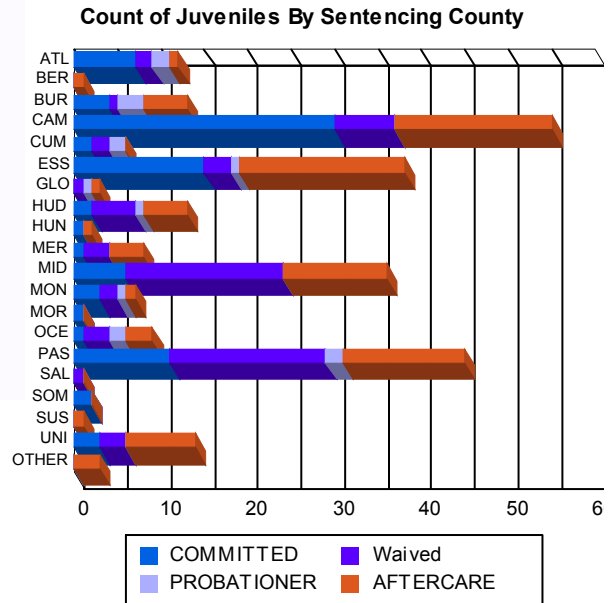
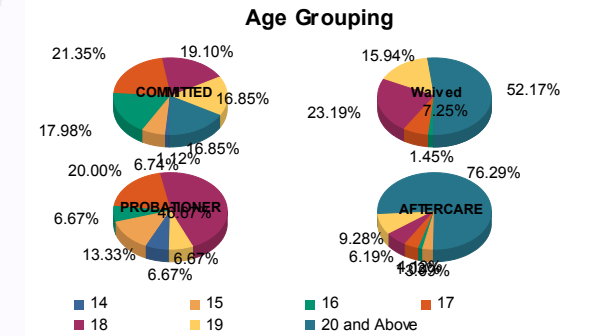
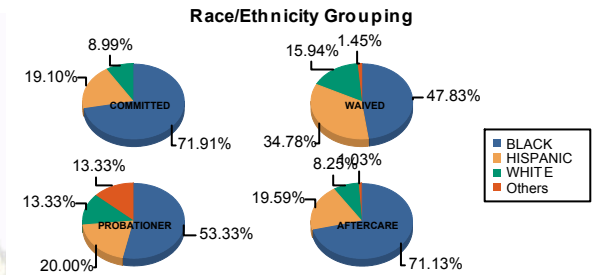
Age

14	1	1.18%	0	0.00%	0	0.00%	0	0.00%	1	7.14%	0	0.00%	0	0.00%	0	0.00%	2	0.74%
15	5	5.88%	1	25.00%	0	0.00%	0	0.00%	2	14.29%	0	0.00%	3	3.26%	0	0.00%	11	4.07%
16	16	18.82%	0	0.00%	1	1.47%	0	0.00%	1	7.14%	0	0.00%	0	0.00%	1	20.00%	19	7.04%
17	17	20.00%	2	50.00%	5	7.35%	0	0.00%	2	14.29%	1	100.00%	4	4.35%	0	0.00%	31	11.48%
18	17	20.00%	0	0.00%	16	23.53%	0	0.00%	7	50.00%	0	0.00%	5	5.43%	1	20.00%	46	17.04%
19	14	16.47%	1	25.00%	10	14.71%	1	100.00%	1	7.14%	0	0.00%	9	9.78%	0	0.00%	36	13.33%
20 and Above	15	17.65%	0	0.00%	36	52.94%	0	0.00%	0	0.00%	0	0.00%	71	77.17%	3	60.00%	125	46.30%
Total	85	100.00%	4	100.00%	68	100.00%	1	100.00%	14	100.00%	1	100.00%	92	100.00%	5	100.00%	270	100.00%

Average Age	18.01	17.00	19.56	19.00	17.07	17.00	22.03	21.00	19.76
-------------	-------	-------	-------	-------	-------	-------	-------	-------	-------

Sentencing County

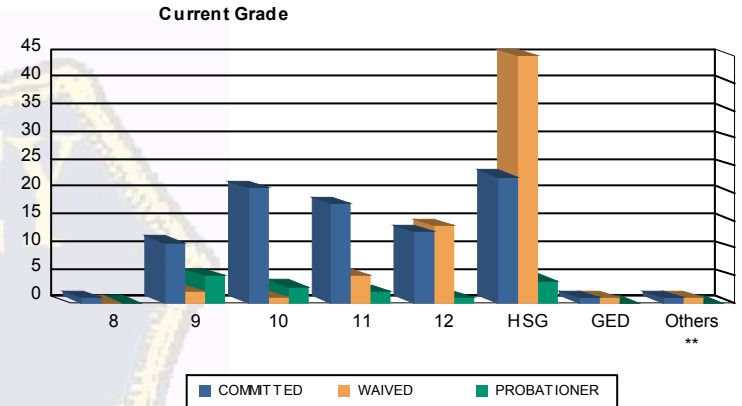
ATL	7	8.24%	0	0.00%	2	2.94%	0	0.00%	2	14.29%	0	0.00%	1	1.09%	0	0.00%	12	4.44%
BER	0	0.00%	0	0.00%	0	0.00%	0	0.00%	0	0.00%	0	0.00%	1	1.09%	0	0.00%	1	0.37%
BUR	4	4.71%	0	0.00%	1	1.47%	0	0.00%	3	21.43%	0	0.00%	5	5.43%	0	0.00%	13	4.81%
CAM	27	31.76%	3	75.00%	6	8.82%	1	100.00%	0	0.00%	0	0.00%	16	17.39%	2	40.00%	55	20.37%
CUM	2	2.35%	0	0.00%	2	2.94%	0	0.00%	2	14.29%	0	0.00%	0	0.00%	0	0.00%	6	2.22%
ESS	15	17.65%	0	0.00%	3	4.41%	0	0.00%	1	7.14%	0	0.00%	18	19.57%	1	20.00%	38	14.07%
GLO	0	0.00%	0	0.00%	1	1.47%	0	0.00%	1	7.14%	0	0.00%	1	1.09%	0	0.00%	3	1.11%
HUD	1	1.18%	1	25.00%	5	7.35%	0	0.00%	1	7.14%	0	0.00%	5	5.43%	0	0.00%	13	4.81%
HUN	1	1.18%	0	0.00%	0	0.00%	0	0.00%	0	0.00%	0	0.00%	1	1.09%	0	0.00%	2	0.74%
MER	1	1.18%	0	0.00%	3	4.41%	0	0.00%	0	0.00%	0	0.00%	4	4.35%	0	0.00%	8	2.96%
MID	6	7.06%	0	0.00%	18	26.47%	0	0.00%	0	0.00%	0	0.00%	12	13.04%	0	0.00%	36	13.33%
MON	3	3.53%	0	0.00%	2	2.94%	0	0.00%	1	7.14%	0	0.00%	1	1.09%	0	0.00%	7	2.59%
MOR	1	1.18%	0	0.00%	0	0.00%	0	0.00%	0	0.00%	0	0.00%	0	0.00%	0	0.00%	1	0.37%
OCE	1	1.18%	0	0.00%	3	4.41%	0	0.00%	2	14.29%	0	0.00%	3	3.26%	0	0.00%	9	3.33%
PAS	11	12.94%	0	0.00%	18	26.47%	0	0.00%	1	7.14%	1	100.00%	13	14.13%	1	20.00%	45	16.67%
SAL	0	0.00%	0	0.00%	1	1.47%	0	0.00%	0	0.00%	0	0.00%	0	0.00%	0	0.00%	1	0.37%
SOM	2	2.35%	0	0.00%	0	0.00%	0	0.00%	0	0.00%	0	0.00%	0	0.00%	0	0.00%	2	0.74%
SUS	0	0.00%	0	0.00%	0	0.00%	0	0.00%	0	0.00%	0	0.00%	1	1.09%	0	0.00%	1	0.37%
UNI	3	3.53%	0	0.00%	3	4.41%	0	0.00%	0	0.00%	0	0.00%	7	7.61%	1	20.00%	14	5.19%
OTHER	0	0.00%	0	0.00%	0	0.00%	0	0.00%	0	0.00%	0	0.00%	3	3.26%	0	0.00%	3	1.11%
Total	85	100.00%	4	100.00%	68	100.00%	1	100.00%	14	100.00%	1	100.00%	92	100.00%	5	100.00%	270	100.00%





Juvenile Demographics and Statistics

Current Grade	COMMITTED		WAIVED		PROBATIONER		Total
	MALE	FEMALE	MALE	FEMALE	MALE	FEMALE	
8	1 (1.18%)	0 (0.00%)	0 (0.00%)	0 (0.00%)	0 (0.00%)	0 (0.00%)	1 (0.58%)
9	10 (11.76%)	1 (25.00%)	2 (2.94%)	0 (0.00%)	5 (35.71%)	0 (0.00%)	18 (10.40%)
10	21 (24.71%)	0 (0.00%)	1 (1.47%)	0 (0.00%)	3 (21.43%)	0 (0.00%)	25 (14.45%)
11	17 (20.00%)	1 (25.00%)	5 (7.35%)	0 (0.00%)	1 (7.14%)	1 (100.00%)	25 (14.45%)
12	11 (12.94%)	2 (50.00%)	13 (19.12%)	1 (100.00%)	1 (7.14%)	0 (0.00%)	28 (16.18%)
HSG	23 (27.06%)	0 (0.00%)	45 (66.18%)	0 (0.00%)	4 (28.57%)	0 (0.00%)	72 (41.62%)
GED	1 (1.18%)	0 (0.00%)	1 (1.47%)	0 (0.00%)	0 (0.00%)	0 (0.00%)	2 (1.16%)
Others **	1 (1.18%)	0 (0.00%)	1 (1.47%)	0 (0.00%)	0 (0.00%)	0 (0.00%)	2 (1.16%)
Total	85 (100.00%)	4 (100.00%)	68 (100.00%)	1 (100.00%)	14 (100.00%)	1 (100.00%)	173 (100.00%)

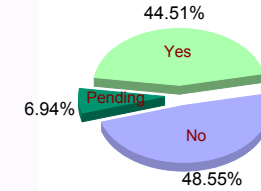


** Includes Aged Out Juveniles and Pending Records

Special Education Services

Yes	41 (48.24%)	4 (100.00%)	26 (38.24%)	1 (100.00%)	5 (35.71%)	0 (0.00%)	77 (44.51%)
No	41 (48.24%)	0 (0.00%)	35 (51.47%)	0 (0.00%)	7 (50.00%)	1 (100.00%)	84 (48.55%)
Pending	3 (3.53%)	0 (0.00%)	7 (10.29%)	0 (0.00%)	2 (14.29%)	0 (0.00%)	12 (6.94%)
Total	85 (100.00%)	4 (100.00%)	68 (100.00%)	1 (100.00%)	14 (100.00%)	1 (100.00%)	173 (100.00%)

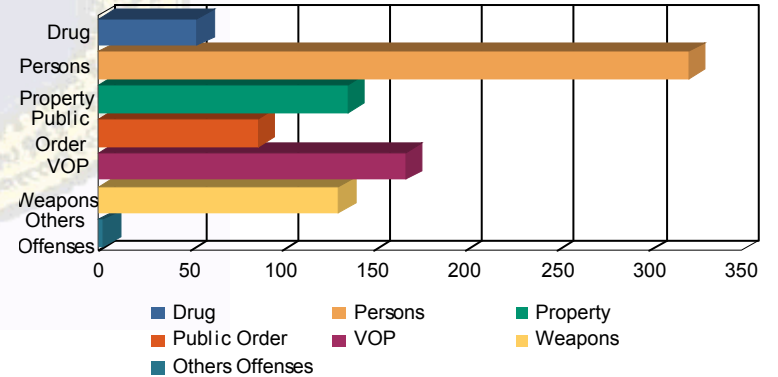
Special Education



Offense Categories

Drug	41 (6.44%)	1 (5.00%)	10 (5.13%)	0 (0.00%)	2 (4.65%)	0 (0.00%)	54 (6.01%)
Persons	197 (30.93%)	8 (40.00%)	105 (53.85%)	2 (100.00%)	9 (20.93%)	0 (0.00%)	321 (35.71%)
Property	106 (16.64%)	2 (10.00%)	18 (9.23%)	0 (0.00%)	9 (20.93%)	1 (50.00%)	136 (15.13%)
Public Order	68 (10.68%)	2 (10.00%)	12 (6.15%)	0 (0.00%)	5 (11.63%)	0 (0.00%)	87 (9.68%)
VOP	130 (20.41%)	4 (20.00%)	23 (11.79%)	0 (0.00%)	9 (20.93%)	1 (50.00%)	167 (18.58%)
Weapons	93 (14.60%)	3 (15.00%)	27 (13.85%)	0 (0.00%)	8 (18.60%)	0 (0.00%)	131 (14.57%)
Others Offenses	2 (0.31%)	0 (0.00%)	0 (0.00%)	0 (0.00%)	1 (2.33%)	0 (0.00%)	3 (0.33%)
Total *	637 (100.00%)	20 (100.00%)	195 (100.00%)	2 (100.00%)	43 (100.00%)	2 (100.00%)	899 (100.00%)

Offense Categories



* Juveniles may have multiple offenses