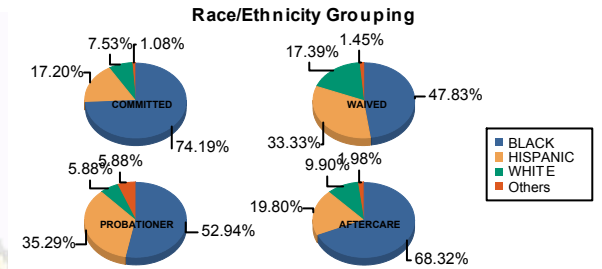




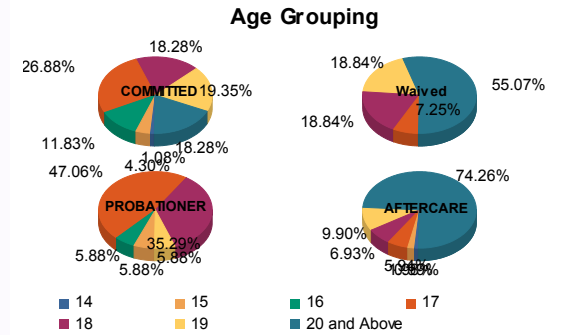
Juvenile Demographics and Statistics

Race/ Ethnicity	COMMITTED		WAIVED		PROBATIONER		AFTERCARE		Total									
	MALE	FEMALE	MALE	FEMALE	MALE	FEMALE	MALE	FEMALE										
BLACK	67	74.44%	2	66.67%	32	47.06%	1	100.00%	9	56.25%	0	0.00%	66	68.75%	3	60.00%	180	64.29%
HISPANIC	16	17.78%	0	0.00%	23	33.82%	0	0.00%	5	31.25%	1	100.00%	20	20.83%	0	0.00%	65	23.21%
WHITE	6	6.67%	1	33.33%	12	17.65%	0	0.00%	1	6.25%	0	0.00%	8	8.33%	2	40.00%	30	10.71%
Others	1	1.11%	0	0.00%	1	1.47%	0	0.00%	1	6.25%	0	0.00%	2	2.08%	0	0.00%	5	1.79%
Total	90	100.00%	3	100.00%	68	100.00%	1	100.00%	16	100.00%	1	100.00%	96	100.00%	5	100.00%	280	100.00%



Age

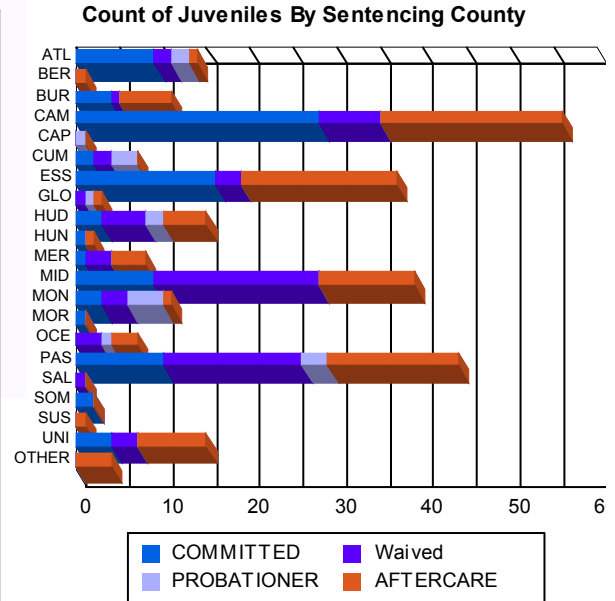
14	1	1.11%	0	0.00%	0	0.00%	0	0.00%	0	0.00%	0	0.00%	1	1.04%	0	0.00%	2	0.71%
15	3	3.33%	1	33.33%	0	0.00%	0	0.00%	1	6.25%	0	0.00%	2	2.08%	0	0.00%	7	2.50%
16	11	12.22%	0	0.00%	0	0.00%	0	0.00%	1	6.25%	0	0.00%	0	0.00%	0	0.00%	12	4.29%
17	24	26.67%	1	33.33%	5	7.35%	0	0.00%	7	43.75%	1	100.00%	6	6.25%	0	0.00%	44	15.71%
18	17	18.89%	0	0.00%	13	19.12%	0	0.00%	6	37.50%	0	0.00%	6	6.25%	1	20.00%	43	15.36%
19	17	18.89%	1	33.33%	12	17.65%	1	100.00%	1	6.25%	0	0.00%	9	9.38%	1	20.00%	42	15.00%
20 and Above	17	18.89%	0	0.00%	38	55.88%	0	0.00%	0	0.00%	0	0.00%	72	75.00%	3	60.00%	130	46.43%
Total	90	100.00%	3	100.00%	68	100.00%	1	100.00%	16	100.00%	1	100.00%	96	100.00%	5	100.00%	280	100.00%



Average Age	18.18	17.00	19.75	19.00	17.31	17.00	21.92	22.00	19.85
-------------	-------	-------	-------	-------	-------	-------	-------	-------	-------

Sentencing County

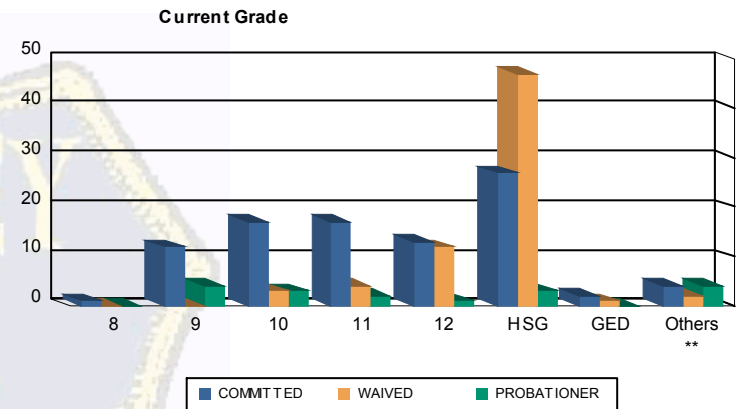
ATL	9	10.00%	0	0.00%	2	2.94%	0	0.00%	2	12.50%	0	0.00%	1	1.04%	0	0.00%	14	5.00%
BER	0	0.00%	0	0.00%	0	0.00%	0	0.00%	0	0.00%	0	0.00%	1	1.04%	0	0.00%	1	0.36%
BUR	4	4.44%	0	0.00%	1	1.47%	0	0.00%	0	0.00%	0	0.00%	6	6.25%	0	0.00%	11	3.93%
CAM	26	28.89%	2	66.67%	6	8.82%	1	100.00%	0	0.00%	0	0.00%	18	18.75%	3	60.00%	56	20.00%
CAP	0	0.00%	0	0.00%	0	0.00%	0	0.00%	1	6.25%	0	0.00%	0	0.00%	0	0.00%	1	0.36%
CUM	2	2.22%	0	0.00%	2	2.94%	0	0.00%	3	18.75%	0	0.00%	0	0.00%	0	0.00%	7	2.50%
ESS	16	17.78%	0	0.00%	3	4.41%	0	0.00%	0	0.00%	0	0.00%	18	18.75%	0	0.00%	37	13.21%
GLO	0	0.00%	0	0.00%	1	1.47%	0	0.00%	1	6.25%	0	0.00%	1	1.04%	0	0.00%	3	1.07%
HUD	2	2.22%	1	33.33%	5	7.35%	0	0.00%	2	12.50%	0	0.00%	5	5.21%	0	0.00%	15	5.36%
HUN	1	1.11%	0	0.00%	0	0.00%	0	0.00%	0	0.00%	0	0.00%	1	1.04%	0	0.00%	2	0.71%
MER	1	1.11%	0	0.00%	3	4.41%	0	0.00%	0	0.00%	0	0.00%	4	4.17%	0	0.00%	8	2.86%
MID	9	10.00%	0	0.00%	19	27.94%	0	0.00%	0	0.00%	0	0.00%	11	11.46%	0	0.00%	39	13.93%
MON	3	3.33%	0	0.00%	3	4.41%	0	0.00%	4	25.00%	0	0.00%	1	1.04%	0	0.00%	11	3.93%
MOR	1	1.11%	0	0.00%	0	0.00%	0	0.00%	0	0.00%	0	0.00%	0	0.00%	0	0.00%	1	0.36%
OCE	0	0.00%	0	0.00%	3	4.41%	0	0.00%	1	6.25%	0	0.00%	3	3.13%	0	0.00%	7	2.50%
PAS	10	11.11%	0	0.00%	16	23.53%	0	0.00%	2	12.50%	1	100.00%	14	14.58%	1	20.00%	44	15.71%
SAL	0	0.00%	0	0.00%	1	1.47%	0	0.00%	0	0.00%	0	0.00%	0	0.00%	0	0.00%	1	0.36%
SOM	2	2.22%	0	0.00%	0	0.00%	0	0.00%	0	0.00%	0	0.00%	0	0.00%	0	0.00%	2	0.71%
SUS	0	0.00%	0	0.00%	0	0.00%	0	0.00%	0	0.00%	0	0.00%	1	1.04%	0	0.00%	1	0.36%
UNI	4	4.44%	0	0.00%	3	4.41%	0	0.00%	0	0.00%	0	0.00%	7	7.29%	1	20.00%	15	5.36%
OTHER	0	0.00%	0	0.00%	0	0.00%	0	0.00%	0	0.00%	0	0.00%	4	4.17%	0	0.00%	4	1.43%
Total	90	100.00%	3	100.00%	68	100.00%	1	100.00%	16	100.00%	1	100.00%	96	100.00%	5	100.00%	280	100.00%





Juvenile Demographics and Statistics

Current Grade	COMMITTED		WAIVED		PROBATIONER		Total
	MALE	FEMALE	MALE	FEMALE	MALE	FEMALE	
8	1 (1.11%)	0 (0.00%)	0 (0.00%)	0 (0.00%)	0 (0.00%)	0 (0.00%)	1 (0.56%)
9	11 (12.22%)	1 (33.33%)	0 (0.00%)	0 (0.00%)	3 (18.75%)	1 (100.00%)	16 (8.94%)
10	17 (18.89%)	0 (0.00%)	3 (4.41%)	0 (0.00%)	3 (18.75%)	0 (0.00%)	23 (12.85%)
11	17 (18.89%)	0 (0.00%)	4 (5.88%)	0 (0.00%)	2 (12.50%)	0 (0.00%)	23 (12.85%)
12	13 (14.44%)	0 (0.00%)	11 (16.18%)	1 (100.00%)	1 (6.25%)	0 (0.00%)	26 (14.53%)
HSG	25 (27.78%)	2 (66.67%)	47 (69.12%)	0 (0.00%)	3 (18.75%)	0 (0.00%)	77 (43.02%)
GED	2 (2.22%)	0 (0.00%)	1 (1.47%)	0 (0.00%)	0 (0.00%)	0 (0.00%)	3 (1.68%)
Others **	4 (4.44%)	0 (0.00%)	2 (2.94%)	0 (0.00%)	4 (25.00%)	0 (0.00%)	10 (5.59%)
Total	90 (100.00%)	3 (100.00%)	68 (100.00%)	1 (100.00%)	16 (100.00%)	1 (100.00%)	179 (100.00%)

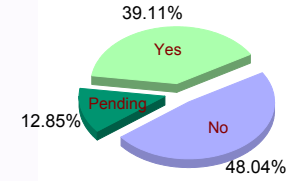


** Includes Aged Out Juveniles and Pending Records

Special Education Services

Yes	38 (42.22%)	3 (100.00%)	24 (35.29%)	1 (100.00%)	4 (25.00%)	0 (0.00%)	70 (39.11%)
No	43 (47.78%)	0 (0.00%)	36 (52.94%)	0 (0.00%)	6 (37.50%)	1 (100.00%)	86 (48.04%)
Pending	9 (10.00%)	0 (0.00%)	8 (11.76%)	0 (0.00%)	6 (37.50%)	0 (0.00%)	23 (12.85%)
Total	90 (100.00%)	3 (100.00%)	68 (100.00%)	1 (100.00%)	16 (100.00%)	1 (100.00%)	179 (100.00%)

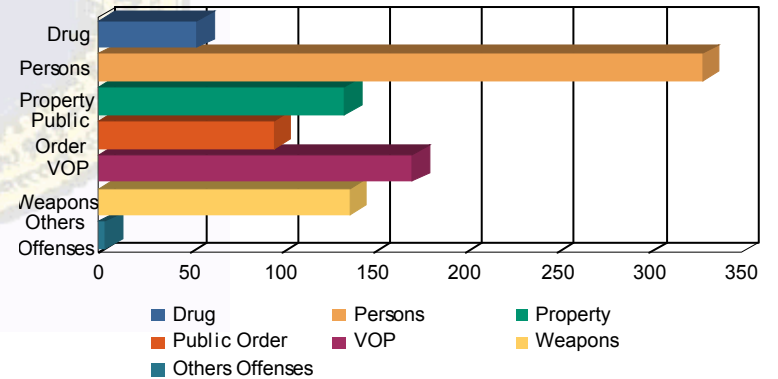
Special Education



Offense Categories

Drug	40 (6.04%)	1 (6.25%)	10 (5.13%)	0 (0.00%)	3 (6.25%)	0 (0.00%)	54 (5.84%)
Persons	202 (30.51%)	7 (43.75%)	107 (54.87%)	2 (100.00%)	11 (22.92%)	0 (0.00%)	329 (35.57%)
Property	108 (16.31%)	1 (6.25%)	18 (9.23%)	0 (0.00%)	6 (12.50%)	1 (50.00%)	134 (14.49%)
Public Order	76 (11.48%)	2 (12.50%)	11 (5.64%)	0 (0.00%)	7 (14.58%)	0 (0.00%)	96 (10.38%)
VOP	137 (20.69%)	3 (18.75%)	21 (10.77%)	0 (0.00%)	9 (18.75%)	1 (50.00%)	171 (18.49%)
Weapons	96 (14.50%)	2 (12.50%)	28 (14.36%)	0 (0.00%)	11 (22.92%)	0 (0.00%)	137 (14.81%)
Others Offenses	3 (0.45%)	0 (0.00%)	0 (0.00%)	0 (0.00%)	1 (2.08%)	0 (0.00%)	4 (0.43%)
Total *	662 (100.00%)	16 (100.00%)	195 (100.00%)	2 (100.00%)	48 (100.00%)	2 (100.00%)	925 (100.00%)

Offense Categories



* Juveniles may have multiple offenses