



NJ Office of the Attorney General Juvenile Justice Commission



*Statistics are for Friday, August 12, 2022

Juvenile Demographics and Statistics

Race/ Ethnicity	COMMITTED				WAIVED				PROBATIONER				AFTERCARE				Total	
	MALE		FEMALE		MALE		FEMALE		MALE		FEMALE		MALE		FEMALE			
BLACK	68	74.73%	2	66.67%	32	46.38%	1	100.00%	8	53.33%	0	0.00%	65	67.71%	3	60.00%	179	63.70%
HISPANIC	16	17.58%	0	0.00%	23	33.33%	0	0.00%	5	33.33%	1	100.00%	21	21.88%	0	0.00%	66	23.49%
WHITE	6	6.59%	1	33.33%	13	18.84%	0	0.00%	1	6.67%	0	0.00%	8	8.33%	2	40.00%	31	11.03%
Others	1	1.10%	0	0.00%	1	1.45%	0	0.00%	1	6.67%	0	0.00%	2	2.08%	0	0.00%	5	1.78%
Total	91	100.00%	3	100.00%	69	100.00%	1	100.00%	15	100.00%	1	100.00%	96	100.00%	5	100.00%	281	100.00%

Age

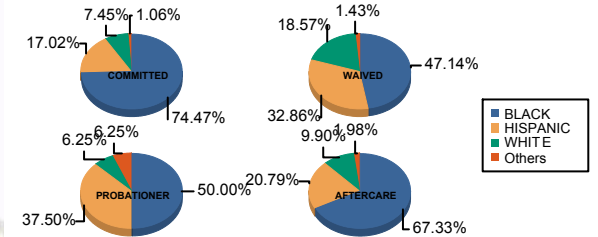
14	1	1.10%	0	0.00%	0	0.00%	0	0.00%	0	0.00%	0	0.00%	1	1.04%	0	0.00%	2	0.71%
15	4	4.40%	1	33.33%	0	0.00%	0	0.00%	1	6.67%	0	0.00%	2	2.08%	0	0.00%	8	2.85%
16	11	12.09%	0	0.00%	1	1.45%	0	0.00%	1	6.67%	0	0.00%	0	0.00%	0	0.00%	13	4.63%
17	24	26.37%	1	33.33%	5	7.25%	0	0.00%	6	40.00%	0	0.00%	5	5.21%	0	0.00%	41	14.59%
18	18	19.78%	0	0.00%	11	15.94%	0	0.00%	6	40.00%	1	100.00%	6	6.25%	1	20.00%	43	15.30%
19	16	17.58%	1	33.33%	13	18.84%	1	100.00%	1	6.67%	0	0.00%	10	10.42%	1	20.00%	43	15.30%
20 and Above	17	18.68%	0	0.00%	39	56.52%	0	0.00%	0	0.00%	0	0.00%	72	75.00%	3	60.00%	131	46.62%
Total	91	100.00%	3	100.00%	69	100.00%	1	100.00%	15	100.00%	1	100.00%	96	100.00%	5	100.00%	281	100.00%

Average Age	18.14	17.00	19.75	19.00	17.33	18.00	21.95	22.00	19.85
-------------	-------	-------	-------	-------	-------	-------	-------	-------	-------

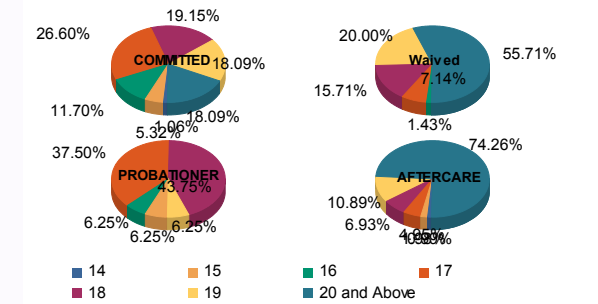
Sentencing County

ATL	9	9.89%	0	0.00%	2	2.90%	0	0.00%	1	6.67%	0	0.00%	1	1.04%	0	0.00%	13	4.63%
BER	0	0.00%	0	0.00%	0	0.00%	0	0.00%	0	0.00%	0	0.00%	1	1.04%	0	0.00%	1	0.36%
BUR	4	4.40%	0	0.00%	1	1.45%	0	0.00%	0	0.00%	0	0.00%	6	6.25%	0	0.00%	11	3.91%
CAM	26	28.57%	2	66.67%	6	8.70%	1	100.00%	0	0.00%	0	0.00%	18	18.75%	3	60.00%	56	19.93%
CAP	0	0.00%	0	0.00%	0	0.00%	0	0.00%	1	6.67%	0	0.00%	0	0.00%	0	0.00%	1	0.36%
CUM	2	2.20%	0	0.00%	2	2.90%	0	0.00%	3	20.00%	0	0.00%	0	0.00%	0	0.00%	7	2.49%
ESS	16	17.58%	0	0.00%	3	4.35%	0	0.00%	0	0.00%	0	0.00%	18	18.75%	0	0.00%	37	13.17%
GLO	0	0.00%	0	0.00%	1	1.45%	0	0.00%	1	6.67%	0	0.00%	1	1.04%	0	0.00%	3	1.07%
HUD	2	2.20%	1	33.33%	5	7.25%	0	0.00%	2	13.33%	0	0.00%	5	5.21%	0	0.00%	15	5.34%
HUN	1	1.10%	0	0.00%	0	0.00%	0	0.00%	0	0.00%	0	0.00%	1	1.04%	0	0.00%	2	0.71%
MER	1	1.10%	0	0.00%	3	4.35%	0	0.00%	0	0.00%	0	0.00%	4	4.17%	0	0.00%	8	2.85%
MID	10	10.99%	0	0.00%	19	27.54%	0	0.00%	0	0.00%	0	0.00%	11	11.46%	0	0.00%	40	14.23%
MON	3	3.30%	0	0.00%	3	4.35%	0	0.00%	4	26.67%	0	0.00%	1	1.04%	0	0.00%	11	3.91%
MOR	1	1.10%	0	0.00%	0	0.00%	0	0.00%	0	0.00%	0	0.00%	0	0.00%	0	0.00%	1	0.36%
OCE	0	0.00%	0	0.00%	3	4.35%	0	0.00%	1	6.67%	0	0.00%	3	3.13%	0	0.00%	7	2.49%
PAS	10	10.99%	0	0.00%	17	24.64%	0	0.00%	2	13.33%	1	100.00%	14	14.58%	1	20.00%	45	16.01%
SAL	0	0.00%	0	0.00%	1	1.45%	0	0.00%	0	0.00%	0	0.00%	0	0.00%	0	0.00%	1	0.36%
SOM	2	2.20%	0	0.00%	0	0.00%	0	0.00%	0	0.00%	0	0.00%	0	0.00%	0	0.00%	2	0.71%
SUS	0	0.00%	0	0.00%	0	0.00%	0	0.00%	0	0.00%	0	0.00%	1	1.04%	0	0.00%	1	0.36%
UNI	4	4.40%	0	0.00%	3	4.35%	0	0.00%	0	0.00%	0	0.00%	7	7.29%	1	20.00%	15	5.34%
OTHER	0	0.00%	0	0.00%	0	0.00%	0	0.00%	0	0.00%	0	0.00%	4	4.17%	0	0.00%	4	1.42%
Total	91	100.00%	3	100.00%	69	100.00%	1	100.00%	15	100.00%	1	100.00%	96	100.00%	5	100.00%	281	100.00%

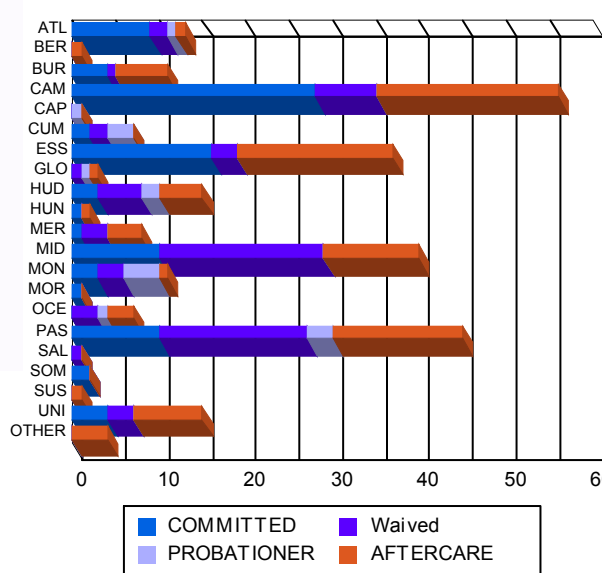
Race/Ethnicity Grouping



Age Grouping



Count of Juveniles By Sentencing County





NJ Office of the Attorney General Juvenile Justice Commission



*Statistics are for Friday, August 12, 2022

Juvenile Demographics and Statistics

Current Grade	COMMITTED		WAIVED		PROBATIONER		Total
	MALE	FEMALE	MALE	FEMALE	MALE	FEMALE	
8	1 (1.10%)	0 0.00%	0 0.00%	0 0.00%	0 0.00%	0 0.00%	1 (0.56%)
9	11 (12.09%)	1 (33.33%)	0 0.00%	0 0.00%	4 (26.67%)	1 (100.00%)	17 (9.44%)
10	19 (20.88%)	0 0.00%	3 (4.35%)	0 0.00%	2 (13.33%)	0 0.00%	24 (13.33%)
11	16 (17.58%)	0 0.00%	3 (4.35%)	0 0.00%	2 (13.33%)	0 0.00%	21 (11.67%)
12	13 (14.29%)	0 0.00%	12 (17.39%)	1 (100.00%)	2 (13.33%)	0 0.00%	28 (15.56%)
HSG	25 (27.47%)	2 (66.67%)	47 (68.12%)	0 0.00%	3 (20.00%)	0 0.00%	77 (42.78%)
GED	2 (2.20%)	0 0.00%	1 (1.45%)	0 0.00%	0 0.00%	0 0.00%	3 (1.67%)
Others **	4 (4.40%)	0 0.00%	3 (4.35%)	0 0.00%	2 (13.33%)	0 0.00%	9 (5.00%)
Total	91 (100.00%)	3 (100.00%)	69 (100.00%)	1 (100.00%)	15 (100.00%)	1 (100.00%)	180 (100.00%)

** Includes Aged Out Juveniles and Pending Records

Special Education Services

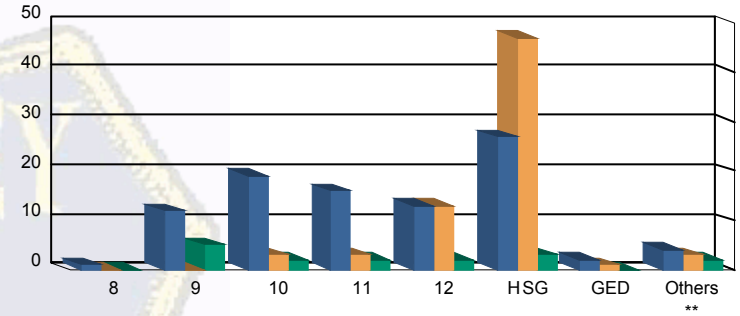
Yes	38 (41.76%)	3 (100.00%)	24 (34.78%)	1 (100.00%)	5 (33.33%)	0 0.00%	71 (39.44%)
No	44 (48.35%)	0 0.00%	36 (52.17%)	0 0.00%	6 (40.00%)	1 (100.00%)	87 (48.33%)
Pending	9 (9.89%)	0 0.00%	9 (13.04%)	0 0.00%	4 (26.67%)	0 0.00%	22 (12.22%)
Total	91 (100.00%)	3 (100.00%)	69 (100.00%)	1 (100.00%)	15 (100.00%)	1 (100.00%)	180 (100.00%)

Offense Categories

Drug	40 (6.00%)	1 (6.25%)	10 (5.13%)	0 0.00%	3 (6.38%)	0 0.00%	54 (5.81%)
Persons	202 (30.28%)	7 (43.75%)	107 (54.87%)	2 (100.00%)	10 (21.28%)	0 0.00%	328 (35.31%)
Property	109 (16.34%)	1 (6.25%)	18 (9.23%)	0 0.00%	5 (10.64%)	1 (50.00%)	134 (14.42%)
Public Order	76 (11.39%)	2 (12.50%)	11 (5.64%)	0 0.00%	7 (14.89%)	0 0.00%	96 (10.33%)
VOP	139 (20.84%)	3 (18.75%)	21 (10.77%)	0 0.00%	9 (19.15%)	1 (50.00%)	173 (18.62%)
Weapons	98 (14.69%)	2 (12.50%)	28 (14.36%)	0 0.00%	12 (25.53%)	0 0.00%	140 (15.07%)
Others Offenses	3 (0.45%)	0 0.00%	0 0.00%	0 0.00%	1 (2.13%)	0 0.00%	4 (0.43%)
Total *	667 (100.00%)	16 (100.00%)	195 (100.00%)	2 (100.00%)	47 (100.00%)	2 (100.00%)	929 (100.00%)

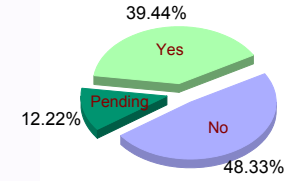
* Juveniles may have multiple offenses

Current Grade



■ COMMITTED ■ WAIVED ■ PROBATIONER

Special Education



Offense Categories

