



Juvenile Demographics and Statistics

Race/ Ethnicity	COMMITTED		WAIVED		PROBATIONER		AFTERCARE		Total									
	MALE	FEMALE	MALE	FEMALE	MALE	FEMALE	MALE	FEMALE										
BLACK	68	72.34%	2	66.67%	32	46.38%	1	100.00%	9	52.94%	0	0.00%	64	69.57%	3	75.00%	179	63.70%
HISPANIC	17	18.09%	0	0.00%	25	36.23%	0	0.00%	6	35.29%	1	100.00%	19	20.65%	0	0.00%	68	24.20%
WHITE	8	8.51%	1	33.33%	11	15.94%	0	0.00%	1	5.88%	0	0.00%	7	7.61%	1	25.00%	29	10.32%
Others	1	1.06%	0	0.00%	1	1.45%	0	0.00%	1	5.88%	0	0.00%	2	2.17%	0	0.00%	5	1.78%
Total	94	100.00%	3	100.00%	69	100.00%	1	100.00%	17	100.00%	1	100.00%	92	100.00%	4	100.00%	281	100.00%

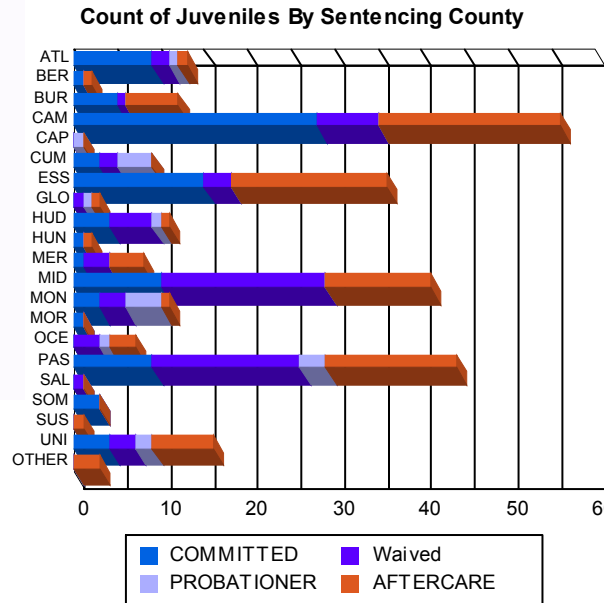
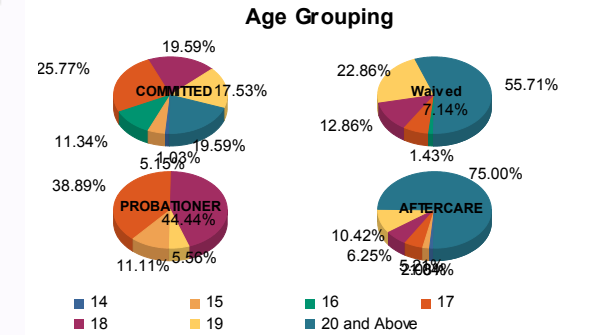
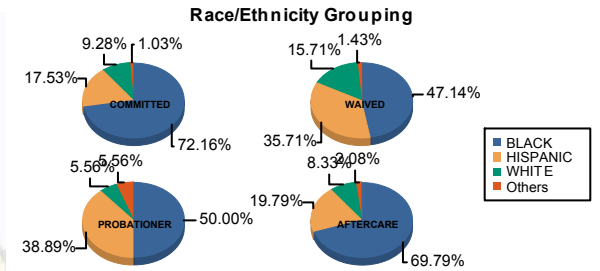
Age

14	1	1.06%	0	0.00%	0	0.00%	0	0.00%	0	0.00%	0	0.00%	1	1.09%	0	0.00%	2	0.71%
15	4	4.26%	1	33.33%	0	0.00%	0	0.00%	2	11.76%	0	0.00%	2	2.17%	0	0.00%	9	3.20%
16	11	11.70%	0	0.00%	1	1.45%	0	0.00%	0	0.00%	0	0.00%	0	0.00%	0	0.00%	12	4.27%
17	24	25.53%	1	33.33%	5	7.25%	0	0.00%	7	41.18%	0	0.00%	5	5.43%	0	0.00%	42	14.95%
18	19	20.21%	0	0.00%	9	13.04%	0	0.00%	7	41.18%	1	100.00%	5	5.43%	1	25.00%	42	14.95%
19	16	17.02%	1	33.33%	15	21.74%	1	100.00%	1	5.88%	0	0.00%	9	9.78%	1	25.00%	44	15.66%
20 and Above	19	20.21%	0	0.00%	39	56.52%	0	0.00%	0	0.00%	0	0.00%	70	76.09%	2	50.00%	130	46.26%
Total	94	100.00%	3	100.00%	69	100.00%	1	100.00%	17	100.00%	1	100.00%	92	100.00%	4	100.00%	281	100.00%

Average Age	18.18	17.00	19.78	19.00	17.29	18.00	21.79	21.75	19.74
-------------	-------	-------	-------	-------	-------	-------	-------	-------	-------

Sentencing County

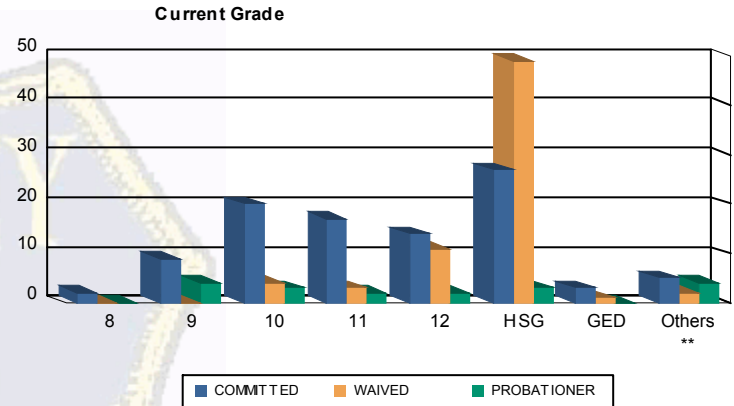
ATL	9	9.57%	0	0.00%	2	2.90%	0	0.00%	1	5.88%	0	0.00%	1	1.09%	0	0.00%	13	4.63%
BER	1	1.06%	0	0.00%	0	0.00%	0	0.00%	0	0.00%	0	0.00%	1	1.09%	0	0.00%	2	0.71%
BUR	5	5.32%	0	0.00%	1	1.45%	0	0.00%	0	0.00%	0	0.00%	6	6.52%	0	0.00%	12	4.27%
CAM	26	27.66%	2	66.67%	6	8.70%	1	100.00%	0	0.00%	0	0.00%	18	19.57%	3	75.00%	56	19.93%
CAP	0	0.00%	0	0.00%	0	0.00%	0	0.00%	1	5.88%	0	0.00%	0	0.00%	0	0.00%	1	0.36%
CUM	3	3.19%	0	0.00%	2	2.90%	0	0.00%	4	23.53%	0	0.00%	0	0.00%	0	0.00%	9	3.20%
ESS	15	15.96%	0	0.00%	3	4.35%	0	0.00%	0	0.00%	0	0.00%	18	19.57%	0	0.00%	36	12.81%
GLO	0	0.00%	0	0.00%	1	1.45%	0	0.00%	1	5.88%	0	0.00%	1	1.09%	0	0.00%	3	1.07%
HUD	3	3.19%	1	33.33%	5	7.25%	0	0.00%	1	5.88%	0	0.00%	1	1.09%	0	0.00%	11	3.91%
HUN	1	1.06%	0	0.00%	0	0.00%	0	0.00%	0	0.00%	0	0.00%	1	1.09%	0	0.00%	2	0.71%
MER	1	1.06%	0	0.00%	3	4.35%	0	0.00%	0	0.00%	0	0.00%	4	4.35%	0	0.00%	8	2.85%
MID	10	10.64%	0	0.00%	19	27.54%	0	0.00%	0	0.00%	0	0.00%	12	13.04%	0	0.00%	41	14.59%
MON	3	3.19%	0	0.00%	3	4.35%	0	0.00%	4	23.53%	0	0.00%	1	1.09%	0	0.00%	11	3.91%
MOR	1	1.06%	0	0.00%	0	0.00%	0	0.00%	0	0.00%	0	0.00%	0	0.00%	0	0.00%	1	0.36%
OCE	0	0.00%	0	0.00%	3	4.35%	0	0.00%	1	5.88%	0	0.00%	3	3.26%	0	0.00%	7	2.49%
PAS	9	9.57%	0	0.00%	17	24.64%	0	0.00%	2	11.76%	1	100.00%	15	16.30%	0	0.00%	44	15.66%
SAL	0	0.00%	0	0.00%	1	1.45%	0	0.00%	0	0.00%	0	0.00%	0	0.00%	0	0.00%	1	0.36%
SOM	3	3.19%	0	0.00%	0	0.00%	0	0.00%	0	0.00%	0	0.00%	0	0.00%	0	0.00%	3	1.07%
SUS	0	0.00%	0	0.00%	0	0.00%	0	0.00%	0	0.00%	0	0.00%	1	1.09%	0	0.00%	1	0.36%
UNI	4	4.26%	0	0.00%	3	4.35%	0	0.00%	2	11.76%	0	0.00%	6	6.52%	1	25.00%	16	5.69%
OTHER	0	0.00%	0	0.00%	0	0.00%	0	0.00%	0	0.00%	0	0.00%	3	3.26%	0	0.00%	3	1.07%
Total	94	100.00%	3	100.00%	69	100.00%	1	100.00%	17	100.00%	1	100.00%	92	100.00%	4	100.00%	281	100.00%





Juvenile Demographics and Statistics

Current Grade	COMMITTED		WAIVED		PROBATIONER		Total
	MALE	FEMALE	MALE	FEMALE	MALE	FEMALE	
8	(2.13%)	0.00%	0.00%	0.00%	0.00%	0.00%	2 (1.08%)
9	(8.51%)	(33.33%)	0.00%	0.00%	(17.65%)	(100.00%)	13 (7.03%)
10	(21.28%)	0.00%	(5.80%)	0.00%	(17.65%)	0.00%	27 (14.59%)
11	(18.09%)	0.00%	(4.35%)	0.00%	(11.76%)	0.00%	22 (11.89%)
12	(14.89%)	0.00%	(14.49%)	(100.00%)	(11.76%)	0.00%	27 (14.59%)
HSG	(26.60%)	(66.67%)	(71.01%)	0.00%	(17.65%)	0.00%	79 (42.70%)
GED	(3.19%)	0.00%	(1.45%)	0.00%	0.00%	0.00%	4 (2.16%)
Others **	(5.32%)	0.00%	(2.90%)	0.00%	(23.53%)	0.00%	11 (5.95%)
Total	94 (100.00%)	3 (100.00%)	69 (100.00%)	1 (100.00%)	17 (100.00%)	1 (100.00%)	185 (100.00%)

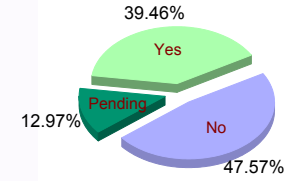


** Includes Aged Out Juveniles and Pending Records

Special Education Services

Yes	39 (41.49%)	3 (100.00%)	25 (36.23%)	1 (100.00%)	5 (29.41%)	0 (0.00%)	73 (39.46%)
No	45 (47.87%)	0 (0.00%)	36 (52.17%)	0 (0.00%)	6 (35.29%)	1 (100.00%)	88 (47.57%)
Pending	10 (10.64%)	0 (0.00%)	8 (11.59%)	0 (0.00%)	6 (35.29%)	0 (0.00%)	24 (12.97%)
Total	94 (100.00%)	3 (100.00%)	69 (100.00%)	1 (100.00%)	17 (100.00%)	1 (100.00%)	185 (100.00%)

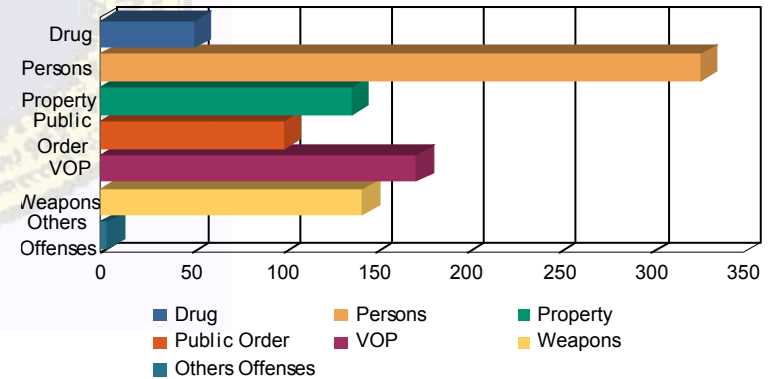
Special Education



Offense Categories

Drug	38 (5.67%)	0 (0.00%)	10 (5.13%)	0 (0.00%)	3 (6.52%)	0 (0.00%)	51 (5.46%)
Persons	201 (30.00%)	7 (50.00%)	107 (54.87%)	2 (100.00%)	9 (19.57%)	1 (14.29%)	327 (35.01%)
Property	110 (16.42%)	1 (7.14%)	18 (9.23%)	0 (0.00%)	5 (10.87%)	3 (42.86%)	137 (14.67%)
Public Order	79 (11.79%)	2 (14.29%)	11 (5.64%)	0 (0.00%)	7 (15.22%)	1 (14.29%)	100 (10.71%)
VOP	138 (20.60%)	2 (14.29%)	21 (10.77%)	0 (0.00%)	9 (19.57%)	2 (28.57%)	172 (18.42%)
Weapons	101 (15.07%)	2 (14.29%)	28 (14.36%)	0 (0.00%)	12 (26.09%)	0 (0.00%)	143 (15.31%)
Others Offenses	3 (0.45%)	0 (0.00%)	0 (0.00%)	0 (0.00%)	1 (2.17%)	0 (0.00%)	4 (0.43%)
Total *	670 (100.00%)	14 (100.00%)	195 (100.00%)	2 (100.00%)	46 (100.00%)	7 (100.00%)	934 (100.00%)

Offense Categories



* Juveniles may have multiple offenses