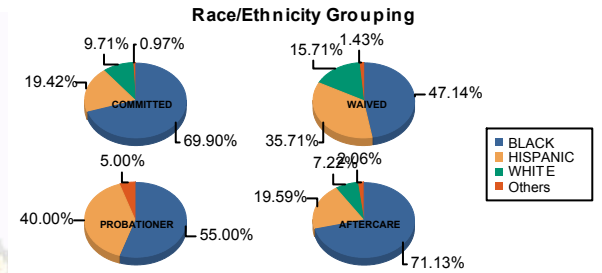




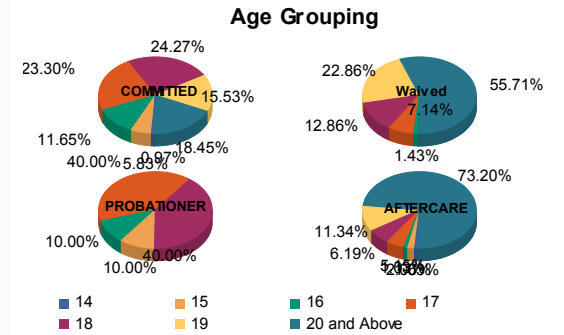
Juvenile Demographics and Statistics

Race/ Ethnicity	COMMITTED		WAIVED		PROBATIONER		AFTERCARE		Total									
	MALE	FEMALE	MALE	FEMALE	MALE	FEMALE	MALE	FEMALE										
BLACK	70	70.71%	2	50.00%	32	46.38%	1	100.00%	9	56.25%	2	50.00%	67	70.53%	2	100.00%	185	63.79%
HISPANIC	20	20.20%	0	0.00%	25	36.23%	0	0.00%	6	37.50%	2	50.00%	19	20.00%	0	0.00%	72	24.83%
WHITE	8	8.08%	2	50.00%	11	15.94%	0	0.00%	0	0.00%	0	0.00%	7	7.37%	0	0.00%	28	9.66%
Others	1	1.01%	0	0.00%	1	1.45%	0	0.00%	1	6.25%	0	0.00%	2	2.11%	0	0.00%	5	1.72%
<b>Total</b>	<b>99</b>	<b>100.00%</b>	<b>4</b>	<b>100.00%</b>	<b>69</b>	<b>100.00%</b>	<b>1</b>	<b>100.00%</b>	<b>16</b>	<b>100.00%</b>	<b>4</b>	<b>100.00%</b>	<b>95</b>	<b>100.00%</b>	<b>2</b>	<b>100.00%</b>	<b>290</b>	<b>100.00%</b>



**Age**

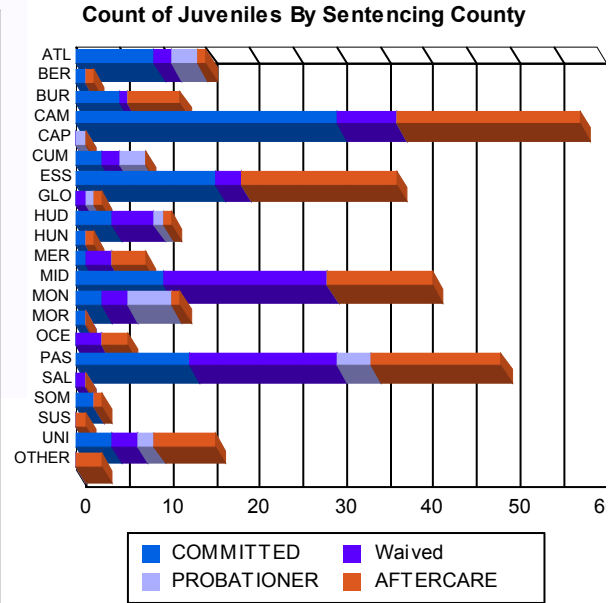
14	1	1.01%	0	0.00%	0	0.00%	0	0.00%	0	0.00%	0	0.00%	1	1.05%	0	0.00%	2	0.69%
15	5	5.05%	1	25.00%	0	0.00%	0	0.00%	1	6.25%	1	25.00%	2	2.11%	0	0.00%	10	3.45%
16	12	12.12%	0	0.00%	1	1.45%	0	0.00%	0	0.00%	2	50.00%	1	1.05%	0	0.00%	16	5.52%
17	23	23.23%	1	25.00%	5	7.25%	0	0.00%	8	50.00%	0	0.00%	5	5.26%	0	0.00%	42	14.48%
18	24	24.24%	1	25.00%	9	13.04%	0	0.00%	7	43.75%	1	25.00%	6	6.32%	0	0.00%	48	16.55%
19	15	15.15%	1	25.00%	15	21.74%	1	100.00%	0	0.00%	0	0.00%	10	10.53%	1	50.00%	43	14.83%
20 and Above	19	19.19%	0	0.00%	39	56.52%	0	0.00%	0	0.00%	0	0.00%	70	73.68%	1	50.00%	129	44.48%
<b>Total</b>	<b>99</b>	<b>100.00%</b>	<b>4</b>	<b>100.00%</b>	<b>69</b>	<b>100.00%</b>	<b>1</b>	<b>100.00%</b>	<b>16</b>	<b>100.00%</b>	<b>4</b>	<b>100.00%</b>	<b>95</b>	<b>100.00%</b>	<b>2</b>	<b>100.00%</b>	<b>290</b>	<b>100.00%</b>



Average Age	18.15	17.25	19.83	19.00	17.31	16.25	21.69	21.00	19.65
-------------	-------	-------	-------	-------	-------	-------	-------	-------	-------

**Sentencing County**

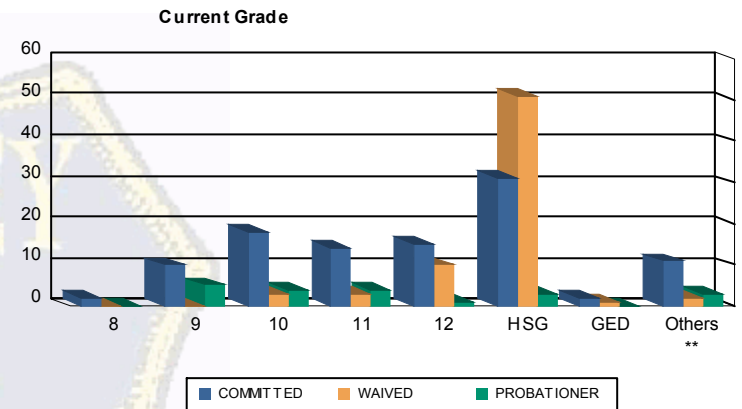
ATL	9	9.09%	0	0.00%	2	2.90%	0	0.00%	1	6.25%	2	50.00%	1	1.05%	0	0.00%	15	5.17%
BER	1	1.01%	0	0.00%	0	0.00%	0	0.00%	0	0.00%	0	0.00%	1	1.05%	0	0.00%	2	0.69%
BUR	5	5.05%	0	0.00%	1	1.45%	0	0.00%	0	0.00%	0	0.00%	6	6.32%	0	0.00%	12	4.14%
CAM	27	27.27%	3	75.00%	6	8.70%	1	100.00%	0	0.00%	0	0.00%	19	20.00%	2	100.00%	58	20.00%
CAP	0	0.00%	0	0.00%	0	0.00%	0	0.00%	1	6.25%	0	0.00%	0	0.00%	0	0.00%	1	0.34%
CUM	3	3.03%	0	0.00%	2	2.90%	0	0.00%	3	18.75%	0	0.00%	0	0.00%	0	0.00%	8	2.76%
ESS	16	16.16%	0	0.00%	3	4.35%	0	0.00%	0	0.00%	0	0.00%	18	18.95%	0	0.00%	37	12.76%
GLO	0	0.00%	0	0.00%	1	1.45%	0	0.00%	1	6.25%	0	0.00%	1	1.05%	0	0.00%	3	1.03%
HUD	3	3.03%	1	25.00%	5	7.25%	0	0.00%	1	6.25%	0	0.00%	1	1.05%	0	0.00%	11	3.79%
HUN	1	1.01%	0	0.00%	0	0.00%	0	0.00%	0	0.00%	0	0.00%	1	1.05%	0	0.00%	2	0.69%
MER	1	1.01%	0	0.00%	3	4.35%	0	0.00%	0	0.00%	0	0.00%	4	4.21%	0	0.00%	8	2.76%
MID	10	10.10%	0	0.00%	19	27.54%	0	0.00%	0	0.00%	0	0.00%	12	12.63%	0	0.00%	41	14.14%
MON	3	3.03%	0	0.00%	3	4.35%	0	0.00%	5	31.25%	0	0.00%	1	1.05%	0	0.00%	12	4.14%
MOR	1	1.01%	0	0.00%	0	0.00%	0	0.00%	0	0.00%	0	0.00%	0	0.00%	0	0.00%	1	0.34%
OCE	0	0.00%	0	0.00%	3	4.35%	0	0.00%	0	0.00%	0	0.00%	3	3.16%	0	0.00%	6	2.07%
PAS	13	13.13%	0	0.00%	17	24.64%	0	0.00%	2	12.50%	2	50.00%	15	15.79%	0	0.00%	49	16.90%
SAL	0	0.00%	0	0.00%	1	1.45%	0	0.00%	0	0.00%	0	0.00%	0	0.00%	0	0.00%	1	0.34%
SOM	2	2.02%	0	0.00%	0	0.00%	0	0.00%	0	0.00%	0	0.00%	1	1.05%	0	0.00%	3	1.03%
SUS	0	0.00%	0	0.00%	0	0.00%	0	0.00%	0	0.00%	0	0.00%	1	1.05%	0	0.00%	1	0.34%
UNI	4	4.04%	0	0.00%	3	4.35%	0	0.00%	2	12.50%	0	0.00%	7	7.37%	0	0.00%	16	5.52%
OTHER	0	0.00%	0	0.00%	0	0.00%	0	0.00%	0	0.00%	0	0.00%	3	3.16%	0	0.00%	3	1.03%
<b>Total</b>	<b>99</b>	<b>100.00%</b>	<b>4</b>	<b>100.00%</b>	<b>69</b>	<b>100.00%</b>	<b>1</b>	<b>100.00%</b>	<b>16</b>	<b>100.00%</b>	<b>4</b>	<b>100.00%</b>	<b>95</b>	<b>100.00%</b>	<b>2</b>	<b>100.00%</b>	<b>290</b>	<b>100.00%</b>





Juvenile Demographics and Statistics

Current Grade	COMMITTED		WAIVED		PROBATIONER		Total
	MALE	FEMALE	MALE	FEMALE	MALE	FEMALE	
8	2 (2.02%)	0 0.00%	0 0.00%	0 0.00%	0 0.00%	0 0.00%	2 (1.04%)
9	9 (9.09%)	1 (25.00%)	0 0.00%	0 0.00%	3 (18.75%)	2 (50.00%)	15 (7.77%)
10	18 (18.18%)	0 0.00%	3 (4.35%)	0 0.00%	4 (25.00%)	0 0.00%	25 (12.95%)
11	14 (14.14%)	0 0.00%	3 (4.35%)	0 0.00%	4 (25.00%)	0 0.00%	21 (10.88%)
12	14 (14.14%)	1 (25.00%)	9 (13.04%)	1 (100.00%)	1 (6.25%)	0 0.00%	26 (13.47%)
HSG	29 (29.29%)	2 (50.00%)	51 (73.91%)	0 0.00%	3 (18.75%)	0 0.00%	85 (44.04%)
GED	2 (2.02%)	0 0.00%	1 (1.45%)	0 0.00%	0 0.00%	0 0.00%	3 (1.55%)
Others **	11 (11.11%)	0 0.00%	2 (2.90%)	0 0.00%	1 (6.25%)	2 (50.00%)	16 (8.29%)
<b>Total</b>	<b>99 (100.00%)</b>	<b>4 (100.00%)</b>	<b>69 (100.00%)</b>	<b>1 (100.00%)</b>	<b>16 (100.00%)</b>	<b>4 (100.00%)</b>	<b>193 (100.00%)</b>

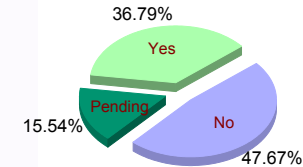


\*\* Includes Aged Out Juveniles and Pending Records

**Special Education Services**

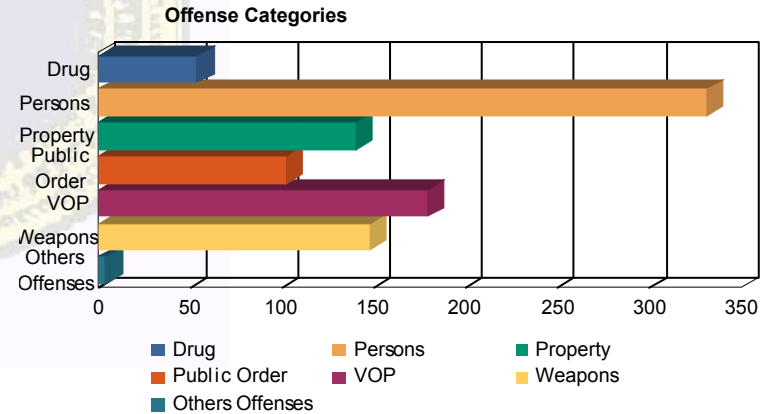
Yes	37 (37.37%)	4 (100.00%)	25 (36.23%)	1 (100.00%)	4 (25.00%)	0 0.00%	71 (36.79%)
No	45 (45.45%)	0 0.00%	36 (52.17%)	0 0.00%	9 (56.25%)	2 (50.00%)	92 (47.67%)
Pending	17 (17.17%)	0 0.00%	8 (11.59%)	0 0.00%	3 (18.75%)	2 (50.00%)	30 (15.54%)
<b>Total</b>	<b>99 (100.00%)</b>	<b>4 (100.00%)</b>	<b>69 (100.00%)</b>	<b>1 (100.00%)</b>	<b>16 (100.00%)</b>	<b>4 (100.00%)</b>	<b>193 (100.00%)</b>

**Special Education**



**Offense Categories**

Drug	41 (5.92%)	0 0.00%	10 (5.13%)	0 0.00%	3 (6.52%)	0 0.00%	54 (5.64%)
Persons	207 (29.87%)	6 (50.00%)	107 (54.87%)	2 (100.00%)	7 (15.22%)	2 (20.00%)	331 (34.55%)
Property	113 (16.31%)	1 (8.33%)	18 (9.23%)	0 0.00%	4 (8.70%)	4 (40.00%)	140 (14.61%)
Public Order	80 (11.54%)	2 (16.67%)	11 (5.64%)	0 0.00%	7 (15.22%)	2 (20.00%)	102 (10.65%)
VOP	143 (20.63%)	2 (16.67%)	21 (10.77%)	0 0.00%	11 (23.91%)	2 (20.00%)	179 (18.68%)
Weapons	106 (15.30%)	1 (8.33%)	28 (14.36%)	0 0.00%	13 (28.26%)	0 0.00%	148 (15.45%)
Others Offenses	3 (0.43%)	0 0.00%	0 0.00%	0 0.00%	1 (2.17%)	0 0.00%	4 (0.42%)
<b>Total *</b>	<b>693 (100.00%)</b>	<b>12 (100.00%)</b>	<b>195 (100.00%)</b>	<b>2 (100.00%)</b>	<b>46 (100.00%)</b>	<b>10 (100.00%)</b>	<b>958 (100.00%)</b>



\* Juveniles may have multiple offenses