



Juvenile Demographics and Statistics

Race/ Ethnicity	COMMITTED		WAIVED		PROBATIONER		AFTERCARE		Total									
	MALE	FEMALE	MALE	FEMALE	MALE	FEMALE	MALE	FEMALE										
BLACK	78	73.58%	2	50.00%	33	45.83%	1	100.00%	14	66.67%	3	75.00%	67	70.53%	2	100.00%	200	65.57%
HISPANIC	19	17.92%	0	0.00%	26	36.11%	0	0.00%	6	28.57%	1	25.00%	19	20.00%	0	0.00%	71	23.28%
WHITE	8	7.55%	2	50.00%	12	16.67%	0	0.00%	0	0.00%	0	0.00%	7	7.37%	0	0.00%	29	9.51%
Others	1	0.94%	0	0.00%	1	1.39%	0	0.00%	1	4.76%	0	0.00%	2	2.11%	0	0.00%	5	1.64%
Total	106	100.00%	4	100.00%	72	100.00%	1	100.00%	21	100.00%	4	100.00%	95	100.00%	2	100.00%	305	100.00%

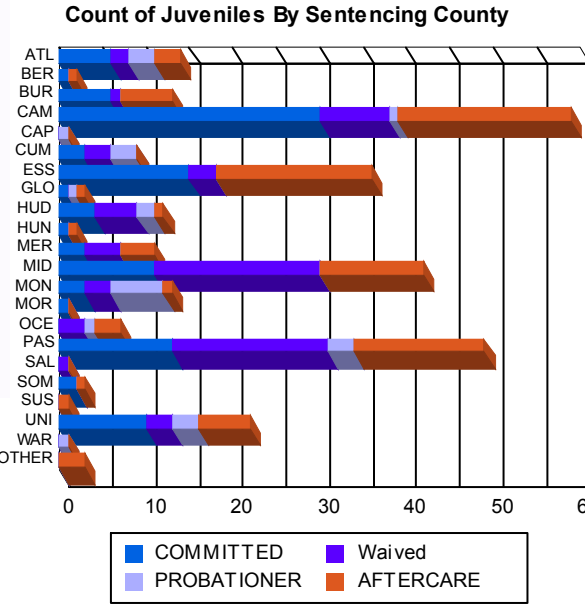
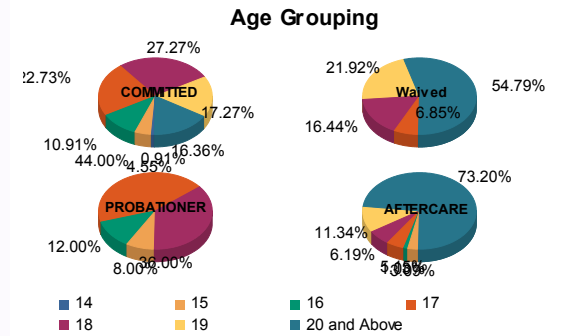
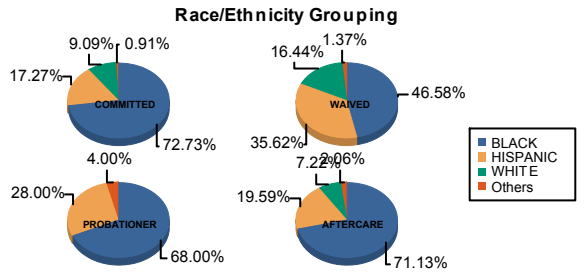
Age

14	1	0.94%	0	0.00%	0	0.00%	0	0.00%	0	0.00%	0	0.00%	0	0.00%	0	0.00%	1	0.33%
15	4	3.77%	1	25.00%	0	0.00%	0	0.00%	1	4.76%	1	25.00%	3	3.16%	0	0.00%	10	3.28%
16	12	11.32%	0	0.00%	0	0.00%	0	0.00%	2	9.52%	1	25.00%	1	1.05%	0	0.00%	16	5.25%
17	24	22.64%	1	25.00%	5	6.94%	0	0.00%	9	42.86%	2	50.00%	5	5.26%	0	0.00%	46	15.08%
18	29	27.36%	1	25.00%	12	16.67%	0	0.00%	9	42.86%	0	0.00%	6	6.32%	0	0.00%	57	18.69%
19	18	16.98%	1	25.00%	15	20.83%	1	100.00%	0	0.00%	0	0.00%	10	10.53%	1	50.00%	46	15.08%
20 and Above	18	16.98%	0	0.00%	40	55.56%	0	0.00%	0	0.00%	0	0.00%	70	73.68%	1	50.00%	129	42.30%
Total	106	100.00%	4	100.00%	72	100.00%	1	100.00%	21	100.00%	4	100.00%	95	100.00%	2	100.00%	305	100.00%

Average Age	18.12	17.25	19.88	19.00	17.24	16.25	21.78	21.00	19.60
-------------	-------	-------	-------	-------	-------	-------	-------	-------	-------

Sentencing County

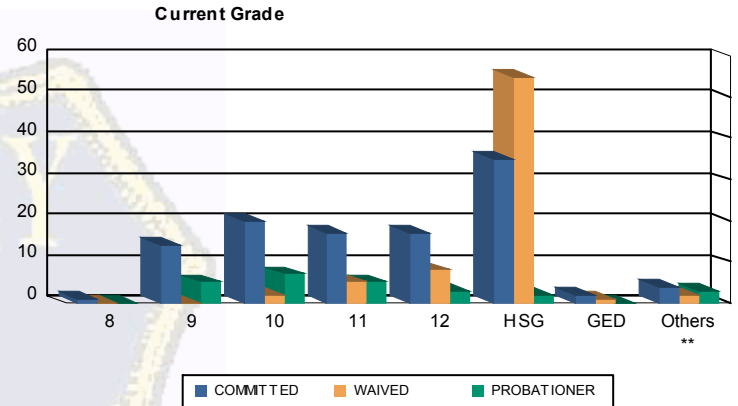
ATL	6	5.66%	0	0.00%	2	2.78%	0	0.00%	1	4.76%	2	50.00%	3	3.16%	0	0.00%	14	4.59%
BER	1	0.94%	0	0.00%	0	0.00%	0	0.00%	0	0.00%	0	0.00%	1	1.05%	0	0.00%	2	0.66%
BUR	6	5.66%	0	0.00%	1	1.39%	0	0.00%	0	0.00%	0	0.00%	6	6.32%	0	0.00%	13	4.26%
CAM	27	25.47%	3	75.00%	7	9.72%	1	100.00%	1	4.76%	0	0.00%	18	18.95%	2	100.00%	59	19.34%
CAP	0	0.00%	0	0.00%	0	0.00%	0	0.00%	1	4.76%	0	0.00%	0	0.00%	0	0.00%	1	0.33%
CUM	3	2.83%	0	0.00%	3	4.17%	0	0.00%	3	14.29%	0	0.00%	0	0.00%	0	0.00%	9	2.95%
ESS	15	14.15%	0	0.00%	3	4.17%	0	0.00%	0	0.00%	0	0.00%	18	18.95%	0	0.00%	36	11.80%
GLO	1	0.94%	0	0.00%	0	0.00%	0	0.00%	1	4.76%	0	0.00%	1	1.05%	0	0.00%	3	0.98%
HUD	3	2.83%	1	25.00%	5	6.94%	0	0.00%	2	9.52%	0	0.00%	1	1.05%	0	0.00%	12	3.93%
HUN	1	0.94%	0	0.00%	0	0.00%	0	0.00%	0	0.00%	0	0.00%	1	1.05%	0	0.00%	2	0.66%
MER	3	2.83%	0	0.00%	4	5.56%	0	0.00%	0	0.00%	0	0.00%	4	4.21%	0	0.00%	11	3.61%
MID	11	10.38%	0	0.00%	19	26.39%	0	0.00%	0	0.00%	0	0.00%	12	12.63%	0	0.00%	42	13.77%
MON	3	2.83%	0	0.00%	3	4.17%	0	0.00%	5	23.81%	1	25.00%	1	1.05%	0	0.00%	13	4.26%
MOR	1	0.94%	0	0.00%	0	0.00%	0	0.00%	0	0.00%	0	0.00%	0	0.00%	0	0.00%	1	0.33%
OCE	0	0.00%	0	0.00%	3	4.17%	0	0.00%	1	4.76%	0	0.00%	3	3.16%	0	0.00%	7	2.30%
PAS	13	12.26%	0	0.00%	18	25.00%	0	0.00%	2	9.52%	1	25.00%	15	15.79%	0	0.00%	49	16.07%
SAL	0	0.00%	0	0.00%	1	1.39%	0	0.00%	0	0.00%	0	0.00%	0	0.00%	0	0.00%	1	0.33%
SOM	2	1.89%	0	0.00%	0	0.00%	0	0.00%	0	0.00%	0	0.00%	1	1.05%	0	0.00%	3	0.98%
SUS	0	0.00%	0	0.00%	0	0.00%	0	0.00%	0	0.00%	0	0.00%	1	1.05%	0	0.00%	1	0.33%
UNI	10	9.43%	0	0.00%	3	4.17%	0	0.00%	3	14.29%	0	0.00%	6	6.32%	0	0.00%	22	7.21%
WAR	0	0.00%	0	0.00%	0	0.00%	0	0.00%	1	4.76%	0	0.00%	0	0.00%	0	0.00%	1	0.33%
OTHER	0	0.00%	0	0.00%	0	0.00%	0	0.00%	0	0.00%	0	0.00%	3	3.16%	0	0.00%	3	0.98%
Total	106	100.00%	4	100.00%	72	100.00%	1	100.00%	21	100.00%	4	100.00%	95	100.00%	2	100.00%	305	100.00%





Juvenile Demographics and Statistics

Current Grade	COMMITTED		WAIVED		PROBATIONER		Total
	MALE	FEMALE	MALE	FEMALE	MALE	FEMALE	
8	1 (0.94%)	0 0.00%	0 0.00%	0 0.00%	0 0.00%	0 0.00%	1 (0.48%)
9	13 (12.26%)	1 (25.00%)	0 0.00%	0 0.00%	4 (19.05%)	1 (25.00%)	19 (9.13%)
10	20 (18.87%)	0 0.00%	2 (2.78%)	0 0.00%	5 (23.81%)	2 (50.00%)	29 (13.94%)
11	17 (16.04%)	0 0.00%	5 (6.94%)	0 0.00%	5 (23.81%)	0 0.00%	27 (12.98%)
12	16 (15.09%)	1 (25.00%)	7 (9.72%)	1 (100.00%)	2 (9.52%)	1 (25.00%)	28 (13.46%)
HSG	33 (31.13%)	2 (50.00%)	55 (76.39%)	0 0.00%	2 (9.52%)	0 0.00%	92 (44.23%)
GED	2 (1.89%)	0 0.00%	1 (1.39%)	0 0.00%	0 0.00%	0 0.00%	3 (1.44%)
Others **	4 (3.77%)	0 0.00%	2 (2.78%)	0 0.00%	3 (14.29%)	0 0.00%	9 (4.33%)
Total	106 (100.00%)	4 (100.00%)	72 (100.00%)	1 (100.00%)	21 (100.00%)	4 (100.00%)	208 (100.00%)

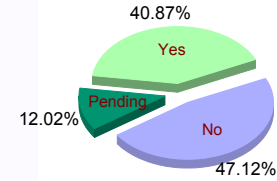


** Includes Aged Out Juveniles and Pending Records

Special Education Services

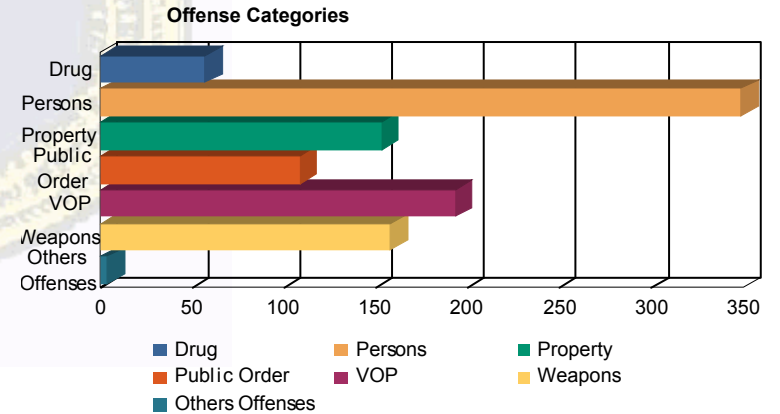
Yes	46 (43.40%)	4 (100.00%)	27 (37.50%)	1 (100.00%)	5 (23.81%)	2 (50.00%)	85 (40.87%)
No	48 (45.28%)	0 0.00%	36 (50.00%)	0 0.00%	12 (57.14%)	2 (50.00%)	98 (47.12%)
Pending	12 (11.32%)	0 0.00%	9 (12.50%)	0 0.00%	4 (19.05%)	0 0.00%	25 (12.02%)
Total	106 (100.00%)	4 (100.00%)	72 (100.00%)	1 (100.00%)	21 (100.00%)	4 (100.00%)	208 (100.00%)

Special Education



Offense Categories

Drug	43 (5.80%)	0 0.00%	10 (4.95%)	0 0.00%	4 (7.02%)	0 0.00%	57 (5.57%)
Persons	216 (29.15%)	6 (50.00%)	110 (54.46%)	2 (100.00%)	12 (21.05%)	3 (33.33%)	349 (34.12%)
Property	124 (16.73%)	1 (8.33%)	19 (9.41%)	0 0.00%	6 (10.53%)	3 (33.33%)	153 (14.96%)
Public Order	84 (11.34%)	2 (16.67%)	13 (6.44%)	0 0.00%	8 (14.04%)	2 (22.22%)	109 (10.65%)
VOP	155 (20.92%)	2 (16.67%)	22 (10.89%)	0 0.00%	13 (22.81%)	1 (11.11%)	193 (18.87%)
Weapons	116 (15.65%)	1 (8.33%)	28 (13.86%)	0 0.00%	13 (22.81%)	0 0.00%	158 (15.44%)
Others Offenses	3 (0.40%)	0 0.00%	0 0.00%	0 0.00%	1 (1.75%)	0 0.00%	4 (0.39%)
Total *	741 (100.00%)	12 (100.00%)	202 (100.00%)	2 (100.00%)	57 (100.00%)	9 (100.00%)	1,023 (100.00%)



* Juveniles may have multiple offenses