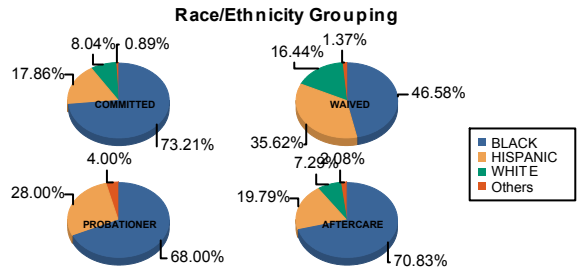




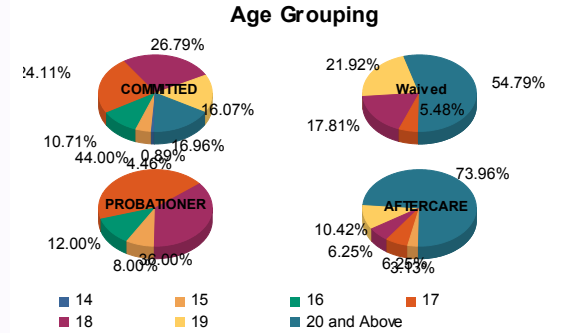
Juvenile Demographics and Statistics

Race/ Ethnicity	COMMITTED		WAIVED		PROBATIONER		AFTERCARE		Total									
	MALE	FEMALE	MALE	FEMALE	MALE	FEMALE	MALE	FEMALE										
BLACK	80	74.07%	2	50.00%	33	45.83%	1	100.00%	14	66.67%	3	75.00%	66	70.21%	2	100.00%	201	65.69%
HISPANIC	20	18.52%	0	0.00%	26	36.11%	0	0.00%	6	28.57%	1	25.00%	19	20.21%	0	0.00%	72	23.53%
WHITE	7	6.48%	2	50.00%	12	16.67%	0	0.00%	0	0.00%	0	0.00%	7	7.45%	0	0.00%	28	9.15%
Others	1	0.93%	0	0.00%	1	1.39%	0	0.00%	1	4.76%	0	0.00%	2	2.13%	0	0.00%	5	1.63%
<b>Total</b>	<b>108</b>	<b>100.00%</b>	<b>4</b>	<b>100.00%</b>	<b>72</b>	<b>100.00%</b>	<b>1</b>	<b>100.00%</b>	<b>21</b>	<b>100.00%</b>	<b>4</b>	<b>100.00%</b>	<b>94</b>	<b>100.00%</b>	<b>2</b>	<b>100.00%</b>	<b>306</b>	<b>100.00%</b>



Age

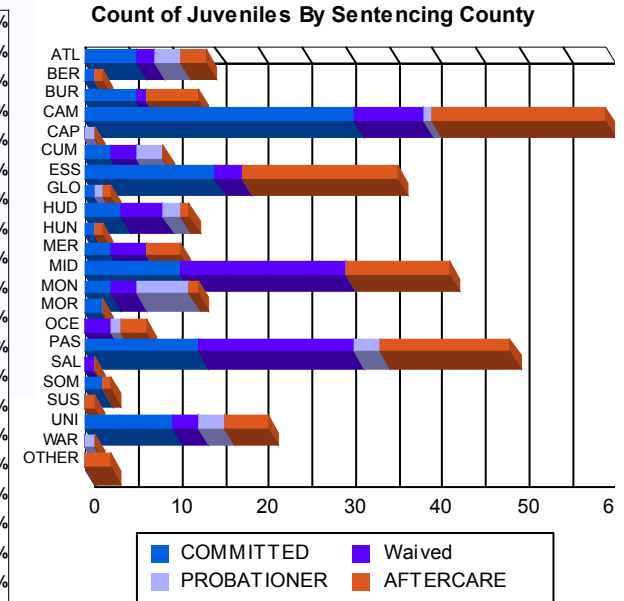
14	1	0.93%	0	0.00%	0	0.00%	0	0.00%	0	0.00%	0	0.00%	0	0.00%	0	0.00%	1	0.33%
15	4	3.70%	1	25.00%	0	0.00%	0	0.00%	1	4.76%	1	25.00%	3	3.19%	0	0.00%	10	3.27%
16	12	11.11%	0	0.00%	0	0.00%	0	0.00%	2	9.52%	1	25.00%	0	0.00%	0	0.00%	15	4.90%
17	26	24.07%	1	25.00%	4	5.56%	0	0.00%	9	42.86%	2	50.00%	6	6.38%	0	0.00%	48	15.69%
18	29	26.85%	1	25.00%	13	18.06%	0	0.00%	9	42.86%	0	0.00%	6	6.38%	0	0.00%	58	18.95%
19	17	15.74%	1	25.00%	15	20.83%	1	100.00%	0	0.00%	0	0.00%	9	9.57%	1	50.00%	44	14.38%
20 and Above	19	17.59%	0	0.00%	40	55.56%	0	0.00%	0	0.00%	0	0.00%	70	74.47%	1	50.00%	130	42.48%
<b>Total</b>	<b>108</b>	<b>100.00%</b>	<b>4</b>	<b>100.00%</b>	<b>72</b>	<b>100.00%</b>	<b>1</b>	<b>100.00%</b>	<b>21</b>	<b>100.00%</b>	<b>4</b>	<b>100.00%</b>	<b>94</b>	<b>100.00%</b>	<b>2</b>	<b>100.00%</b>	<b>306</b>	<b>100.00%</b>



Average Age	18.11	17.25	19.89	19.00	17.24	16.25	21.79	21.00	19.58
-------------	-------	-------	-------	-------	-------	-------	-------	-------	-------

Sentencing County

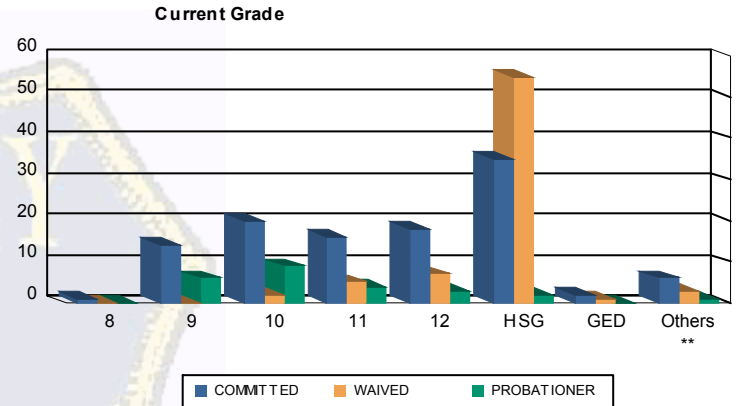
ATL	6	5.56%	0	0.00%	2	2.78%	0	0.00%	1	4.76%	2	50.00%	3	3.19%	0	0.00%	14	4.58%
BER	1	0.93%	0	0.00%	0	0.00%	0	0.00%	0	0.00%	0	0.00%	1	1.06%	0	0.00%	2	0.65%
BUR	6	5.56%	0	0.00%	1	1.39%	0	0.00%	0	0.00%	0	0.00%	6	6.38%	0	0.00%	13	4.25%
CAM	28	25.93%	3	75.00%	7	9.72%	1	100.00%	1	4.76%	0	0.00%	18	19.15%	2	100.00%	60	19.61%
CAP	0	0.00%	0	0.00%	0	0.00%	0	0.00%	1	4.76%	0	0.00%	0	0.00%	0	0.00%	1	0.33%
CUM	3	2.78%	0	0.00%	3	4.17%	0	0.00%	3	14.29%	0	0.00%	0	0.00%	0	0.00%	9	2.94%
ESS	15	13.89%	0	0.00%	3	4.17%	0	0.00%	0	0.00%	0	0.00%	18	19.15%	0	0.00%	36	11.76%
GLO	1	0.93%	0	0.00%	0	0.00%	0	0.00%	1	4.76%	0	0.00%	1	1.06%	0	0.00%	3	0.98%
HUD	3	2.78%	1	25.00%	5	6.94%	0	0.00%	2	9.52%	0	0.00%	1	1.06%	0	0.00%	12	3.92%
HUN	1	0.93%	0	0.00%	0	0.00%	0	0.00%	0	0.00%	0	0.00%	1	1.06%	0	0.00%	2	0.65%
MER	3	2.78%	0	0.00%	4	5.56%	0	0.00%	0	0.00%	0	0.00%	4	4.26%	0	0.00%	11	3.59%
MID	11	10.19%	0	0.00%	19	26.39%	0	0.00%	0	0.00%	0	0.00%	12	12.77%	0	0.00%	42	13.73%
MON	3	2.78%	0	0.00%	3	4.17%	0	0.00%	5	23.81%	1	25.00%	1	1.06%	0	0.00%	13	4.25%
MOR	2	1.85%	0	0.00%	0	0.00%	0	0.00%	0	0.00%	0	0.00%	0	0.00%	0	0.00%	2	0.65%
OCE	0	0.00%	0	0.00%	3	4.17%	0	0.00%	1	4.76%	0	0.00%	3	3.19%	0	0.00%	7	2.29%
PAS	13	12.04%	0	0.00%	18	25.00%	0	0.00%	2	9.52%	1	25.00%	15	15.96%	0	0.00%	49	16.01%
SAL	0	0.00%	0	0.00%	1	1.39%	0	0.00%	0	0.00%	0	0.00%	0	0.00%	0	0.00%	1	0.33%
SOM	2	1.85%	0	0.00%	0	0.00%	0	0.00%	0	0.00%	0	0.00%	1	1.06%	0	0.00%	3	0.98%
SUS	0	0.00%	0	0.00%	0	0.00%	0	0.00%	0	0.00%	0	0.00%	1	1.06%	0	0.00%	1	0.33%
UNI	10	9.26%	0	0.00%	3	4.17%	0	0.00%	3	14.29%	0	0.00%	5	5.32%	0	0.00%	21	6.86%
WAR	0	0.00%	0	0.00%	0	0.00%	0	0.00%	1	4.76%	0	0.00%	0	0.00%	0	0.00%	1	0.33%
OTHER	0	0.00%	0	0.00%	0	0.00%	0	0.00%	0	0.00%	0	0.00%	3	3.19%	0	0.00%	3	0.98%
<b>Total</b>	<b>108</b>	<b>100.00%</b>	<b>4</b>	<b>100.00%</b>	<b>72</b>	<b>100.00%</b>	<b>1</b>	<b>100.00%</b>	<b>21</b>	<b>100.00%</b>	<b>4</b>	<b>100.00%</b>	<b>94</b>	<b>100.00%</b>	<b>2</b>	<b>100.00%</b>	<b>306</b>	<b>100.00%</b>





Juvenile Demographics and Statistics

Current Grade	COMMITTED		WAIVED		PROBATIONER		Total
	MALE	FEMALE	MALE	FEMALE	MALE	FEMALE	
8	1 (0.93%)	0 (0.00%)	0 (0.00%)	0 (0.00%)	0 (0.00%)	0 (0.00%)	1 (0.48%)
9	13 (12.04%)	1 (25.00%)	0 (0.00%)	0 (0.00%)	5 (23.81%)	1 (25.00%)	20 (9.52%)
10	20 (18.52%)	0 (0.00%)	2 (2.78%)	0 (0.00%)	7 (33.33%)	2 (50.00%)	31 (14.76%)
11	16 (14.81%)	0 (0.00%)	5 (6.94%)	0 (0.00%)	4 (19.05%)	0 (0.00%)	25 (11.90%)
12	17 (15.74%)	1 (25.00%)	6 (8.33%)	1 (100.00%)	2 (9.52%)	1 (25.00%)	28 (13.33%)
HSG	33 (30.56%)	2 (50.00%)	55 (76.39%)	0 (0.00%)	2 (9.52%)	0 (0.00%)	92 (43.81%)
GED	2 (1.85%)	0 (0.00%)	1 (1.39%)	0 (0.00%)	0 (0.00%)	0 (0.00%)	3 (1.43%)
Others **	6 (5.56%)	0 (0.00%)	3 (4.17%)	0 (0.00%)	1 (4.76%)	0 (0.00%)	10 (4.76%)
<b>Total</b>	<b>108 (100.00%)</b>	<b>4 (100.00%)</b>	<b>72 (100.00%)</b>	<b>1 (100.00%)</b>	<b>21 (100.00%)</b>	<b>4 (100.00%)</b>	<b>210 (100.00%)</b>

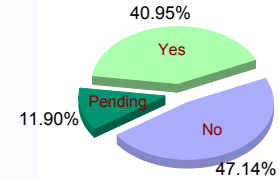


\*\* Includes Aged Out Juveniles and Pending Records

Special Education Services

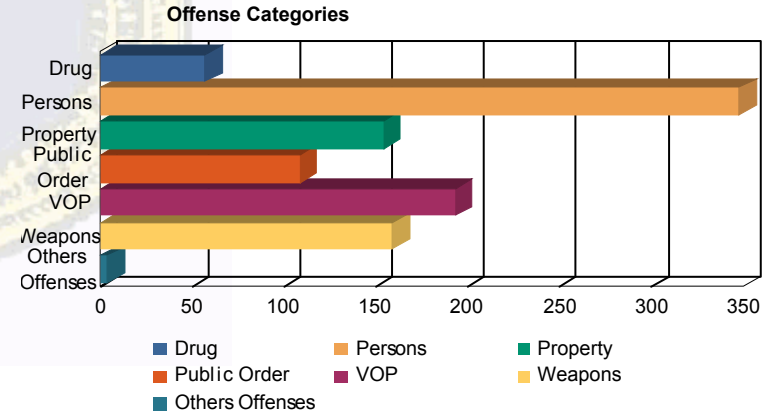
Yes	46 (42.59%)	4 (100.00%)	27 (37.50%)	1 (100.00%)	6 (28.57%)	2 (50.00%)	86 (40.95%)
No	48 (44.44%)	0 (0.00%)	36 (50.00%)	0 (0.00%)	13 (61.90%)	2 (50.00%)	99 (47.14%)
Pending	14 (12.96%)	0 (0.00%)	9 (12.50%)	0 (0.00%)	2 (9.52%)	0 (0.00%)	25 (11.90%)
<b>Total</b>	<b>108 (100.00%)</b>	<b>4 (100.00%)</b>	<b>72 (100.00%)</b>	<b>1 (100.00%)</b>	<b>21 (100.00%)</b>	<b>4 (100.00%)</b>	<b>210 (100.00%)</b>

Special Education



Offense Categories

Drug	43 (5.81%)	0 (0.00%)	10 (4.95%)	0 (0.00%)	4 (6.78%)	0 (0.00%)	57 (5.57%)
Persons	215 (29.05%)	6 (50.00%)	110 (54.46%)	2 (100.00%)	12 (20.34%)	3 (33.33%)	348 (33.98%)
Property	124 (16.76%)	1 (8.33%)	19 (9.41%)	0 (0.00%)	7 (11.86%)	3 (33.33%)	154 (15.04%)
Public Order	84 (11.35%)	2 (16.67%)	13 (6.44%)	0 (0.00%)	8 (13.56%)	2 (22.22%)	109 (10.64%)
VOP	155 (20.95%)	2 (16.67%)	22 (10.89%)	0 (0.00%)	13 (22.03%)	1 (11.11%)	193 (18.85%)
Weapons	116 (15.68%)	1 (8.33%)	28 (13.86%)	0 (0.00%)	14 (23.73%)	0 (0.00%)	159 (15.53%)
Others Offenses	3 (0.41%)	0 (0.00%)	0 (0.00%)	0 (0.00%)	1 (1.69%)	0 (0.00%)	4 (0.39%)
<b>Total *</b>	<b>740 (100.00%)</b>	<b>12 (100.00%)</b>	<b>202 (100.00%)</b>	<b>2 (100.00%)</b>	<b>59 (100.00%)</b>	<b>9 (100.00%)</b>	<b>1,024 (100.00%)</b>



\* Juveniles may have multiple offenses