



NJ Office of the Attorney General Juvenile Justice Commission



*Statistics are for Friday, March 3, 2023

Juvenile Demographics and Statistics

Race/ Ethnicity	COMMITTED				WAIVED				PROBATIONER				AFTERCARE				Total	
	MALE		FEMALE		MALE		FEMALE		MALE		FEMALE		MALE		FEMALE			
BLACK	84	76.36%	2	66.67%	37	48.68%	1	100.00%	19	76.00%	1	100.00%	72	75.00%	2	66.67%	218	69.21%
HISPANIC	20	18.18%	0	0.00%	26	34.21%	0	0.00%	5	20.00%	0	0.00%	16	16.67%	0	0.00%	67	21.27%
WHITE	5	4.55%	1	33.33%	12	15.79%	0	0.00%	0	0.00%	0	0.00%	6	6.25%	1	33.33%	25	7.94%
ASIAN	1	0.91%	0	0.00%	0	0.00%	0	0.00%	0	0.00%	0	0.00%	0	0.00%	0	0.00%	1	0.32%
Others	0	0.00%	0	0.00%	1	1.32%	0	0.00%	1	4.00%	0	0.00%	2	2.08%	0	0.00%	4	1.27%
Total	110	100.00%	3	100.00%	76	100.00%	1	100.00%	25	100.00%	1	100.00%	96	100.00%	3	100.00%	315	100.00%

Age

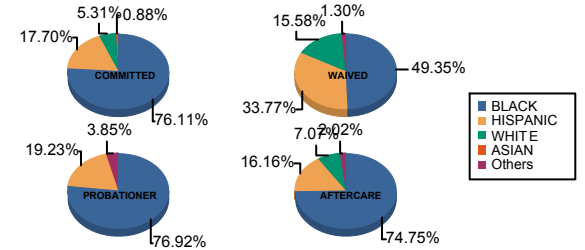
15	1	0.91%	1	33.33%	0	0.00%	0	0.00%	4	16.00%	0	0.00%	3	3.13%	0	0.00%	9	2.86%
16	6	5.45%	0	0.00%	0	0.00%	0	0.00%	4	16.00%	0	0.00%	3	3.13%	0	0.00%	13	4.13%
17	26	23.64%	0	0.00%	4	5.26%	0	0.00%	9	36.00%	1	100.00%	4	4.17%	0	0.00%	44	13.97%
18	35	31.82%	2	66.67%	9	11.84%	0	0.00%	7	28.00%	0	0.00%	13	13.54%	0	0.00%	66	20.95%
19	22	20.00%	0	0.00%	20	26.32%	1	100.00%	1	4.00%	0	0.00%	7	7.29%	2	66.67%	53	16.83%
20 and Above	20	18.18%	0	0.00%	43	56.58%	0	0.00%	0	0.00%	0	0.00%	66	68.75%	1	33.33%	130	41.27%
Total	110	100.00%	3	100.00%	76	100.00%	1	100.00%	25	100.00%	1	100.00%	96	100.00%	3	100.00%	315	100.00%

Average Age	18.41	17.00	20.09	19.00	16.88	17.00	21.66	20.33	19.69
-------------	-------	-------	-------	-------	-------	-------	-------	-------	-------

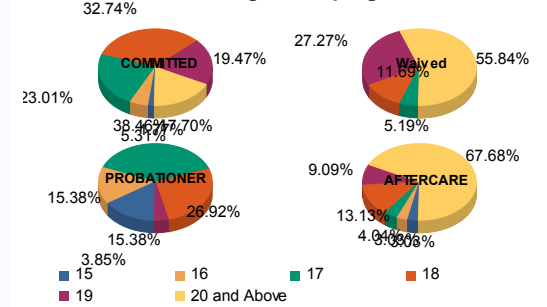
Sentencing County

ATL	4	3.64%	0	0.00%	4	5.26%	0	0.00%	6	24.00%	0	0.00%	2	2.08%	0	0.00%	16	5.08%
BER	1	0.91%	0	0.00%	0	0.00%	0	0.00%	0	0.00%	0	0.00%	2	2.08%	0	0.00%	3	0.95%
BUR	6	5.45%	0	0.00%	1	1.32%	0	0.00%	1	4.00%	0	0.00%	8	8.33%	0	0.00%	16	5.08%
CAM	29	26.36%	2	66.67%	6	7.89%	1	100.00%	5	20.00%	0	0.00%	15	15.63%	3	100.00%	61	19.37%
CUM	3	2.73%	0	0.00%	2	2.63%	0	0.00%	1	4.00%	0	0.00%	0	0.00%	0	0.00%	6	1.90%
ESS	21	19.09%	0	0.00%	3	3.95%	0	0.00%	0	0.00%	0	0.00%	19	19.79%	0	0.00%	43	13.65%
GLO	1	0.91%	0	0.00%	0	0.00%	0	0.00%	1	4.00%	0	0.00%	1	1.04%	0	0.00%	3	0.95%
HUD	4	3.64%	1	33.33%	5	6.58%	0	0.00%	0	0.00%	0	0.00%	1	1.04%	0	0.00%	11	3.49%
HUN	1	0.91%	0	0.00%	0	0.00%	0	0.00%	0	0.00%	0	0.00%	1	1.04%	0	0.00%	2	0.63%
MER	3	2.73%	0	0.00%	4	5.26%	0	0.00%	0	0.00%	0	0.00%	4	4.17%	0	0.00%	11	3.49%
MID	12	10.91%	0	0.00%	20	26.32%	0	0.00%	0	0.00%	0	0.00%	12	12.50%	0	0.00%	44	13.97%
MON	2	1.82%	0	0.00%	3	3.95%	0	0.00%	3	12.00%	1	100.00%	3	3.13%	0	0.00%	12	3.81%
MOR	1	0.91%	0	0.00%	0	0.00%	0	0.00%	0	0.00%	0	0.00%	0	0.00%	0	0.00%	1	0.32%
OCE	1	0.91%	0	0.00%	3	3.95%	0	0.00%	1	4.00%	0	0.00%	3	3.13%	0	0.00%	8	2.54%
PAS	11	10.00%	0	0.00%	19	25.00%	0	0.00%	2	8.00%	0	0.00%	15	15.63%	0	0.00%	47	14.92%
SAL	0	0.00%	0	0.00%	3	3.95%	0	0.00%	0	0.00%	0	0.00%	0	0.00%	0	0.00%	3	0.95%
SOM	1	0.91%	0	0.00%	0	0.00%	0	0.00%	0	0.00%	0	0.00%	1	1.04%	0	0.00%	2	0.63%
UNI	8	7.27%	0	0.00%	3	3.95%	0	0.00%	3	12.00%	0	0.00%	5	5.21%	0	0.00%	19	6.03%
WAR	1	0.91%	0	0.00%	0	0.00%	0	0.00%	2	8.00%	0	0.00%	0	0.00%	0	0.00%	3	0.95%
OTHER	0	0.00%	0	0.00%	0	0.00%	0	0.00%	0	0.00%	0	0.00%	4	4.17%	0	0.00%	4	1.27%
Total	110	100.00%	3	100.00%	76	100.00%	1	100.00%	25	100.00%	1	100.00%	96	100.00%	3	100.00%	315	100.00%

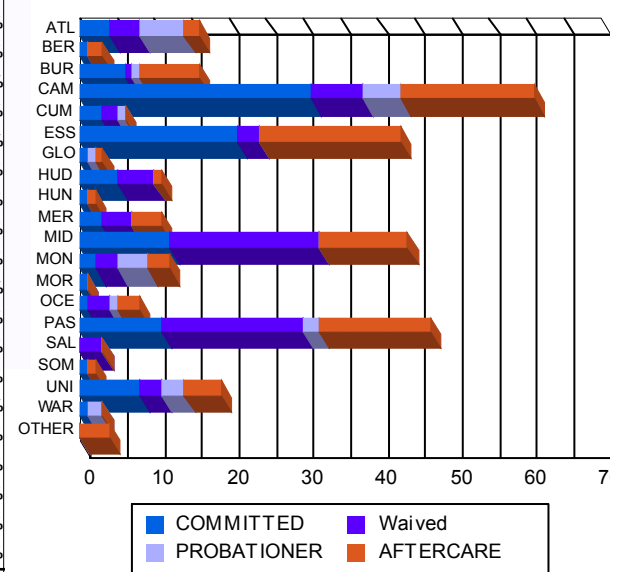
Race/Ethnicity Grouping



Age Grouping



Count of Juveniles By Sentencing County





NJ Office of the Attorney General Juvenile Justice Commission



*Statistics are for Friday, March 3, 2023

Juvenile Demographics and Statistics

Current Grade	COMMITTED		WAIVED		PROBATIONER		Total
	MALE	FEMALE	MALE	FEMALE	MALE	FEMALE	
8	1 (0.91%)	0 0.00%	0 0.00%	0 0.00%	0 0.00%	0 0.00%	1 (0.46%)
9	10 (9.09%)	0 0.00%	1 (1.32%)	0 0.00%	5 (20.00%)	0 0.00%	16 (7.41%)
10	18 (16.36%)	1 (33.33%)	2 (2.63%)	0 0.00%	9 (36.00%)	0 0.00%	30 (13.89%)
11	21 (19.09%)	0 0.00%	4 (5.26%)	0 0.00%	5 (20.00%)	0 0.00%	30 (13.89%)
12	18 (16.36%)	1 (33.33%)	6 (7.89%)	0 0.00%	0 0.00%	1 (100.00%)	26 (12.04%)
HSG	37 (33.64%)	1 (33.33%)	59 (77.63%)	1 (100.00%)	2 (8.00%)	0 0.00%	100 (46.30%)
GED	2 (1.82%)	0 0.00%	1 (1.32%)	0 0.00%	1 (4.00%)	0 0.00%	4 (1.85%)
Others **	3 (2.73%)	0 0.00%	3 (3.95%)	0 0.00%	3 (12.00%)	0 0.00%	9 (4.17%)
Total	110 (100.00%)	3 (100.00%)	76 (100.00%)	1 (100.00%)	25 (100.00%)	1 (100.00%)	216 (100.00%)

** Includes Aged Out Juveniles and Pending Records

Special Education Services

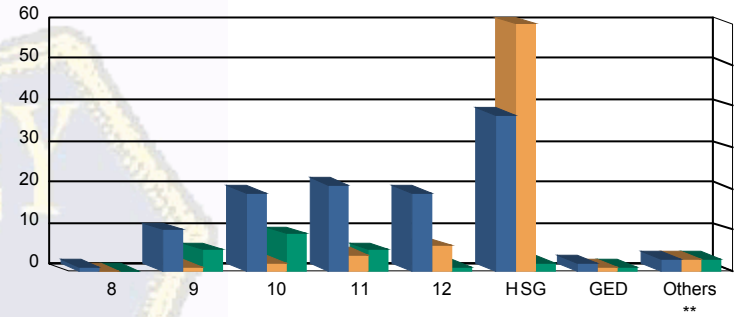
Yes	57 (51.82%)	3 (100.00%)	32 (42.11%)	1 (100.00%)	9 (36.00%)	1 (100.00%)	103 (47.69%)
No	42 (38.18%)	0 0.00%	34 (44.74%)	0 0.00%	13 (52.00%)	0 0.00%	89 (41.20%)
Pending	11 (10.00%)	0 0.00%	10 (13.16%)	0 0.00%	3 (12.00%)	0 0.00%	24 (11.11%)
Total	110 (100.00%)	3 (100.00%)	76 (100.00%)	1 (100.00%)	25 (100.00%)	1 (100.00%)	216 (100.00%)

Offense Categories

Drug	42 (5.50%)	0 0.00%	10 (4.81%)	0 0.00%	9 (9.38%)	0 0.00%	61 (5.63%)
Persons	214 (28.05%)	7 (53.85%)	115 (55.29%)	2 (100.00%)	20 (20.83%)	1 (100.00%)	359 (33.15%)
Property	132 (17.30%)	1 (7.69%)	20 (9.62%)	0 0.00%	16 (16.67%)	0 0.00%	169 (15.60%)
Public Order	89 (11.66%)	2 (15.38%)	13 (6.25%)	0 0.00%	10 (10.42%)	0 0.00%	114 (10.53%)
VOP	160 (20.97%)	2 (15.38%)	22 (10.58%)	0 0.00%	20 (20.83%)	0 0.00%	204 (18.84%)
Weapons	123 (16.12%)	1 (7.69%)	28 (13.46%)	0 0.00%	17 (17.71%)	0 0.00%	169 (15.60%)
Others Offenses	3 (0.39%)	0 0.00%	0 0.00%	0 0.00%	4 (4.17%)	0 0.00%	7 (0.65%)
Total *	763 (100.00%)	13 (100.00%)	208 (100.00%)	2 (100.00%)	96 (100.00%)	1 (100.00%)	1,083 (100.00%)

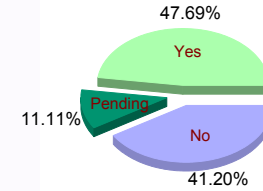
* Juveniles may have multiple offenses

Current Grade



COMMITTED WAIVED PROBATIONER

Special Education



Offense Categories

