



NJ Office of the Attorney General Juvenile Justice Commission



*Statistics are for Friday, April 7, 2023

Juvenile Demographics and Statistics

Race/ Ethnicity	COMMITTED		WAIVED		PROBATIONER		AFTERCARE		Total	
	MALE	FEMALE	MALE	FEMALE	MALE	FEMALE	MALE	FEMALE		
BLACK	87	77.68%	2	66.67%	38	50.67%	1	100.00%	17	70.83%
HISPANIC	19	16.96%	0	0.00%	25	33.33%	0	0.00%	5	20.83%
WHITE	5	4.46%	1	33.33%	12	16.00%	0	0.00%	1	4.17%
ASIAN	1	0.89%	0	0.00%	0	0.00%	0	0.00%	0	0.00%
Others	0	0.00%	0	0.00%	0	0.00%	0	0.00%	1	4.17%
Total	112	100.00%	3	100.00%	75	100.00%	2	100.00%	94	100.00%

Age

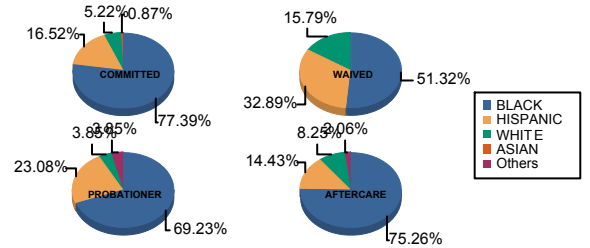
13 and Below	0	0.00%	0	0.00%	0	0.00%	0	0.00%	1	4.17%	0	0.00%	0	0.00%	1	0.32%
15	0	0.00%	0	0.00%	0	0.00%	0	0.00%	3	12.50%	0	0.00%	1	1.06%	0	1.27%
16	8	7.14%	1	33.33%	0	0.00%	0	0.00%	3	12.50%	2	100.00%	6	6.38%	0	6.37%
17	26	23.21%	0	0.00%	4	5.33%	0	0.00%	8	33.33%	0	0.00%	5	5.32%	0	13.69%
18	34	30.36%	2	66.67%	8	10.67%	0	0.00%	8	33.33%	0	0.00%	11	11.70%	0	20.06%
19	22	19.64%	0	0.00%	21	28.00%	1	100.00%	1	4.17%	0	0.00%	9	9.57%	2	17.83%
20 and Above	22	19.64%	0	0.00%	42	56.00%	0	0.00%	0	0.00%	0	0.00%	62	65.96%	1	40.45%
Total	112	100.00%	3	100.00%	75	100.00%	1	100.00%	24	100.00%	2	100.00%	94	100.00%	3	100.00%

Average Age	18.48	17.33	20.07	19.00	16.88	16.00	21.66	20.67	19.68
-------------	-------	-------	-------	-------	-------	-------	-------	-------	-------

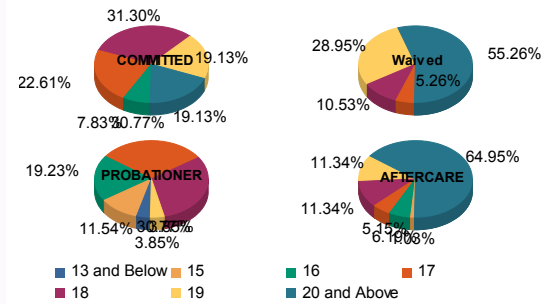
Sentencing County

ATL	4	3.57%	0	0.00%	4	5.33%	0	0.00%	6	25.00%	0	0.00%	2	2.13%	0	5.10%
BER	2	1.79%	0	0.00%	0	0.00%	0	0.00%	0	0.00%	0	0.00%	2	2.13%	0	1.27%
BUR	6	5.36%	0	0.00%	2	2.67%	0	0.00%	2	8.33%	0	0.00%	8	8.51%	0	5.73%
CAM	33	29.46%	2	66.67%	6	8.00%	1	100.00%	6	25.00%	0	0.00%	12	12.77%	3	20.06%
CUM	4	3.57%	0	0.00%	2	2.67%	0	0.00%	1	4.17%	0	0.00%	0	0.00%	0	2.23%
ESS	23	20.54%	0	0.00%	2	2.67%	0	0.00%	0	0.00%	0	0.00%	19	20.21%	0	14.01%
GLO	1	0.89%	0	0.00%	0	0.00%	0	0.00%	1	4.17%	0	0.00%	1	1.06%	0	0.96%
HUD	5	4.46%	1	33.33%	4	5.33%	0	0.00%	0	0.00%	0	0.00%	1	1.06%	0	3.50%
HUN	1	0.89%	0	0.00%	0	0.00%	0	0.00%	0	0.00%	0	0.00%	1	1.06%	0	0.64%
MER	3	2.68%	0	0.00%	4	5.33%	0	0.00%	0	0.00%	0	0.00%	3	3.19%	0	3.18%
MID	10	8.93%	0	0.00%	20	26.67%	0	0.00%	0	0.00%	0	0.00%	13	13.83%	0	13.69%
MON	2	1.79%	0	0.00%	4	5.33%	0	0.00%	2	8.33%	0	0.00%	3	3.19%	0	3.50%
MOR	1	0.89%	0	0.00%	0	0.00%	0	0.00%	0	0.00%	0	0.00%	0	0.00%	0	0.32%
OCE	1	0.89%	0	0.00%	2	2.67%	0	0.00%	1	4.17%	0	0.00%	3	3.19%	0	2.23%
PAS	9	8.04%	0	0.00%	19	25.33%	0	0.00%	3	12.50%	2	100.00%	14	14.89%	0	14.97%
SAL	0	0.00%	0	0.00%	3	4.00%	0	0.00%	0	0.00%	0	0.00%	0	0.00%	0	0.96%
SOM	0	0.00%	0	0.00%	0	0.00%	0	0.00%	0	0.00%	0	0.00%	1	1.06%	0	0.32%
UNI	6	5.36%	0	0.00%	3	4.00%	0	0.00%	1	4.17%	0	0.00%	6	6.38%	0	5.10%
WAR	1	0.89%	0	0.00%	0	0.00%	0	0.00%	1	4.17%	0	0.00%	0	0.00%	0	0.64%
OTHER	0	0.00%	0	0.00%	0	0.00%	0	0.00%	0	0.00%	0	0.00%	5	5.32%	0	1.59%
Total	112	100.00%	3	100.00%	75	100.00%	1	100.00%	24	100.00%	2	100.00%	94	100.00%	3	100.00%

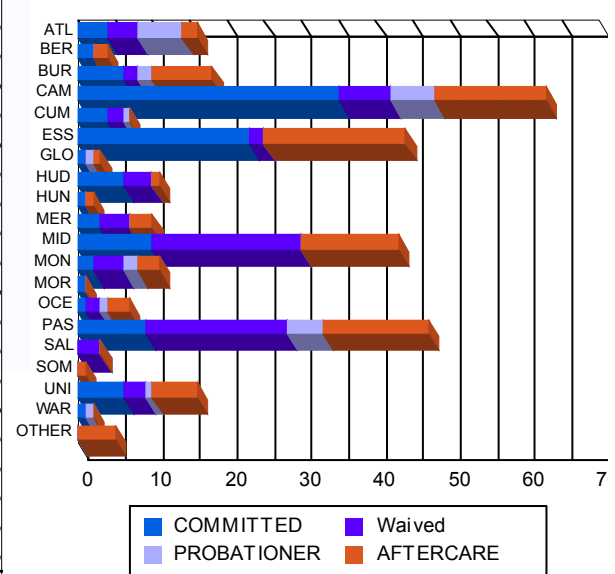
Race/Ethnicity Grouping



Age Grouping



Count of Juveniles By Sentencing County





NJ Office of the Attorney General Juvenile Justice Commission



*Statistics are for Friday, April 7, 2023

Juvenile Demographics and Statistics

Current Grade	COMMITTED		WAIVED		PROBATIONER		Total
	MALE	FEMALE	MALE	FEMALE	MALE	FEMALE	
8	1 (0.89%)	0 0.00%	0 0.00%	0 0.00%	0 0.00%	0 0.00%	1 (0.46%)
9	10 (8.93%)	0 0.00%	1 (1.33%)	0 0.00%	7 (29.17%)	0 0.00%	18 (8.29%)
10	16 (14.29%)	1 (33.33%)	3 (4.00%)	0 0.00%	7 (29.17%)	0 0.00%	27 (12.44%)
11	24 (21.43%)	0 0.00%	2 (2.67%)	0 0.00%	6 (25.00%)	1 (50.00%)	33 (15.21%)
12	19 (16.96%)	1 (33.33%)	8 (10.67%)	0 0.00%	1 (4.17%)	0 0.00%	29 (13.36%)
HSG	38 (33.93%)	1 (33.33%)	57 (76.00%)	1 (100.00%)	1 (4.17%)	0 0.00%	98 (45.16%)
GED	3 (2.68%)	0 0.00%	2 (2.67%)	0 0.00%	0 0.00%	0 0.00%	5 (2.30%)
Others **	1 (0.89%)	0 0.00%	2 (2.67%)	0 0.00%	2 (8.33%)	1 (50.00%)	6 (2.76%)
Total	112 (100.00%)	3 (100.00%)	75 (100.00%)	1 (100.00%)	24 (100.00%)	2 (100.00%)	217 (100.00%)

** Includes Aged Out Juveniles and Pending Records

Special Education Services

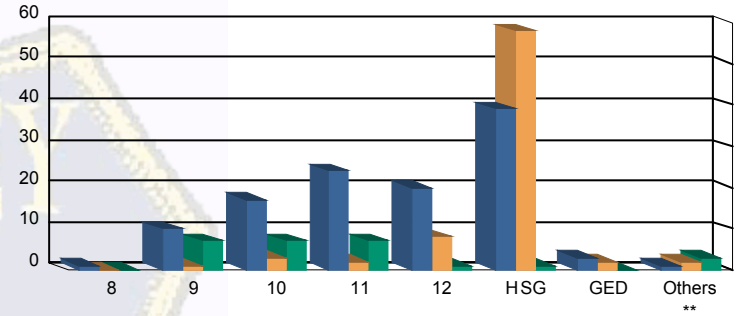
Yes	59 (52.68%)	3 (100.00%)	31 (41.33%)	1 (100.00%)	10 (41.67%)	0 0.00%	104 (47.93%)
No	44 (39.29%)	0 0.00%	34 (45.33%)	0 0.00%	12 (50.00%)	1 (50.00%)	91 (41.94%)
Pending	9 (8.04%)	0 0.00%	10 (13.33%)	0 0.00%	2 (8.33%)	1 (50.00%)	22 (10.14%)
Total	112 (100.00%)	3 (100.00%)	75 (100.00%)	1 (100.00%)	24 (100.00%)	2 (100.00%)	217 (100.00%)

Offense Categories

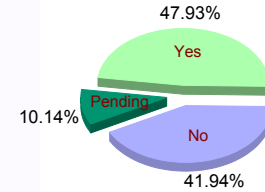
Drug	42 (5.45%)	0 0.00%	10 (4.76%)	0 0.00%	7 (8.14%)	0 0.00%	59 (5.43%)
Persons	213 (27.66%)	8 (47.06%)	115 (54.76%)	2 (100.00%)	18 (20.93%)	0 0.00%	356 (32.75%)
Property	133 (17.27%)	2 (11.76%)	20 (9.52%)	0 0.00%	14 (16.28%)	1 (50.00%)	170 (15.64%)
Public Order	91 (11.82%)	2 (11.76%)	13 (6.19%)	0 0.00%	8 (9.30%)	0 0.00%	114 (10.49%)
VOP	162 (21.04%)	3 (17.65%)	22 (10.48%)	0 0.00%	19 (22.09%)	0 0.00%	206 (18.95%)
Weapons	126 (16.36%)	2 (11.76%)	30 (14.29%)	0 0.00%	16 (18.60%)	1 (50.00%)	175 (16.10%)
Others Offenses	3 (0.39%)	0 0.00%	0 0.00%	0 0.00%	4 (4.65%)	0 0.00%	7 (0.64%)
Total *	770 (100.00%)	17 (100.00%)	210 (100.00%)	2 (100.00%)	86 (100.00%)	2 (100.00%)	1,087 (100.00%)

* Juveniles may have multiple offenses

Current Grade



Special Education



Offense Categories

