



# NJ Office of the Attorney General Juvenile Justice Commission



\*Statistics are for Friday, April 21, 2023

## Juvenile Demographics and Statistics

Race/ Ethnicity	COMMITTED				WAIVED				PROBATIONER				AFTERCARE				Total	
	MALE		FEMALE		MALE		FEMALE		MALE		FEMALE		MALE		FEMALE			
BLACK	88	78.57%	3	100.00%	37	49.33%	1	100.00%	18	66.67%	1	50.00%	70	76.09%	2	50.00%	220	69.62%
HISPANIC	19	16.96%	0	0.00%	25	33.33%	0	0.00%	5	18.52%	1	50.00%	13	14.13%	0	0.00%	63	19.94%
WHITE	5	4.46%	0	0.00%	13	17.33%	0	0.00%	3	11.11%	0	0.00%	7	7.61%	2	50.00%	30	9.49%
ASIAN	0	0.00%	0	0.00%	0	0.00%	0	0.00%	0	0.00%	0	0.00%	1	1.09%	0	0.00%	1	0.32%
Others	0	0.00%	0	0.00%	0	0.00%	0	0.00%	1	3.70%	0	0.00%	1	1.09%	0	0.00%	2	0.63%
Total	112	100.00%	3	100.00%	75	100.00%	1	100.00%	27	100.00%	2	100.00%	92	100.00%	4	100.00%	316	100.00%

## Age

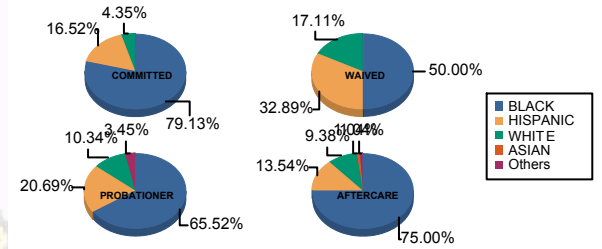
13 and Below	0	0.00%	0	0.00%	0	0.00%	0	0.00%	1	3.70%	0	0.00%	0	0.00%	0	0.00%	1	0.32%
15	1	0.89%	0	0.00%	0	0.00%	0	0.00%	4	14.81%	0	0.00%	0	0.00%	0	0.00%	5	1.58%
16	6	5.36%	1	33.33%	0	0.00%	0	0.00%	3	11.11%	2	100.00%	4	4.35%	0	0.00%	16	5.06%
17	25	22.32%	0	0.00%	3	4.00%	0	0.00%	9	33.33%	0	0.00%	6	6.52%	0	0.00%	43	13.61%
18	35	31.25%	2	66.67%	9	12.00%	0	0.00%	9	33.33%	0	0.00%	10	10.87%	1	25.00%	66	20.89%
19	23	20.54%	0	0.00%	21	28.00%	1	100.00%	1	3.70%	0	0.00%	9	9.78%	2	50.00%	57	18.04%
20 and Above	22	19.64%	0	0.00%	42	56.00%	0	0.00%	0	0.00%	0	0.00%	63	68.48%	1	25.00%	128	40.51%
Total	112	100.00%	3	100.00%	75	100.00%	1	100.00%	27	100.00%	2	100.00%	92	100.00%	4	100.00%	316	100.00%

Average Age	18.52	17.33	20.08	19.00	16.85	16.00	21.85	20.00	19.71
-------------	-------	-------	-------	-------	-------	-------	-------	-------	-------

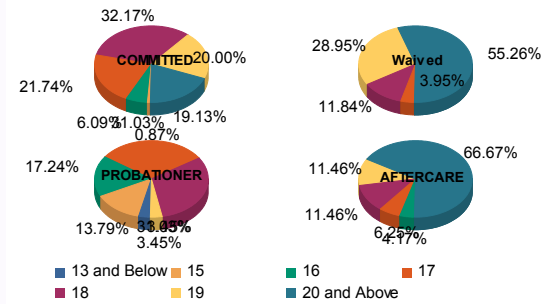
## Sentencing County

ATL	4	3.57%	0	0.00%	4	5.33%	0	0.00%	6	22.22%	0	0.00%	1	1.09%	0	0.00%	15	4.75%
BER	2	1.79%	0	0.00%	0	0.00%	0	0.00%	0	0.00%	0	0.00%	2	2.17%	0	0.00%	4	1.27%
BUR	6	5.36%	0	0.00%	2	2.67%	0	0.00%	2	7.41%	0	0.00%	7	7.61%	0	0.00%	17	5.38%
CAM	32	28.57%	1	33.33%	6	8.00%	1	100.00%	5	18.52%	0	0.00%	13	14.13%	4	100.00%	62	19.62%
CUM	4	3.57%	0	0.00%	2	2.67%	0	0.00%	1	3.70%	0	0.00%	0	0.00%	0	0.00%	7	2.22%
ESS	24	21.43%	1	33.33%	1	1.33%	0	0.00%	0	0.00%	0	0.00%	19	20.65%	0	0.00%	45	14.24%
GLO	1	0.89%	0	0.00%	0	0.00%	0	0.00%	1	3.70%	0	0.00%	1	1.09%	0	0.00%	3	0.95%
HUD	5	4.46%	1	33.33%	4	5.33%	0	0.00%	1	3.70%	0	0.00%	1	1.09%	0	0.00%	12	3.80%
HUN	1	0.89%	0	0.00%	0	0.00%	0	0.00%	0	0.00%	0	0.00%	1	1.09%	0	0.00%	2	0.63%
MER	3	2.68%	0	0.00%	4	5.33%	0	0.00%	0	0.00%	0	0.00%	3	3.26%	0	0.00%	10	3.16%
MID	10	8.93%	0	0.00%	21	28.00%	0	0.00%	1	3.70%	0	0.00%	15	16.30%	0	0.00%	47	14.87%
MON	2	1.79%	0	0.00%	4	5.33%	0	0.00%	2	7.41%	0	0.00%	2	2.17%	0	0.00%	10	3.16%
MOR	1	0.89%	0	0.00%	0	0.00%	0	0.00%	0	0.00%	0	0.00%	0	0.00%	0	0.00%	1	0.32%
OCE	1	0.89%	0	0.00%	2	2.67%	0	0.00%	2	7.41%	0	0.00%	3	3.26%	0	0.00%	8	2.53%
PAS	9	8.04%	0	0.00%	19	25.33%	0	0.00%	3	11.11%	2	100.00%	13	14.13%	0	0.00%	46	14.56%
SAL	0	0.00%	0	0.00%	3	4.00%	0	0.00%	0	0.00%	0	0.00%	0	0.00%	0	0.00%	3	0.95%
SOM	0	0.00%	0	0.00%	0	0.00%	0	0.00%	0	0.00%	0	0.00%	1	1.09%	0	0.00%	1	0.32%
UNI	6	5.36%	0	0.00%	3	4.00%	0	0.00%	2	7.41%	0	0.00%	6	6.52%	0	0.00%	17	5.38%
WAR	1	0.89%	0	0.00%	0	0.00%	0	0.00%	1	3.70%	0	0.00%	0	0.00%	0	0.00%	2	0.63%
OTHER	0	0.00%	0	0.00%	0	0.00%	0	0.00%	0	0.00%	0	0.00%	4	4.35%	0	0.00%	4	1.27%
Total	112	100.00%	3	100.00%	75	100.00%	1	100.00%	27	100.00%	2	100.00%	92	100.00%	4	100.00%	316	100.00%

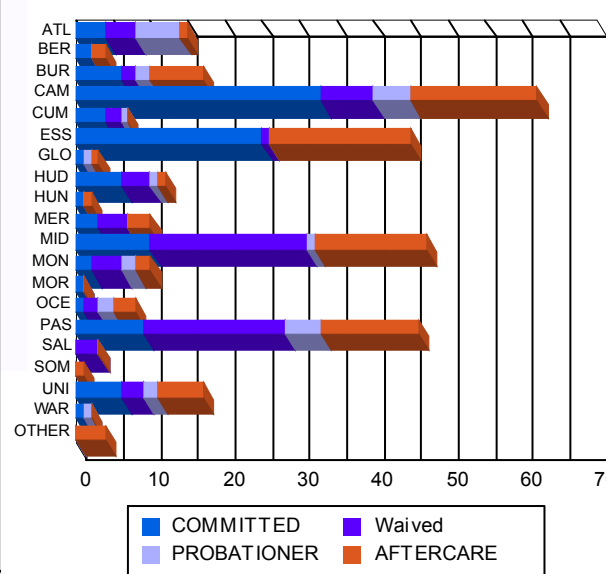
## Race/Ethnicity Grouping



## Age Grouping



## Count of Juveniles By Sentencing County





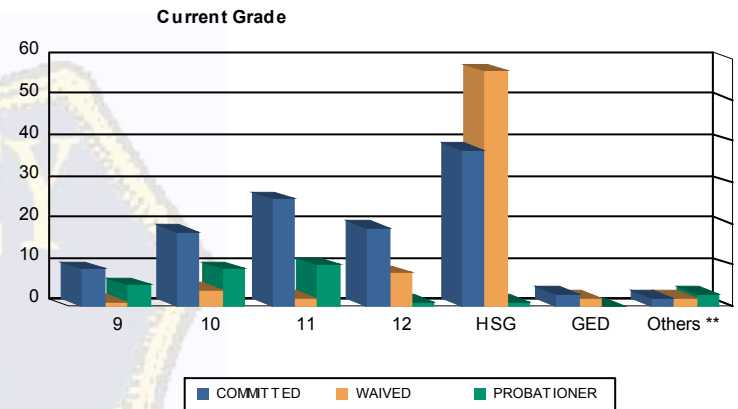
# NJ Office of the Attorney General Juvenile Justice Commission



\*Statistics are for Friday, April 21, 2023

## Juvenile Demographics and Statistics

Current Grade	COMMITTED		WAIVED		PROBATIONER		Total
	MALE	FEMALE	MALE	FEMALE	MALE	FEMALE	
9	9 (8.04%)	0 0.00%	1 (1.33%)	0 0.00%	5 (18.52%)	0 0.00%	15 (6.82%)
10	17 (15.18%)	1 (33.33%)	4 (5.33%)	0 0.00%	8 (29.63%)	1 (50.00%)	31 (14.09%)
11	25 (22.32%)	1 (33.33%)	2 (2.67%)	0 0.00%	9 (33.33%)	1 (50.00%)	38 (17.27%)
12	19 (16.96%)	0 0.00%	8 (10.67%)	0 0.00%	1 (3.70%)	0 0.00%	28 (12.73%)
HSG	37 (33.04%)	1 (33.33%)	56 (74.67%)	1 (100.00%)	1 (3.70%)	0 0.00%	96 (43.64%)
GED	3 (2.68%)	0 0.00%	2 (2.67%)	0 0.00%	0 0.00%	0 0.00%	5 (2.27%)
Others **	2 (1.79%)	0 0.00%	2 (2.67%)	0 0.00%	3 (11.11%)	0 0.00%	7 (3.18%)
Total	112 (100.00%)	3 (100.00%)	75 (100.00%)	1 (100.00%)	27 (100.00%)	2 (100.00%)	220 (100.00%)

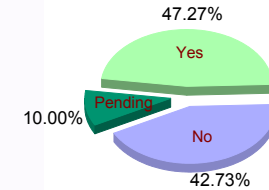


\*\* Includes Aged Out Juveniles and Pending Records

## Special Education Services

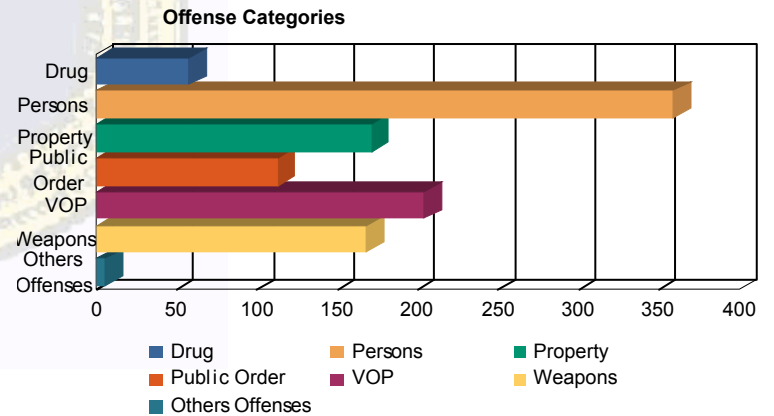
Yes	59 (52.68%)	2 (66.67%)	30 (40.00%)	1 (100.00%)	12 (44.44%)	0 0.00%	104 (47.27%)
No	44 (39.29%)	1 (33.33%)	35 (46.67%)	0 0.00%	12 (44.44%)	2 (100.00%)	94 (42.73%)
Pending	9 (8.04%)	0 0.00%	10 (13.33%)	0 0.00%	3 (11.11%)	0 0.00%	22 (10.00%)
Total	112 (100.00%)	3 (100.00%)	75 (100.00%)	1 (100.00%)	27 (100.00%)	2 (100.00%)	220 (100.00%)

## Special Education



## Offense Categories

Drug	42 (5.52%)	0 0.00%	10 (4.76%)	0 0.00%	6 (6.90%)	0 0.00%	58 (5.38%)
Persons	214 (28.12%)	8 (47.06%)	115 (54.76%)	2 (100.00%)	20 (22.99%)	0 0.00%	359 (33.27%)
Property	133 (17.48%)	2 (11.76%)	20 (9.52%)	0 0.00%	15 (17.24%)	1 (50.00%)	171 (15.85%)
Public Order	91 (11.96%)	2 (11.76%)	13 (6.19%)	0 0.00%	7 (8.05%)	0 0.00%	113 (10.47%)
VOP	160 (21.02%)	3 (17.65%)	22 (10.48%)	0 0.00%	19 (21.84%)	0 0.00%	204 (18.91%)
Weapons	119 (15.64%)	2 (11.76%)	30 (14.29%)	0 0.00%	16 (18.39%)	1 (50.00%)	168 (15.57%)
Others Offenses	2 (0.26%)	0 0.00%	0 0.00%	0 0.00%	4 (4.60%)	0 0.00%	6 (0.56%)
Total *	761 (100.00%)	17 (100.00%)	210 (100.00%)	2 (100.00%)	87 (100.00%)	2 (100.00%)	1,079 (100.00%)



\* Juveniles may have multiple offenses