



# NJ Office of the Attorney General Juvenile Justice Commission



\*Statistics are for Friday, April 28, 2023

## Juvenile Demographics and Statistics

Race/ Ethnicity	COMMITTED				WAIVED				PROBATIONER				AFTERCARE				Total	
	MALE		FEMALE		MALE		FEMALE		MALE		FEMALE		MALE		FEMALE			
BLACK	85	77.98%	3	100.00%	37	49.33%	1	100.00%	17	65.38%	1	50.00%	70	76.09%	2	50.00%	216	69.23%
HISPANIC	19	17.43%	0	0.00%	26	34.67%	0	0.00%	5	19.23%	1	50.00%	13	14.13%	0	0.00%	64	20.51%
WHITE	5	4.59%	0	0.00%	12	16.00%	0	0.00%	3	11.54%	0	0.00%	7	7.61%	2	50.00%	29	9.29%
ASIAN	0	0.00%	0	0.00%	0	0.00%	0	0.00%	0	0.00%	0	0.00%	1	1.09%	0	0.00%	1	0.32%
Others	0	0.00%	0	0.00%	0	0.00%	0	0.00%	1	3.85%	0	0.00%	1	1.09%	0	0.00%	2	0.64%
Total	109	100.00%	3	100.00%	75	100.00%	1	100.00%	26	100.00%	2	100.00%	92	100.00%	4	100.00%	312	100.00%

## Age

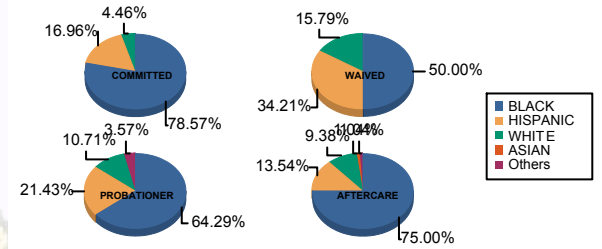
13 and Below	0	0.00%	0	0.00%	0	0.00%	0	0.00%	1	3.85%	0	0.00%	0	0.00%	0	0.00%	1	0.32%
15	0	0.00%	0	0.00%	0	0.00%	0	0.00%	4	15.38%	0	0.00%	0	0.00%	0	0.00%	4	1.28%
16	5	4.59%	1	33.33%	0	0.00%	0	0.00%	3	11.54%	2	100.00%	5	5.43%	0	0.00%	16	5.13%
17	25	22.94%	0	0.00%	3	4.00%	0	0.00%	8	30.77%	0	0.00%	6	6.52%	0	0.00%	42	13.46%
18	35	32.11%	2	66.67%	9	12.00%	0	0.00%	9	34.62%	0	0.00%	9	9.78%	1	25.00%	65	20.83%
19	22	20.18%	0	0.00%	20	26.67%	1	100.00%	1	3.85%	0	0.00%	9	9.78%	2	50.00%	55	17.63%
20 and Above	22	20.18%	0	0.00%	43	57.33%	0	0.00%	0	0.00%	0	0.00%	63	68.48%	1	25.00%	129	41.35%
Total	109	100.00%	3	100.00%	75	100.00%	1	100.00%	26	100.00%	2	100.00%	92	100.00%	4	100.00%	312	100.00%

Average Age	18.56	17.33	20.09	19.00	16.85	16.00	21.76	20.00	19.72
-------------	-------	-------	-------	-------	-------	-------	-------	-------	-------

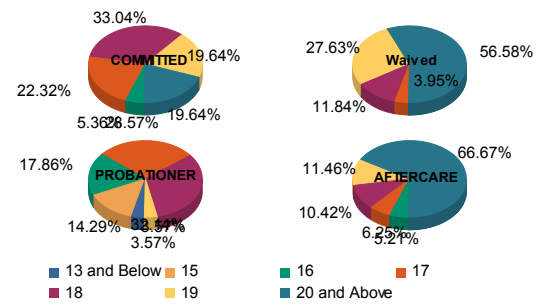
## Sentencing County

ATL	4	3.67%	0	0.00%	4	5.33%	0	0.00%	6	23.08%	0	0.00%	1	1.09%	0	0.00%	15	4.81%
BER	2	1.83%	0	0.00%	0	0.00%	0	0.00%	0	0.00%	0	0.00%	1	1.09%	0	0.00%	3	0.96%
BUR	6	5.50%	0	0.00%	2	2.67%	0	0.00%	2	7.69%	0	0.00%	7	7.61%	0	0.00%	17	5.45%
CAM	31	28.44%	1	33.33%	6	8.00%	1	100.00%	4	15.38%	0	0.00%	14	15.22%	4	100.00%	61	19.55%
CUM	4	3.67%	0	0.00%	2	2.67%	0	0.00%	1	3.85%	0	0.00%	0	0.00%	0	0.00%	7	2.24%
ESS	24	22.02%	1	33.33%	1	1.33%	0	0.00%	0	0.00%	0	0.00%	18	19.57%	0	0.00%	44	14.10%
GLO	1	0.92%	0	0.00%	0	0.00%	0	0.00%	1	3.85%	0	0.00%	1	1.09%	0	0.00%	3	0.96%
HUD	5	4.59%	1	33.33%	4	5.33%	0	0.00%	1	3.85%	0	0.00%	1	1.09%	0	0.00%	12	3.85%
HUN	1	0.92%	0	0.00%	0	0.00%	0	0.00%	0	0.00%	0	0.00%	1	1.09%	0	0.00%	2	0.64%
MER	3	2.75%	0	0.00%	4	5.33%	0	0.00%	0	0.00%	0	0.00%	3	3.26%	0	0.00%	10	3.21%
MID	10	9.17%	0	0.00%	21	28.00%	0	0.00%	1	3.85%	0	0.00%	15	16.30%	0	0.00%	47	15.06%
MON	2	1.83%	0	0.00%	4	5.33%	0	0.00%	2	7.69%	0	0.00%	2	2.17%	0	0.00%	10	3.21%
MOR	1	0.92%	0	0.00%	0	0.00%	0	0.00%	0	0.00%	0	0.00%	0	0.00%	0	0.00%	1	0.32%
OCE	1	0.92%	0	0.00%	2	2.67%	0	0.00%	2	7.69%	0	0.00%	3	3.26%	0	0.00%	8	2.56%
PAS	9	8.26%	0	0.00%	19	25.33%	0	0.00%	3	11.54%	2	100.00%	13	14.13%	0	0.00%	46	14.74%
SAL	0	0.00%	0	0.00%	3	4.00%	0	0.00%	0	0.00%	0	0.00%	0	0.00%	0	0.00%	3	0.96%
SOM	0	0.00%	0	0.00%	0	0.00%	0	0.00%	0	0.00%	0	0.00%	1	1.09%	0	0.00%	1	0.32%
UNI	4	3.67%	0	0.00%	3	4.00%	0	0.00%	2	7.69%	0	0.00%	7	7.61%	0	0.00%	16	5.13%
WAR	1	0.92%	0	0.00%	0	0.00%	0	0.00%	1	3.85%	0	0.00%	0	0.00%	0	0.00%	2	0.64%
OTHER	0	0.00%	0	0.00%	0	0.00%	0	0.00%	0	0.00%	0	0.00%	4	4.35%	0	0.00%	4	1.28%
Total	109	100.00%	3	100.00%	75	100.00%	1	100.00%	26	100.00%	2	100.00%	92	100.00%	4	100.00%	312	100.00%

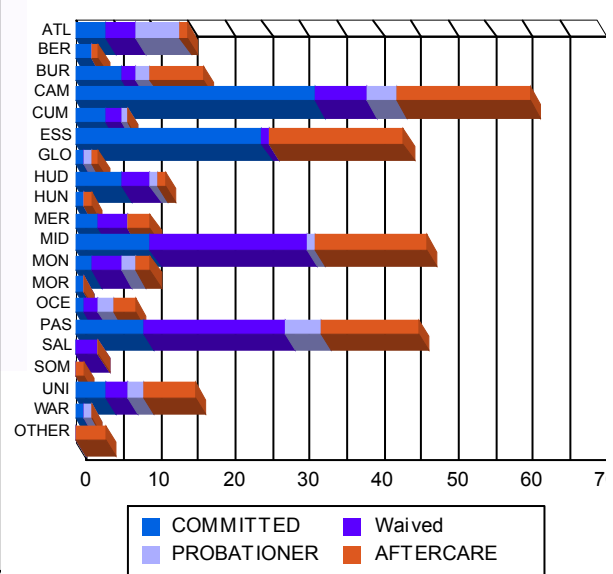
## Race/Ethnicity Grouping



## Age Grouping



## Count of Juveniles By Sentencing County





# NJ Office of the Attorney General Juvenile Justice Commission



\*Statistics are for Friday, April 28, 2023

## Juvenile Demographics and Statistics

Current Grade	COMMITTED		WAIVED		PROBATIONER		Total
	MALE	FEMALE	MALE	FEMALE	MALE	FEMALE	
7	0 (0.00%)	0 (0.00%)	0 (0.00%)	0 (0.00%)	1 (3.85%)	0 (0.00%)	1 (0.46%)
9	11 (10.09%)	0 (0.00%)	1 (1.33%)	0 (0.00%)	6 (23.08%)	0 (0.00%)	18 (8.33%)
10	16 (14.68%)	1 (33.33%)	2 (2.67%)	0 (0.00%)	8 (30.77%)	1 (50.00%)	28 (12.96%)
11	25 (22.94%)	1 (33.33%)	4 (5.33%)	0 (0.00%)	8 (30.77%)	1 (50.00%)	39 (18.06%)
12	17 (15.60%)	0 (0.00%)	8 (10.67%)	0 (0.00%)	2 (7.69%)	0 (0.00%)	27 (12.50%)
HSG	37 (33.94%)	1 (33.33%)	56 (74.67%)	1 (100.00%)	1 (3.85%)	0 (0.00%)	96 (44.44%)
GED	3 (2.75%)	0 (0.00%)	2 (2.67%)	0 (0.00%)	0 (0.00%)	0 (0.00%)	5 (2.31%)
Others **	0 (0.00%)	0 (0.00%)	2 (2.67%)	0 (0.00%)	0 (0.00%)	0 (0.00%)	2 (0.93%)
Total	109 (100.00%)	3 (100.00%)	75 (100.00%)	1 (100.00%)	26 (100.00%)	2 (100.00%)	216 (100.00%)

\*\* Includes Aged Out Juveniles and Pending Records

## Special Education Services

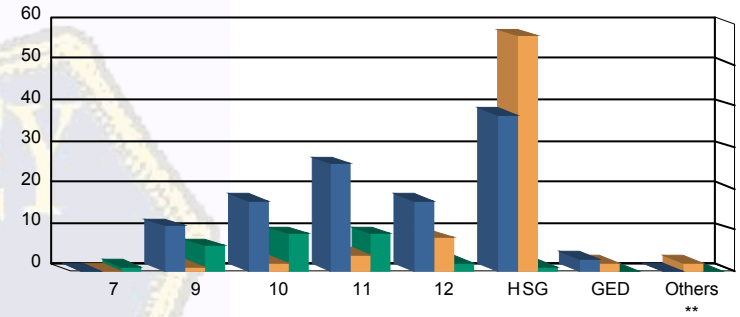
Yes	56 (51.38%)	2 (66.67%)	30 (40.00%)	1 (100.00%)	13 (50.00%)	0 (0.00%)	102 (47.22%)
No	46 (42.20%)	1 (33.33%)	35 (46.67%)	0 (0.00%)	13 (50.00%)	2 (100.00%)	97 (44.91%)
Pending	7 (6.42%)	0 (0.00%)	10 (13.33%)	0 (0.00%)	0 (0.00%)	0 (0.00%)	17 (7.87%)
Total	109 (100.00%)	3 (100.00%)	75 (100.00%)	1 (100.00%)	26 (100.00%)	2 (100.00%)	216 (100.00%)

## Offense Categories

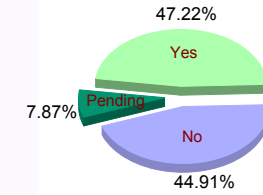
Drug	42 (5.50%)	0 (0.00%)	10 (4.57%)	0 (0.00%)	6 (7.14%)	0 (0.00%)	58 (5.34%)
Persons	214 (28.05%)	8 (47.06%)	119 (54.34%)	2 (100.00%)	19 (22.62%)	0 (0.00%)	362 (33.30%)
Property	131 (17.17%)	2 (11.76%)	21 (9.59%)	0 (0.00%)	14 (16.67%)	1 (50.00%)	169 (15.55%)
Public Order	92 (12.06%)	2 (11.76%)	13 (5.94%)	0 (0.00%)	7 (8.33%)	0 (0.00%)	114 (10.49%)
VOP	160 (20.97%)	3 (17.65%)	22 (10.05%)	0 (0.00%)	18 (21.43%)	0 (0.00%)	203 (18.68%)
Weapons	122 (15.99%)	2 (11.76%)	34 (15.53%)	0 (0.00%)	16 (19.05%)	1 (50.00%)	175 (16.10%)
Others Offenses	2 (0.26%)	0 (0.00%)	0 (0.00%)	0 (0.00%)	4 (4.76%)	0 (0.00%)	6 (0.55%)
Total *	763 (100.00%)	17 (100.00%)	219 (100.00%)	2 (100.00%)	84 (100.00%)	2 (100.00%)	1,087 (100.00%)

\* Juveniles may have multiple offenses

Current Grade



Special Education



Offense Categories

