



NJ Office of the Attorney General Juvenile Justice Commission



*Statistics are for Friday, May 5, 2023

Juvenile Demographics and Statistics

Race/ Ethnicity	COMMITTED				WAIVED				PROBATIONER				AFTERCARE				Total	
	MALE		FEMALE		MALE		FEMALE		MALE		FEMALE		MALE		FEMALE			
BLACK	86	76.79%	3	100.00%	41	52.56%	1	100.00%	17	65.38%	1	50.00%	68	75.56%	2	50.00%	219	69.30%
HISPANIC	20	17.86%	0	0.00%	25	32.05%	0	0.00%	5	19.23%	1	50.00%	13	14.44%	0	0.00%	64	20.25%
WHITE	6	5.36%	0	0.00%	12	15.38%	0	0.00%	3	11.54%	0	0.00%	7	7.78%	2	50.00%	30	9.49%
ASIAN	0	0.00%	0	0.00%	0	0.00%	0	0.00%	0	0.00%	0	0.00%	1	1.11%	0	0.00%	1	0.32%
Others	0	0.00%	0	0.00%	0	0.00%	0	0.00%	1	3.85%	0	0.00%	1	1.11%	0	0.00%	2	0.63%
Total	112	100.00%	3	100.00%	78	100.00%	1	100.00%	26	100.00%	2	100.00%	90	100.00%	4	100.00%	316	100.00%

Age

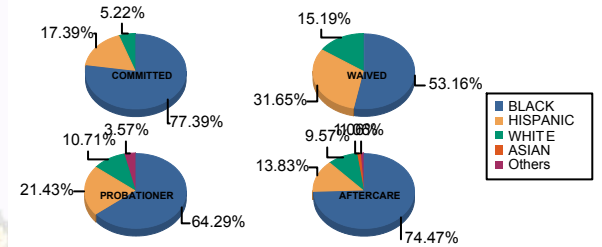
13 and Below	0	0.00%	0	0.00%	0	0.00%	0	0.00%	1	3.85%	0	0.00%	0	0.00%	0	0.00%	1	0.32%
15	1	0.89%	0	0.00%	0	0.00%	0	0.00%	4	15.38%	0	0.00%	0	0.00%	0	0.00%	5	1.58%
16	5	4.46%	1	33.33%	0	0.00%	0	0.00%	3	11.54%	2	100.00%	5	5.56%	0	0.00%	16	5.06%
17	26	23.21%	0	0.00%	3	3.85%	0	0.00%	8	30.77%	0	0.00%	4	4.44%	0	0.00%	41	12.97%
18	38	33.93%	2	66.67%	9	11.54%	0	0.00%	9	34.62%	0	0.00%	8	8.89%	1	25.00%	67	21.20%
19	20	17.86%	0	0.00%	21	26.92%	1	100.00%	1	3.85%	0	0.00%	11	12.22%	2	50.00%	56	17.72%
20 and Above	22	19.64%	0	0.00%	45	57.69%	0	0.00%	0	0.00%	0	0.00%	62	68.89%	1	25.00%	130	41.14%
Total	112	100.00%	3	100.00%	78	100.00%	1	100.00%	26	100.00%	2	100.00%	90	100.00%	4	100.00%	316	100.00%

Average Age	18.49	17.33	20.10	19.00	16.85	16.00	21.89	20.00	19.72
-------------	-------	-------	-------	-------	-------	-------	-------	-------	-------

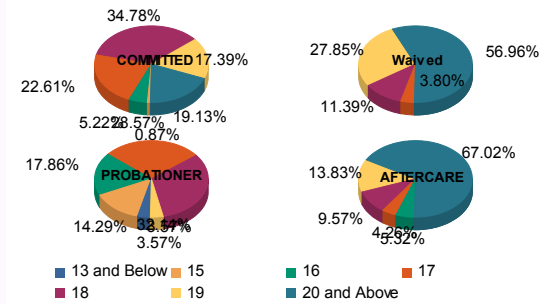
Sentencing County

ATL	4	3.57%	0	0.00%	5	6.41%	0	0.00%	6	23.08%	0	0.00%	1	1.11%	0	0.00%	16	5.06%
BER	3	2.68%	0	0.00%	0	0.00%	0	0.00%	0	0.00%	0	0.00%	1	1.11%	0	0.00%	4	1.27%
BUR	6	5.36%	0	0.00%	2	2.56%	0	0.00%	2	7.69%	0	0.00%	7	7.78%	0	0.00%	17	5.38%
CAM	31	27.68%	1	33.33%	6	7.69%	1	100.00%	4	15.38%	0	0.00%	14	15.56%	4	100.00%	61	19.30%
CUM	4	3.57%	0	0.00%	2	2.56%	0	0.00%	1	3.85%	0	0.00%	0	0.00%	0	0.00%	7	2.22%
ESS	25	22.32%	1	33.33%	4	5.13%	0	0.00%	0	0.00%	0	0.00%	18	20.00%	0	0.00%	48	15.19%
GLO	1	0.89%	0	0.00%	0	0.00%	0	0.00%	1	3.85%	0	0.00%	1	1.11%	0	0.00%	3	0.95%
HUD	5	4.46%	1	33.33%	4	5.13%	0	0.00%	1	3.85%	0	0.00%	1	1.11%	0	0.00%	12	3.80%
HUN	1	0.89%	0	0.00%	0	0.00%	0	0.00%	0	0.00%	0	0.00%	1	1.11%	0	0.00%	2	0.63%
MER	3	2.68%	0	0.00%	4	5.13%	0	0.00%	0	0.00%	0	0.00%	3	3.33%	0	0.00%	10	3.16%
MID	9	8.04%	0	0.00%	22	28.21%	0	0.00%	1	3.85%	0	0.00%	15	16.67%	0	0.00%	47	14.87%
MON	2	1.79%	0	0.00%	4	5.13%	0	0.00%	2	7.69%	0	0.00%	2	2.22%	0	0.00%	10	3.16%
MOR	1	0.89%	0	0.00%	0	0.00%	0	0.00%	0	0.00%	0	0.00%	0	0.00%	0	0.00%	1	0.32%
OCE	1	0.89%	0	0.00%	2	2.56%	0	0.00%	2	7.69%	0	0.00%	3	3.33%	0	0.00%	8	2.53%
PAS	11	9.82%	0	0.00%	17	21.79%	0	0.00%	3	11.54%	2	100.00%	12	13.33%	0	0.00%	45	14.24%
SAL	0	0.00%	0	0.00%	3	3.85%	0	0.00%	0	0.00%	0	0.00%	0	0.00%	0	0.00%	3	0.95%
SOM	0	0.00%	0	0.00%	0	0.00%	0	0.00%	0	0.00%	0	0.00%	1	1.11%	0	0.00%	1	0.32%
UNI	4	3.57%	0	0.00%	3	3.85%	0	0.00%	2	7.69%	0	0.00%	7	7.78%	0	0.00%	16	5.06%
WAR	1	0.89%	0	0.00%	0	0.00%	0	0.00%	1	3.85%	0	0.00%	0	0.00%	0	0.00%	2	0.63%
OTHER	0	0.00%	0	0.00%	0	0.00%	0	0.00%	0	0.00%	0	0.00%	3	3.33%	0	0.00%	3	0.95%
Total	112	100.00%	3	100.00%	78	100.00%	1	100.00%	26	100.00%	2	100.00%	90	100.00%	4	100.00%	316	100.00%

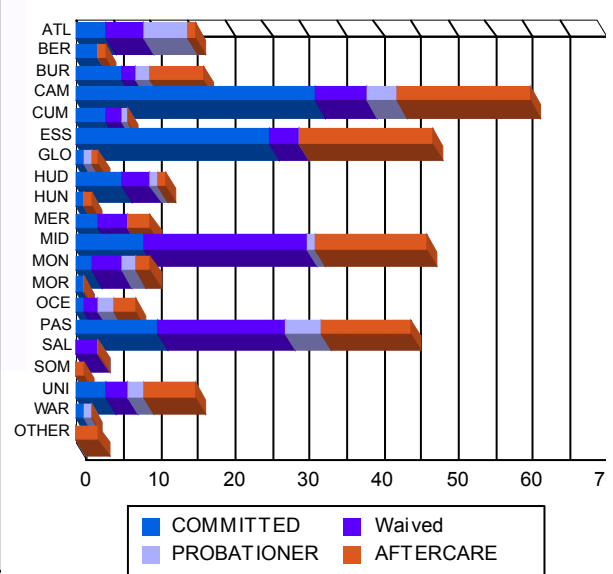
Race/Ethnicity Grouping



Age Grouping



Count of Juveniles By Sentencing County





NJ Office of the Attorney General Juvenile Justice Commission



*Statistics are for Friday, May 5, 2023

Juvenile Demographics and Statistics

Current Grade	COMMITTED		WAIVED		PROBATIONER		Total
	MALE	FEMALE	MALE	FEMALE	MALE	FEMALE	
7	0 (0.00%)	0 (0.00%)	0 (0.00%)	0 (0.00%)	1 (3.85%)	0 (0.00%)	1 (0.45%)
9	10 (8.93%)	0 (0.00%)	1 (1.28%)	0 (0.00%)	6 (23.08%)	0 (0.00%)	17 (7.66%)
10	17 (15.18%)	1 (33.33%)	2 (2.56%)	0 (0.00%)	8 (30.77%)	1 (50.00%)	29 (13.06%)
11	24 (21.43%)	1 (33.33%)	4 (5.13%)	0 (0.00%)	8 (30.77%)	1 (50.00%)	38 (17.12%)
12	18 (16.07%)	0 (0.00%)	9 (11.54%)	0 (0.00%)	2 (7.69%)	0 (0.00%)	29 (13.06%)
HSG	38 (33.93%)	1 (33.33%)	58 (74.36%)	1 (100.00%)	1 (3.85%)	0 (0.00%)	99 (44.59%)
GED	3 (2.68%)	0 (0.00%)	2 (2.56%)	0 (0.00%)	0 (0.00%)	0 (0.00%)	5 (2.25%)
Others **	2 (1.79%)	0 (0.00%)	2 (2.56%)	0 (0.00%)	0 (0.00%)	0 (0.00%)	4 (1.80%)
Total	112 (100.00%)	3 (100.00%)	78 (100.00%)	1 (100.00%)	26 (100.00%)	2 (100.00%)	222 (100.00%)

** Includes Aged Out Juveniles and Pending Records

Special Education Services

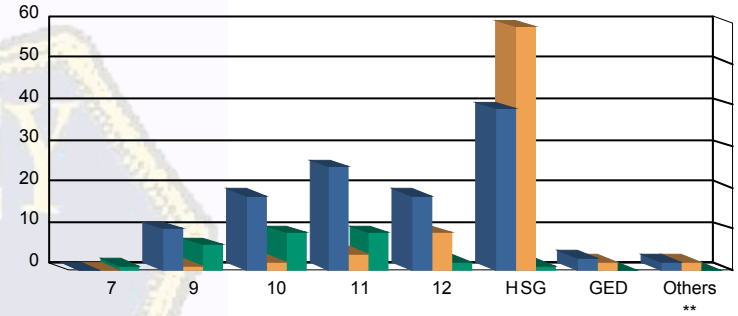
Yes	57 (50.89%)	2 (66.67%)	30 (38.46%)	1 (100.00%)	13 (50.00%)	0 (0.00%)	103 (46.40%)
No	46 (41.07%)	1 (33.33%)	34 (43.59%)	0 (0.00%)	13 (50.00%)	2 (100.00%)	96 (43.24%)
Pending	9 (8.04%)	0 (0.00%)	14 (17.95%)	0 (0.00%)	0 (0.00%)	0 (0.00%)	23 (10.36%)
Total	112 (100.00%)	3 (100.00%)	78 (100.00%)	1 (100.00%)	26 (100.00%)	2 (100.00%)	222 (100.00%)

Offense Categories

Drug	42 (5.54%)	0 (0.00%)	11 (4.82%)	0 (0.00%)	6 (6.90%)	0 (0.00%)	59 (5.39%)
Persons	215 (28.36%)	8 (47.06%)	119 (52.19%)	2 (100.00%)	20 (22.99%)	0 (0.00%)	364 (33.27%)
Property	130 (17.15%)	2 (11.76%)	23 (10.09%)	0 (0.00%)	15 (17.24%)	1 (50.00%)	171 (15.63%)
Public Order	90 (11.87%)	2 (11.76%)	14 (6.14%)	0 (0.00%)	7 (8.05%)	0 (0.00%)	113 (10.33%)
VOP	158 (20.84%)	3 (17.65%)	24 (10.53%)	0 (0.00%)	18 (20.69%)	0 (0.00%)	203 (18.56%)
Weapons	122 (16.09%)	2 (11.76%)	36 (15.79%)	0 (0.00%)	17 (19.54%)	1 (50.00%)	178 (16.27%)
Others Offenses	1 (0.13%)	0 (0.00%)	1 (0.44%)	0 (0.00%)	4 (4.60%)	0 (0.00%)	6 (0.55%)
Total *	758 (100.00%)	17 (100.00%)	228 (100.00%)	2 (100.00%)	87 (100.00%)	2 (100.00%)	1,094 (100.00%)

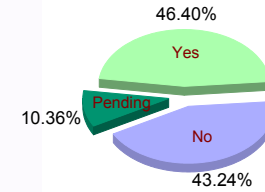
* Juveniles may have multiple offenses

Current Grade



COMMITTED WAIVED PROBATIONER

Special Education



Offense Categories

