



NJ Office of the Attorney General Juvenile Justice Commission



*Statistics are for Friday, May 12, 2023

Juvenile Demographics and Statistics

Race/ Ethnicity	COMMITTED				WAIVED				PROBATIONER				AFTERCARE				Total	
	MALE		FEMALE		MALE		FEMALE		MALE		FEMALE		MALE		FEMALE			
BLACK	86	77.48%	3	100.00%	42	53.85%	1	100.00%	17	65.38%	1	50.00%	69	75.00%	1	33.33%	220	69.62%
HISPANIC	19	17.12%	0	0.00%	24	30.77%	0	0.00%	5	19.23%	1	50.00%	14	15.22%	0	0.00%	63	19.94%
WHITE	6	5.41%	0	0.00%	12	15.38%	0	0.00%	3	11.54%	0	0.00%	7	7.61%	2	66.67%	30	9.49%
ASIAN	0	0.00%	0	0.00%	0	0.00%	0	0.00%	0	0.00%	0	0.00%	1	1.09%	0	0.00%	1	0.32%
Others	0	0.00%	0	0.00%	0	0.00%	0	0.00%	1	3.85%	0	0.00%	1	1.09%	0	0.00%	2	0.63%
Total	111	100.00%	3	100.00%	78	100.00%	1	100.00%	26	100.00%	2	100.00%	92	100.00%	3	100.00%	316	100.00%

Age

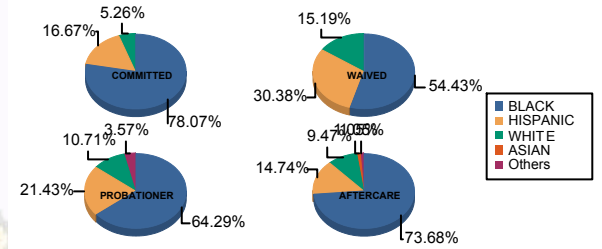
14	0	0.00%	0	0.00%	0	0.00%	0	0.00%	1	3.85%	0	0.00%	0	0.00%	0	0.00%	1	0.32%
15	1	0.90%	0	0.00%	0	0.00%	0	0.00%	3	11.54%	0	0.00%	0	0.00%	0	0.00%	4	1.27%
16	5	4.50%	1	33.33%	0	0.00%	0	0.00%	4	15.38%	2	100.00%	5	5.43%	0	0.00%	17	5.38%
17	27	24.32%	0	0.00%	3	3.85%	0	0.00%	8	30.77%	0	0.00%	4	4.35%	0	0.00%	42	13.29%
18	38	34.23%	2	66.67%	10	12.82%	0	0.00%	9	34.62%	0	0.00%	8	8.70%	1	33.33%	68	21.52%
19	17	15.32%	0	0.00%	19	24.36%	1	100.00%	1	3.85%	0	0.00%	13	14.13%	1	33.33%	52	16.46%
20 and Above	23	20.72%	0	0.00%	46	58.97%	0	0.00%	0	0.00%	0	0.00%	62	67.39%	1	33.33%	132	41.77%
Total	111	100.00%	3	100.00%	78	100.00%	1	100.00%	26	100.00%	2	100.00%	92	100.00%	3	100.00%	316	100.00%

Average Age	18.48	17.33	20.10	19.00	16.92	16.00	21.83	20.33	19.72
-------------	-------	-------	-------	-------	-------	-------	-------	-------	-------

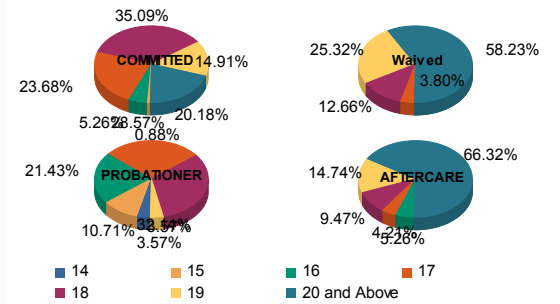
Sentencing County

ATL	4	3.60%	0	0.00%	6	7.69%	0	0.00%	6	23.08%	0	0.00%	1	1.09%	0	0.00%	17	5.38%
BER	3	2.70%	0	0.00%	0	0.00%	0	0.00%	0	0.00%	0	0.00%	1	1.09%	0	0.00%	4	1.27%
BUR	6	5.41%	0	0.00%	2	2.56%	0	0.00%	2	7.69%	0	0.00%	7	7.61%	0	0.00%	17	5.38%
CAM	30	27.03%	1	33.33%	5	6.41%	1	100.00%	4	15.38%	0	0.00%	15	16.30%	3	100.00%	59	18.67%
CUM	4	3.60%	0	0.00%	2	2.56%	0	0.00%	1	3.85%	0	0.00%	0	0.00%	0	0.00%	7	2.22%
ESS	26	23.42%	1	33.33%	4	5.13%	0	0.00%	0	0.00%	0	0.00%	18	19.57%	0	0.00%	49	15.51%
GLO	1	0.90%	0	0.00%	0	0.00%	0	0.00%	1	3.85%	0	0.00%	1	1.09%	0	0.00%	3	0.95%
HUD	5	4.50%	1	33.33%	4	5.13%	0	0.00%	1	3.85%	0	0.00%	1	1.09%	0	0.00%	12	3.80%
HUN	1	0.90%	0	0.00%	0	0.00%	0	0.00%	0	0.00%	0	0.00%	1	1.09%	0	0.00%	2	0.63%
MER	3	2.70%	0	0.00%	4	5.13%	0	0.00%	0	0.00%	0	0.00%	3	3.26%	0	0.00%	10	3.16%
MID	8	7.21%	0	0.00%	22	28.21%	0	0.00%	1	3.85%	0	0.00%	16	17.39%	0	0.00%	47	14.87%
MON	2	1.80%	0	0.00%	4	5.13%	0	0.00%	2	7.69%	0	0.00%	2	2.17%	0	0.00%	10	3.16%
MOR	1	0.90%	0	0.00%	0	0.00%	0	0.00%	0	0.00%	0	0.00%	0	0.00%	0	0.00%	1	0.32%
OCE	1	0.90%	0	0.00%	2	2.56%	0	0.00%	2	7.69%	0	0.00%	3	3.26%	0	0.00%	8	2.53%
PAS	11	9.91%	0	0.00%	17	21.79%	0	0.00%	3	11.54%	2	100.00%	12	13.04%	0	0.00%	45	14.24%
SAL	0	0.00%	0	0.00%	3	3.85%	0	0.00%	0	0.00%	0	0.00%	0	0.00%	0	0.00%	3	0.95%
SOM	0	0.00%	0	0.00%	0	0.00%	0	0.00%	0	0.00%	0	0.00%	1	1.09%	0	0.00%	1	0.32%
UNI	4	3.60%	0	0.00%	3	3.85%	0	0.00%	2	7.69%	0	0.00%	7	7.61%	0	0.00%	16	5.06%
WAR	1	0.90%	0	0.00%	0	0.00%	0	0.00%	1	3.85%	0	0.00%	0	0.00%	0	0.00%	2	0.63%
OTHER	0	0.00%	0	0.00%	0	0.00%	0	0.00%	0	0.00%	0	0.00%	3	3.26%	0	0.00%	3	0.95%
Total	111	100.00%	3	100.00%	78	100.00%	1	100.00%	26	100.00%	2	100.00%	92	100.00%	3	100.00%	316	100.00%

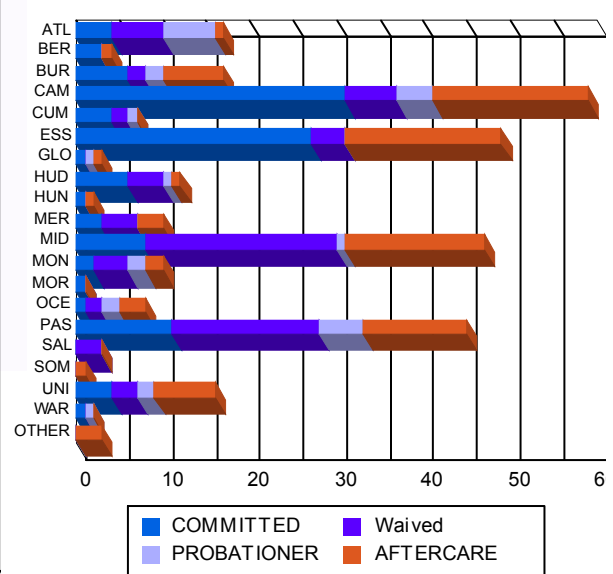
Race/Ethnicity Grouping



Age Grouping



Count of Juveniles By Sentencing County





NJ Office of the Attorney General Juvenile Justice Commission



*Statistics are for Friday, May 12, 2023

Juvenile Demographics and Statistics

Current Grade	COMMITTED		WAIVED		PROBATIONER		Total
	MALE	FEMALE	MALE	FEMALE	MALE	FEMALE	
7	0 (0.00%)	0 (0.00%)	0 (0.00%)	0 (0.00%)	1 (3.85%)	0 (0.00%)	1 (0.45%)
9	11 (9.91%)	0 (0.00%)	1 (1.28%)	0 (0.00%)	6 (23.08%)	0 (0.00%)	18 (8.14%)
10	18 (16.22%)	1 (33.33%)	2 (2.56%)	0 (0.00%)	8 (30.77%)	1 (50.00%)	30 (13.57%)
11	23 (20.72%)	1 (33.33%)	4 (5.13%)	0 (0.00%)	8 (30.77%)	1 (50.00%)	37 (16.74%)
12	16 (14.41%)	0 (0.00%)	9 (11.54%)	0 (0.00%)	2 (7.69%)	0 (0.00%)	27 (12.22%)
HSG	38 (34.23%)	1 (33.33%)	57 (73.08%)	1 (100.00%)	1 (3.85%)	0 (0.00%)	98 (44.34%)
GED	3 (2.70%)	0 (0.00%)	2 (2.56%)	0 (0.00%)	0 (0.00%)	0 (0.00%)	5 (2.26%)
Others **	2 (1.80%)	0 (0.00%)	3 (3.85%)	0 (0.00%)	0 (0.00%)	0 (0.00%)	5 (2.26%)
Total	111 (100.00%)	3 (100.00%)	78 (100.00%)	1 (100.00%)	26 (100.00%)	2 (100.00%)	221 (100.00%)

** Includes Aged Out Juveniles and Pending Records

Special Education Services

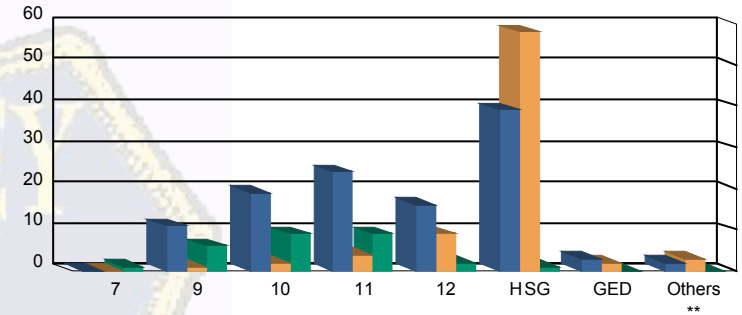
Yes	57 (51.35%)	2 (66.67%)	29 (37.18%)	1 (100.00%)	14 (53.85%)	0 (0.00%)	103 (46.61%)
No	46 (41.44%)	1 (33.33%)	34 (43.59%)	0 (0.00%)	12 (46.15%)	2 (100.00%)	95 (42.99%)
Pending	8 (7.21%)	0 (0.00%)	15 (19.23%)	0 (0.00%)	0 (0.00%)	0 (0.00%)	23 (10.41%)
Total	111 (100.00%)	3 (100.00%)	78 (100.00%)	1 (100.00%)	26 (100.00%)	2 (100.00%)	221 (100.00%)

Offense Categories

Drug	42 (5.48%)	0 (0.00%)	11 (4.80%)	0 (0.00%)	6 (6.90%)	0 (0.00%)	59 (5.35%)
Persons	216 (28.20%)	7 (43.75%)	120 (52.40%)	2 (100.00%)	20 (22.99%)	0 (0.00%)	365 (33.12%)
Property	132 (17.23%)	2 (12.50%)	23 (10.04%)	0 (0.00%)	15 (17.24%)	1 (50.00%)	173 (15.70%)
Public Order	92 (12.01%)	2 (12.50%)	14 (6.11%)	0 (0.00%)	7 (8.05%)	0 (0.00%)	115 (10.44%)
VOP	159 (20.76%)	3 (18.75%)	24 (10.48%)	0 (0.00%)	18 (20.69%)	0 (0.00%)	204 (18.51%)
Weapons	124 (16.19%)	2 (12.50%)	36 (15.72%)	0 (0.00%)	17 (19.54%)	1 (50.00%)	180 (16.33%)
Others Offenses	1 (0.13%)	0 (0.00%)	1 (0.44%)	0 (0.00%)	4 (4.60%)	0 (0.00%)	6 (0.54%)
Total *	766 (100.00%)	16 (100.00%)	229 (100.00%)	2 (100.00%)	87 (100.00%)	2 (100.00%)	1,102 (100.00%)

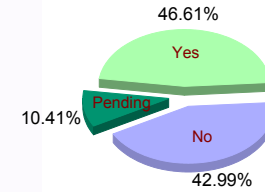
* Juveniles may have multiple offenses

Current Grade



■ COMMITTED ■ WAIVED ■ PROBATIONER

Special Education



Offense Categories

