



# NJ Office of the Attorney General Juvenile Justice Commission



\*Statistics are for Friday, June 2, 2023

## Juvenile Demographics and Statistics

Race/ Ethnicity	COMMITTED				WAIVED				PROBATIONER				AFTERCARE				Total	
	MALE		FEMALE		MALE		FEMALE		MALE		FEMALE		MALE		FEMALE			
BLACK	94	81.74%	3	100.00%	43	55.13%	1	100.00%	15	62.50%	1	50.00%	68	73.91%	1	33.33%	226	71.07%
HISPANIC	15	13.04%	0	0.00%	24	30.77%	0	0.00%	5	20.83%	1	50.00%	16	17.39%	0	0.00%	61	19.18%
WHITE	6	5.22%	0	0.00%	11	14.10%	0	0.00%	3	12.50%	0	0.00%	6	6.52%	2	66.67%	28	8.81%
ASIAN	0	0.00%	0	0.00%	0	0.00%	0	0.00%	0	0.00%	0	0.00%	1	1.09%	0	0.00%	1	0.31%
Others	0	0.00%	0	0.00%	0	0.00%	0	0.00%	1	4.17%	0	0.00%	1	1.09%	0	0.00%	2	0.63%
Total	115	100.00%	3	100.00%	78	100.00%	1	100.00%	24	100.00%	2	100.00%	92	100.00%	3	100.00%	318	100.00%

## Age

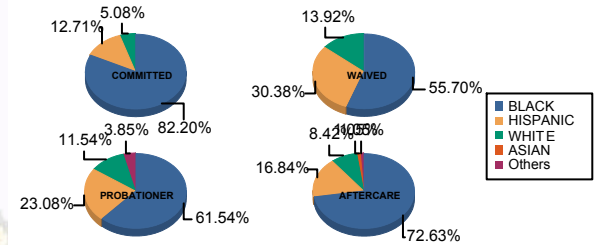
14	0	0.00%	0	0.00%	0	0.00%	0	0.00%	1	4.17%	0	0.00%	0	0.00%	0	0.00%	1	0.31%
15	2	1.74%	0	0.00%	0	0.00%	0	0.00%	3	12.50%	0	0.00%	0	0.00%	0	0.00%	5	1.57%
16	7	6.09%	1	33.33%	0	0.00%	0	0.00%	4	16.67%	2	100.00%	5	5.43%	0	0.00%	19	5.97%
17	25	21.74%	0	0.00%	3	3.85%	0	0.00%	8	33.33%	0	0.00%	7	7.61%	0	0.00%	43	13.52%
18	36	31.30%	2	66.67%	10	12.82%	0	0.00%	7	29.17%	0	0.00%	8	8.70%	1	33.33%	64	20.13%
19	18	15.65%	0	0.00%	19	24.36%	0	0.00%	1	4.17%	0	0.00%	12	13.04%	1	33.33%	51	16.04%
20 and Above	27	23.48%	0	0.00%	46	58.97%	1	100.00%	0	0.00%	0	0.00%	60	65.22%	1	33.33%	135	42.45%
Total	115	100.00%	3	100.00%	78	100.00%	1	100.00%	24	100.00%	2	100.00%	92	100.00%	3	100.00%	318	100.00%

Average Age	18.50	17.33	20.10	20.00	16.83	16.00	21.75	20.33	19.70
-------------	-------	-------	-------	-------	-------	-------	-------	-------	-------

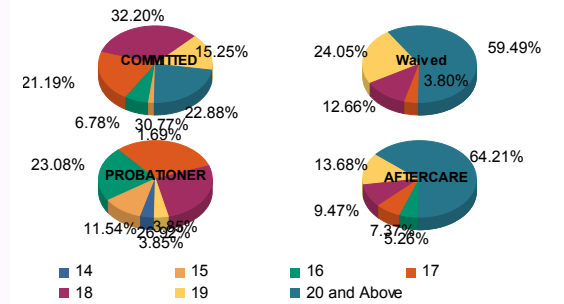
## Sentencing County

ATL	4	3.48%	0	0.00%	6	7.69%	0	0.00%	5	20.83%	0	0.00%	1	1.09%	0	0.00%	16	5.03%
BER	2	1.74%	0	0.00%	0	0.00%	0	0.00%	0	0.00%	0	0.00%	2	2.17%	0	0.00%	4	1.26%
BUR	6	5.22%	0	0.00%	2	2.56%	0	0.00%	2	8.33%	0	0.00%	9	9.78%	0	0.00%	19	5.97%
CAM	31	26.96%	1	33.33%	5	6.41%	1	100.00%	3	12.50%	0	0.00%	15	16.30%	3	100.00%	59	18.55%
CUM	4	3.48%	0	0.00%	2	2.56%	0	0.00%	1	4.17%	0	0.00%	0	0.00%	0	0.00%	7	2.20%
ESS	30	26.09%	1	33.33%	4	5.13%	0	0.00%	0	0.00%	0	0.00%	17	18.48%	0	0.00%	52	16.35%
GLO	2	1.74%	0	0.00%	0	0.00%	0	0.00%	1	4.17%	0	0.00%	1	1.09%	0	0.00%	4	1.26%
HUD	5	4.35%	1	33.33%	4	5.13%	0	0.00%	1	4.17%	0	0.00%	1	1.09%	0	0.00%	12	3.77%
HUN	1	0.87%	0	0.00%	0	0.00%	0	0.00%	0	0.00%	0	0.00%	1	1.09%	0	0.00%	2	0.63%
MER	3	2.61%	0	0.00%	4	5.13%	0	0.00%	0	0.00%	0	0.00%	3	3.26%	0	0.00%	10	3.14%
MID	8	6.96%	0	0.00%	22	28.21%	0	0.00%	1	4.17%	0	0.00%	14	15.22%	0	0.00%	45	14.15%
MON	3	2.61%	0	0.00%	4	5.13%	0	0.00%	2	8.33%	0	0.00%	2	2.17%	0	0.00%	11	3.46%
MOR	1	0.87%	0	0.00%	0	0.00%	0	0.00%	0	0.00%	0	0.00%	0	0.00%	0	0.00%	1	0.31%
OCE	1	0.87%	0	0.00%	2	2.56%	0	0.00%	2	8.33%	0	0.00%	3	3.26%	0	0.00%	8	2.52%
PAS	10	8.70%	0	0.00%	17	21.79%	0	0.00%	4	16.67%	2	100.00%	11	11.96%	0	0.00%	44	13.84%
SAL	0	0.00%	0	0.00%	3	3.85%	0	0.00%	1	4.17%	0	0.00%	0	0.00%	0	0.00%	4	1.26%
SOM	0	0.00%	0	0.00%	0	0.00%	0	0.00%	0	0.00%	0	0.00%	2	2.17%	0	0.00%	2	0.63%
UNI	4	3.48%	0	0.00%	3	3.85%	0	0.00%	1	4.17%	0	0.00%	6	6.52%	0	0.00%	14	4.40%
WAR	0	0.00%	0	0.00%	0	0.00%	0	0.00%	0	0.00%	0	0.00%	1	1.09%	0	0.00%	1	0.31%
OTHER	0	0.00%	0	0.00%	0	0.00%	0	0.00%	0	0.00%	0	0.00%	3	3.26%	0	0.00%	3	0.94%
Total	115	100.00%	3	100.00%	78	100.00%	1	100.00%	24	100.00%	2	100.00%	92	100.00%	3	100.00%	318	100.00%

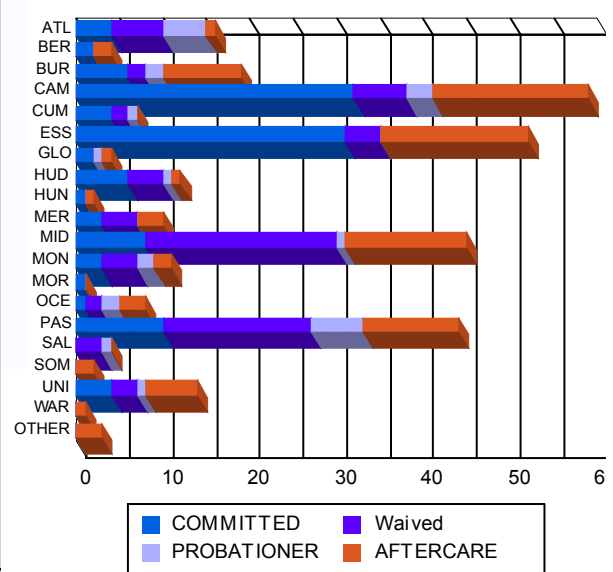
## Race/Ethnicity Grouping



## Age Grouping



## Count of Juveniles By Sentencing County





# NJ Office of the Attorney General Juvenile Justice Commission



\*Statistics are for Friday, June 2, 2023

## Juvenile Demographics and Statistics

Current Grade	COMMITTED		WAIVED		PROBATIONER		Total
	MALE	FEMALE	MALE	FEMALE	MALE	FEMALE	
7	0 (0.00%)	0 (0.00%)	0 (0.00%)	0 (0.00%)	1 (4.17%)	0 (0.00%)	1 (0.45%)
8	1 (0.87%)	0 (0.00%)	0 (0.00%)	0 (0.00%)	0 (0.00%)	0 (0.00%)	1 (0.45%)
9	12 (10.43%)	0 (0.00%)	1 (1.28%)	0 (0.00%)	6 (25.00%)	0 (0.00%)	19 (8.52%)
10	16 (13.91%)	1 (33.33%)	2 (2.56%)	0 (0.00%)	6 (25.00%)	1 (50.00%)	26 (11.66%)
11	23 (20.00%)	1 (33.33%)	4 (5.13%)	0 (0.00%)	6 (25.00%)	1 (50.00%)	35 (15.70%)
12	18 (15.65%)	0 (0.00%)	9 (11.54%)	0 (0.00%)	3 (12.50%)	0 (0.00%)	30 (13.45%)
HSG	41 (35.65%)	1 (33.33%)	58 (74.36%)	1 (100.00%)	1 (4.17%)	0 (0.00%)	102 (45.74%)
GED	3 (2.61%)	0 (0.00%)	2 (2.56%)	0 (0.00%)	0 (0.00%)	0 (0.00%)	5 (2.24%)
Others **	1 (0.87%)	0 (0.00%)	2 (2.56%)	0 (0.00%)	1 (4.17%)	0 (0.00%)	4 (1.79%)
<b>Total</b>	<b>115 (100.00%)</b>	<b>3 (100.00%)</b>	<b>78 (100.00%)</b>	<b>1 (100.00%)</b>	<b>24 (100.00%)</b>	<b>2 (100.00%)</b>	<b>223 (100.00%)</b>

\*\* Includes Aged Out Juveniles and Pending Records

## Special Education Services

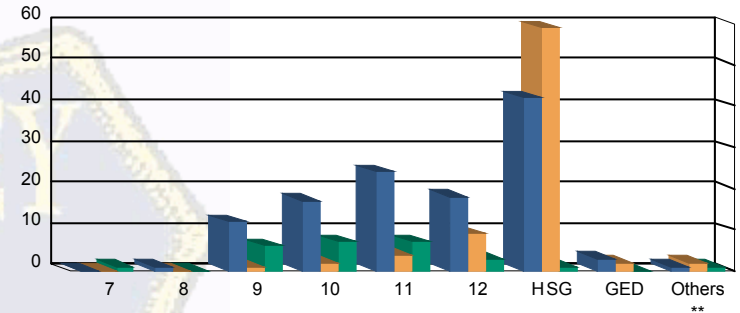
Yes	59 (51.30%)	2 (66.67%)	29 (37.18%)	1 (100.00%)	14 (58.33%)	0 (0.00%)	105 (47.09%)
No	46 (40.00%)	1 (33.33%)	34 (43.59%)	0 (0.00%)	9 (37.50%)	2 (100.00%)	92 (41.26%)
Pending	10 (8.70%)	0 (0.00%)	15 (19.23%)	0 (0.00%)	1 (4.17%)	0 (0.00%)	26 (11.66%)
<b>Total</b>	<b>115 (100.00%)</b>	<b>3 (100.00%)</b>	<b>78 (100.00%)</b>	<b>1 (100.00%)</b>	<b>24 (100.00%)</b>	<b>2 (100.00%)</b>	<b>223 (100.00%)</b>

## Offense Categories

Drug	43 (5.51%)	0 (0.00%)	11 (4.80%)	0 (0.00%)	4 (4.65%)	0 (0.00%)	58 (5.20%)
Persons	218 (27.95%)	7 (43.75%)	120 (52.40%)	2 (100.00%)	19 (22.09%)	0 (0.00%)	366 (32.83%)
Property	132 (16.92%)	2 (12.50%)	23 (10.04%)	0 (0.00%)	15 (17.44%)	1 (50.00%)	173 (15.52%)
Public Order	96 (12.31%)	2 (12.50%)	14 (6.11%)	0 (0.00%)	8 (9.30%)	0 (0.00%)	120 (10.76%)
VOP	165 (21.15%)	3 (18.75%)	24 (10.48%)	0 (0.00%)	18 (20.93%)	0 (0.00%)	210 (18.83%)
Weapons	125 (16.03%)	2 (12.50%)	36 (15.72%)	0 (0.00%)	18 (20.93%)	1 (50.00%)	182 (16.32%)
Others Offenses	1 (0.13%)	0 (0.00%)	1 (0.44%)	0 (0.00%)	4 (4.65%)	0 (0.00%)	6 (0.54%)
<b>Total *</b>	<b>780 (100.00%)</b>	<b>16 (100.00%)</b>	<b>229 (100.00%)</b>	<b>2 (100.00%)</b>	<b>86 (100.00%)</b>	<b>2 (100.00%)</b>	<b>1,115 (100.00%)</b>

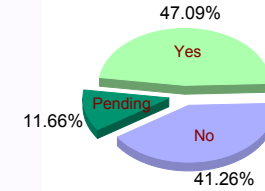
\* Juveniles may have multiple offenses

Current Grade



■ COMMITTED ■ WAIVED ■ PROBATIONER

Special Education



Offense Categories

