



# NJ Office of the Attorney General Juvenile Justice Commission



\*Statistics are for Friday, June 9, 2023

## Juvenile Demographics and Statistics

Race/ Ethnicity	COMMITTED				WAIVED				PROBATIONER				AFTERCARE				Total	
	MALE		FEMALE		MALE		FEMALE		MALE		FEMALE		MALE		FEMALE			
BLACK	95	81.20%	3	100.00%	42	54.55%	1	100.00%	14	70.00%	1	50.00%	67	74.44%	1	33.33%	224	71.57%
HISPANIC	15	12.82%	0	0.00%	24	31.17%	0	0.00%	3	15.00%	1	50.00%	15	16.67%	0	0.00%	58	18.53%
WHITE	7	5.98%	0	0.00%	11	14.29%	0	0.00%	3	15.00%	0	0.00%	6	6.67%	2	66.67%	29	9.27%
ASIAN	0	0.00%	0	0.00%	0	0.00%	0	0.00%	0	0.00%	0	0.00%	1	1.11%	0	0.00%	1	0.32%
Others	0	0.00%	0	0.00%	0	0.00%	0	0.00%	0	0.00%	0	0.00%	1	1.11%	0	0.00%	1	0.32%
Total	117	100.00%	3	100.00%	77	100.00%	1	100.00%	20	100.00%	2	100.00%	90	100.00%	3	100.00%	313	100.00%

## Age

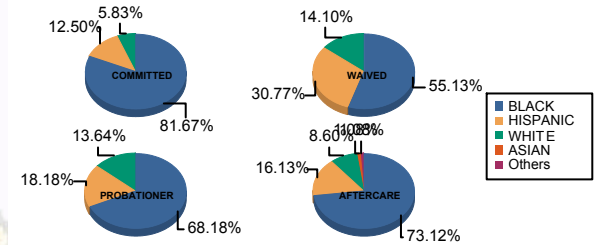
14	0	0.00%	0	0.00%	0	0.00%	0	0.00%	1	5.00%	0	0.00%	0	0.00%	0	0.00%	1	0.32%
15	2	1.71%	0	0.00%	0	0.00%	0	0.00%	3	15.00%	0	0.00%	0	0.00%	0	0.00%	5	1.60%
16	8	6.84%	1	33.33%	0	0.00%	0	0.00%	4	20.00%	2	100.00%	5	5.56%	0	0.00%	20	6.39%
17	26	22.22%	0	0.00%	3	3.90%	0	0.00%	6	30.00%	0	0.00%	7	7.78%	0	0.00%	42	13.42%
18	36	30.77%	2	66.67%	10	12.99%	0	0.00%	6	30.00%	0	0.00%	7	7.78%	1	33.33%	62	19.81%
19	18	15.38%	0	0.00%	19	24.68%	0	0.00%	0	0.00%	0	0.00%	10	11.11%	0	0.00%	47	15.02%
20 and Above	27	23.08%	0	0.00%	45	58.44%	1	100.00%	0	0.00%	0	0.00%	61	67.78%	2	66.67%	136	43.45%
Total	117	100.00%	3	100.00%	77	100.00%	1	100.00%	20	100.00%	2	100.00%	90	100.00%	3	100.00%	313	100.00%

Average Age	18.47	17.33	20.09	20.00	16.65	16.00	21.86	20.67	19.73
-------------	-------	-------	-------	-------	-------	-------	-------	-------	-------

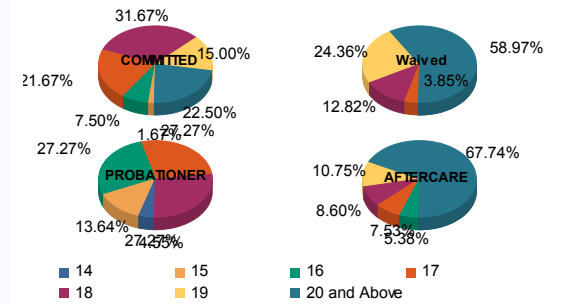
## Sentencing County

ATL	4	3.42%	0	0.00%	6	7.79%	0	0.00%	4	20.00%	0	0.00%	1	1.11%	0	0.00%	15	4.79%
BER	2	1.71%	0	0.00%	0	0.00%	0	0.00%	0	0.00%	0	0.00%	2	2.22%	0	0.00%	4	1.28%
BUR	7	5.98%	0	0.00%	2	2.60%	0	0.00%	2	10.00%	0	0.00%	9	10.00%	0	0.00%	20	6.39%
CAM	31	26.50%	1	33.33%	5	6.49%	1	100.00%	3	15.00%	0	0.00%	15	16.67%	3	100.00%	59	18.85%
CUM	4	3.42%	0	0.00%	2	2.60%	0	0.00%	0	0.00%	0	0.00%	0	0.00%	0	0.00%	6	1.92%
ESS	30	25.64%	1	33.33%	4	5.19%	0	0.00%	0	0.00%	0	0.00%	16	17.78%	0	0.00%	51	16.29%
GLO	2	1.71%	0	0.00%	0	0.00%	0	0.00%	0	0.00%	0	0.00%	1	1.11%	0	0.00%	3	0.96%
HUD	5	4.27%	1	33.33%	4	5.19%	0	0.00%	1	5.00%	0	0.00%	1	1.11%	0	0.00%	12	3.83%
HUN	1	0.85%	0	0.00%	0	0.00%	0	0.00%	0	0.00%	0	0.00%	1	1.11%	0	0.00%	2	0.64%
MER	3	2.56%	0	0.00%	3	3.90%	0	0.00%	0	0.00%	0	0.00%	3	3.33%	0	0.00%	9	2.88%
MID	9	7.69%	0	0.00%	22	28.57%	0	0.00%	1	5.00%	0	0.00%	13	14.44%	0	0.00%	45	14.38%
MON	3	2.56%	0	0.00%	4	5.19%	0	0.00%	1	5.00%	0	0.00%	2	2.22%	0	0.00%	10	3.19%
MOR	1	0.85%	0	0.00%	0	0.00%	0	0.00%	0	0.00%	0	0.00%	0	0.00%	0	0.00%	1	0.32%
OCE	1	0.85%	0	0.00%	2	2.60%	0	0.00%	2	10.00%	0	0.00%	3	3.33%	0	0.00%	8	2.56%
PAS	10	8.55%	0	0.00%	17	22.08%	0	0.00%	4	20.00%	2	100.00%	11	12.22%	0	0.00%	44	14.06%
SAL	0	0.00%	0	0.00%	3	3.90%	0	0.00%	1	5.00%	0	0.00%	0	0.00%	0	0.00%	4	1.28%
SOM	0	0.00%	0	0.00%	0	0.00%	0	0.00%	0	0.00%	0	0.00%	2	2.22%	0	0.00%	2	0.64%
UNI	4	3.42%	0	0.00%	3	3.90%	0	0.00%	1	5.00%	0	0.00%	6	6.67%	0	0.00%	14	4.47%
WAR	0	0.00%	0	0.00%	0	0.00%	0	0.00%	0	0.00%	0	0.00%	1	1.11%	0	0.00%	1	0.32%
OTHER	0	0.00%	0	0.00%	0	0.00%	0	0.00%	0	0.00%	0	0.00%	3	3.33%	0	0.00%	3	0.96%
Total	117	100.00%	3	100.00%	77	100.00%	1	100.00%	20	100.00%	2	100.00%	90	100.00%	3	100.00%	313	100.00%

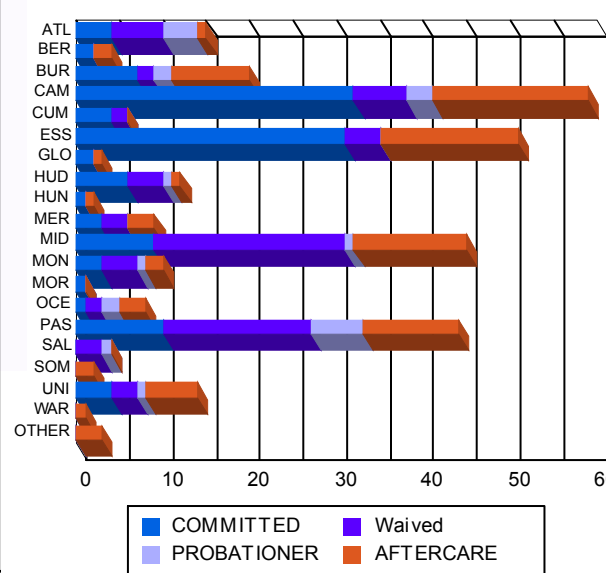
## Race/Ethnicity Grouping



## Age Grouping



## Count of Juveniles By Sentencing County





# NJ Office of the Attorney General Juvenile Justice Commission



\*Statistics are for Friday, June 9, 2023

## Juvenile Demographics and Statistics

Current Grade	COMMITTED		WAIVED		PROBATIONER		Total
	MALE	FEMALE	MALE	FEMALE	MALE	FEMALE	
7	0 (0.00%)	0 (0.00%)	0 (0.00%)	0 (0.00%)	1 (5.00%)	0 (0.00%)	1 (0.45%)
8	1 (0.85%)	0 (0.00%)	0 (0.00%)	0 (0.00%)	0 (0.00%)	0 (0.00%)	1 (0.45%)
9	12 (10.26%)	0 (0.00%)	1 (1.30%)	0 (0.00%)	7 (35.00%)	0 (0.00%)	20 (9.09%)
10	18 (15.38%)	1 (33.33%)	2 (2.60%)	0 (0.00%)	5 (25.00%)	1 (50.00%)	27 (12.27%)
11	23 (19.66%)	1 (33.33%)	3 (3.90%)	0 (0.00%)	5 (25.00%)	1 (50.00%)	33 (15.00%)
12	17 (14.53%)	0 (0.00%)	10 (12.99%)	0 (0.00%)	2 (10.00%)	0 (0.00%)	29 (13.18%)
HSG	42 (35.90%)	1 (33.33%)	57 (74.03%)	1 (100.00%)	0 (0.00%)	0 (0.00%)	101 (45.91%)
GED	3 (2.56%)	0 (0.00%)	2 (2.60%)	0 (0.00%)	0 (0.00%)	0 (0.00%)	5 (2.27%)
Others **	1 (0.85%)	0 (0.00%)	2 (2.60%)	0 (0.00%)	0 (0.00%)	0 (0.00%)	3 (1.36%)
<b>Total</b>	<b>117 (100.00%)</b>	<b>3 (100.00%)</b>	<b>77 (100.00%)</b>	<b>1 (100.00%)</b>	<b>20 (100.00%)</b>	<b>2 (100.00%)</b>	<b>220 (100.00%)</b>

\*\* Includes Aged Out Juveniles and Pending Records

## Special Education Services

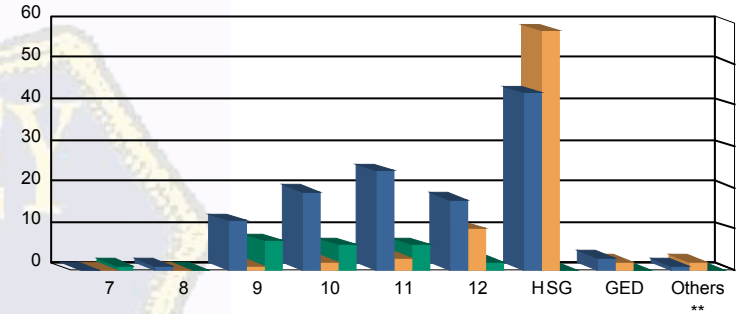
Yes	60 (51.28%)	2 (66.67%)	29 (37.66%)	1 (100.00%)	12 (60.00%)	0 (0.00%)	104 (47.27%)
No	47 (40.17%)	1 (33.33%)	33 (42.86%)	0 (0.00%)	8 (40.00%)	2 (100.00%)	91 (41.36%)
Pending	10 (8.55%)	0 (0.00%)	15 (19.48%)	0 (0.00%)	0 (0.00%)	0 (0.00%)	25 (11.36%)
<b>Total</b>	<b>117 (100.00%)</b>	<b>3 (100.00%)</b>	<b>77 (100.00%)</b>	<b>1 (100.00%)</b>	<b>20 (100.00%)</b>	<b>2 (100.00%)</b>	<b>220 (100.00%)</b>

## Offense Categories

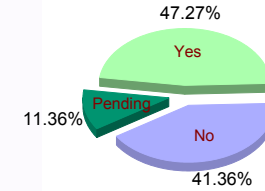
Drug	43 (5.50%)	0 (0.00%)	11 (4.78%)	0 (0.00%)	4 (5.19%)	0 (0.00%)	58 (5.22%)
Persons	218 (27.88%)	7 (43.75%)	121 (52.61%)	2 (100.00%)	16 (20.78%)	1 (25.00%)	365 (32.85%)
Property	133 (17.01%)	2 (12.50%)	23 (10.00%)	0 (0.00%)	14 (18.18%)	1 (25.00%)	173 (15.57%)
Public Order	96 (12.28%)	2 (12.50%)	14 (6.09%)	0 (0.00%)	6 (7.79%)	0 (0.00%)	118 (10.62%)
VOP	164 (20.97%)	3 (18.75%)	24 (10.43%)	0 (0.00%)	17 (22.08%)	1 (25.00%)	209 (18.81%)
Weapons	127 (16.24%)	2 (12.50%)	36 (15.65%)	0 (0.00%)	18 (23.38%)	1 (25.00%)	184 (16.56%)
Others Offenses	1 (0.13%)	0 (0.00%)	1 (0.43%)	0 (0.00%)	2 (2.60%)	0 (0.00%)	4 (0.36%)
<b>Total *</b>	<b>782 (100.00%)</b>	<b>16 (100.00%)</b>	<b>230 (100.00%)</b>	<b>2 (100.00%)</b>	<b>77 (100.00%)</b>	<b>4 (100.00%)</b>	<b>1,111 (100.00%)</b>

\* Juveniles may have multiple offenses

Current Grade



Special Education



Offense Categories

