



NJ Office of the Attorney General Juvenile Justice Commission



*Statistics are for Friday, June 16, 2023

Juvenile Demographics and Statistics

Race/ Ethnicity	COMMITTED				WAIVED				PROBATIONER				AFTERCARE				Total	
	MALE		FEMALE		MALE		FEMALE		MALE		FEMALE		MALE		FEMALE			
BLACK	96	80.67%	3	100.00%	43	55.13%	1	100.00%	16	72.73%	2	66.67%	70	76.09%	1	33.33%	232	72.27%
HISPANIC	16	13.45%	0	0.00%	24	30.77%	0	0.00%	3	13.64%	1	33.33%	15	16.30%	0	0.00%	59	18.38%
WHITE	7	5.88%	0	0.00%	11	14.10%	0	0.00%	3	13.64%	0	0.00%	5	5.43%	2	66.67%	28	8.72%
ASIAN	0	0.00%	0	0.00%	0	0.00%	0	0.00%	0	0.00%	0	0.00%	1	1.09%	0	0.00%	1	0.31%
Others	0	0.00%	0	0.00%	0	0.00%	0	0.00%	0	0.00%	0	0.00%	1	1.09%	0	0.00%	1	0.31%
Total	119	100.00%	3	100.00%	78	100.00%	1	100.00%	22	100.00%	3	100.00%	92	100.00%	3	100.00%	321	100.00%

Age

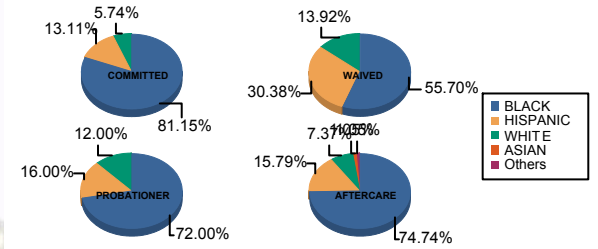
14	0	0.00%	0	0.00%	0	0.00%	0	0.00%	1	4.55%	0	0.00%	0	0.00%	0	0.00%	1	0.31%
15	2	1.68%	0	0.00%	0	0.00%	0	0.00%	3	13.64%	0	0.00%	0	0.00%	0	0.00%	5	1.56%
16	10	8.40%	1	33.33%	0	0.00%	0	0.00%	4	18.18%	2	66.67%	5	5.43%	0	0.00%	22	6.85%
17	26	21.85%	0	0.00%	4	5.13%	0	0.00%	8	36.36%	1	33.33%	7	7.61%	0	0.00%	46	14.33%
18	37	31.09%	2	66.67%	10	12.82%	0	0.00%	6	27.27%	0	0.00%	8	8.70%	1	33.33%	64	19.94%
19	18	15.13%	0	0.00%	18	23.08%	0	0.00%	0	0.00%	0	0.00%	10	10.87%	0	0.00%	46	14.33%
20 and Above	26	21.85%	0	0.00%	46	58.97%	1	100.00%	0	0.00%	0	0.00%	62	67.39%	2	66.67%	137	42.68%
Total	119	100.00%	3	100.00%	78	100.00%	1	100.00%	22	100.00%	3	100.00%	92	100.00%	3	100.00%	321	100.00%

Average Age	18.44	17.33	20.08	20.00	16.68	16.33	21.77	20.67	19.67
-------------	-------	-------	-------	-------	-------	-------	-------	-------	-------

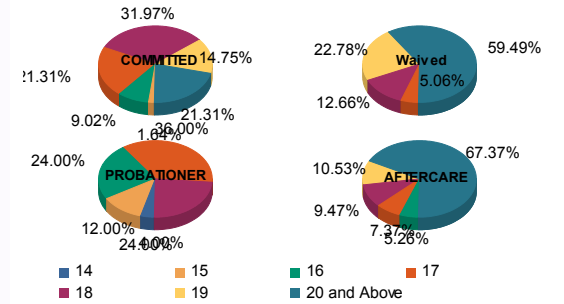
Sentencing County

ATL	4	3.36%	0	0.00%	6	7.69%	0	0.00%	4	18.18%	0	0.00%	1	1.09%	0	0.00%	15	4.67%
BER	2	1.68%	0	0.00%	0	0.00%	0	0.00%	1	4.55%	0	0.00%	2	2.17%	0	0.00%	5	1.56%
BUR	7	5.88%	0	0.00%	2	2.56%	0	0.00%	2	9.09%	0	0.00%	9	9.78%	0	0.00%	20	6.23%
CAM	31	26.05%	1	33.33%	5	6.41%	1	100.00%	3	13.64%	0	0.00%	15	16.30%	3	100.00%	59	18.38%
CUM	4	3.36%	0	0.00%	2	2.56%	0	0.00%	0	0.00%	0	0.00%	0	0.00%	0	0.00%	6	1.87%
ESS	32	26.89%	1	33.33%	4	5.13%	0	0.00%	0	0.00%	0	0.00%	16	17.39%	0	0.00%	53	16.51%
GLO	2	1.68%	0	0.00%	0	0.00%	0	0.00%	0	0.00%	0	0.00%	1	1.09%	0	0.00%	3	0.93%
HUD	6	5.04%	1	33.33%	4	5.13%	0	0.00%	1	4.55%	0	0.00%	1	1.09%	0	0.00%	13	4.05%
HUN	1	0.84%	0	0.00%	0	0.00%	0	0.00%	0	0.00%	0	0.00%	1	1.09%	0	0.00%	2	0.62%
MER	3	2.52%	0	0.00%	3	3.85%	0	0.00%	0	0.00%	0	0.00%	3	3.26%	0	0.00%	9	2.80%
MID	9	7.56%	0	0.00%	22	28.21%	0	0.00%	1	4.55%	0	0.00%	13	14.13%	0	0.00%	45	14.02%
MON	3	2.52%	0	0.00%	4	5.13%	0	0.00%	1	4.55%	1	33.33%	2	2.17%	0	0.00%	11	3.43%
MOR	1	0.84%	0	0.00%	0	0.00%	0	0.00%	0	0.00%	0	0.00%	0	0.00%	0	0.00%	1	0.31%
OCE	1	0.84%	0	0.00%	2	2.56%	0	0.00%	2	9.09%	0	0.00%	3	3.26%	0	0.00%	8	2.49%
PAS	9	7.56%	0	0.00%	17	21.79%	0	0.00%	4	18.18%	2	66.67%	12	13.04%	0	0.00%	44	13.71%
SAL	0	0.00%	0	0.00%	3	3.85%	0	0.00%	1	4.55%	0	0.00%	0	0.00%	0	0.00%	4	1.25%
SOM	0	0.00%	0	0.00%	0	0.00%	0	0.00%	0	0.00%	0	0.00%	1	1.09%	0	0.00%	1	0.31%
UNI	4	3.36%	0	0.00%	4	5.13%	0	0.00%	2	9.09%	0	0.00%	8	8.70%	0	0.00%	18	5.61%
WAR	0	0.00%	0	0.00%	0	0.00%	0	0.00%	0	0.00%	0	0.00%	1	1.09%	0	0.00%	1	0.31%
OTHER	0	0.00%	0	0.00%	0	0.00%	0	0.00%	0	0.00%	0	0.00%	3	3.26%	0	0.00%	3	0.93%
Total	119	100.00%	3	100.00%	78	100.00%	1	100.00%	22	100.00%	3	100.00%	92	100.00%	3	100.00%	321	100.00%

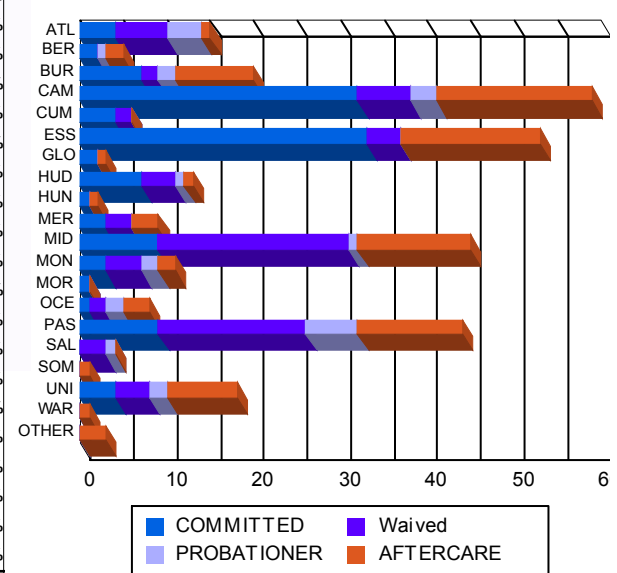
Race/Ethnicity Grouping



Age Grouping



Count of Juveniles By Sentencing County





NJ Office of the Attorney General Juvenile Justice Commission



*Statistics are for Friday, June 16, 2023

Juvenile Demographics and Statistics

Current Grade	COMMITTED		WAIVED		PROBATIONER		Total
	MALE	FEMALE	MALE	FEMALE	MALE	FEMALE	
7	0 (0.00%)	0 (0.00%)	0 (0.00%)	0 (0.00%)	1 (4.55%)	0 (0.00%)	1 (0.44%)
8	1 (0.84%)	0 (0.00%)	0 (0.00%)	0 (0.00%)	0 (0.00%)	0 (0.00%)	1 (0.44%)
9	12 (10.08%)	0 (0.00%)	1 (1.28%)	0 (0.00%)	6 (27.27%)	0 (0.00%)	19 (8.41%)
10	15 (12.61%)	1 (33.33%)	1 (1.28%)	0 (0.00%)	6 (27.27%)	1 (33.33%)	24 (10.62%)
11	22 (18.49%)	1 (33.33%)	4 (5.13%)	0 (0.00%)	6 (27.27%)	2 (66.67%)	35 (15.49%)
12	20 (16.81%)	0 (0.00%)	10 (12.82%)	0 (0.00%)	2 (9.09%)	0 (0.00%)	32 (14.16%)
HSG	41 (34.45%)	1 (33.33%)	57 (73.08%)	1 (100.00%)	0 (0.00%)	0 (0.00%)	100 (44.25%)
GED	3 (2.52%)	0 (0.00%)	2 (2.56%)	0 (0.00%)	0 (0.00%)	0 (0.00%)	5 (2.21%)
Others **	5 (4.20%)	0 (0.00%)	3 (3.85%)	0 (0.00%)	1 (4.55%)	0 (0.00%)	9 (3.98%)
Total	119 (100.00%)	3 (100.00%)	78 (100.00%)	1 (100.00%)	22 (100.00%)	3 (100.00%)	226 (100.00%)

** Includes Aged Out Juveniles and Pending Records

Special Education Services

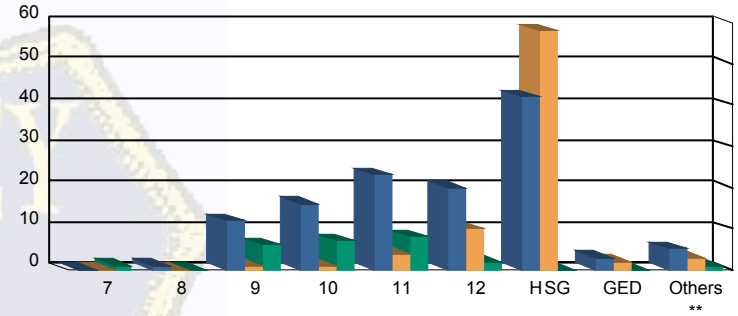
Yes	58 (48.74%)	2 (66.67%)	29 (37.18%)	1 (100.00%)	13 (59.09%)	1 (33.33%)	104 (46.02%)
No	47 (39.50%)	1 (33.33%)	33 (42.31%)	0 (0.00%)	8 (36.36%)	2 (66.67%)	91 (40.27%)
Pending	14 (11.76%)	0 (0.00%)	16 (20.51%)	0 (0.00%)	1 (4.55%)	0 (0.00%)	31 (13.72%)
Total	119 (100.00%)	3 (100.00%)	78 (100.00%)	1 (100.00%)	22 (100.00%)	3 (100.00%)	226 (100.00%)

Offense Categories

Drug	43 (5.40%)	0 (0.00%)	11 (4.78%)	0 (0.00%)	4 (5.19%)	0 (0.00%)	58 (5.16%)
Persons	221 (27.76%)	7 (43.75%)	121 (52.61%)	2 (100.00%)	17 (22.08%)	1 (25.00%)	369 (32.80%)
Property	138 (17.34%)	2 (12.50%)	23 (10.00%)	0 (0.00%)	13 (16.88%)	1 (25.00%)	177 (15.73%)
Public Order	96 (12.06%)	2 (12.50%)	14 (6.09%)	0 (0.00%)	6 (7.79%)	0 (0.00%)	118 (10.49%)
VOP	167 (20.98%)	3 (18.75%)	24 (10.43%)	0 (0.00%)	17 (22.08%)	1 (25.00%)	212 (18.84%)
Weapons	130 (16.33%)	2 (12.50%)	36 (15.65%)	0 (0.00%)	18 (23.38%)	1 (25.00%)	187 (16.62%)
Others Offenses	1 (0.13%)	0 (0.00%)	1 (0.43%)	0 (0.00%)	2 (2.60%)	0 (0.00%)	4 (0.36%)
Total *	796 (100.00%)	16 (100.00%)	230 (100.00%)	2 (100.00%)	77 (100.00%)	4 (100.00%)	1,125 (100.00%)

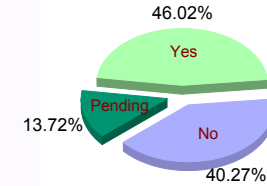
* Juveniles may have multiple offenses

Current Grade



■ COMMITTED ■ WAIVED ■ PROBATIONER

Special Education



Offense Categories

