



NJ Office of the Attorney General Juvenile Justice Commission



*Statistics are for Friday, June 30, 2023

Juvenile Demographics and Statistics

Race/ Ethnicity	COMMITTED				WAIVED				PROBATIONER				AFTERCARE				Total	
	MALE		FEMALE		MALE		FEMALE		MALE		FEMALE		MALE		FEMALE			
BLACK	94	80.34%	3	75.00%	44	56.41%	2	100.00%	17	80.95%	2	66.67%	71	74.74%	1	33.33%	234	72.45%
HISPANIC	17	14.53%	0	0.00%	24	30.77%	0	0.00%	2	9.52%	1	33.33%	16	16.84%	0	0.00%	60	18.58%
WHITE	6	5.13%	1	25.00%	10	12.82%	0	0.00%	2	9.52%	0	0.00%	6	6.32%	2	66.67%	27	8.36%
ASIAN	0	0.00%	0	0.00%	0	0.00%	0	0.00%	0	0.00%	0	0.00%	1	1.05%	0	0.00%	1	0.31%
Others	0	0.00%	0	0.00%	0	0.00%	0	0.00%	0	0.00%	0	0.00%	1	1.05%	0	0.00%	1	0.31%
Total	117	100.00%	4	100.00%	78	100.00%	2	100.00%	21	100.00%	3	100.00%	95	100.00%	3	100.00%	323	100.00%

Age

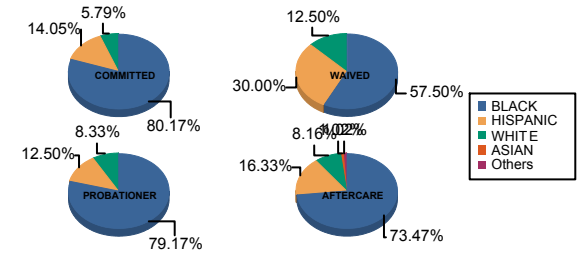
14	0	0.00%	0	0.00%	0	0.00%	0	0.00%	1	4.76%	0	0.00%	0	0.00%	0	0.00%	1	0.31%
15	2	1.71%	0	0.00%	0	0.00%	0	0.00%	2	9.52%	0	0.00%	0	0.00%	0	0.00%	4	1.24%
16	10	8.55%	2	50.00%	0	0.00%	0	0.00%	4	19.05%	2	66.67%	5	5.26%	0	0.00%	23	7.12%
17	24	20.51%	0	0.00%	3	3.85%	1	50.00%	8	38.10%	1	33.33%	6	6.32%	0	0.00%	43	13.31%
18	35	29.91%	2	50.00%	11	14.10%	0	0.00%	6	28.57%	0	0.00%	11	11.58%	1	33.33%	66	20.43%
19	20	17.09%	0	0.00%	18	23.08%	0	0.00%	0	0.00%	0	0.00%	8	8.42%	0	0.00%	46	14.24%
20 and Above	26	22.22%	0	0.00%	46	58.97%	1	50.00%	0	0.00%	0	0.00%	65	68.42%	2	66.67%	140	43.34%
Total	117	100.00%	4	100.00%	78	100.00%	2	100.00%	21	100.00%	3	100.00%	95	100.00%	3	100.00%	323	100.00%

Average Age	18.49	17.00	20.09	18.50	16.76	16.33	21.76	20.67	19.71
-------------	-------	-------	-------	-------	-------	-------	-------	-------	-------

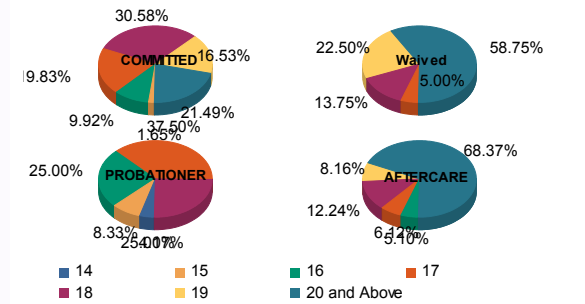
Sentencing County

ATL	4	3.42%	0	0.00%	6	7.69%	0	0.00%	3	14.29%	0	0.00%	1	1.05%	0	0.00%	14	4.33%
BER	3	2.56%	0	0.00%	0	0.00%	0	0.00%	1	4.76%	0	0.00%	2	2.11%	0	0.00%	6	1.86%
BUR	6	5.13%	0	0.00%	2	2.56%	0	0.00%	3	14.29%	0	0.00%	10	10.53%	0	0.00%	21	6.50%
CAM	30	25.64%	1	25.00%	4	5.13%	1	50.00%	3	14.29%	0	0.00%	16	16.84%	3	100.00%	58	17.96%
CUM	4	3.42%	0	0.00%	2	2.56%	0	0.00%	0	0.00%	0	0.00%	0	0.00%	0	0.00%	6	1.86%
ESS	31	26.50%	1	25.00%	5	6.41%	0	0.00%	0	0.00%	0	0.00%	17	17.89%	0	0.00%	54	16.72%
GLO	2	1.71%	0	0.00%	0	0.00%	0	0.00%	0	0.00%	0	0.00%	1	1.05%	0	0.00%	3	0.93%
HUD	6	5.13%	1	25.00%	4	5.13%	0	0.00%	1	4.76%	0	0.00%	1	1.05%	0	0.00%	13	4.02%
HUN	0	0.00%	0	0.00%	0	0.00%	0	0.00%	0	0.00%	0	0.00%	2	2.11%	0	0.00%	2	0.62%
MER	3	2.56%	0	0.00%	3	3.85%	0	0.00%	0	0.00%	0	0.00%	3	3.16%	0	0.00%	9	2.79%
MID	10	8.55%	0	0.00%	22	28.21%	1	50.00%	0	0.00%	0	0.00%	14	14.74%	0	0.00%	47	14.55%
MON	3	2.56%	0	0.00%	4	5.13%	0	0.00%	1	4.76%	1	33.33%	2	2.11%	0	0.00%	11	3.41%
MOR	1	0.85%	1	25.00%	0	0.00%	0	0.00%	0	0.00%	0	0.00%	0	0.00%	0	0.00%	2	0.62%
OCE	1	0.85%	0	0.00%	2	2.56%	0	0.00%	2	9.52%	0	0.00%	3	3.16%	0	0.00%	8	2.48%
PAS	9	7.69%	0	0.00%	17	21.79%	0	0.00%	3	14.29%	2	66.67%	11	11.58%	0	0.00%	42	13.00%
SAL	0	0.00%	0	0.00%	3	3.85%	0	0.00%	1	4.76%	0	0.00%	0	0.00%	0	0.00%	4	1.24%
SOM	0	0.00%	0	0.00%	0	0.00%	0	0.00%	0	0.00%	0	0.00%	1	1.05%	0	0.00%	1	0.31%
UNI	4	3.42%	0	0.00%	4	5.13%	0	0.00%	2	9.52%	0	0.00%	7	7.37%	0	0.00%	17	5.26%
WAR	0	0.00%	0	0.00%	0	0.00%	0	0.00%	1	4.76%	0	0.00%	1	1.05%	0	0.00%	2	0.62%
OTHER	0	0.00%	0	0.00%	0	0.00%	0	0.00%	0	0.00%	0	0.00%	3	3.16%	0	0.00%	3	0.93%
Total	117	100.00%	4	100.00%	78	100.00%	2	100.00%	21	100.00%	3	100.00%	95	100.00%	3	100.00%	323	100.00%

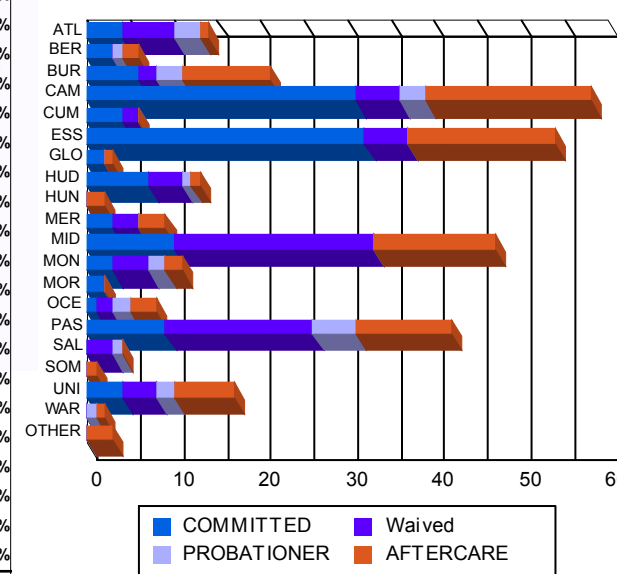
Race/Ethnicity Grouping



Age Grouping



Count of Juveniles By Sentencing County





NJ Office of the Attorney General Juvenile Justice Commission



*Statistics are for Friday, June 30, 2023

Juvenile Demographics and Statistics

Current Grade	COMMITTED		WAIVED		PROBATIONER		Total
	MALE	FEMALE	MALE	FEMALE	MALE	FEMALE	
7	0 (0.00%)	0 (0.00%)	0 (0.00%)	0 (0.00%)	1 (4.76%)	0 (0.00%)	1 (0.44%)
8	1 (0.85%)	0 (0.00%)	0 (0.00%)	0 (0.00%)	0 (0.00%)	0 (0.00%)	1 (0.44%)
9	10 (8.55%)	1 (25.00%)	1 (1.28%)	0 (0.00%)	5 (23.81%)	0 (0.00%)	17 (7.56%)
10	17 (14.53%)	1 (25.00%)	2 (2.56%)	1 (50.00%)	4 (19.05%)	1 (33.33%)	26 (11.56%)
11	25 (21.37%)	1 (25.00%)	4 (5.13%)	0 (0.00%)	6 (28.57%)	2 (66.67%)	38 (16.89%)
12	20 (17.09%)	0 (0.00%)	5 (6.41%)	0 (0.00%)	2 (9.52%)	0 (0.00%)	27 (12.00%)
HSG	40 (34.19%)	1 (25.00%)	62 (79.49%)	1 (50.00%)	1 (4.76%)	0 (0.00%)	105 (46.67%)
GED	3 (2.56%)	0 (0.00%)	2 (2.56%)	0 (0.00%)	0 (0.00%)	0 (0.00%)	5 (2.22%)
Others **	1 (0.85%)	0 (0.00%)	2 (2.56%)	0 (0.00%)	2 (9.52%)	0 (0.00%)	5 (2.22%)
Total	117 (100.00%)	4 (100.00%)	78 (100.00%)	2 (100.00%)	21 (100.00%)	3 (100.00%)	225 (100.00%)

** Includes Aged Out Juveniles and Pending Records

Special Education Services

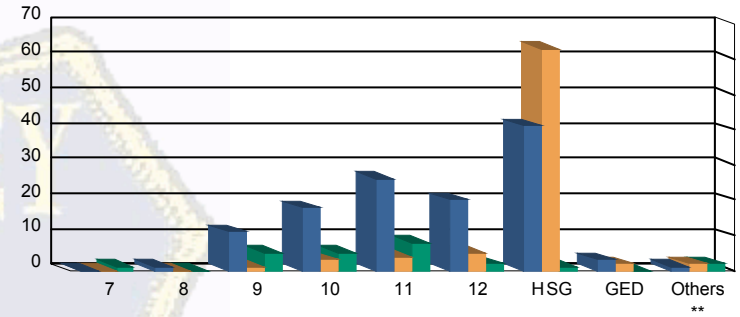
Yes	61 (52.14%)	3 (75.00%)	29 (37.18%)	1 (50.00%)	12 (57.14%)	1 (33.33%)	107 (47.56%)
No	47 (40.17%)	1 (25.00%)	33 (42.31%)	1 (50.00%)	7 (33.33%)	2 (66.67%)	91 (40.44%)
Pending	9 (7.69%)	0 (0.00%)	16 (20.51%)	0 (0.00%)	2 (9.52%)	0 (0.00%)	27 (12.00%)
Total	117 (100.00%)	4 (100.00%)	78 (100.00%)	2 (100.00%)	21 (100.00%)	3 (100.00%)	225 (100.00%)

Offense Categories

Drug	46 (5.56%)	0 (0.00%)	11 (4.70%)	0 (0.00%)	3 (4.11%)	0 (0.00%)	60 (5.17%)
Persons	227 (27.45%)	7 (36.84%)	122 (52.14%)	3 (100.00%)	17 (23.29%)	1 (25.00%)	377 (32.50%)
Property	144 (17.41%)	3 (15.79%)	24 (10.26%)	0 (0.00%)	14 (19.18%)	1 (25.00%)	186 (16.03%)
Public Order	100 (12.09%)	2 (10.53%)	14 (5.98%)	0 (0.00%)	5 (6.85%)	0 (0.00%)	121 (10.43%)
VOP	173 (20.92%)	4 (21.05%)	24 (10.26%)	0 (0.00%)	16 (21.92%)	1 (25.00%)	218 (18.79%)
Weapons	136 (16.44%)	3 (15.79%)	38 (16.24%)	0 (0.00%)	16 (21.92%)	1 (25.00%)	194 (16.72%)
Others Offenses	1 (0.12%)	0 (0.00%)	1 (0.43%)	0 (0.00%)	2 (2.74%)	0 (0.00%)	4 (0.34%)
Total *	827 (100.00%)	19 (100.00%)	234 (100.00%)	3 (100.00%)	73 (100.00%)	4 (100.00%)	1,160 (100.00%)

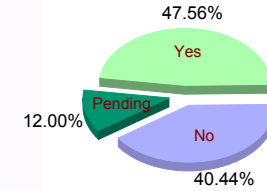
* Juveniles may have multiple offenses

Current Grade



■ COMMITTED ■ WAIVED ■ PROBATIONER

Special Education



Offense Categories

