



NJ Office of the Attorney General Juvenile Justice Commission



*Statistics are for Friday, July 7, 2023

Juvenile Demographics and Statistics

Race/ Ethnicity	COMMITTED				WAIVED				PROBATIONER				AFTERCARE				Total	
	MALE		FEMALE		MALE		FEMALE		MALE		FEMALE		MALE		FEMALE			
BLACK	96	80.00%	3	75.00%	45	56.96%	2	100.00%	15	78.95%	2	66.67%	70	75.27%	1	33.33%	234	72.45%
HISPANIC	17	14.17%	0	0.00%	24	30.38%	0	0.00%	2	10.53%	1	33.33%	15	16.13%	0	0.00%	59	18.27%
WHITE	7	5.83%	1	25.00%	10	12.66%	0	0.00%	2	10.53%	0	0.00%	6	6.45%	2	66.67%	28	8.67%
ASIAN	0	0.00%	0	0.00%	0	0.00%	0	0.00%	0	0.00%	0	0.00%	1	1.08%	0	0.00%	1	0.31%
Others	0	0.00%	0	0.00%	0	0.00%	0	0.00%	0	0.00%	0	0.00%	1	1.08%	0	0.00%	1	0.31%
Total	120	100.00%	4	100.00%	79	100.00%	2	100.00%	19	100.00%	3	100.00%	93	100.00%	3	100.00%	323	100.00%

Age

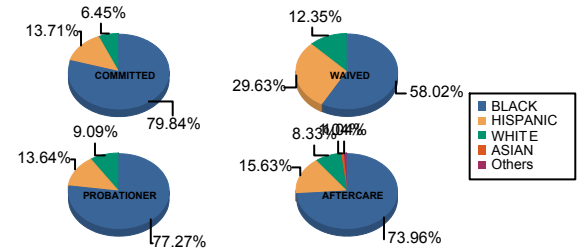
14	0	0.00%	0	0.00%	0	0.00%	0	0.00%	1	5.26%	0	0.00%	0	0.00%	0	0.00%	1	0.31%
15	3	2.50%	0	0.00%	0	0.00%	0	0.00%	2	10.53%	0	0.00%	0	0.00%	0	0.00%	5	1.55%
16	9	7.50%	2	50.00%	1	1.27%	0	0.00%	4	21.05%	2	66.67%	5	5.38%	0	0.00%	23	7.12%
17	23	19.17%	0	0.00%	3	3.80%	1	50.00%	7	36.84%	1	33.33%	6	6.45%	0	0.00%	41	12.69%
18	37	30.83%	2	50.00%	11	13.92%	0	0.00%	5	26.32%	0	0.00%	11	11.83%	1	33.33%	67	20.74%
19	22	18.33%	0	0.00%	19	24.05%	0	0.00%	0	0.00%	0	0.00%	8	8.60%	0	0.00%	49	15.17%
20 and Above	26	21.67%	0	0.00%	45	56.96%	1	50.00%	0	0.00%	0	0.00%	63	67.74%	2	66.67%	137	42.41%
Total	120	100.00%	4	100.00%	79	100.00%	2	100.00%	19	100.00%	3	100.00%	93	100.00%	3	100.00%	323	100.00%

Average Age	18.50	17.00	20.00	18.50	16.68	16.33	21.73	20.67	19.67
-------------	-------	-------	-------	-------	-------	-------	-------	-------	-------

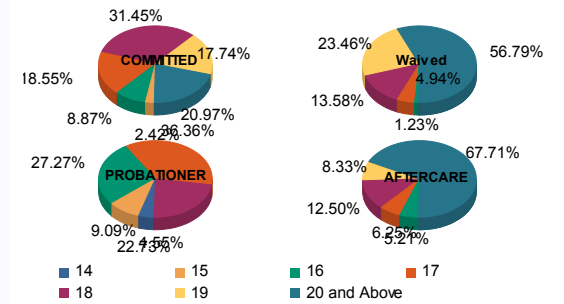
Sentencing County

ATL	4	3.33%	0	0.00%	6	7.59%	0	0.00%	2	10.53%	0	0.00%	1	1.08%	0	0.00%	13	4.02%
BER	3	2.50%	0	0.00%	0	0.00%	0	0.00%	1	5.26%	0	0.00%	2	2.15%	0	0.00%	6	1.86%
BUR	6	5.00%	0	0.00%	2	2.53%	0	0.00%	2	10.53%	0	0.00%	10	10.75%	0	0.00%	20	6.19%
CAM	31	25.83%	1	25.00%	4	5.06%	1	50.00%	3	15.79%	0	0.00%	16	17.20%	3	100.00%	59	18.27%
CUM	4	3.33%	0	0.00%	2	2.53%	0	0.00%	0	0.00%	0	0.00%	0	0.00%	0	0.00%	6	1.86%
ESS	31	25.83%	1	25.00%	6	7.59%	0	0.00%	0	0.00%	0	0.00%	16	17.20%	0	0.00%	54	16.72%
GLO	3	2.50%	0	0.00%	0	0.00%	0	0.00%	0	0.00%	0	0.00%	1	1.08%	0	0.00%	4	1.24%
HUD	6	5.00%	1	25.00%	4	5.06%	0	0.00%	1	5.26%	0	0.00%	1	1.08%	0	0.00%	13	4.02%
HUN	0	0.00%	0	0.00%	0	0.00%	0	0.00%	0	0.00%	0	0.00%	2	2.15%	0	0.00%	2	0.62%
MER	3	2.50%	0	0.00%	3	3.80%	0	0.00%	0	0.00%	0	0.00%	3	3.23%	0	0.00%	9	2.79%
MID	10	8.33%	0	0.00%	22	27.85%	1	50.00%	0	0.00%	0	0.00%	14	15.05%	0	0.00%	47	14.55%
MON	4	3.33%	0	0.00%	4	5.06%	0	0.00%	1	5.26%	1	33.33%	2	2.15%	0	0.00%	12	3.72%
MOR	1	0.83%	1	25.00%	0	0.00%	0	0.00%	0	0.00%	0	0.00%	0	0.00%	0	0.00%	2	0.62%
OCE	1	0.83%	0	0.00%	2	2.53%	0	0.00%	2	10.53%	0	0.00%	3	3.23%	0	0.00%	8	2.48%
PAS	8	6.67%	0	0.00%	17	21.52%	0	0.00%	3	15.79%	2	66.67%	10	10.75%	0	0.00%	40	12.38%
SAL	0	0.00%	0	0.00%	3	3.80%	0	0.00%	1	5.26%	0	0.00%	0	0.00%	0	0.00%	4	1.24%
SOM	0	0.00%	0	0.00%	0	0.00%	0	0.00%	0	0.00%	0	0.00%	1	1.08%	0	0.00%	1	0.31%
UNI	5	4.17%	0	0.00%	4	5.06%	0	0.00%	2	10.53%	0	0.00%	7	7.53%	0	0.00%	18	5.57%
WAR	0	0.00%	0	0.00%	0	0.00%	0	0.00%	1	5.26%	0	0.00%	1	1.08%	0	0.00%	2	0.62%
OTHER	0	0.00%	0	0.00%	0	0.00%	0	0.00%	0	0.00%	0	0.00%	3	3.23%	0	0.00%	3	0.93%
Total	120	100.00%	4	100.00%	79	100.00%	2	100.00%	19	100.00%	3	100.00%	93	100.00%	3	100.00%	323	100.00%

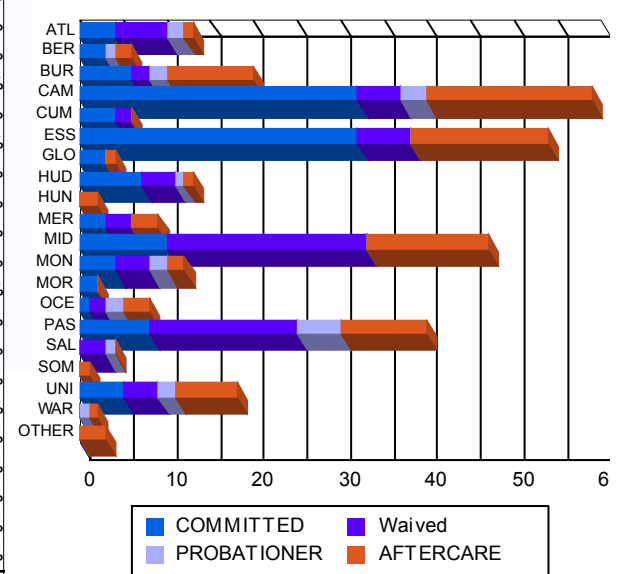
Race/Ethnicity Grouping



Age Grouping



Count of Juveniles By Sentencing County





NJ Office of the Attorney General Juvenile Justice Commission



*Statistics are for Friday, July 7, 2023

Juvenile Demographics and Statistics

Current Grade	COMMITTED		WAIVED		PROBATIONER		Total
	MALE	FEMALE	MALE	FEMALE	MALE	FEMALE	
7	0 (0.00%)	0 (0.00%)	0 (0.00%)	0 (0.00%)	1 (5.26%)	0 (0.00%)	1 (0.44%)
8	1 (0.83%)	0 (0.00%)	0 (0.00%)	0 (0.00%)	0 (0.00%)	0 (0.00%)	1 (0.44%)
9	10 (8.33%)	1 (25.00%)	1 (1.27%)	0 (0.00%)	5 (26.32%)	0 (0.00%)	17 (7.49%)
10	18 (15.00%)	1 (25.00%)	2 (2.53%)	1 (50.00%)	4 (21.05%)	1 (33.33%)	27 (11.89%)
11	22 (18.33%)	1 (25.00%)	4 (5.06%)	0 (0.00%)	6 (31.58%)	2 (66.67%)	35 (15.42%)
12	22 (18.33%)	0 (0.00%)	4 (5.06%)	0 (0.00%)	2 (10.53%)	0 (0.00%)	28 (12.33%)
HSG	39 (32.50%)	1 (25.00%)	63 (79.75%)	1 (50.00%)	1 (5.26%)	0 (0.00%)	105 (46.26%)
GED	3 (2.50%)	0 (0.00%)	2 (2.53%)	0 (0.00%)	0 (0.00%)	0 (0.00%)	5 (2.20%)
Others **	5 (4.17%)	0 (0.00%)	3 (3.80%)	0 (0.00%)	0 (0.00%)	0 (0.00%)	8 (3.52%)
Total	120 (100.00%)	4 (100.00%)	79 (100.00%)	2 (100.00%)	19 (100.00%)	3 (100.00%)	227 (100.00%)

** Includes Aged Out Juveniles and Pending Records

Special Education Services

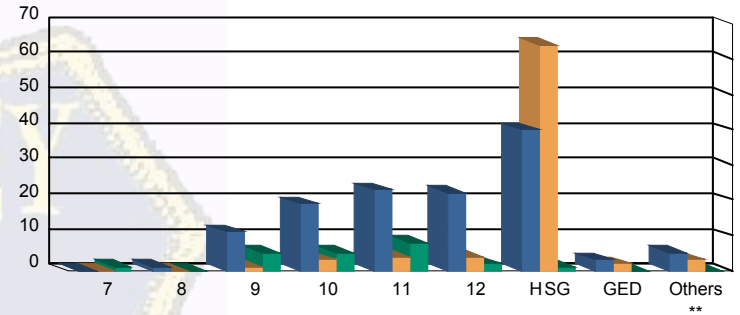
Yes	60 (50.00%)	3 (75.00%)	28 (35.44%)	1 (50.00%)	10 (52.63%)	1 (33.33%)	103 (45.37%)
No	47 (39.17%)	1 (25.00%)	33 (41.77%)	1 (50.00%)	9 (47.37%)	2 (66.67%)	93 (40.97%)
Pending	13 (10.83%)	0 (0.00%)	18 (22.78%)	0 (0.00%)	0 (0.00%)	0 (0.00%)	31 (13.66%)
Total	120 (100.00%)	4 (100.00%)	79 (100.00%)	2 (100.00%)	19 (100.00%)	3 (100.00%)	227 (100.00%)

Offense Categories

Drug	46 (5.64%)	0 (0.00%)	10 (4.27%)	0 (0.00%)	3 (4.55%)	0 (0.00%)	59 (5.17%)
Persons	226 (27.70%)	7 (36.84%)	121 (51.71%)	3 (100.00%)	16 (24.24%)	1 (25.00%)	374 (32.75%)
Property	141 (17.28%)	3 (15.79%)	25 (10.68%)	0 (0.00%)	12 (18.18%)	1 (25.00%)	182 (15.94%)
Public Order	99 (12.13%)	2 (10.53%)	14 (5.98%)	0 (0.00%)	5 (7.58%)	0 (0.00%)	120 (10.51%)
VOP	170 (20.83%)	4 (21.05%)	25 (10.68%)	0 (0.00%)	13 (19.70%)	1 (25.00%)	213 (18.65%)
Weapons	133 (16.30%)	3 (15.79%)	38 (16.24%)	0 (0.00%)	16 (24.24%)	1 (25.00%)	191 (16.73%)
Others Offenses	1 (0.12%)	0 (0.00%)	1 (0.43%)	0 (0.00%)	1 (1.52%)	0 (0.00%)	3 (0.26%)
Total *	816 (100.00%)	19 (100.00%)	234 (100.00%)	3 (100.00%)	66 (100.00%)	4 (100.00%)	1,142 (100.00%)

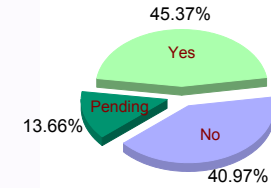
* Juveniles may have multiple offenses

Current Grade



■ COMMITTED ■ WAIVED ■ PROBATIONER

Special Education



Offense Categories

