



NJ Office of the Attorney General Juvenile Justice Commission



*Statistics are for Friday, July 28, 2023

Juvenile Demographics and Statistics

Race/ Ethnicity	COMMITTED				WAIVED				PROBATIONER				AFTERCARE				Total	
	MALE		FEMALE		MALE		FEMALE		MALE		FEMALE		MALE		FEMALE			
BLACK	96	80.67%	3	75.00%	45	56.96%	2	100.00%	16	80.00%	2	66.67%	75	75.76%	1	33.33%	240	72.95%
HISPANIC	16	13.45%	0	0.00%	24	30.38%	0	0.00%	2	10.00%	1	33.33%	16	16.16%	0	0.00%	59	17.93%
WHITE	7	5.88%	1	25.00%	10	12.66%	0	0.00%	2	10.00%	0	0.00%	6	6.06%	2	66.67%	28	8.51%
ASIAN	0	0.00%	0	0.00%	0	0.00%	0	0.00%	0	0.00%	0	0.00%	1	1.01%	0	0.00%	1	0.30%
Others	0	0.00%	0	0.00%	0	0.00%	0	0.00%	0	0.00%	0	0.00%	1	1.01%	0	0.00%	1	0.30%
Total	119	100.00%	4	100.00%	79	100.00%	2	100.00%	20	100.00%	3	100.00%	99	100.00%	3	100.00%	329	100.00%

Age

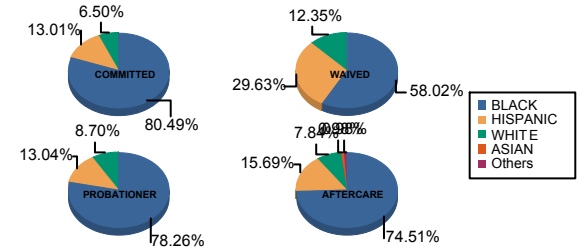
14	1	0.84%	0	0.00%	0	0.00%	0	0.00%	1	5.00%	0	0.00%	0	0.00%	0	0.00%	2	0.61%
15	3	2.52%	0	0.00%	0	0.00%	0	0.00%	1	5.00%	0	0.00%	0	0.00%	0	0.00%	4	1.22%
16	10	8.40%	1	25.00%	1	1.27%	0	0.00%	7	35.00%	2	66.67%	4	4.04%	0	0.00%	25	7.60%
17	23	19.33%	1	25.00%	4	5.06%	1	50.00%	7	35.00%	1	33.33%	6	6.06%	0	0.00%	43	13.07%
18	33	27.73%	2	50.00%	11	13.92%	0	0.00%	4	20.00%	0	0.00%	13	13.13%	0	0.00%	63	19.15%
19	23	19.33%	0	0.00%	18	22.78%	0	0.00%	0	0.00%	0	0.00%	12	12.12%	1	33.33%	54	16.41%
20 and Above	26	21.85%	0	0.00%	45	56.96%	1	50.00%	0	0.00%	0	0.00%	64	64.65%	2	66.67%	138	41.95%
Total	119	100.00%	4	100.00%	79	100.00%	2	100.00%	20	100.00%	3	100.00%	99	100.00%	3	100.00%	329	100.00%

Average Age	18.46	17.25	20.00	18.50	16.60	16.33	21.64	21.00	19.66
-------------	-------	-------	-------	-------	-------	-------	-------	-------	-------

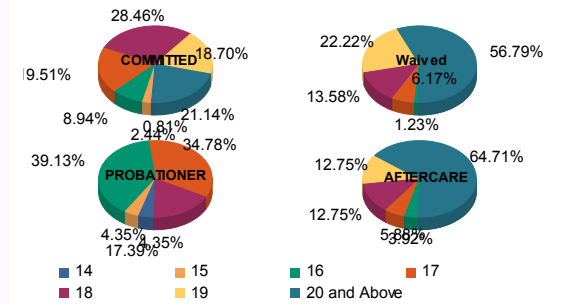
Sentencing County

ATL	4	3.36%	0	0.00%	6	7.59%	0	0.00%	2	10.00%	0	0.00%	1	1.01%	0	0.00%	13	3.95%
BER	3	2.52%	0	0.00%	0	0.00%	0	0.00%	1	5.00%	0	0.00%	2	2.02%	0	0.00%	6	1.82%
BUR	6	5.04%	0	0.00%	2	2.53%	0	0.00%	2	10.00%	0	0.00%	11	11.11%	0	0.00%	21	6.38%
CAM	33	27.73%	1	25.00%	4	5.06%	1	50.00%	1	5.00%	0	0.00%	16	16.16%	3	100.00%	59	17.93%
CUM	4	3.36%	0	0.00%	2	2.53%	0	0.00%	0	0.00%	0	0.00%	0	0.00%	0	0.00%	6	1.82%
ESS	28	23.53%	1	25.00%	6	7.59%	0	0.00%	1	5.00%	0	0.00%	22	22.22%	0	0.00%	58	17.63%
GLO	3	2.52%	0	0.00%	0	0.00%	0	0.00%	0	0.00%	0	0.00%	1	1.01%	0	0.00%	4	1.22%
HUD	5	4.20%	1	25.00%	4	5.06%	0	0.00%	1	5.00%	0	0.00%	1	1.01%	0	0.00%	12	3.65%
HUN	0	0.00%	0	0.00%	0	0.00%	0	0.00%	0	0.00%	0	0.00%	2	2.02%	0	0.00%	2	0.61%
MER	3	2.52%	0	0.00%	3	3.80%	0	0.00%	0	0.00%	0	0.00%	3	3.03%	0	0.00%	9	2.74%
MID	9	7.56%	0	0.00%	23	29.11%	1	50.00%	0	0.00%	0	0.00%	15	15.15%	0	0.00%	48	14.59%
MON	4	3.36%	0	0.00%	4	5.06%	0	0.00%	1	5.00%	1	33.33%	1	1.01%	0	0.00%	11	3.34%
MOR	1	0.84%	1	25.00%	0	0.00%	0	0.00%	0	0.00%	0	0.00%	0	0.00%	0	0.00%	2	0.61%
OCE	1	0.84%	0	0.00%	2	2.53%	0	0.00%	2	10.00%	0	0.00%	3	3.03%	0	0.00%	8	2.43%
PAS	8	6.72%	0	0.00%	16	20.25%	0	0.00%	4	20.00%	2	66.67%	11	11.11%	0	0.00%	41	12.46%
SAL	0	0.00%	0	0.00%	3	3.80%	0	0.00%	1	5.00%	0	0.00%	0	0.00%	0	0.00%	4	1.22%
UNI	7	5.88%	0	0.00%	4	5.06%	0	0.00%	2	10.00%	0	0.00%	6	6.06%	0	0.00%	19	5.78%
WAR	0	0.00%	0	0.00%	0	0.00%	0	0.00%	2	10.00%	0	0.00%	1	1.01%	0	0.00%	3	0.91%
OTHER	0	0.00%	0	0.00%	0	0.00%	0	0.00%	0	0.00%	0	0.00%	3	3.03%	0	0.00%	3	0.91%
Total	119	100.00%	4	100.00%	79	100.00%	2	100.00%	20	100.00%	3	100.00%	99	100.00%	3	100.00%	329	100.00%

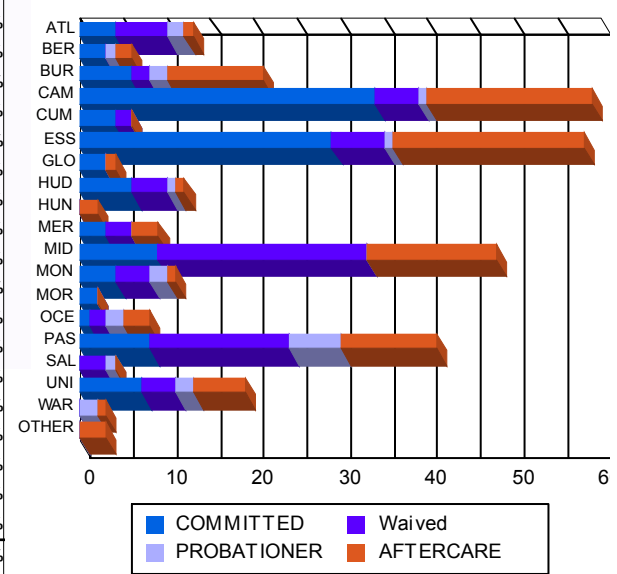
Race/Ethnicity Grouping



Age Grouping



Count of Juveniles By Sentencing County





NJ Office of the Attorney General Juvenile Justice Commission



*Statistics are for Friday, July 28, 2023

Juvenile Demographics and Statistics

Current Grade	COMMITTED		WAIVED		PROBATIONER		Total
	MALE	FEMALE	MALE	FEMALE	MALE	FEMALE	
7	0 (0.00%)	0 (0.00%)	0 (0.00%)	0 (0.00%)	1 (5.00%)	0 (0.00%)	1 (0.44%)
8	2 (1.68%)	0 (0.00%)	0 (0.00%)	0 (0.00%)	0 (0.00%)	0 (0.00%)	2 (0.88%)
9	12 (10.08%)	1 (25.00%)	2 (2.53%)	0 (0.00%)	5 (25.00%)	0 (0.00%)	20 (8.81%)
10	18 (15.13%)	1 (25.00%)	3 (3.80%)	1 (50.00%)	4 (20.00%)	1 (33.33%)	28 (12.33%)
11	25 (21.01%)	1 (25.00%)	5 (6.33%)	0 (0.00%)	6 (30.00%)	2 (66.67%)	39 (17.18%)
12	19 (15.97%)	0 (0.00%)	4 (5.06%)	0 (0.00%)	2 (10.00%)	0 (0.00%)	25 (11.01%)
HSG	40 (33.61%)	1 (25.00%)	62 (78.48%)	1 (50.00%)	0 (0.00%)	0 (0.00%)	104 (45.81%)
GED	3 (2.52%)	0 (0.00%)	2 (2.53%)	0 (0.00%)	0 (0.00%)	0 (0.00%)	5 (2.20%)
Others **	0 (0.00%)	0 (0.00%)	1 (1.27%)	0 (0.00%)	2 (10.00%)	0 (0.00%)	3 (1.32%)
Total	119 (100.00%)	4 (100.00%)	79 (100.00%)	2 (100.00%)	20 (100.00%)	3 (100.00%)	227 (100.00%)

** Includes Aged Out Juveniles and Pending Records

Special Education Services

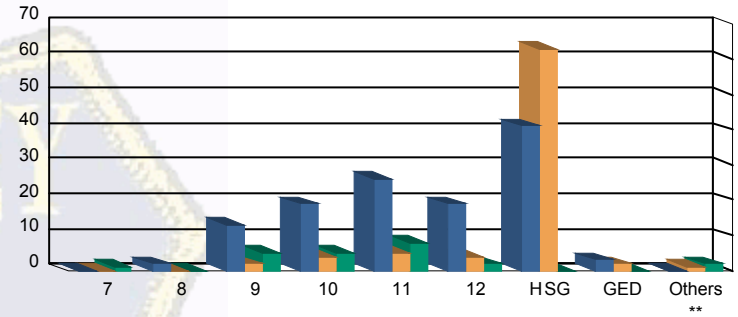
Yes	58 (48.74%)	3 (75.00%)	31 (39.24%)	1 (50.00%)	9 (45.00%)	1 (33.33%)	103 (45.37%)
No	53 (44.54%)	1 (25.00%)	33 (41.77%)	1 (50.00%)	9 (45.00%)	2 (66.67%)	99 (43.61%)
Pending	8 (6.72%)	0 (0.00%)	15 (18.99%)	0 (0.00%)	2 (10.00%)	0 (0.00%)	25 (11.01%)
Total	119 (100.00%)	4 (100.00%)	79 (100.00%)	2 (100.00%)	20 (100.00%)	3 (100.00%)	227 (100.00%)

Offense Categories

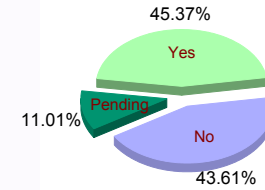
Drug	45 (5.42%)	0 (0.00%)	10 (4.24%)	0 (0.00%)	3 (4.48%)	0 (0.00%)	58 (5.00%)
Persons	229 (27.56%)	7 (36.84%)	122 (51.69%)	3 (100.00%)	15 (22.39%)	1 (25.00%)	377 (32.50%)
Property	147 (17.69%)	3 (15.79%)	26 (11.02%)	0 (0.00%)	12 (17.91%)	1 (25.00%)	189 (16.29%)
Public Order	100 (12.03%)	2 (10.53%)	14 (5.93%)	0 (0.00%)	5 (7.46%)	0 (0.00%)	121 (10.43%)
VOP	174 (20.94%)	4 (21.05%)	25 (10.59%)	0 (0.00%)	14 (20.90%)	1 (25.00%)	218 (18.79%)
Weapons	135 (16.25%)	3 (15.79%)	38 (16.10%)	0 (0.00%)	17 (25.37%)	1 (25.00%)	194 (16.72%)
Others Offenses	1 (0.12%)	0 (0.00%)	1 (0.42%)	0 (0.00%)	1 (1.49%)	0 (0.00%)	3 (0.26%)
Total *	831 (100.00%)	19 (100.00%)	236 (100.00%)	3 (100.00%)	67 (100.00%)	4 (100.00%)	1,160 (100.00%)

* Juveniles may have multiple offenses

Current Grade



Special Education



Offense Categories

