



NJ Office of the Attorney General Juvenile Justice Commission



*Statistics are for Friday, August 4, 2023

Juvenile Demographics and Statistics

Race/ Ethnicity	COMMITTED				WAIVED				PROBATIONER				AFTERCARE				Total	
	MALE		FEMALE		MALE		FEMALE		MALE		FEMALE		MALE		FEMALE			
BLACK	93	80.87%	3	75.00%	44	56.41%	2	100.00%	16	80.00%	4	80.00%	77	75.49%	1	33.33%	240	72.95%
HISPANIC	16	13.91%	0	0.00%	24	30.77%	0	0.00%	3	15.00%	1	20.00%	16	15.69%	0	0.00%	60	18.24%
WHITE	6	5.22%	1	25.00%	10	12.82%	0	0.00%	1	5.00%	0	0.00%	7	6.86%	2	66.67%	27	8.21%
ASIAN	0	0.00%	0	0.00%	0	0.00%	0	0.00%	0	0.00%	0	0.00%	1	0.98%	0	0.00%	1	0.30%
Others	0	0.00%	0	0.00%	0	0.00%	0	0.00%	0	0.00%	0	0.00%	1	0.98%	0	0.00%	1	0.30%
Total	115	100.00%	4	100.00%	78	100.00%	2	100.00%	20	100.00%	5	100.00%	102	100.00%	3	100.00%	329	100.00%

Age

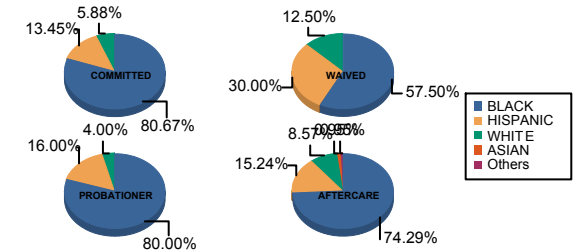
14	1	0.87%	0	0.00%	0	0.00%	0	0.00%	1	5.00%	0	0.00%	0	0.00%	0	0.00%	2	0.61%
15	3	2.61%	0	0.00%	0	0.00%	0	0.00%	1	5.00%	1	20.00%	0	0.00%	0	0.00%	5	1.52%
16	10	8.70%	1	25.00%	1	1.28%	0	0.00%	8	40.00%	2	40.00%	4	3.92%	0	0.00%	26	7.90%
17	21	18.26%	1	25.00%	3	3.85%	1	50.00%	6	30.00%	1	20.00%	7	6.86%	0	0.00%	40	12.16%
18	33	28.70%	2	50.00%	11	14.10%	0	0.00%	4	20.00%	1	20.00%	13	12.75%	0	0.00%	64	19.45%
19	21	18.26%	0	0.00%	18	23.08%	0	0.00%	0	0.00%	0	0.00%	14	13.73%	1	33.33%	54	16.41%
20 and Above	26	22.61%	0	0.00%	45	57.69%	1	50.00%	0	0.00%	0	0.00%	64	62.75%	2	66.67%	138	41.95%
Total	115	100.00%	4	100.00%	78	100.00%	2	100.00%	20	100.00%	5	100.00%	102	100.00%	3	100.00%	329	100.00%

Average Age	18.48	17.25	20.04	18.50	16.55	16.40	21.56	21.00	19.66
-------------	-------	-------	-------	-------	-------	-------	-------	-------	-------

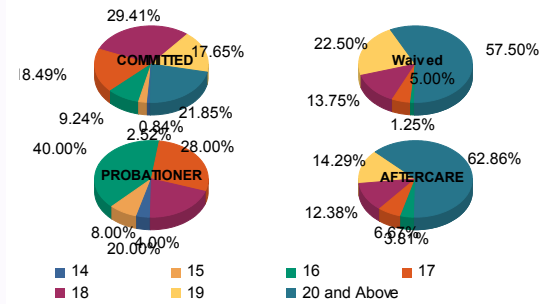
Sentencing County

ATL	4	3.48%	0	0.00%	6	7.69%	0	0.00%	2	10.00%	0	0.00%	1	0.98%	0	0.00%	13	3.95%
BER	3	2.61%	0	0.00%	0	0.00%	0	0.00%	1	5.00%	0	0.00%	2	1.96%	0	0.00%	6	1.82%
BUR	6	5.22%	0	0.00%	2	2.56%	0	0.00%	2	10.00%	0	0.00%	11	10.78%	0	0.00%	21	6.38%
CAM	33	28.70%	1	25.00%	4	5.13%	1	50.00%	0	0.00%	0	0.00%	16	15.69%	3	100.00%	58	17.63%
CUM	3	2.61%	0	0.00%	2	2.56%	0	0.00%	0	0.00%	0	0.00%	1	0.98%	0	0.00%	6	1.82%
ESS	28	24.35%	1	25.00%	6	7.69%	0	0.00%	1	5.00%	0	0.00%	22	21.57%	0	0.00%	58	17.63%
GLO	3	2.61%	0	0.00%	0	0.00%	0	0.00%	0	0.00%	0	0.00%	1	0.98%	0	0.00%	4	1.22%
HUD	5	4.35%	1	25.00%	4	5.13%	0	0.00%	2	10.00%	0	0.00%	1	0.98%	0	0.00%	13	3.95%
HUN	0	0.00%	0	0.00%	0	0.00%	0	0.00%	0	0.00%	0	0.00%	2	1.96%	0	0.00%	2	0.61%
MER	3	2.61%	0	0.00%	3	3.85%	0	0.00%	0	0.00%	0	0.00%	3	2.94%	0	0.00%	9	2.74%
MID	9	7.83%	0	0.00%	22	28.21%	1	50.00%	0	0.00%	0	0.00%	15	14.71%	0	0.00%	47	14.29%
MON	3	2.61%	0	0.00%	4	5.13%	0	0.00%	1	5.00%	1	20.00%	1	0.98%	0	0.00%	10	3.04%
MOR	1	0.87%	1	25.00%	0	0.00%	0	0.00%	0	0.00%	0	0.00%	0	0.00%	0	0.00%	2	0.61%
OCE	0	0.00%	0	0.00%	2	2.56%	0	0.00%	2	10.00%	0	0.00%	4	3.92%	0	0.00%	8	2.43%
PAS	7	6.09%	0	0.00%	16	20.51%	0	0.00%	4	20.00%	4	80.00%	12	11.76%	0	0.00%	43	13.07%
SAL	0	0.00%	0	0.00%	3	3.85%	0	0.00%	1	5.00%	0	0.00%	0	0.00%	0	0.00%	4	1.22%
UNI	7	6.09%	0	0.00%	4	5.13%	0	0.00%	2	10.00%	0	0.00%	6	5.88%	0	0.00%	19	5.78%
WAR	0	0.00%	0	0.00%	0	0.00%	0	0.00%	2	10.00%	0	0.00%	1	0.98%	0	0.00%	3	0.91%
OTHER	0	0.00%	0	0.00%	0	0.00%	0	0.00%	0	0.00%	0	0.00%	3	2.94%	0	0.00%	3	0.91%
Total	115	100.00%	4	100.00%	78	100.00%	2	100.00%	20	100.00%	5	100.00%	102	100.00%	3	100.00%	329	100.00%

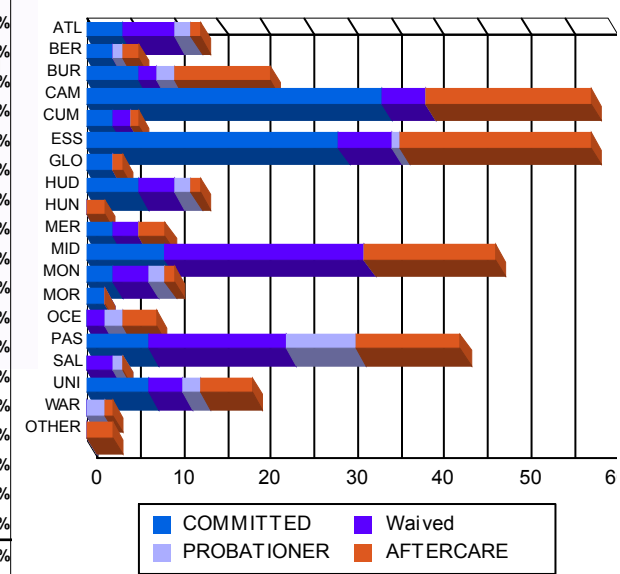
Race/Ethnicity Grouping



Age Grouping



Count of Juveniles By Sentencing County





NJ Office of the Attorney General Juvenile Justice Commission



*Statistics are for Friday, August 4, 2023

Juvenile Demographics and Statistics

Current Grade	COMMITTED		WAIVED		PROBATIONER		Total
	MALE	FEMALE	MALE	FEMALE	MALE	FEMALE	
7	0 (0.00%)	0 (0.00%)	0 (0.00%)	0 (0.00%)	1 (5.00%)	0 (0.00%)	1 (0.45%)
8	2 (1.74%)	0 (0.00%)	0 (0.00%)	0 (0.00%)	0 (0.00%)	0 (0.00%)	2 (0.89%)
9	10 (8.70%)	1 (25.00%)	2 (2.56%)	0 (0.00%)	6 (30.00%)	0 (0.00%)	19 (8.48%)
10	17 (14.78%)	1 (25.00%)	3 (3.85%)	1 (50.00%)	3 (15.00%)	1 (20.00%)	26 (11.61%)
11	26 (22.61%)	1 (25.00%)	5 (6.41%)	0 (0.00%)	6 (30.00%)	2 (40.00%)	40 (17.86%)
12	17 (14.78%)	0 (0.00%)	4 (5.13%)	0 (0.00%)	2 (10.00%)	0 (0.00%)	23 (10.27%)
HSG	40 (34.78%)	1 (25.00%)	61 (78.21%)	1 (50.00%)	0 (0.00%)	0 (0.00%)	103 (45.98%)
GED	3 (2.61%)	0 (0.00%)	2 (2.56%)	0 (0.00%)	0 (0.00%)	0 (0.00%)	5 (2.23%)
Others **	0 (0.00%)	0 (0.00%)	1 (1.28%)	0 (0.00%)	2 (10.00%)	2 (40.00%)	5 (2.23%)
Total	115 (100.00%)	4 (100.00%)	78 (100.00%)	2 (100.00%)	20 (100.00%)	5 (100.00%)	224 (100.00%)

** Includes Aged Out Juveniles and Pending Records

Special Education Services

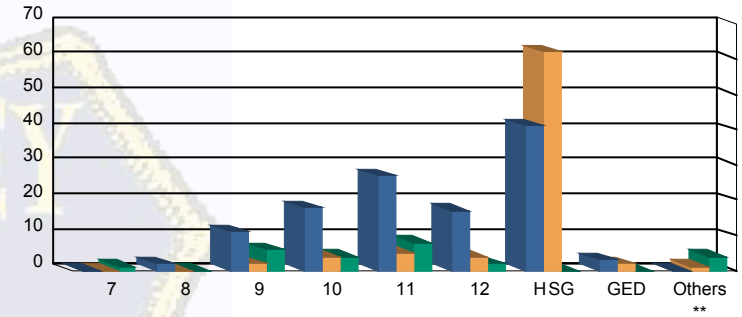
Yes	55 (47.83%)	3 (75.00%)	30 (38.46%)	1 (50.00%)	8 (40.00%)	1 (20.00%)	98 (43.75%)
No	52 (45.22%)	1 (25.00%)	33 (42.31%)	1 (50.00%)	10 (50.00%)	2 (40.00%)	99 (44.20%)
Pending	8 (6.96%)	0 (0.00%)	15 (19.23%)	0 (0.00%)	2 (10.00%)	2 (40.00%)	27 (12.05%)
Total	115 (100.00%)	4 (100.00%)	78 (100.00%)	2 (100.00%)	20 (100.00%)	5 (100.00%)	224 (100.00%)

Offense Categories

Drug	45 (5.43%)	0 (0.00%)	10 (4.24%)	0 (0.00%)	3 (4.05%)	0 (0.00%)	58 (4.97%)
Persons	229 (27.66%)	7 (36.84%)	122 (51.69%)	3 (100.00%)	18 (24.32%)	2 (28.57%)	381 (32.65%)
Property	146 (17.63%)	3 (15.79%)	26 (11.02%)	0 (0.00%)	14 (18.92%)	1 (14.29%)	190 (16.28%)
Public Order	99 (11.96%)	2 (10.53%)	14 (5.93%)	0 (0.00%)	6 (8.11%)	0 (0.00%)	121 (10.37%)
VOP	173 (20.89%)	4 (21.05%)	25 (10.59%)	0 (0.00%)	15 (20.27%)	3 (42.86%)	220 (18.85%)
Weapons	135 (16.30%)	3 (15.79%)	38 (16.10%)	0 (0.00%)	17 (22.97%)	1 (14.29%)	194 (16.62%)
Others Offenses	1 (0.12%)	0 (0.00%)	1 (0.42%)	0 (0.00%)	1 (1.35%)	0 (0.00%)	3 (0.26%)
Total *	828 (100.00%)	19 (100.00%)	236 (100.00%)	3 (100.00%)	74 (100.00%)	7 (100.00%)	1,167 (100.00%)

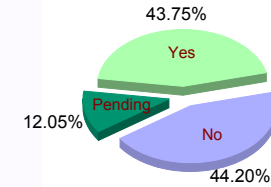
* Juveniles may have multiple offenses

Current Grade



■ COMMITTED ■ WAIVED ■ PROBATIONER

Special Education



Offense Categories

