



# NJ Office of the Attorney General Juvenile Justice Commission



\*Statistics are for Friday, August 25, 2023

## Juvenile Demographics and Statistics

Race/ Ethnicity	COMMITTED				WAIVED				PROBATIONER				AFTERCARE				Total	
	MALE		FEMALE		MALE		FEMALE		MALE		FEMALE		MALE		FEMALE			
BLACK	94	81.74%	3	75.00%	45	55.56%	2	100.00%	15	75.00%	3	100.00%	74	76.29%	1	33.33%	237	72.92%
HISPANIC	15	13.04%	0	0.00%	25	30.86%	0	0.00%	4	20.00%	0	0.00%	14	14.43%	0	0.00%	58	17.85%
WHITE	6	5.22%	1	25.00%	10	12.35%	0	0.00%	1	5.00%	0	0.00%	7	7.22%	2	66.67%	27	8.31%
ASIAN	0	0.00%	0	0.00%	0	0.00%	0	0.00%	0	0.00%	0	0.00%	1	1.03%	0	0.00%	1	0.31%
Others	0	0.00%	0	0.00%	1	1.23%	0	0.00%	0	0.00%	0	0.00%	1	1.03%	0	0.00%	2	0.62%
Total	115	100.00%	4	100.00%	81	100.00%	2	100.00%	20	100.00%	3	100.00%	97	100.00%	3	100.00%	325	100.00%

## Age

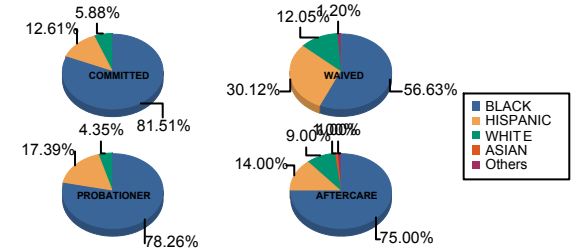
14	1	0.87%	0	0.00%	0	0.00%	0	0.00%	0	0.00%	0	0.00%	0	0.00%	0	0.00%	1	0.31%
15	3	2.61%	0	0.00%	0	0.00%	0	0.00%	1	5.00%	1	33.33%	0	0.00%	0	0.00%	5	1.54%
16	9	7.83%	1	25.00%	2	2.47%	0	0.00%	8	40.00%	0	0.00%	4	4.12%	0	0.00%	24	7.38%
17	23	20.00%	1	25.00%	3	3.70%	1	50.00%	7	35.00%	1	33.33%	7	7.22%	0	0.00%	43	13.23%
18	31	26.96%	2	50.00%	13	16.05%	0	0.00%	4	20.00%	1	33.33%	13	13.40%	0	0.00%	64	19.69%
19	20	17.39%	0	0.00%	15	18.52%	0	0.00%	0	0.00%	0	0.00%	12	12.37%	1	33.33%	48	14.77%
20 and Above	28	24.35%	0	0.00%	48	59.26%	1	50.00%	0	0.00%	0	0.00%	61	62.89%	2	66.67%	140	43.08%
Total	115	100.00%	4	100.00%	81	100.00%	2	100.00%	20	100.00%	3	100.00%	97	100.00%	3	100.00%	325	100.00%

Average Age	18.49	17.25	20.01	18.50	16.70	16.67	21.55	21.00	19.66
-------------	-------	-------	-------	-------	-------	-------	-------	-------	-------

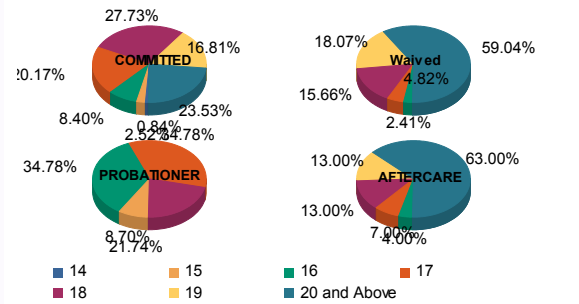
## Sentencing County

ATL	5	4.35%	0	0.00%	7	8.64%	0	0.00%	2	10.00%	0	0.00%	1	1.03%	0	0.00%	15	4.62%
BER	4	3.48%	0	0.00%	0	0.00%	0	0.00%	2	10.00%	0	0.00%	1	1.03%	0	0.00%	7	2.15%
BUR	6	5.22%	0	0.00%	2	2.47%	0	0.00%	1	5.00%	0	0.00%	10	10.31%	0	0.00%	19	5.85%
CAM	33	28.70%	1	25.00%	4	4.94%	1	50.00%	0	0.00%	0	0.00%	15	15.46%	3	100.00%	57	17.54%
CUM	3	2.61%	0	0.00%	2	2.47%	0	0.00%	0	0.00%	0	0.00%	1	1.03%	0	0.00%	6	1.85%
ESS	27	23.48%	1	25.00%	6	7.41%	0	0.00%	1	5.00%	0	0.00%	21	21.65%	0	0.00%	56	17.23%
GLO	3	2.61%	0	0.00%	0	0.00%	0	0.00%	0	0.00%	0	0.00%	1	1.03%	0	0.00%	4	1.23%
HUD	5	4.35%	1	25.00%	4	4.94%	0	0.00%	3	15.00%	0	0.00%	2	2.06%	0	0.00%	15	4.62%
HUN	0	0.00%	0	0.00%	0	0.00%	0	0.00%	0	0.00%	0	0.00%	2	2.06%	0	0.00%	2	0.62%
MER	3	2.61%	0	0.00%	3	3.70%	0	0.00%	0	0.00%	0	0.00%	3	3.09%	0	0.00%	9	2.77%
MID	9	7.83%	0	0.00%	24	29.63%	1	50.00%	0	0.00%	0	0.00%	13	13.40%	0	0.00%	47	14.46%
MON	3	2.61%	0	0.00%	4	4.94%	0	0.00%	2	10.00%	1	33.33%	1	1.03%	0	0.00%	11	3.38%
MOR	1	0.87%	1	25.00%	0	0.00%	0	0.00%	0	0.00%	0	0.00%	0	0.00%	0	0.00%	2	0.62%
OCE	0	0.00%	0	0.00%	2	2.47%	0	0.00%	2	10.00%	0	0.00%	3	3.09%	0	0.00%	7	2.15%
PAS	6	5.22%	0	0.00%	16	19.75%	0	0.00%	3	15.00%	2	66.67%	13	13.40%	0	0.00%	40	12.31%
SAL	0	0.00%	0	0.00%	3	3.70%	0	0.00%	1	5.00%	0	0.00%	0	0.00%	0	0.00%	4	1.23%
UNI	7	6.09%	0	0.00%	4	4.94%	0	0.00%	1	5.00%	0	0.00%	6	6.19%	0	0.00%	18	5.54%
WAR	0	0.00%	0	0.00%	0	0.00%	0	0.00%	2	10.00%	0	0.00%	1	1.03%	0	0.00%	3	0.92%
OTHER	0	0.00%	0	0.00%	0	0.00%	0	0.00%	0	0.00%	0	0.00%	3	3.09%	0	0.00%	3	0.92%
Total	115	100.00%	4	100.00%	81	100.00%	2	100.00%	20	100.00%	3	100.00%	97	100.00%	3	100.00%	325	100.00%

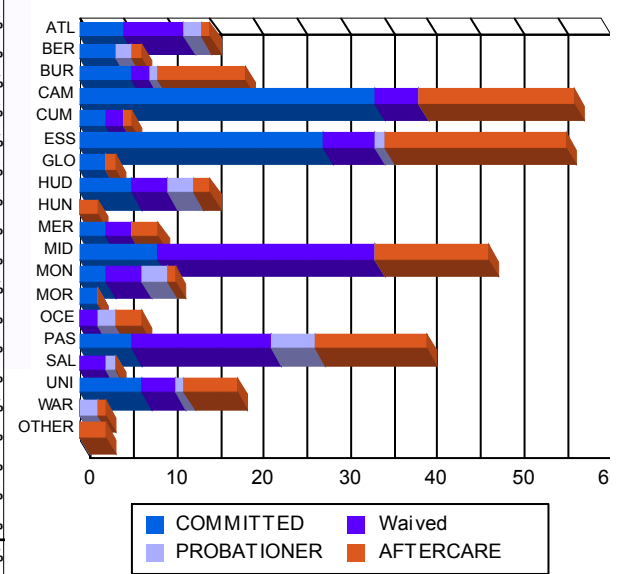
## Race/Ethnicity Grouping



## Age Grouping



## Count of Juveniles By Sentencing County





# NJ Office of the Attorney General Juvenile Justice Commission



\*Statistics are for Friday, August 25, 2023

## Juvenile Demographics and Statistics

Current Grade	COMMITTED		WAIVED		PROBATIONER		Total
	MALE	FEMALE	MALE	FEMALE	MALE	FEMALE	
8	2 (1.74%)	0 0.00%	0 0.00%	0 0.00%	0 0.00%	0 0.00%	2 (0.89%)
9	10 (8.70%)	1 (25.00%)	2 (2.47%)	0 0.00%	7 (35.00%)	0 0.00%	20 (8.89%)
10	15 (13.04%)	1 (25.00%)	4 (4.94%)	0 0.00%	6 (30.00%)	0 0.00%	26 (11.56%)
11	26 (22.61%)	1 (25.00%)	6 (7.41%)	1 (50.00%)	5 (25.00%)	2 (66.67%)	41 (18.22%)
12	17 (14.78%)	0 0.00%	3 (3.70%)	0 0.00%	2 (10.00%)	0 0.00%	22 (9.78%)
HSG	39 (33.91%)	1 (25.00%)	63 (77.78%)	1 (50.00%)	0 0.00%	1 (33.33%)	105 (46.67%)
GED	3 (2.61%)	0 0.00%	2 (2.47%)	0 0.00%	0 0.00%	0 0.00%	5 (2.22%)
Others **	3 (2.61%)	0 0.00%	1 (1.23%)	0 0.00%	0 0.00%	0 0.00%	4 (1.78%)
Total	115 (100.00%)	4 (100.00%)	81 (100.00%)	2 (100.00%)	20 (100.00%)	3 (100.00%)	225 (100.00%)

\*\* Includes Aged Out Juveniles and Pending Records

## Special Education Services

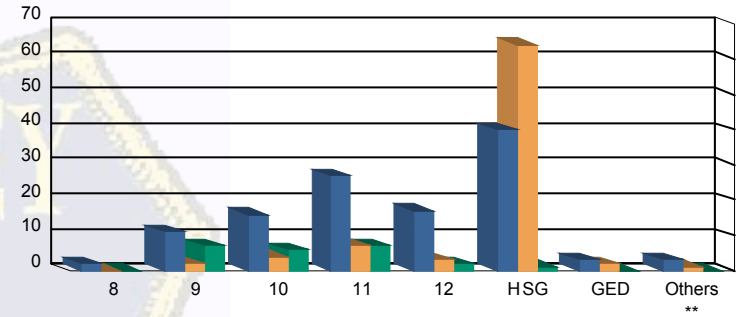
Yes	53 (46.09%)	3 (75.00%)	31 (38.27%)	1 (50.00%)	5 (25.00%)	1 (33.33%)	94 (41.78%)
No	53 (46.09%)	1 (25.00%)	34 (41.98%)	1 (50.00%)	15 (75.00%)	2 (66.67%)	106 (47.11%)
Pending	9 (7.83%)	0 0.00%	16 (19.75%)	0 0.00%	0 0.00%	0 0.00%	25 (11.11%)
Total	115 (100.00%)	4 (100.00%)	81 (100.00%)	2 (100.00%)	20 (100.00%)	3 (100.00%)	225 (100.00%)

## Offense Categories

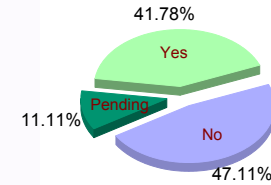
Drug	48 (5.83%)	0 0.00%	10 (4.02%)	0 0.00%	3 (4.23%)	0 0.00%	61 (5.21%)
Persons	226 (27.46%)	7 (36.84%)	126 (50.60%)	3 (100.00%)	18 (25.35%)	2 (40.00%)	382 (32.65%)
Property	145 (17.62%)	3 (15.79%)	28 (11.24%)	0 0.00%	12 (16.90%)	0 0.00%	188 (16.07%)
Public Order	98 (11.91%)	2 (10.53%)	15 (6.02%)	0 0.00%	6 (8.45%)	0 0.00%	121 (10.34%)
VOP	170 (20.66%)	4 (21.05%)	28 (11.24%)	0 0.00%	14 (19.72%)	3 (60.00%)	219 (18.72%)
Weapons	135 (16.40%)	3 (15.79%)	41 (16.47%)	0 0.00%	17 (23.94%)	0 0.00%	196 (16.75%)
Others Offenses	1 (0.12%)	0 0.00%	1 (0.40%)	0 0.00%	1 (1.41%)	0 0.00%	3 (0.26%)
Total *	823 (100.00%)	19 (100.00%)	249 (100.00%)	3 (100.00%)	71 (100.00%)	5 (100.00%)	1,170 (100.00%)

\* Juveniles may have multiple offenses

Current Grade



Special Education



Offense Categories

