



NJ Office of the Attorney General Juvenile Justice Commission



*Statistics are for Friday, November 3, 2023

Juvenile Demographics and Statistics

Race/ Ethnicity	COMMITTED				WAIVED				PROBATIONER				AFTERCARE				Total	
	MALE		FEMALE		MALE		FEMALE		MALE		FEMALE		MALE		FEMALE			
BLACK	100	80.00%	2	100.00%	49	56.98%	2	100.00%	14	63.64%	2	66.67%	69	74.19%	2	66.67%	240	71.43%
HISPANIC	15	12.00%	0	0.00%	25	29.07%	0	0.00%	4	18.18%	1	33.33%	17	18.28%	0	0.00%	62	18.45%
WHITE	10	8.00%	0	0.00%	12	13.95%	0	0.00%	3	13.64%	0	0.00%	6	6.45%	1	33.33%	32	9.52%
Others	0	0.00%	0	0.00%	0	0.00%	0	0.00%	1	4.55%	0	0.00%	1	1.08%	0	0.00%	2	0.60%
Total	125	100.00%	2	100.00%	86	100.00%	2	100.00%	22	100.00%	3	100.00%	93	100.00%	3	100.00%	336	100.00%

Age

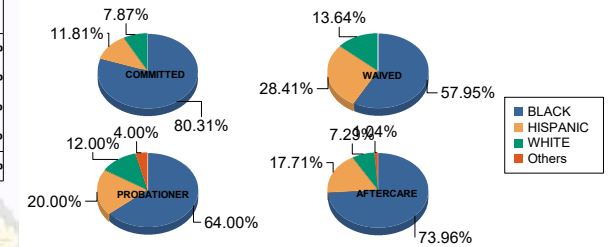
14	1	0.80%	0	0.00%	0	0.00%	0	0.00%	2	9.09%	1	33.33%	0	0.00%	0	0.00%	4	1.19%
15	8	6.40%	0	0.00%	0	0.00%	0	0.00%	1	4.55%	0	0.00%	1	1.08%	0	0.00%	10	2.98%
16	13	10.40%	1	50.00%	2	2.33%	0	0.00%	8	36.36%	1	33.33%	1	1.08%	0	0.00%	26	7.74%
17	19	15.20%	0	0.00%	3	3.49%	1	50.00%	5	22.73%	0	0.00%	4	4.30%	0	0.00%	32	9.52%
18	31	24.80%	1	50.00%	12	13.95%	0	0.00%	6	27.27%	1	33.33%	13	13.98%	1	33.33%	65	19.35%
19	23	18.40%	0	0.00%	19	22.09%	0	0.00%	0	0.00%	0	0.00%	13	13.98%	0	0.00%	55	16.37%
20 and Above	30	24.00%	0	0.00%	50	58.14%	1	50.00%	0	0.00%	0	0.00%	61	65.59%	2	66.67%	144	42.86%
Total	125	100.00%	2	100.00%	86	100.00%	2	100.00%	22	100.00%	3	100.00%	93	100.00%	3	100.00%	336	100.00%

Average Age	18.42	17.00	20.06	18.50	16.55	16.00	21.78	20.67	19.64
-------------	-------	-------	-------	-------	-------	-------	-------	-------	-------

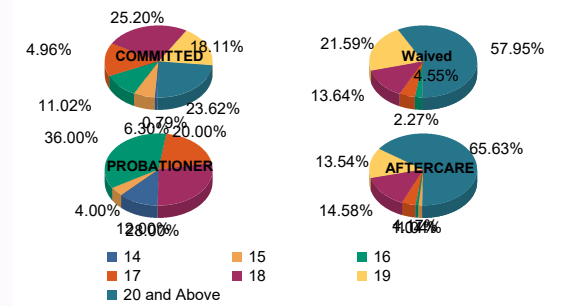
Sentencing County

ATL	5	4.00%	0	0.00%	8	9.30%	0	0.00%	2	9.09%	0	0.00%	0	0.00%	0	0.00%	15	4.46%
BER	4	3.20%	0	0.00%	0	0.00%	0	0.00%	1	4.55%	0	0.00%	3	3.23%	0	0.00%	8	2.38%
BUR	6	4.80%	0	0.00%	2	2.33%	0	0.00%	1	4.55%	0	0.00%	7	7.53%	0	0.00%	16	4.76%
CAM	33	26.40%	0	0.00%	7	8.14%	1	50.00%	0	0.00%	0	0.00%	15	16.13%	3	100.00%	59	17.56%
CUM	3	2.40%	0	0.00%	2	2.33%	0	0.00%	1	4.55%	0	0.00%	2	2.15%	0	0.00%	8	2.38%
ESS	29	23.20%	1	50.00%	6	6.98%	0	0.00%	1	4.55%	0	0.00%	21	22.58%	0	0.00%	58	17.26%
GLO	4	3.20%	0	0.00%	0	0.00%	0	0.00%	0	0.00%	0	0.00%	1	1.08%	0	0.00%	5	1.49%
HUD	8	6.40%	1	50.00%	4	4.65%	0	0.00%	3	13.64%	0	0.00%	2	2.15%	0	0.00%	18	5.36%
HUN	1	0.80%	0	0.00%	0	0.00%	0	0.00%	0	0.00%	0	0.00%	1	1.08%	0	0.00%	2	0.60%
MER	2	1.60%	0	0.00%	4	4.65%	0	0.00%	2	9.09%	0	0.00%	4	4.30%	0	0.00%	12	3.57%
MID	10	8.00%	0	0.00%	23	26.74%	1	50.00%	2	9.09%	0	0.00%	11	11.83%	0	0.00%	47	13.99%
MON	3	2.40%	0	0.00%	4	4.65%	0	0.00%	2	9.09%	0	0.00%	1	1.08%	0	0.00%	10	2.98%
MOR	0	0.00%	0	0.00%	0	0.00%	0	0.00%	0	0.00%	0	0.00%	1	1.08%	0	0.00%	1	0.30%
OCE	1	0.80%	0	0.00%	2	2.33%	0	0.00%	2	9.09%	0	0.00%	3	3.23%	0	0.00%	8	2.38%
PAS	6	4.80%	0	0.00%	16	18.60%	0	0.00%	2	9.09%	3	100.00%	12	12.90%	0	0.00%	39	11.61%
SAL	0	0.00%	0	0.00%	3	3.49%	0	0.00%	0	0.00%	0	0.00%	0	0.00%	0	0.00%	3	0.89%
SUS	0	0.00%	0	0.00%	1	1.16%	0	0.00%	0	0.00%	0	0.00%	0	0.00%	0	0.00%	1	0.30%
UNI	10	8.00%	0	0.00%	4	4.65%	0	0.00%	1	4.55%	0	0.00%	7	7.53%	0	0.00%	22	6.55%
WAR	0	0.00%	0	0.00%	0	0.00%	0	0.00%	2	9.09%	0	0.00%	0	0.00%	0	0.00%	2	0.60%
OTHER	0	0.00%	0	0.00%	0	0.00%	0	0.00%	0	0.00%	0	0.00%	2	2.15%	0	0.00%	2	0.60%
Total	125	100.00%	2	100.00%	86	100.00%	2	100.00%	22	100.00%	3	100.00%	93	100.00%	3	100.00%	336	100.00%

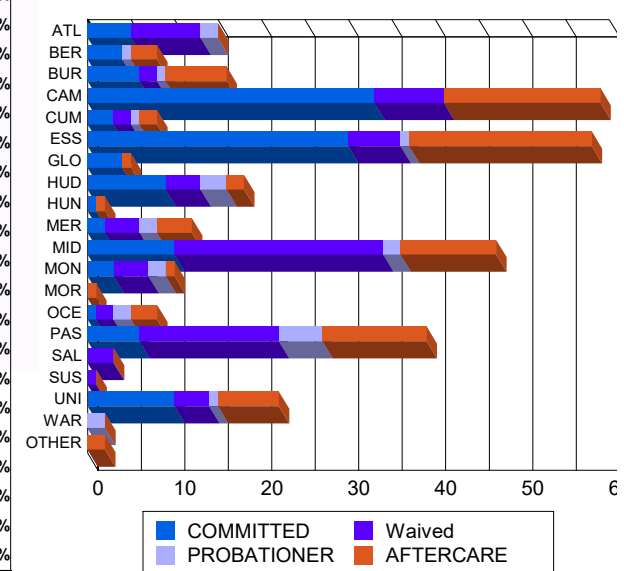
Race/Ethnicity Grouping



Age Grouping



Count of Juveniles By Sentencing County





NJ Office of the Attorney General Juvenile Justice Commission



*Statistics are for Friday, November 3, 2023

Juvenile Demographics and Statistics

Current Grade	COMMITTED		WAIVED		PROBATIONER		Total
	MALE	FEMALE	MALE	FEMALE	MALE	FEMALE	
8	2 (1.60%)	0 0.00%	0 0.00%	0 0.00%	1 (4.55%)	0 0.00%	3 (1.25%)
9	18 (14.40%)	0 0.00%	1 (1.16%)	0 0.00%	4 (18.18%)	1 (33.33%)	24 (10.00%)
10	19 (15.20%)	1 (50.00%)	8 (9.30%)	0 0.00%	9 (40.91%)	0 0.00%	37 (15.42%)
11	21 (16.80%)	1 (50.00%)	3 (3.49%)	1 (50.00%)	5 (22.73%)	1 (33.33%)	32 (13.33%)
12	15 (12.00%)	0 0.00%	4 (4.65%)	0 0.00%	2 (9.09%)	0 0.00%	21 (8.75%)
HSG	43 (34.40%)	0 0.00%	66 (76.74%)	1 (50.00%)	0 0.00%	1 (33.33%)	111 (46.25%)
GED	3 (2.40%)	0 0.00%	2 (2.33%)	0 0.00%	0 0.00%	0 0.00%	5 (2.08%)
Others **	4 (3.20%)	0 0.00%	2 (2.33%)	0 0.00%	1 (4.55%)	0 0.00%	7 (2.92%)
Total	125 (100.00%)	2 (100.00%)	86 (100.00%)	2 (100.00%)	22 (100.00%)	3 (100.00%)	240 (100.00%)

** Includes Aged Out Juveniles and Pending Records

Special Education Services

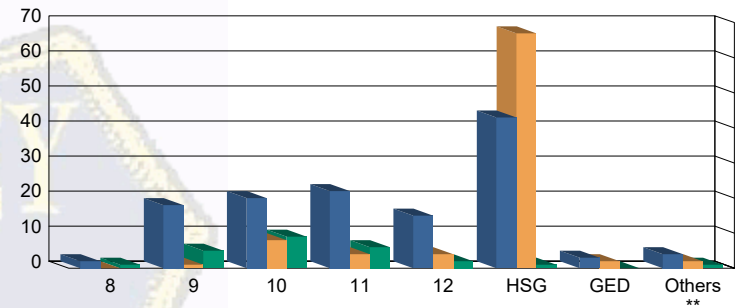
Yes	59 (47.20%)	1 (50.00%)	34 (39.53%)	1 (50.00%)	7 (31.82%)	0 0.00%	102 (42.50%)
No	60 (48.00%)	1 (50.00%)	35 (40.70%)	1 (50.00%)	14 (63.64%)	3 (100.00%)	114 (47.50%)
Pending	6 (4.80%)	0 0.00%	17 (19.77%)	0 0.00%	1 (4.55%)	0 0.00%	24 (10.00%)
Total	125 (100.00%)	2 (100.00%)	86 (100.00%)	2 (100.00%)	22 (100.00%)	3 (100.00%)	240 (100.00%)

Offense Categories

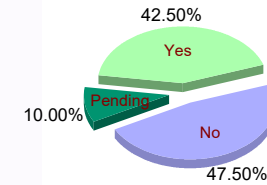
Drug	45 (5.44%)	0 0.00%	9 (3.49%)	0 0.00%	5 (7.94%)	1 (11.11%)	60 (5.11%)
Persons	221 (26.72%)	7 (46.67%)	132 (51.16%)	3 (100.00%)	15 (23.81%)	3 (33.33%)	381 (32.43%)
Property	144 (17.41%)	2 (13.33%)	28 (10.85%)	0 0.00%	8 (12.70%)	2 (22.22%)	184 (15.66%)
Public Order	102 (12.33%)	2 (13.33%)	18 (6.98%)	0 0.00%	5 (7.94%)	0 0.00%	127 (10.81%)
VOP	169 (20.44%)	2 (13.33%)	28 (10.85%)	0 0.00%	15 (23.81%)	3 (33.33%)	217 (18.47%)
Weapons	145 (17.53%)	2 (13.33%)	42 (16.28%)	0 0.00%	14 (22.22%)	0 0.00%	203 (17.28%)
Others Offenses	1 (0.12%)	0 0.00%	1 (0.39%)	0 0.00%	1 (1.59%)	0 0.00%	3 (0.26%)
Total *	827 (100.00%)	15 (100.00%)	258 (100.00%)	3 (100.00%)	63 (100.00%)	9 (100.00%)	1,175 (100.00%)

* Juveniles may have multiple offenses

Current Grade



Special Education



Offense Categories

