



NJ Office of the Attorney General Juvenile Justice Commission



*Statistics are for Friday, November 24, 2023

Juvenile Demographics and Statistics

Race/ Ethnicity	COMMITTED				WAIVED				PROBATIONER				AFTERCARE				Total	
	MALE		FEMALE		MALE		FEMALE		MALE		FEMALE		MALE		FEMALE			
BLACK	95	79.83%	2	100.00%	48	56.47%	2	100.00%	16	64.00%	3	75.00%	70	74.47%	2	66.67%	238	71.26%
HISPANIC	16	13.45%	0	0.00%	25	29.41%	0	0.00%	5	20.00%	1	25.00%	16	17.02%	0	0.00%	63	18.86%
WHITE	8	6.72%	0	0.00%	12	14.12%	0	0.00%	3	12.00%	0	0.00%	7	7.45%	1	33.33%	31	9.28%
Others	0	0.00%	0	0.00%	0	0.00%	0	0.00%	1	4.00%	0	0.00%	1	1.06%	0	0.00%	2	0.60%
Total	119	100.00%	2	100.00%	85	100.00%	2	100.00%	25	100.00%	4	100.00%	94	100.00%	3	100.00%	334	100.00%

Age

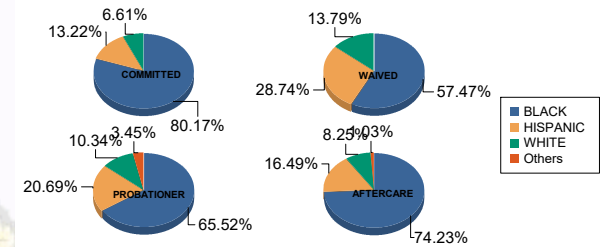
14	0	0.00%	0	0.00%	0	0.00%	0	0.00%	2	8.00%	2	50.00%	0	0.00%	0	0.00%	4	1.20%
15	9	7.56%	0	0.00%	0	0.00%	0	0.00%	1	4.00%	0	0.00%	1	1.06%	0	0.00%	11	3.29%
16	11	9.24%	1	50.00%	2	2.35%	0	0.00%	10	40.00%	1	25.00%	1	1.06%	0	0.00%	26	7.78%
17	22	18.49%	0	0.00%	4	4.71%	1	50.00%	7	28.00%	0	0.00%	2	2.13%	0	0.00%	36	10.78%
18	29	24.37%	1	50.00%	12	14.12%	0	0.00%	4	16.00%	1	25.00%	17	18.09%	0	0.00%	64	19.16%
19	22	18.49%	0	0.00%	16	18.82%	0	0.00%	1	4.00%	0	0.00%	12	12.77%	1	33.33%	52	15.57%
20 and Above	26	21.85%	0	0.00%	51	60.00%	1	50.00%	0	0.00%	0	0.00%	61	64.89%	2	66.67%	141	42.22%
Total	119	100.00%	2	100.00%	85	100.00%	2	100.00%	25	100.00%	4	100.00%	94	100.00%	3	100.00%	334	100.00%

Average Age	18.34	17.00	20.06	18.50	16.52	15.50	21.82	21.00	19.60
-------------	-------	-------	-------	-------	-------	-------	-------	-------	-------

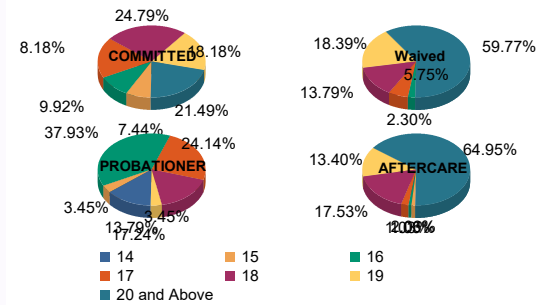
Sentencing County

ATL	5	4.20%	0	0.00%	8	9.41%	0	0.00%	3	12.00%	0	0.00%	0	0.00%	0	0.00%	16	4.79%
BER	3	2.52%	0	0.00%	0	0.00%	0	0.00%	1	4.00%	0	0.00%	5	5.32%	0	0.00%	9	2.69%
BUR	6	5.04%	0	0.00%	2	2.35%	0	0.00%	1	4.00%	0	0.00%	5	5.32%	0	0.00%	14	4.19%
CAM	31	26.05%	0	0.00%	7	8.24%	1	50.00%	1	4.00%	1	25.00%	17	18.09%	3	100.00%	61	18.26%
CUM	3	2.52%	0	0.00%	2	2.35%	0	0.00%	2	8.00%	0	0.00%	2	2.13%	0	0.00%	9	2.69%
ESS	28	23.53%	1	50.00%	4	4.71%	0	0.00%	1	4.00%	0	0.00%	21	22.34%	0	0.00%	55	16.47%
GLO	4	3.36%	0	0.00%	0	0.00%	0	0.00%	0	0.00%	0	0.00%	1	1.06%	0	0.00%	5	1.50%
HUD	7	5.88%	1	50.00%	4	4.71%	0	0.00%	3	12.00%	0	0.00%	2	2.13%	0	0.00%	17	5.09%
HUN	0	0.00%	0	0.00%	0	0.00%	0	0.00%	0	0.00%	0	0.00%	2	2.13%	0	0.00%	2	0.60%
MER	2	1.68%	0	0.00%	4	4.71%	0	0.00%	1	4.00%	0	0.00%	4	4.26%	0	0.00%	11	3.29%
MID	9	7.56%	0	0.00%	24	28.24%	1	50.00%	3	12.00%	0	0.00%	11	11.70%	0	0.00%	48	14.37%
MON	3	2.52%	0	0.00%	4	4.71%	0	0.00%	2	8.00%	0	0.00%	1	1.06%	0	0.00%	10	2.99%
MOR	0	0.00%	0	0.00%	0	0.00%	0	0.00%	0	0.00%	0	0.00%	1	1.06%	0	0.00%	1	0.30%
OCE	1	0.84%	0	0.00%	2	2.35%	0	0.00%	2	8.00%	0	0.00%	3	3.19%	0	0.00%	8	2.40%
PAS	8	6.72%	0	0.00%	16	18.82%	0	0.00%	2	8.00%	3	75.00%	11	11.70%	0	0.00%	40	11.98%
SAL	0	0.00%	0	0.00%	3	3.53%	0	0.00%	0	0.00%	0	0.00%	0	0.00%	0	0.00%	3	0.90%
SUS	0	0.00%	0	0.00%	1	1.18%	0	0.00%	0	0.00%	0	0.00%	0	0.00%	0	0.00%	1	0.30%
UNI	9	7.56%	0	0.00%	4	4.71%	0	0.00%	1	4.00%	0	0.00%	6	6.38%	0	0.00%	20	5.99%
WAR	0	0.00%	0	0.00%	0	0.00%	0	0.00%	2	8.00%	0	0.00%	0	0.00%	0	0.00%	2	0.60%
OTHER	0	0.00%	0	0.00%	0	0.00%	0	0.00%	0	0.00%	0	0.00%	2	2.13%	0	0.00%	2	0.60%
Total	119	100.00%	2	100.00%	85	100.00%	2	100.00%	25	100.00%	4	100.00%	94	100.00%	3	100.00%	334	100.00%

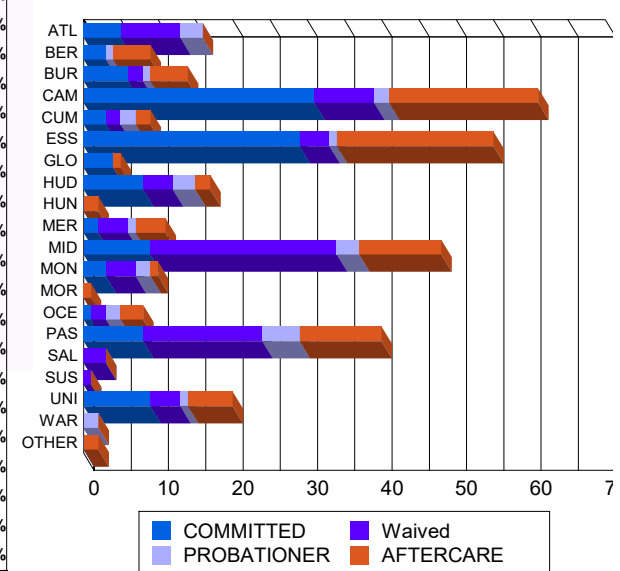
Race/Ethnicity Grouping



Age Grouping



Count of Juveniles By Sentencing County





NJ Office of the Attorney General Juvenile Justice Commission



*Statistics are for Friday, November 24, 2023

Juvenile Demographics and Statistics

Current Grade	COMMITTED		WAIVED		PROBATIONER		Total	
	MALE	FEMALE	MALE	FEMALE	MALE	FEMALE		
8	3 (2.52%)	0 0.00%	0 0.00%	0 0.00%	1 (4.00%)	1 (25.00%)	5	(2.11%)
9	17 (14.29%)	0 0.00%	1 (1.18%)	0 0.00%	5 (20.00%)	1 (25.00%)	24	(10.13%)
10	18 (15.13%)	1 (50.00%)	8 (9.41%)	0 0.00%	10 (40.00%)	0 0.00%	37	(15.61%)
11	20 (16.81%)	0 0.00%	3 (3.53%)	1 (50.00%)	6 (24.00%)	1 (25.00%)	31	(13.08%)
12	15 (12.61%)	1 (50.00%)	4 (4.71%)	0 0.00%	2 (8.00%)	0 0.00%	22	(9.28%)
HSG	39 (32.77%)	0 0.00%	64 (75.29%)	1 (50.00%)	0 0.00%	1 (25.00%)	105	(44.30%)
GED	2 (1.68%)	0 0.00%	2 (2.35%)	0 0.00%	0 0.00%	0 0.00%	4	(1.69%)
Others **	5 (4.20%)	0 0.00%	3 (3.53%)	0 0.00%	1 (4.00%)	0 0.00%	9	(3.80%)
Total	119 (100.00%)	2 (100.00%)	85 (100.00%)	2 (100.00%)	25 (100.00%)	4 (100.00%)	237	(100.00%)

** Includes Aged Out Juveniles and Pending Records

Special Education Services

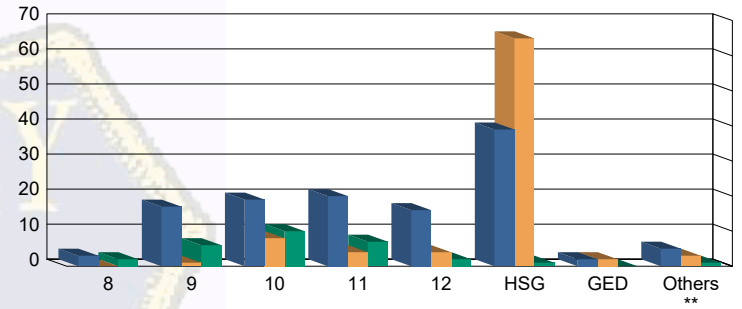
Yes	56 (47.06%)	1 (50.00%)	32 (37.65%)	1 (50.00%)	8 (32.00%)	0 0.00%	98	(41.35%)
No	56 (47.06%)	1 (50.00%)	35 (41.18%)	1 (50.00%)	16 (64.00%)	4 (100.00%)	113	(47.68%)
Pending	7 (5.88%)	0 0.00%	18 (21.18%)	0 0.00%	1 (4.00%)	0 0.00%	26	(10.97%)
Total	119 (100.00%)	2 (100.00%)	85 (100.00%)	2 (100.00%)	25 (100.00%)	4 (100.00%)	237	(100.00%)

Offense Categories

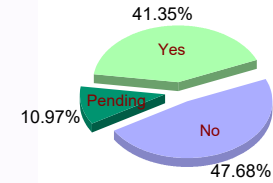
Drug	43 (5.33%)	0 0.00%	9 (3.44%)	0 0.00%	6 (8.22%)	1 (11.11%)	59	(5.06%)
Persons	216 (26.80%)	6 (42.86%)	134 (51.15%)	3 (100.00%)	15 (20.55%)	3 (33.33%)	377	(32.31%)
Property	139 (17.25%)	2 (14.29%)	28 (10.69%)	0 0.00%	11 (15.07%)	2 (22.22%)	182	(15.60%)
Public Order	100 (12.41%)	2 (14.29%)	18 (6.87%)	0 0.00%	6 (8.22%)	0 0.00%	126	(10.80%)
VOP	164 (20.35%)	2 (14.29%)	28 (10.69%)	0 0.00%	18 (24.66%)	3 (33.33%)	215	(18.42%)
Weapons	143 (17.74%)	2 (14.29%)	44 (16.79%)	0 0.00%	16 (21.92%)	0 0.00%	205	(17.57%)
Others Offenses	1 (0.12%)	0 0.00%	1 (0.38%)	0 0.00%	1 (1.37%)	0 0.00%	3	(0.26%)
Total *	806 (100.00%)	14 (100.00%)	262 (100.00%)	3 (100.00%)	73 (100.00%)	9 (100.00%)	1,167	(100.00%)

* Juveniles may have multiple offenses

Current Grade



Special Education



Offense Categories

