



NJ Office of the Attorney General Juvenile Justice Commission



*Statistics are for Friday, December 8, 2023

Juvenile Demographics and Statistics

Race/ Ethnicity	COMMITTED				WAIVED				PROBATIONER				AFTERCARE				Total	
	MALE		FEMALE		MALE		FEMALE		MALE		FEMALE		MALE		FEMALE			
BLACK	96	80.00%	2	100.00%	48	55.81%	2	100.00%	15	71.43%	3	100.00%	66	73.33%	2	66.67%	234	71.56%
HISPANIC	16	13.33%	0	0.00%	26	30.23%	0	0.00%	3	14.29%	0	0.00%	16	17.78%	0	0.00%	61	18.65%
WHITE	8	6.67%	0	0.00%	12	13.95%	0	0.00%	2	9.52%	0	0.00%	7	7.78%	1	33.33%	30	9.17%
Others	0	0.00%	0	0.00%	0	0.00%	0	0.00%	1	4.76%	0	0.00%	1	1.11%	0	0.00%	2	0.61%
Total	120	100.00%	2	100.00%	86	100.00%	2	100.00%	21	100.00%	3	100.00%	90	100.00%	3	100.00%	327	100.00%

Age

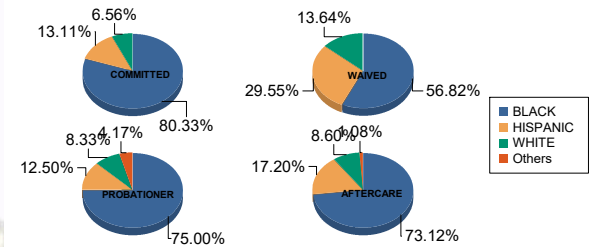
14	0	0.00%	0	0.00%	0	0.00%	0	0.00%	2	9.52%	1	33.33%	0	0.00%	0	0.00%	3	0.92%
15	8	6.67%	0	0.00%	0	0.00%	0	0.00%	1	4.76%	0	0.00%	1	1.11%	0	0.00%	10	3.06%
16	12	10.00%	1	50.00%	2	2.33%	0	0.00%	9	42.86%	1	33.33%	1	1.11%	0	0.00%	26	7.95%
17	23	19.17%	0	0.00%	4	4.65%	1	50.00%	4	19.05%	0	0.00%	2	2.22%	0	0.00%	34	10.40%
18	29	24.17%	1	50.00%	12	13.95%	0	0.00%	4	19.05%	1	33.33%	12	13.33%	0	0.00%	59	18.04%
19	22	18.33%	0	0.00%	16	18.60%	0	0.00%	1	4.76%	0	0.00%	13	14.44%	1	33.33%	53	16.21%
20 and Above	26	21.67%	0	0.00%	52	60.47%	1	50.00%	0	0.00%	0	0.00%	61	67.78%	2	66.67%	142	43.43%
Total	120	100.00%	2	100.00%	86	100.00%	2	100.00%	21	100.00%	3	100.00%	90	100.00%	3	100.00%	327	100.00%

Average Age	18.36	17.00	20.10	18.50	16.48	16.00	21.90	21.00	19.67
-------------	-------	-------	-------	-------	-------	-------	-------	-------	-------

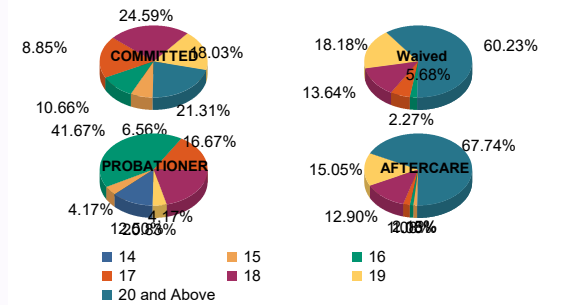
Sentencing County

ATL	5	4.17%	0	0.00%	8	9.30%	0	0.00%	2	9.52%	0	0.00%	1	1.11%	0	0.00%	16	4.89%
BER	3	2.50%	0	0.00%	0	0.00%	0	0.00%	1	4.76%	0	0.00%	5	5.56%	0	0.00%	9	2.75%
BUR	6	5.00%	0	0.00%	2	2.33%	0	0.00%	1	4.76%	0	0.00%	5	5.56%	0	0.00%	14	4.28%
CAM	30	25.00%	0	0.00%	7	8.14%	1	50.00%	1	4.76%	1	33.33%	17	18.89%	3	100.00%	60	18.35%
CUM	3	2.50%	0	0.00%	2	2.33%	0	0.00%	1	4.76%	0	0.00%	2	2.22%	0	0.00%	8	2.45%
ESS	30	25.00%	1	50.00%	4	4.65%	0	0.00%	1	4.76%	0	0.00%	19	21.11%	0	0.00%	55	16.82%
GLO	4	3.33%	0	0.00%	0	0.00%	0	0.00%	0	0.00%	0	0.00%	1	1.11%	0	0.00%	5	1.53%
HUD	7	5.83%	1	50.00%	4	4.65%	0	0.00%	2	9.52%	0	0.00%	2	2.22%	0	0.00%	16	4.89%
HUN	0	0.00%	0	0.00%	0	0.00%	0	0.00%	0	0.00%	0	0.00%	2	2.22%	0	0.00%	2	0.61%
MER	2	1.67%	0	0.00%	4	4.65%	0	0.00%	1	4.76%	0	0.00%	4	4.44%	0	0.00%	11	3.36%
MID	9	7.50%	0	0.00%	25	29.07%	1	50.00%	2	9.52%	0	0.00%	9	10.00%	0	0.00%	46	14.07%
MON	3	2.50%	0	0.00%	4	4.65%	0	0.00%	2	9.52%	0	0.00%	1	1.11%	0	0.00%	10	3.06%
MOR	0	0.00%	0	0.00%	0	0.00%	0	0.00%	0	0.00%	0	0.00%	1	1.11%	0	0.00%	1	0.31%
OCE	1	0.83%	0	0.00%	2	2.33%	0	0.00%	2	9.52%	0	0.00%	3	3.33%	0	0.00%	8	2.45%
PAS	8	6.67%	0	0.00%	16	18.60%	0	0.00%	2	9.52%	2	66.67%	11	12.22%	0	0.00%	39	11.93%
SAL	0	0.00%	0	0.00%	3	3.49%	0	0.00%	0	0.00%	0	0.00%	0	0.00%	0	0.00%	3	0.92%
SUS	0	0.00%	0	0.00%	1	1.16%	0	0.00%	0	0.00%	0	0.00%	0	0.00%	0	0.00%	1	0.31%
UNI	9	7.50%	0	0.00%	4	4.65%	0	0.00%	2	9.52%	0	0.00%	5	5.56%	0	0.00%	20	6.12%
WAR	0	0.00%	0	0.00%	0	0.00%	0	0.00%	1	4.76%	0	0.00%	0	0.00%	0	0.00%	1	0.31%
OTHER	0	0.00%	0	0.00%	0	0.00%	0	0.00%	0	0.00%	0	0.00%	2	2.22%	0	0.00%	2	0.61%
Total	120	100.00%	2	100.00%	86	100.00%	2	100.00%	21	100.00%	3	100.00%	90	100.00%	3	100.00%	327	100.00%

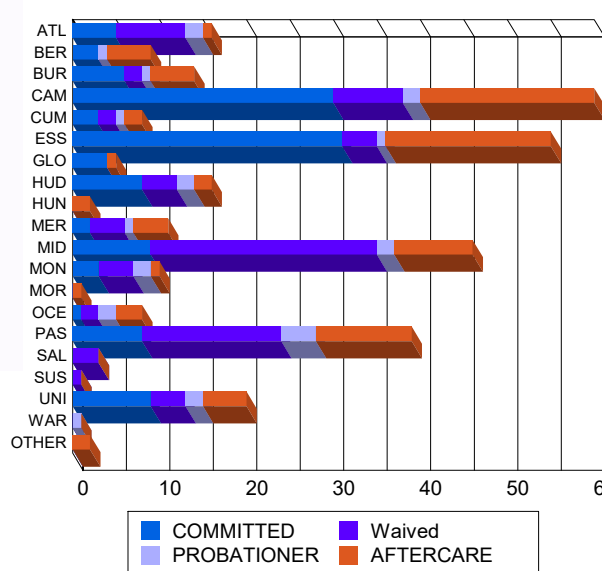
Race/Ethnicity Grouping



Age Grouping



Count of Juveniles By Sentencing County





NJ Office of the Attorney General Juvenile Justice Commission



*Statistics are for Friday, December 8, 2023

Juvenile Demographics and Statistics

Current Grade	COMMITTED		WAIVED		PROBATIONER		Total
	MALE	FEMALE	MALE	FEMALE	MALE	FEMALE	
8	3 (2.50%)	0 0.00%	0 0.00%	0 0.00%	2 (9.52%)	1 (33.33%)	6 (2.56%)
9	17 (14.17%)	0 0.00%	0 0.00%	0 0.00%	5 (23.81%)	0 0.00%	22 (9.40%)
10	18 (15.00%)	1 (50.00%)	9 (10.47%)	0 0.00%	8 (38.10%)	0 0.00%	36 (15.38%)
11	18 (15.00%)	0 0.00%	4 (4.65%)	1 (50.00%)	3 (14.29%)	1 (33.33%)	27 (11.54%)
12	19 (15.83%)	1 (50.00%)	5 (5.81%)	0 0.00%	2 (9.52%)	0 0.00%	27 (11.54%)
HSG	38 (31.67%)	0 0.00%	64 (74.42%)	1 (50.00%)	1 (4.76%)	1 (33.33%)	105 (44.87%)
GED	2 (1.67%)	0 0.00%	2 (2.33%)	0 0.00%	0 0.00%	0 0.00%	4 (1.71%)
Others **	5 (4.17%)	0 0.00%	2 (2.33%)	0 0.00%	0 0.00%	0 0.00%	7 (2.99%)
Total	120 (100.00%)	2 (100.00%)	86 (100.00%)	2 (100.00%)	21 (100.00%)	3 (100.00%)	234 (100.00%)

** Includes Aged Out Juveniles and Pending Records

Special Education Services

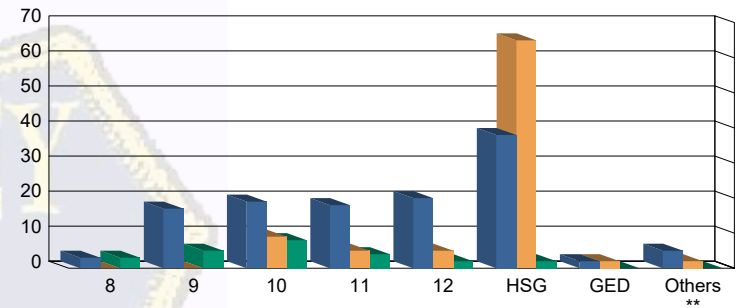
Yes	57 (47.50%)	1 (50.00%)	33 (38.37%)	1 (50.00%)	8 (38.10%)	0 0.00%	100 (42.74%)
No	56 (46.67%)	1 (50.00%)	36 (41.86%)	1 (50.00%)	13 (61.90%)	3 (100.00%)	110 (47.01%)
Pending	7 (5.83%)	0 0.00%	17 (19.77%)	0 0.00%	0 0.00%	0 0.00%	24 (10.26%)
Total	120 (100.00%)	2 (100.00%)	86 (100.00%)	2 (100.00%)	21 (100.00%)	3 (100.00%)	234 (100.00%)

Offense Categories

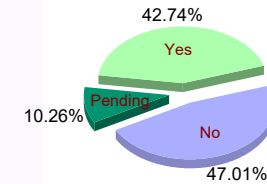
Drug	44 (5.61%)	0 0.00%	9 (3.30%)	0 0.00%	6 (8.11%)	1 (16.67%)	60 (5.20%)
Persons	211 (26.91%)	6 (42.86%)	135 (49.45%)	3 (100.00%)	15 (20.27%)	2 (33.33%)	372 (32.24%)
Property	132 (16.84%)	2 (14.29%)	31 (11.36%)	0 0.00%	11 (14.86%)	1 (16.67%)	177 (15.34%)
Public Order	97 (12.37%)	2 (14.29%)	21 (7.69%)	0 0.00%	6 (8.11%)	0 0.00%	126 (10.92%)
VOP	158 (20.15%)	2 (14.29%)	31 (11.36%)	0 0.00%	17 (22.97%)	2 (33.33%)	210 (18.20%)
Weapons	141 (17.98%)	2 (14.29%)	45 (16.48%)	0 0.00%	18 (24.32%)	0 0.00%	206 (17.85%)
Others Offenses	1 (0.13%)	0 0.00%	1 (0.37%)	0 0.00%	1 (1.35%)	0 0.00%	3 (0.26%)
Total *	784 (100.00%)	14 (100.00%)	273 (100.00%)	3 (100.00%)	74 (100.00%)	6 (100.00%)	1,154 (100.00%)

* Juveniles may have multiple offenses

Current Grade



Special Education



Offense Categories

