



# NJ Office of the Attorney General Juvenile Justice Commission



\*Statistics are for Friday, January 19, 2024

## Juvenile Demographics and Statistics

Race/ Ethnicity	COMMITTED				WAIVED				PROBATIONER				AFTERCARE				Total	
	MALE		FEMALE		MALE		FEMALE		MALE		FEMALE		MALE		FEMALE			
BLACK	83	78.30%	3	75.00%	48	56.47%	2	100.00%	9	52.94%	2	100.00%	70	72.16%	2	66.67%	219	69.30%
HISPANIC	15	14.15%	0	0.00%	26	30.59%	0	0.00%	5	29.41%	0	0.00%	16	16.49%	0	0.00%	62	19.62%
WHITE	8	7.55%	1	25.00%	11	12.94%	0	0.00%	2	11.76%	0	0.00%	9	9.28%	1	33.33%	32	10.13%
Others	0	0.00%	0	0.00%	0	0.00%	0	0.00%	1	5.88%	0	0.00%	2	2.06%	0	0.00%	3	0.95%
Total	106	100.00%	4	100.00%	85	100.00%	2	100.00%	17	100.00%	2	100.00%	97	100.00%	3	100.00%	316	100.00%

## Age

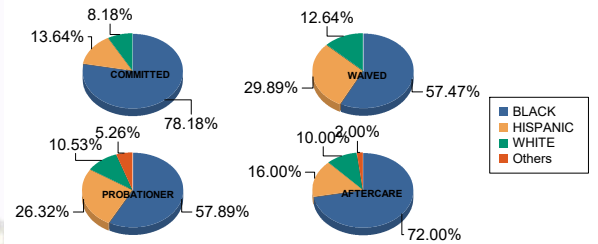
14	0	0.00%	0	0.00%	0	0.00%	0	0.00%	2	11.76%	1	50.00%	0	0.00%	0	0.00%	3	0.95%
15	8	7.55%	1	25.00%	0	0.00%	0	0.00%	1	5.88%	0	0.00%	1	1.03%	0	0.00%	11	3.48%
16	11	10.38%	1	25.00%	0	0.00%	0	0.00%	6	35.29%	1	50.00%	1	1.03%	0	0.00%	20	6.33%
17	16	15.09%	0	0.00%	6	7.06%	0	0.00%	2	11.76%	0	0.00%	9	9.28%	0	0.00%	33	10.44%
18	25	23.58%	2	50.00%	9	10.59%	1	50.00%	4	23.53%	0	0.00%	13	13.40%	0	0.00%	54	17.09%
19	22	20.75%	0	0.00%	19	22.35%	0	0.00%	2	11.76%	0	0.00%	14	14.43%	1	33.33%	58	18.35%
20 and Above	24	22.64%	0	0.00%	51	60.00%	1	50.00%	0	0.00%	0	0.00%	59	60.82%	2	66.67%	137	43.35%
Total	106	100.00%	4	100.00%	85	100.00%	2	100.00%	17	100.00%	2	100.00%	97	100.00%	3	100.00%	316	100.00%

Average Age	18.47	16.75	20.19	19.00	16.65	15.00	21.47	21.00	19.74
-------------	-------	-------	-------	-------	-------	-------	-------	-------	-------

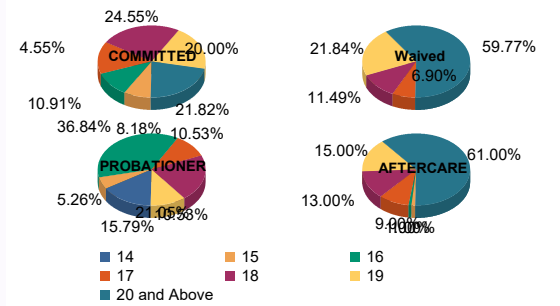
## Sentencing County

ATL	4	3.77%	0	0.00%	7	8.24%	0	0.00%	2	11.76%	0	0.00%	1	1.03%	0	0.00%	14	4.43%
BER	3	2.83%	0	0.00%	0	0.00%	0	0.00%	0	0.00%	1	50.00%	5	5.15%	0	0.00%	9	2.85%
BUR	6	5.66%	0	0.00%	2	2.35%	0	0.00%	0	0.00%	0	0.00%	5	5.15%	0	0.00%	13	4.11%
CAM	26	24.53%	0	0.00%	7	8.24%	1	50.00%	2	11.76%	1	50.00%	18	18.56%	3	100.00%	58	18.35%
CUM	1	0.94%	0	0.00%	1	1.18%	0	0.00%	2	11.76%	0	0.00%	3	3.09%	0	0.00%	7	2.22%
ESS	31	29.25%	2	50.00%	4	4.71%	0	0.00%	1	5.88%	0	0.00%	17	17.53%	0	0.00%	55	17.41%
GLO	3	2.83%	0	0.00%	1	1.18%	0	0.00%	0	0.00%	0	0.00%	1	1.03%	0	0.00%	5	1.58%
HUD	3	2.83%	1	25.00%	4	4.71%	0	0.00%	0	0.00%	0	0.00%	5	5.15%	0	0.00%	13	4.11%
HUN	0	0.00%	0	0.00%	0	0.00%	0	0.00%	0	0.00%	0	0.00%	2	2.06%	0	0.00%	2	0.63%
MER	2	1.89%	0	0.00%	4	4.71%	0	0.00%	1	5.88%	0	0.00%	3	3.09%	0	0.00%	10	3.16%
MID	9	8.49%	0	0.00%	25	29.41%	1	50.00%	2	11.76%	0	0.00%	10	10.31%	0	0.00%	47	14.87%
MON	1	0.94%	0	0.00%	4	4.71%	0	0.00%	1	5.88%	0	0.00%	3	3.09%	0	0.00%	9	2.85%
MOR	0	0.00%	0	0.00%	0	0.00%	0	0.00%	0	0.00%	0	0.00%	1	1.03%	0	0.00%	1	0.32%
OCE	2	1.89%	1	25.00%	2	2.35%	0	0.00%	2	11.76%	0	0.00%	3	3.09%	0	0.00%	10	3.16%
PAS	8	7.55%	0	0.00%	16	18.82%	0	0.00%	0	0.00%	0	0.00%	9	9.28%	0	0.00%	33	10.44%
SAL	1	0.94%	0	0.00%	3	3.53%	0	0.00%	0	0.00%	0	0.00%	0	0.00%	0	0.00%	4	1.27%
SUS	0	0.00%	0	0.00%	1	1.18%	0	0.00%	0	0.00%	0	0.00%	0	0.00%	0	0.00%	1	0.32%
UNI	6	5.66%	0	0.00%	4	4.71%	0	0.00%	2	11.76%	0	0.00%	7	7.22%	0	0.00%	19	6.01%
WAR	0	0.00%	0	0.00%	0	0.00%	0	0.00%	2	11.76%	0	0.00%	0	0.00%	0	0.00%	2	0.63%
OTHER	0	0.00%	0	0.00%	0	0.00%	0	0.00%	0	0.00%	0	0.00%	4	4.12%	0	0.00%	4	1.27%
Total	106	100.00%	4	100.00%	85	100.00%	2	100.00%	17	100.00%	2	100.00%	97	100.00%	3	100.00%	316	100.00%

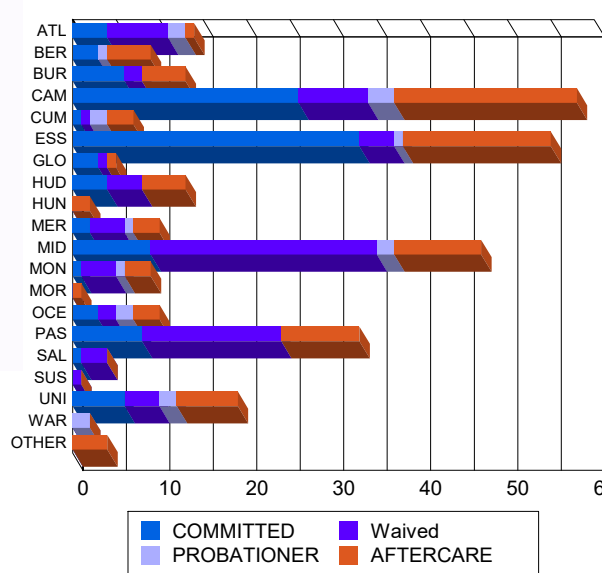
## Race/Ethnicity Grouping



## Age Grouping



## Count of Juveniles By Sentencing County





# NJ Office of the Attorney General Juvenile Justice Commission



\*Statistics are for Friday, January 19, 2024

## Juvenile Demographics and Statistics

Current Grade	COMMITTED		WAIVED		PROBATIONER		Total
	MALE	FEMALE	MALE	FEMALE	MALE	FEMALE	
8	5 (4.72%)	0 0.00%	0 0.00%	0 0.00%	1 (5.88%)	1 (50.00%)	7 (3.24%)
9	12 (11.32%)	0 0.00%	0 0.00%	0 0.00%	3 (17.65%)	0 0.00%	15 (6.94%)
10	17 (16.04%)	1 (25.00%)	6 (7.06%)	0 0.00%	5 (29.41%)	1 (50.00%)	30 (13.89%)
11	14 (13.21%)	1 (25.00%)	6 (7.06%)	1 (50.00%)	3 (17.65%)	0 0.00%	25 (11.57%)
12	20 (18.87%)	1 (25.00%)	8 (9.41%)	0 0.00%	3 (17.65%)	0 0.00%	32 (14.81%)
HSG	33 (31.13%)	0 0.00%	62 (72.94%)	1 (50.00%)	1 (5.88%)	0 0.00%	97 (44.91%)
GED	2 (1.89%)	0 0.00%	2 (2.35%)	0 0.00%	0 0.00%	0 0.00%	4 (1.85%)
Others **	3 (2.83%)	1 (25.00%)	1 (1.18%)	0 0.00%	1 (5.88%)	0 0.00%	6 (2.78%)
<b>Total</b>	<b>106 (100.00%)</b>	<b>4 (100.00%)</b>	<b>85 (100.00%)</b>	<b>2 (100.00%)</b>	<b>17 (100.00%)</b>	<b>2 (100.00%)</b>	<b>216 (100.00%)</b>

\*\* Includes Aged Out Juveniles and Pending Records

## Special Education Services

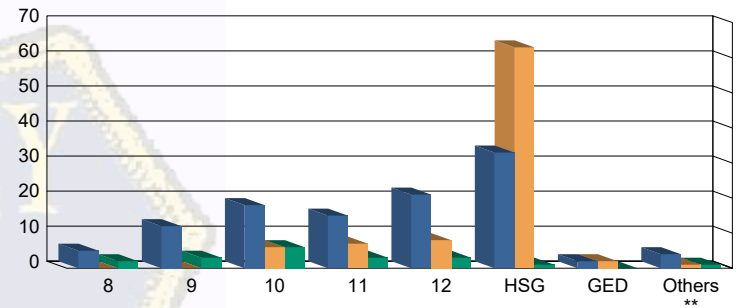
Yes	47 (44.34%)	2 (50.00%)	33 (38.82%)	1 (50.00%)	9 (52.94%)	1 (50.00%)	93 (43.06%)
No	52 (49.06%)	1 (25.00%)	35 (41.18%)	1 (50.00%)	7 (41.18%)	1 (50.00%)	97 (44.91%)
Pending	7 (6.60%)	1 (25.00%)	17 (20.00%)	0 0.00%	1 (5.88%)	0 0.00%	26 (12.04%)
<b>Total</b>	<b>106 (100.00%)</b>	<b>4 (100.00%)</b>	<b>85 (100.00%)</b>	<b>2 (100.00%)</b>	<b>17 (100.00%)</b>	<b>2 (100.00%)</b>	<b>216 (100.00%)</b>

## Offense Categories

Drug	43 (5.58%)	0 0.00%	9 (3.35%)	0 0.00%	6 (10.00%)	1 (14.29%)	59 (5.23%)
Persons	208 (26.98%)	7 (38.89%)	134 (49.81%)	3 (100.00%)	13 (21.67%)	3 (42.86%)	368 (32.62%)
Property	128 (16.60%)	3 (16.67%)	31 (11.52%)	0 0.00%	8 (13.33%)	1 (14.29%)	171 (15.16%)
Public Order	96 (12.45%)	3 (16.67%)	20 (7.43%)	0 0.00%	3 (5.00%)	0 0.00%	122 (10.82%)
VOP	154 (19.97%)	2 (11.11%)	31 (11.52%)	0 0.00%	14 (23.33%)	1 (14.29%)	202 (17.91%)
Weapons	141 (18.29%)	3 (16.67%)	43 (15.99%)	0 0.00%	15 (25.00%)	1 (14.29%)	203 (18.00%)
Others Offenses	1 (0.13%)	0 0.00%	1 (0.37%)	0 0.00%	1 (1.67%)	0 0.00%	3 (0.27%)
<b>Total *</b>	<b>771 (100.00%)</b>	<b>18 (100.00%)</b>	<b>269 (100.00%)</b>	<b>3 (100.00%)</b>	<b>60 (100.00%)</b>	<b>7 (100.00%)</b>	<b>1,128 (100.00%)</b>

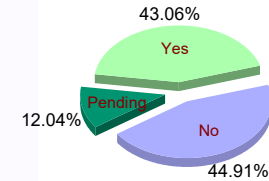
\* Juveniles may have multiple offenses

## Current Grade



■ COMMITTED ■ WAIVED ■ PROBATIONER

## Special Education



## Offense Categories

