



Juvenile Demographics and Statistics

Race/ Ethnicity	COMMITTED		WAIVED		PROBATIONER		AFTERCARE		Total									
	MALE	FEMALE	MALE	FEMALE	MALE	FEMALE	MALE	FEMALE										
BLACK	90	74.38%	6	85.71%	51	57.95%	2	100.00%	13	56.52%	5	100.00%	71	73.96%	2	100.00%	240	69.77%
HISPANIC	20	16.53%	0	0.00%	25	28.41%	0	0.00%	7	30.43%	0	0.00%	14	14.58%	0	0.00%	66	19.19%
WHITE	10	8.26%	1	14.29%	12	13.64%	0	0.00%	2	8.70%	0	0.00%	9	9.38%	0	0.00%	34	9.88%
ASIAN	1	0.83%	0	0.00%	0	0.00%	0	0.00%	0	0.00%	0	0.00%	0	0.00%	0	0.00%	1	0.29%
Others	0	0.00%	0	0.00%	0	0.00%	0	0.00%	1	4.35%	0	0.00%	2	2.08%	0	0.00%	3	0.87%
Total	121	100.00%	7	100.00%	88	100.00%	2	100.00%	23	100.00%	5	100.00%	96	100.00%	2	100.00%	344	100.00%

Age

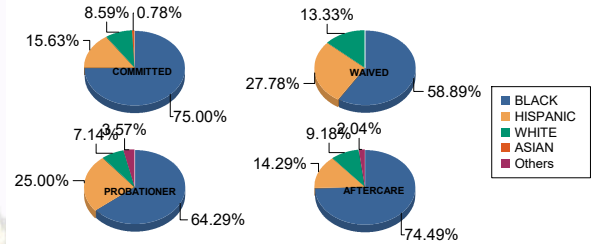
14	0	0.00%	1	14.29%	0	0.00%	0	0.00%	1	4.35%	2	40.00%	0	0.00%	0	0.00%	4	1.16%
15	7	5.79%	1	14.29%	0	0.00%	0	0.00%	4	17.39%	0	0.00%	2	2.08%	0	0.00%	14	4.07%
16	17	14.05%	0	0.00%	0	0.00%	0	0.00%	7	30.43%	2	40.00%	3	3.13%	0	0.00%	29	8.43%
17	19	15.70%	3	42.86%	4	4.55%	0	0.00%	7	30.43%	1	20.00%	6	6.25%	0	0.00%	40	11.63%
18	30	24.79%	1	14.29%	7	7.95%	1	50.00%	3	13.04%	0	0.00%	13	13.54%	0	0.00%	55	15.99%
19	25	20.66%	1	14.29%	21	23.86%	0	0.00%	1	4.35%	0	0.00%	11	11.46%	1	50.00%	60	17.44%
20 and Above	23	19.01%	0	0.00%	56	63.64%	1	50.00%	0	0.00%	0	0.00%	61	63.54%	1	50.00%	142	41.28%
Total	121	100.00%	7	100.00%	88	100.00%	2	100.00%	23	100.00%	5	100.00%	96	100.00%	2	100.00%	344	100.00%

Average Age	18.30	16.71	20.32	19.00	16.43	15.40	21.51	22.00	19.54
-------------	-------	-------	-------	-------	-------	-------	-------	-------	-------

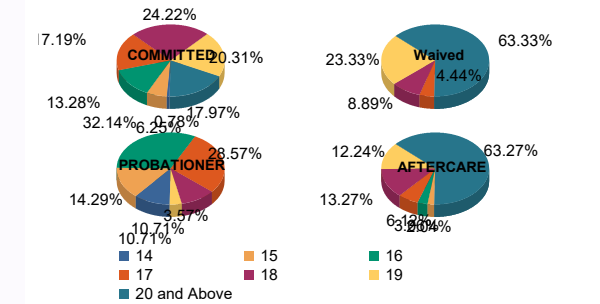
Sentencing County

ATL	6	4.96%	0	0.00%	7	7.95%	0	0.00%	5	21.74%	1	20.00%	2	2.08%	0	0.00%	21	6.10%
BER	5	4.13%	0	0.00%	0	0.00%	0	0.00%	0	0.00%	1	20.00%	5	5.21%	0	0.00%	11	3.20%
BUR	6	4.96%	1	14.29%	2	2.27%	0	0.00%	0	0.00%	1	20.00%	5	5.21%	0	0.00%	15	4.36%
CAM	25	20.66%	0	0.00%	6	6.82%	1	50.00%	4	17.39%	2	40.00%	16	16.67%	2	100.00%	56	16.28%
CAP	1	0.83%	0	0.00%	0	0.00%	0	0.00%	0	0.00%	0	0.00%	0	0.00%	0	0.00%	1	0.29%
CUM	3	2.48%	0	0.00%	2	2.27%	0	0.00%	1	4.35%	0	0.00%	3	3.13%	0	0.00%	9	2.62%
ESS	24	19.83%	3	42.86%	5	5.68%	0	0.00%	2	8.70%	0	0.00%	23	23.96%	0	0.00%	57	16.57%
GLO	3	2.48%	0	0.00%	1	1.14%	0	0.00%	0	0.00%	0	0.00%	0	0.00%	0	0.00%	4	1.16%
HUD	4	3.31%	1	14.29%	4	4.55%	0	0.00%	1	4.35%	0	0.00%	6	6.25%	0	0.00%	16	4.65%
HUN	0	0.00%	0	0.00%	0	0.00%	0	0.00%	0	0.00%	0	0.00%	1	1.04%	0	0.00%	1	0.29%
MER	4	3.31%	0	0.00%	5	5.68%	0	0.00%	0	0.00%	0	0.00%	3	3.13%	0	0.00%	12	3.49%
MID	10	8.26%	0	0.00%	25	28.41%	1	50.00%	0	0.00%	0	0.00%	10	10.42%	0	0.00%	46	13.37%
MON	2	1.65%	0	0.00%	4	4.55%	0	0.00%	2	8.70%	0	0.00%	2	2.08%	0	0.00%	10	2.91%
MOR	1	0.83%	0	0.00%	0	0.00%	0	0.00%	0	0.00%	0	0.00%	0	0.00%	0	0.00%	1	0.29%
OCE	4	3.31%	1	14.29%	2	2.27%	0	0.00%	3	13.04%	0	0.00%	3	3.13%	0	0.00%	13	3.78%
PAS	8	6.61%	0	0.00%	18	20.45%	0	0.00%	3	13.04%	0	0.00%	8	8.33%	0	0.00%	37	10.76%
SAL	1	0.83%	0	0.00%	3	3.41%	0	0.00%	0	0.00%	0	0.00%	0	0.00%	0	0.00%	4	1.16%
SOM	0	0.00%	1	14.29%	0	0.00%	0	0.00%	0	0.00%	0	0.00%	0	0.00%	0	0.00%	1	0.29%
SUS	0	0.00%	0	0.00%	1	1.14%	0	0.00%	0	0.00%	0	0.00%	0	0.00%	0	0.00%	1	0.29%
UNI	14	11.57%	0	0.00%	3	3.41%	0	0.00%	1	4.35%	0	0.00%	5	5.21%	0	0.00%	23	6.69%
WAR	0	0.00%	0	0.00%	0	0.00%	0	0.00%	1	4.35%	0	0.00%	0	0.00%	0	0.00%	1	0.29%
OTHER	0	0.00%	0	0.00%	0	0.00%	0	0.00%	0	0.00%	0	0.00%	4	4.17%	0	0.00%	4	1.16%
Total	121	100.00%	7	100.00%	88	100.00%	2	100.00%	23	100.00%	5	100.00%	96	100.00%	2	100.00%	344	100.00%

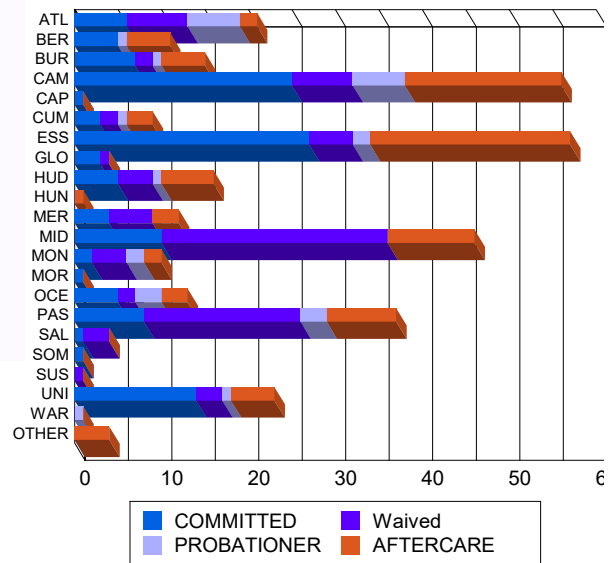
Race/Ethnicity Grouping



Age Grouping



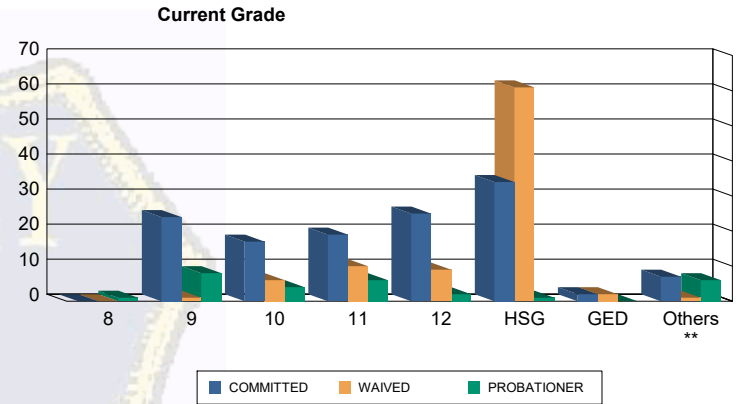
Count of Juveniles By Sentencing County





Juvenile Demographics and Statistics

Current Grade	COMMITTED		WAIVED		PROBATIONER		Total
	MALE	FEMALE	MALE	FEMALE	MALE	FEMALE	
8	0 (0.00%)	0 (0.00%)	0 (0.00%)	0 (0.00%)	0 (0.00%)	1 (20.00%)	1 (0.41%)
9	22 (18.18%)	2 (28.57%)	1 (1.14%)	0 (0.00%)	8 (34.78%)	0 (0.00%)	33 (13.41%)
10	16 (13.22%)	1 (14.29%)	6 (6.82%)	0 (0.00%)	2 (8.70%)	2 (40.00%)	27 (10.98%)
11	17 (14.05%)	2 (28.57%)	9 (10.23%)	1 (50.00%)	6 (26.09%)	0 (0.00%)	35 (14.23%)
12	23 (19.01%)	2 (28.57%)	9 (10.23%)	0 (0.00%)	2 (8.70%)	0 (0.00%)	36 (14.63%)
HSG	34 (28.10%)	0 (0.00%)	60 (68.18%)	1 (50.00%)	1 (4.35%)	0 (0.00%)	96 (39.02%)
GED	2 (1.65%)	0 (0.00%)	2 (2.27%)	0 (0.00%)	0 (0.00%)	0 (0.00%)	4 (1.63%)
Others **	7 (5.79%)	0 (0.00%)	1 (1.14%)	0 (0.00%)	4 (17.39%)	2 (40.00%)	14 (5.69%)
Total	121 (100.00%)	7 (100.00%)	88 (100.00%)	2 (100.00%)	23 (100.00%)	5 (100.00%)	246 (100.00%)

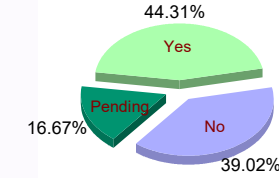


** Includes Aged Out Juveniles and Pending Records

Special Education Services

Yes	55 (45.45%)	6 (85.71%)	34 (38.64%)	1 (50.00%)	11 (47.83%)	2 (40.00%)	109 (44.31%)
No	52 (42.98%)	1 (14.29%)	33 (37.50%)	1 (50.00%)	8 (34.78%)	1 (20.00%)	96 (39.02%)
Pending	14 (11.57%)	0 (0.00%)	21 (23.86%)	0 (0.00%)	4 (17.39%)	2 (40.00%)	41 (16.67%)
Total	121 (100.00%)	7 (100.00%)	88 (100.00%)	2 (100.00%)	23 (100.00%)	5 (100.00%)	246 (100.00%)

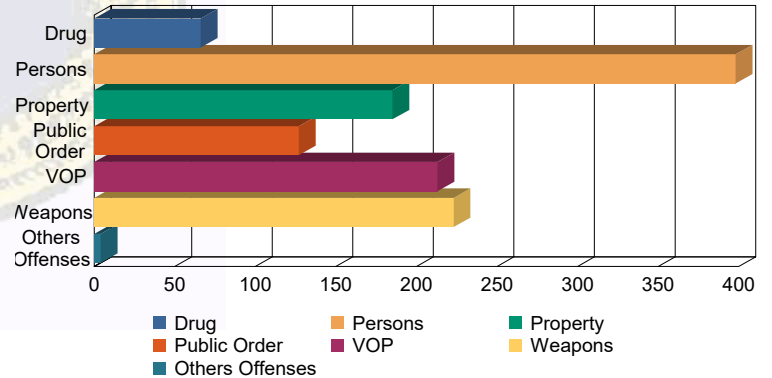
Special Education



Offense Categories

Drug	50 (6.20%)	0 (0.00%)	10 (3.50%)	0 (0.00%)	6 (7.59%)	0 (0.00%)	66 (5.43%)
Persons	219 (27.17%)	9 (34.62%)	144 (50.35%)	3 (100.00%)	21 (26.58%)	2 (12.50%)	398 (32.73%)
Property	132 (16.38%)	4 (15.38%)	32 (11.19%)	0 (0.00%)	14 (17.72%)	3 (18.75%)	185 (15.21%)
Public Order	93 (11.54%)	5 (19.23%)	21 (7.34%)	0 (0.00%)	5 (6.33%)	3 (18.75%)	127 (10.44%)
VOP	157 (19.48%)	4 (15.38%)	32 (11.19%)	0 (0.00%)	14 (17.72%)	6 (37.50%)	213 (17.52%)
Weapons	153 (18.98%)	4 (15.38%)	46 (16.08%)	0 (0.00%)	18 (22.78%)	2 (12.50%)	223 (18.34%)
Others Offenses	2 (0.25%)	0 (0.00%)	1 (0.35%)	0 (0.00%)	1 (1.27%)	0 (0.00%)	4 (0.33%)
Total *	806 (100.00%)	26 (100.00%)	286 (100.00%)	3 (100.00%)	79 (100.00%)	16 (100.00%)	1,216 (100.00%)

Offense Categories



* Juveniles may have multiple offenses