



*State of New Jersey*

OFFICE OF THE ATTORNEY GENERAL  
DEPARTMENT OF LAW AND PUBLIC SAFETY  
DIVISION OF NEW JERSEY RACING COMMISSION  
PO Box 088  
TRENTON, NJ 08625-0088

JON S. CORZINE  
Governor

ANNE MILGRAM  
*Attorney General*

JOHN J. TUCKER  
*Chairman*

June 3, 2008

The Honorable Jon S. Corzine  
Governor of the State of New Jersey  
State House  
PO Box 001  
Trenton, NJ 08625

JAMES G. AARON  
ANTHONY T. ABBATIELLO  
ANTHONY R. CAPUTO  
PETER J. COFRANCESCO, III  
NOEL LOVE GROSS  
FRANCIS X. KEEGAN, JR.  
EDWARD R. MCGLYNN  
DANIEL A. MONACO  
*Commissioners*

FRANCESCO ZANZUCCKI  
*Executive Director*

Dear Governor Corzine ,

Pursuant to the provisions of Chapter 17 of the Laws of 1940, as amended and supplemented, the Division of the New Jersey Racing Commission presents herewith its Sixty-ninth Annual Report, covering the period from January 1, 2007 to December 31, 2007.

Respectfully yours,

John J. Tucker, Chairman  
James G. Aaron, , Commissioner  
Anthony T. Abbatiello, Commissioner  
Anthony R. Caputo, Commissioner  
Peter J. Cofrancesco III, Commissioner  
Noel Love Gross, Commissioner  
Francis X. Keegan, Jr., Commissioner  
Edward R. McGlynn, Commissioner  
Daniel A. Monaco, Commissioner

- c Denelle Waynick, Chief of Staff, Office of the Attorney General
- Robert Lougy, Special Assistant, Office of the Attorney General
- David Wald, Director of Communications
- Frank Zanzuccki, Executive Director





*State of New Jersey*

OFFICE OF THE ATTORNEY GENERAL  
DEPARTMENT OF LAW AND PUBLIC SAFETY  
DIVISION OF NEW JERSEY RACING COMMISSION  
PO Box 088  
TRENTON, NJ 08625-0088

ANNE MILGRAM  
*Attorney General*

JOHN J. TUCKER  
*Chairman*

JON S. CORZINE  
*Governor*

June 3, 2008

Anne Milgram, Attorney General  
State of New Jersey  
Department of Law & Public Safety  
PO Box 080  
Trenton, NJ 08625

JAMES G. AARON  
ANTHONY T. ABBATIello  
ANTHONY R. CAPUTO  
PETER J. COFRANCESCO, III  
NOEL LOVE GROSS  
FRANCIS X. KEEGAN, JR.  
EDWARD R. MCGLYNN  
DANIEL A. MONACO  
*Commissioners*

FRANCESCO ZANZUCCI  
*Executive Director*

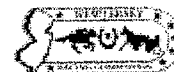
Dear Attorney General Milgram:

Pursuant to the provisions of Chapter 17 of the Laws of 1940, as amended and supplemented, the Division of the New Jersey Racing Commission presents herewith its Sixty-ninth Annual Report, covering the period from January 1, 2007 to December 31, 2007.

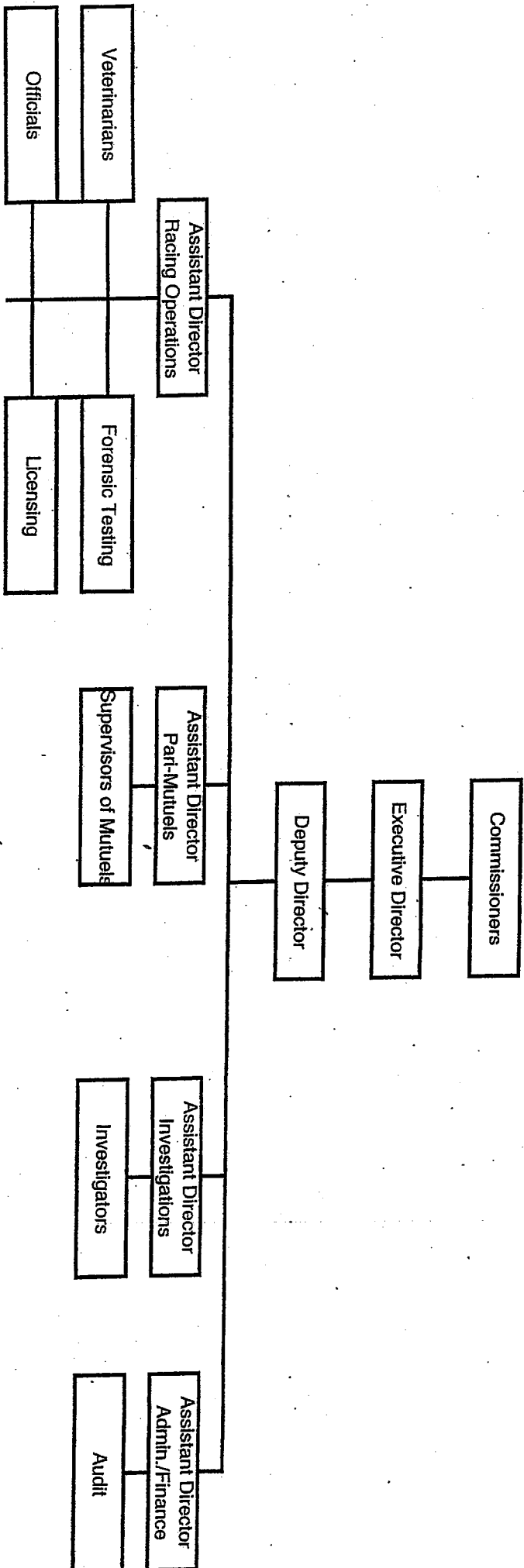
Respectfully yours,

John J. Tucker, Chairman  
James G. Aaron, Commissioner  
Anthony T. Abbatiello, Commissioner  
Anthony R. Caputo, Commissioner  
Peter J. Cofrancesco III, Commissioner  
Noel Love Gross, Commissioner  
Francis X. Keegan, Jr., Commissioner  
Edward R. McGlynn, Commissioner  
Daniel A. Monaco, Commissioner

- c Denelle Waynick, Chief of Staff, Office of the Attorney General
- Robert Lougy, Special Assistant, Office of the Attorney General
- David Wald, Director of Communications
- Frank Zanzuccki, Executive Director



# NEW JERSEY RACING COMMISSION ORGANIZATIONAL STRUCTURE



## Members of The Racing Commission

John J. Tucker, Morris Township  
Chairman, 1999 - present

Mr. Tucker was elected Chairman in January 2002, three years after his appointment to the Commission. Now retired, he had a long and distinguished career in the consumer products industry, most recently having served in senior management positions at Philip Morris Co., Inc. and Kraft, Inc. from 1985-1994. He received a BA in Business Administration from Upsala College and a MS in Business from Northwestern University. Mr. Tucker continues to be active in many professional and civic organizations and is a member of the Advisory Council for Human Resource Management for the Conference Board. Prior to his appointment to the Commission, Mr. Tucker owned and bred thoroughbred horses for over 15 years.

James G. Aaron  
Appointed 2006

Mr. Aaron is a distinguished attorney practicing presently with the firm Ansell, Zaro, Grimm and Aaron, whose offices are located in Ocean Township, New Jersey. Mr. Aaron graduated Long Branch High School in 1962, earned a B.A. degree from Dickinson College in Carlisle, Pa. in 1966, and a J. D. Degree from New York University School of Law in 1969. Mr. Aaron has founded, incorporated and is a member of the Board of Directors of the Monmouth Community Bank. Mr. Aaron is the Vice-President of ERBA Company, Inc. which is a Real Estate and Equity Investment Firm. Mr. Aaron has vast experience in the horse racing and breeding industry having owned standardbred horses from 1983 - 2006. Mr. Aaron was part owner of "San Gimignano" who was the New Jersey Sire Stakes three year old pacer of the year in 2001. Mr. Aaron and his wife Madlyn, have been married 37 years and reside in West Long Branch, New Jersey.

Anthony T. Abbatiello  
Appointed 2006

Anthony T. Abbatiello's love for horses has resulted in 53 years dedicated to the horse racing industry. For 28 years, Mr. Abbatiello served the Standardbred Breeders and Owners Association of New Jersey, both as Co-Founder and as President. Mr. Abbatiello's previous titles included, Chairman of the Board for the United States Trotting Association, Director of the Standardbred Owner's Association of New York, Chairman of the New Jersey Sire Stakes Board of Directors, Trustee Chairman of the Board of American Horse Council in Washington D.C. and Trustee of the Trotting Horse Museum in Goshen, New York.

On July 2, 1995, Mr. Abbatiello was inducted into the Living Hall of Fame in Goshen, New York with his brother Carmine, a 1985 inductee, his induction resulted in the first brother tandem in the Hall of Fame. A decorated war veteran, Mr. Abbatiello served in the Korean War rising to the rank of Captain. Mr. Abbatiello demonstrated courage under fire, receiving numerous commendations including the Combat Infantry Badge, Silver Star, The Bronze Star with Valor, two Purple Hearts, the Presidential Unit Citation, Korean Campaign Ribbon with four Battle Stars and the Korean Service Medal.

Anthony R. Caputo, M.D.  
Commissioner since 2005

Dr. Anthony R. Caputo was born in Newark and raised in Belleville where he attended public school. For high school he enrolled at Seton Hall Prep where he excelled as their Quarterback for three years. After high school, he received his B.S. degree from St. Bonaventure University. Years later he was granted an Honorary Doctorate from St Bonaventure University.

Dr. Caputo earned his Medical Degree in 1969 from University of Bologna. His internship and ophthalmology training was completed at the New Jersey Medical School. In 1974, he was offered a Heed Fellowship at the Wills Eye Hospital in Philadelphia for pediatric ophthalmology. Upon returning to Newark, he was appointed Director of Fight for Sight Children's Eye Care Center and became the first pediatric ophthalmologist to practice in New Jersey.

Peter J. Cofrancesco III, Sparta  
Commissioner since 2001

Mr. Cofrancesco serves as Executive Officer of the Grinnell Group of Companies. Grinnell is family owned and operated with interests in manufacturing of construction materials, transportation services, as well as commercial and residential real estate development. The company was named the 2003 New Jersey Family Business of the Year, an award that recognizes the significant contributions to the economy and community made by New Jersey family businesses. He attended Delaware Valley College, concentrating in Business Management and also received an Honorary Doctorate in Humane Letters from Centenary College in 2003. He is extremely active in many community and professional organizations including directorship of college and hospital foundations, the NJ State Fair and the Interlocking Concrete Pavement Institute. Mr. Cofrancesco is a leading owner and breeder of American Quarter Horses and currently serves as a Director of the American Quarter Horse Association. He and his family have owned an unprecedented 24 AQHA World Champions, and have received the prestigious Leading Owner Award five times.

Francis X. Keegan, Jr.  
Appointed 2006

Mr. Keegan, a lifelong horseman, was appointed to the Commission in 2006. He is a past President of the New Jersey Thoroughbred Breeders' Association, a past President of the New Jersey Thoroughbred Horsemen's Association and was a member of many horsemen organizations, including the Thoroughbred Club of America, the Green Mountain Horse Association, the National Hunt Association, and a patron of the Monmouth County Hunt. He has bred, owned and raced horses in New Jersey since 1963, and has also been a successful consignor at numerous thoroughbred auction sales including Saratoga and Keeneland. He is a graduate of Seton Hall University and attended Fordham Law School and served as an infantry officer after college in the United States Army. He is a Wealth Management Advisor and First Vice President of Investments with UBS Financial Services, Inc. and in March 2006 celebrated 40 years with the firm. Over the years he has served on numerous bank boards, including Carteret S & L Bank of Commerce in Newark and Monmouth Community Bank.

Noel Love Gross, Saddle River  
Former Chair and Commissioner since 1994

Mrs. Gross served as chair of the New Jersey Racing Commission from 1994 to 2001. She received her college education at Sarah Lawrence College in Bronxville, New York. In the private sector, she is President and Chief Administrative Officer of the Hudson Landing Corporation. In the public sector, Mrs. Gross has had a notable career highlighted by her appointment by President Reagan to serve as United States Alternate Representative to the 41<sup>st</sup> and 43<sup>rd</sup> United Nations General Assembly. She was asked to head the US Delegation to the UN Economic and Social Council Organizational Session, and was named head of the US delegation to the Special Session of the UN Development Program. She has also held various positions in the Republican National Committee and, locally, is a member of the Board of Trustees of 70001 Limited Development Foundation. Mrs. Gross is an owner/operator of two horse farms and her horses have won many competitions including multiple Grand Championships by Westfields and first-year Green Hunter of the Year National Championship by Ever So Dark.

Edward R. McGlynn, Point Pleasant Beach  
Commissioner since 1996

Mr. McGlynn received a B.A. degree from McKendree College in Lebanon Ill. and a J.D. from Seton Hall University School of Law. His career encompassed both the public and private sector. He served as Deputy and Chief of Staff to Governor Thomas H. Kean, and Executive and Special Assistant to Attorney General Irwin I. Kimmelman. Currently he is President of ERM Government Affairs, Inc., Senior Vice President of Government Affairs for the Alman Group, LLC, and is Of Counsel to Stone Mandia, Counsellors at Law. His community and professional affiliations are many and include medical and educational groups, and State Commissions.

Daniel A. Monaco, Woodbury  
Commissioner since 1985

Dr. Monaco earned a B.S. in chemistry from Mt. Saint Mary's College and a DDS from Temple Dental School. He served in the Army as captain in the U.S. Army Dental Corps. In 1957, he went into the general practice of dentistry and retired from practice in 1997. His professional and community affiliations include several dental associations and was a member of the dental staff of Underwood Memorial Hospital having served as chief of its Department of Dentistry. In public service, he served on several environmental commissions in West Deptford Township. Dr. Monaco was a co-founder and general partner of the Gloucester County Cable TV Co. He also was an incorporator and director of the Lenape State Bank and the Bank of Gloucester County having retired from banking in 2001. Prior to joining the Commission, Dr. Monaco was an owner and breeder of both thoroughbred and standardbred race horses for over 25 years.

Frank Zanzuccki, Wall Township  
Executive Director since 1992

Mr. Zanzuccki received a B.S. in Accounting from St. Francis College, Loretto, Pa. He was the Chief Accountant for United Mine Workers of America from 1975-1978. He started his career with the New Jersey Racing Commission in 1978 and served in various positions and was appointed Executive Director in 1992. Mr. Zanzuccki was awarded the prestigious Len Foote Award in 1998 in recognition of outstanding contributions to the horse racing industry. He is also the first non-commissioner to be elected to the Association of Racing Commissioners International Board of Directors. In addition to this honor, Mr. Zanzuccki was subsequently elected as an officer of this international organization and served as its chairman from April 2004 through April 2005.

## **STRUCTURE & FUNCTION**

### **MISSION STATEMENT**

The New Jersey Racing Commission ("NJRC"), a Division within the Department of Law and Public Safety, is responsible for regulating the horse race industry in the State through vigilant oversight of all racing related activities to ensure the integrity of the sport and the safety of its participant.

### **Commission Structure**

Horse racing in New Jersey is regulated by nine Commissioners who, by law, are appointed by the Governor, with the advice and consent of the Senate. They set policy and rule on all matters affecting racing such as issuing permits to conduct horse racing meets, approving expenditures and adjudicating licensing matters. They also consider the issuance of licenses for off-track wagering sites, are responsible for the oversight and regulation of account wagering as well as internet betting in New Jersey. This year, nine individuals served as Commissioners: John J. Tucker, Chair, James G. Aaron, Anthony T. Abbatiello, Anthony R. Caputo, Peter J. Cofrancesco, III, Francis X. Keegan, Jr., Noel Love Gross, Edward R. McGlynn, and Daniel A. Monaco.

The NJRC employs staff to effect policy, including an Executive Director who is responsible for overseeing the day-to-day operations of the Commission in accordance with accepted business and financial practices. Francesco Zanzuccki serves as the Executive Director.

NJRC has a staff of 73 full-time employees who conduct the daily functions of regulating horse racing. It also maintains a pool of 34 part-time workers to supplement staff as needed. Activities are divided into four functional areas: Administrative/Financial, Racing Operations, Pari-mutuels and Investigations.

### **Administrative/Financial**

Much of the general administrative functions are performed by the Department of Law & Public Safety's Consolidated Administrative and Support Services unit specifically organized to streamline the personnel, budget and logistics functions of several State agencies.

Commission personnel perform administrative functions specific to racing matters including rule and regulation composition, staffing and scheduling, communications with and oversight of industry-related organizations, adjudication support, and report writing. Commission staff maintains a horse racing financial system that records and calculates all receipts and payments of funds from pari-mutuel wagering. In addition, it monitors the finances of certain industry organizations as required or requested.



### **Racing Operations**

All matters related to the regulation of the actual "running of the races" are the responsibility of the employees in this functional area.

Each individual and entity associated with horse racing must be licensed by Commission personnel. All participants must also be fingerprinted. A state-of-the-art computer system networks the Trenton office with all satellite racetrack locations. The Commission has a very successful mail-out program and participates in the Association of Racing Commissioners International multi-jurisdictional licensing program for owners.

The Commission employs racing officials who are present at each racetrack to monitor the running of every race in New Jersey. They issue penalties for rule infractions and rule on matters affecting the integrity of racing, including licensing concerns.

Veterinarians are also present at every live race meet to ensure the safety of the animals and to verify that each horse is fit to race.

Race horses are tested for the presence of illegal drugs after each race. These randomly selected samples undergo a complete chemical analysis at Commission-sponsored State Police Forensic Laboratory at the Meadowlands Racetrack.

### **Pari-Mutuels**

Every wager made on every live and simulcast race is recorded and checked for accuracy and compliance with Commission rules and regulations. Commission staff calculate financial information from these wagers for proper distribution of funds. Racing Commission staff oversee all aspects of pari-mutuel operations to ensure they are conducted with integrity.

### **Investigations**

An in-house investigative unit provides the Commission with the ability to oversee the integrity of racing by conducting case studies into alleged rule violations, and participates in the litigation process to punish offenders.

## **HIGHLIGHTS AND 2007 KEY ISSUES**

Once again 2007 saw the Commission being very active in the oversight and expansion of the Racing Industry. The Atlantic City computer hub, which serviced the Casino Pari-Mutuel wagering activity, merged into the Autotote Data Center in Mount Laurel and were functioning properly and within the Commission's guidelines. The state of the art data center is operated by Scientific Games, Inc. and now processes all wagers made at New Jersey Racetracks and Casino Race books in Atlantic City, as well as the two operational OTW facilities. In addition, the Data Center is now a regional hub servicing pari-mutuel wagering from out-of states locations and is proving to be a cost effective way of doing business. The Racing Commission maintains a staff at this hub during all hours when wagers are placed to insure that such activities are conducted properly.

Racing Commission staff monitors all aspects of pari-mutuel wagering to ensure compliance with rules and regulations governing betting. On-site supervisors of mutuels check for accuracy of system configuration relative to wagering options, proper transmission of wagers and television signals, and accuracy of pay-outs.

Recording and reporting of all wagers occurs there and are reviewed by Commission staff. These reports are subsequently forwarded to the Commission audit section for further compilation to effectuate the distribution of funds from wagers pursuant to law.

As a result of the Commission's receipt of New Jersey's first OTW application in December 2005, filed by the New Jersey Sports & Exposition Authority and the owners' of Atlantic City Racecourse, the Commission prepared for the staffing and application of already existing regulations which were tailored to this new industry. The Commission has conducted hearings as per statute in 2006, in Vineland, Toms River and Woodbridge Townships.

The first off-track wagering license, for a facility in Vineland City was issued on March 30, 2007. Woodbridge Township is New Jersey's second off-track wagering facility to go online and did so on October 4, 2007. Toms River was issued a license by the Commission in 2007 which license issuance is presently under construction. To date \$30,892,421 in pari-mutuel wagering has occurred at both facilities in 2007.

Several rules are being promulgated by the Commission to insure the safety of horses and jockeys/drivers who compete in New Jersey.

The Commission is looking forward to conducting out-of- state competition equine drug testing, which will enable the Commission to test horses not racing, for EPO and other blood doping performance enhancing agents. These agents can have a long term detrimental effect on horses and compromise the safety of all participants in races in New Jersey. The TCO2 Blood Gas Program has also been expanded to thoroughbred racing in 2007, and the Commission feels these forward thinking rules with stringent penalties will deter the illegal administration of these agents and enhance the integrity of the sport.

The Commission will also mandate two equipment rules which will increase a safer atmosphere for the conduct of racing. Safety reins will be required to be used in both breeds and will dramatically reduce if not eliminate the unexpected snapping of the lines which control a horse's direction during a race or training session. These reins have a double hook up to the horse's mouth bit, one of which is nylon used as secondary backup in case the primary leather rein breaks, allowing the jockey/driver to continue to control his horse in a safe manner.

The Racing Commission has advertised and amended N.J.A.C. 13:70-19.15 ("Shodding of Horses") to address "Toe Grab" horse shoes. The objective of the amendment is to mandate a particular type of horseshoe called a "Toe Grab" not to exceed four millimeters (0.15748 inches) worn on the front feet of thoroughbred horses while flat racing on any track surface or condition.

Studies have shown and have been accepted by the Jockey Club, the Grayson-Jockey Club Research Foundation and the Kentucky Horseshoeing School as well as the A.R.C.I which directly link the wearing of this type of horseshoe in excess of four millimeters to musculoskeletal injury and fatality in thoroughbred race horses. The A.R.C.I. has drafted a model rule which is being adopted by several major racing states and, when adopted in New Jersey, will provide a safer environment for both horse and jockey.

After a further review of some of the key issues that affected the Horse racing industry in 2007, the most significant is the enhanced revenues dedicated to the sport from slot machine or video lottery terminal (VLT) proceeds in other states. Directly affecting New Jersey are West Virginia, Delaware, Pennsylvania, and New York, which already have these systems operational at racetracks (i.e., racinos). Revenues from these systems increase purse money in these jurisdictions and enable them to attract better quality horses resulting in a superior product. The New Jersey casino industry has dedicated \$86 million to the New Jersey horse racing industry, to be used for horse race purses and the balance of approximately \$22 million was used through 2007. This money is essential in keeping the quality of racing in this state competitive with surrounding jurisdictions. This problem not only affects the racing industry but the horse and farm industry as well as the economic and job impact on the state will be felt by all if this matter is not addressed long term and money spent in a more forward direction.

Most of the casino subsidy money went toward purses, with no money spent for improving racing facilities and little for breeding incentives. To illustrate the decline of the standardbred portion of the industry alone, 20 years ago there were 100 standardbred champion stallions standing stud in New Jersey. Today there are about 15.

In a money driven sport like horse racing, people bring their product where incentives are greater and due to the inception of racino's in surrounding states such as Pennsylvania where over \$20 million in breeders awards are available due to the added money, New Jersey offers \$11 million. The total economic impact of the equine industry in New Jersey is \$1.1 billion annually. The total includes \$278.2 million for racing related operations, excluding racetracks; \$262.2 million for non-racing operations; \$117.8 million for equine owners without operations; and \$502.3 million for New Jersey racetracks.

The equine industry in New Jersey employs almost 13,000 people, with 3,820 jobs generated by racetracks and 9,150 jobs generated by equine operations other than racetracks. There are 42,500 horses in the state, with 12,500 of them in racing related activities. Among these, 8,200 were racing related standardbreds, and 4,300 were racing related thoroughbreds. There are 7,200 equine operations in New Jersey with a total of \$4 billion of equine related assets. Monmouth County is home to 960 of these operations with a total of 27,300 equine related acres. In the state overall, horses have a total worth of \$582 million, land and buildings (excluding racetracks) associated with the industry have a worth of \$2.9 billion and racetracks assets are valued at \$476 million. In New Jersey, a total of 176,000 acres are used for equine operations which is the size of four New Jersey counties. Of that acreage 96,000 acres are directly related to equine activities while 78,000 acres are devoted to pasture and hay production. This horse related acreage represents one-fifth of the states 790,000 acres of agriculture.

The New Jersey horse industry is a significant ingredient to the states economy. Unless the funding of purses, and the funding of breeding programs is addressed in a permanent basis, New Jersey will continue to lose revenues and horses to the surrounding states that have them.

The highlight of 2007 was the running of the Breeders' Cup World Championships of Thoroughbred Racing conducted at Monmouth Park on October 26 and 27, 2007. The Breeders Cup Association was formed by thoroughbred breeders, most from Kentucky but have a worldwide membership board that is headquartered in Lexington, Kentucky. They were formed to promote the worldwide breeding of thoroughbred race horses. The Association charges fees to register stallions whose foals or offspring become eligible to race in this event. The money from these fees go to create a huge purse structure and the Association each year chooses a location (racetrack) to conduct this event. The Breeders' Cup at Monmouth Park in 2007 lived up to the expectations of everyone with \$23 million on the line in 11 races featuring the greatest thoroughbred racehorses in the world.

Just as severe weather played havoc with many facets of the 2007 Breeders' Cup, the blustery, sloppy conditions hit the bottom line of handle figures at Monmouth Park during the first ever two day world championships.

Sub-par track conditions resulting from an estimated two inches of rain over four days, was blamed for a double drop in all sources handle from last year's wagering set at Churchill Downs, based on a Saturday to Saturday comparison. Bettors feeding into closed pools wagered \$111,903,685 on the October 27<sup>th</sup> (Saturday) card at Monmouth Park, according to preliminary data, initially yielding a 20.3 percent decline from the \$140,332,198 recorded at Churchill Downs in 2006. Factoring in an estimated \$5 million from separate pools in countries such as Hong Kong, Australia and France, wagering totals that aren't validated until a few days after the Breeders' Cup the overall decline ranges from 16 percent to 17 percent. That's better but still a significant decline.

"The reality is, if we had this weather the four days, our numbers would have been significantly higher," said Greg Avioli, Breeders' Cup President and Chief Executive Officer, addressing the October 28 media breakfast on a crisp sunny morning. "Obviously we were hoping for more, because we had good growth through the years." Ken Kirchner, a Breeders' Cup simulcasting consultant, said the treacherous looking tracks made some bettors less than confident. "I talked to

a number of players that simply said they were uncertain because of the severe track conditions, and so they pulled their bets back," he said. "And that's not unusual at every track in the country, where you see players pull their bets back on off conditions.

But the weather didn't stop on-track patrons from getting bets down. A single day record for on-track handle at any New Jersey track was established on the opening day Breeders' Cup card (October 26, 2007) when \$5,038,975 was wagered. That record didn't last long, as \$12,726,622 was wagered on-track for the October 27 card. The October 27 on-track total wagered by 41,781 patrons at Monmouth Park was 30.3 percent lower than the 18,259,971 record bet by the crowd of 75,132 at Churchill Downs in 2006 but per capita spending was higher (\$304 this year; \$243 last year).

"Over four days, we put 80,000 people through these gates. We fed them. We kept them as dry as we could. And we gave them great races," said Dennis Dowd, Senior Vice-president of Racing for the New Jersey Sports and Exposition Authority. Dowd told those gathered at the media breakfast that during the four days, he only had one complaint about a mutuel line ("what racetrack manger can say that? He asked), and only one complaint about food service. "We threw an open bar for an hour there, and it made people very happy," he said with a chuckle.

Having a bad weather Breeders' Cup resurrects opinions about holding the event only in fair weather havens. But consulting event manager Damon Thayer said that would eliminate prime locations such as New York tracks and Churchill Downs among others. Thayer also noted warm weather sites are not exempt from trying conditions. The 1999 Breeders' Cup at Gulfstream Park was held under constant hurricane threats and the 2003 Breeders' Cup at Oak Tree at Santa Anita Park was hampered by 100 degree heat and nearby wildfires which spread ash on the stands like a light snow fall. This (bad) weather is not germane only to New Jersey," he said. "Earlier this week, we had this same weather at Keeneland."

Preliminary wagering totals weren't released by Breeders' Cup officials until about three hours after Curlin won the Breeders' Cup Classic - Powered by Dodge (Gr. 1) but Kirchner said that delay is not unusual. "It's part of our verification process of the Pick-6," he said, noting the scandal of that exotic wager during the 2002 Breeders' Cup at Arlington Park. "We've done it ever since then." Kirchner said officials contact each of the outlets where winning tickets are sold. This year there were six correct plays valued at \$321,813 each. "We have them verify it was a live ticket and everything was proper with the Pick 6 winning tickets," he said. "We had to chase down six different outlets. That takes a little bit of time." The first race chart issued following the Classic showed a different total for a winning Pick 6 ticket, but later corrected to show a true pay-out. "That shouldn't have happened," Kirchner said. "I am not sure how the number got out. We will have to talk to Equibase about that, because that was an error. What was paid out was absolutely correct."

Common pool wagering on the eleven Breeders' Cup races contested over two days total \$125,287,556, while the figure for all 21 races was \$142,700,099. Off-track handle on the October 26 card was \$25,331,696, while the announced crowd of 27,803 bet \$5,038,975., producing an all sources gross of \$30,370,671. "We were pleased with Friday's totals, but we might have been conservative with our early estimates," Kirchner said. "We were pleasantly surprised, but we had no basis of comparison."

The attendance figure of 41,781 was the lowest recorded since 27,246 attended the 1995 Breeders' Cup event at Belmont Park, and fell short of the all time record of 80,452 at Churchill Downs in 1998.

## NEW JERSEY RACETRACKS

The Meadowlands Racetrack  
50 State Route 120  
East Rutherford, New Jersey 07073  
201-The-Big M Meadowlandsracetrack.com

The Meadowlands and Monmouth Park are operated by:  
New Jersey Sports and Exposition Authority

Carl J. Goldberg	Chairman
Joseph Buckelew	Vice Chairman
Joseph M. Forgione	Treasurer
Jerold L. Zaro, Esq.	Secretary
Raymond H. Bateman	Member
Geroge A. Castro II	Member
Richard Dressel	Member
Armando Fontoura	Member
Reverend Dr. David Jefferson	Member
Pamela T. Miller, Esq.	Member
Michael Neglia	Member
Fredrick P. Potter, Jr.	Member
Anthony Scardino, Jr.	Member
Bradley I. Abelow	Ex Officio Member
Susan Bass Levin	Ex Officio Member
George Zoffinger	Ex Officio Member

**George R. Zoffinger**  
President &  
Chief Executive Office

**Dennis O. Dowd**  
Senior Vice-President  
Racing

The Meadowlands conducted 160 days of standardbred racing and 30 days of thoroughbred racing in 2007 as well as year round simulcasting on a multitude of out of state race programs.

## HARNESS

Opening its initial harness meeting on September 1, 1976, the Meadowlands soon skyrocketed to be the premier harness track in the world and New Jersey the number one harness (standardbred) breeding state in the country for many years after.

### Wagering on Meadowlands Standardbred Live Racing

<u>2005</u>	<u>2006</u>	<u>2007</u>
\$433,766,004	\$386,302,499	\$329,699,822

## THOROUGHBRED

On September 6, 1977 the Meadowlands opened its doors for its first ever thoroughbred meet to 25,158 who bet \$2,480,393.

### Wagering on Meadowlands Thoroughbred Live Racing

<u>2005</u>	<u>2006</u>	<u>2007</u>
\$41,848,976	\$63,248,612	\$57,353,990

Simulcast wagers for both breeds on out of state programs was \$306,020,687 in 2007 compared to \$337,530,702 in 2006.

## MONMOUTH PARK

Opening in 1870 Monmouth Park's summer meeting remains New Jersey's marquis event for thoroughbreds. Monmouth Park is home to the \$1 million Grade 1 "Haskell Invitational" which remains a pivotal race after the triple crown series.

Monmouth Park conducted 79 live racing days in 2007.

### Wagering on Monmouth Park Thoroughbreds Live Racing

<u>2005</u>	<u>2006</u>	<u>2007</u>
\$258,764,507	\$241,884,292	\$370,137,280

Simulcast wagers on out of state race programs was \$126,544,305 in 2007 compared to \$128,765,538 in 2006.

## **FREEHOLD RACEWAY**

Freehold Raceway  
130 Park Avenue  
Freehold, New Jersey 07728  
732-462-3800    www.FreeholdRaceway.com

Freehold Raceway is owned and operated by Pennwood Racing

Donald R. Codey	President & General Manager
Robert Ippolito	Secretary
Francis F. McDonnell	Asst. Secretary
Lennon Register	Treasurer & Chief Financial Manager
William Clifford	Member
James Tinik	Controller
Dennis Howard	Director of Mutuels
Howard Bruno	Director of Admissions
Gary Wolff	Track Superintendent
Bill Wikoff	Director of Security
Tom Sexton	Director of Simulcasting
Mike Jaffe	Director of Food & Beverage Services
Michelle S. Dolan	Director of Human Resources
Larry Lederman	Track Announcer
Autochart, LLC	Teletimer/Photo Finish
World Wide Racing Studios	Track Photographer

Freehold Raceway actually opened in 1853 and is the oldest continuous daytime harness track in the country.

Freehold Raceway conducted 192 live racing programs in 2007, racing standardbreds only over the country's fastest half mile oval.

### **Wagering on Freehold Live Harness Racing**

<u>2005</u>	<u>2006</u>	<u>2007</u>
\$140,154,320	\$133,188,283	\$ 118,758,018

Simulcast wagers on out of state racing programs were \$100,031,264 in 2007 compared to \$103,039,420 in 2006.



## ATLANTIC CITY RACE COURSE

Atlantic City Race Course  
4501 Blackhorse Pike  
Mays Landing, New Jersey 08833  
609-641-2190

Atlantic City Race Course is owned and operated by Greenwood Racing, Inc.

Bill Hogwood	CEO, Greenwood Racing Inc.
Joe Wilson	COO, Greenwood Racing Inc.
Anthony Ricci	Chief Financial Officer, Greenwood Racing, Inc.
Maureen Bugdon	President, Atlantic City Race Course
Jim Miller	AC Racebook, General Manager
Sal Sinatra	General Manager Live Racing
Bill Gatto	Director of Grounds and Facilities
Mary Jo Coutts	Assistant Director of Operations
Gerry Snyder	Office Manager

Atlantic City Race Course opened in 1946 and raced harness and thoroughbreds until 1976, when the first full season of thoroughbred night racing at any major track became a reality. On September 28, 1983, the nations first simulcast was transmitted from the Meadowlands to Atlantic City Race Course.

Atlantic City Race Course raced 4 live thoroughbred racing programs in 2007.

### Wagering on Atlantic City Live Racing

<u>2005</u>	<u>2006</u>	<u>2007</u>
\$412,528	\$692,858	\$731,283

Simulcast wagering on out of state programs was \$21,771,519 in 2007 compared to \$22,218,948 in 2006.

### Wagering at Casinos

Wagering on horse racing also occurs at Atlantic City casinos. Eight "race books" accept wagers on races run in New Jersey and out of state. All bets are commingled with the host racetrack, via the Data Center in Mount Laurel, producing uniform pay-outs.

The amount wagered during the year at these facilities totaled \$110,617,856 this represents a 3.1 % decrease from last year's total of \$114,134,411. By law, a portion of the commissions generated by these wagers is earmarked for deposit into the Casino Simulcast Special Fund for distribution to racetracks and industry-specific funds.

Pari-mutuel activity generated in 2007 at the casinos range from \$ 3,385,177 at the Trump Marina to \$37,755,770 at the Borgata.

Account wagering completed its first full year in 2006 with \$51,935,127 wagered on the internet compared to \$64,319,014 in 2007. Phone wagers totaled 9,045,307 in 2006 compared to \$12,287,206 in 2007.

Through December 31, 2007, wagering at New Jersey racetracks totaled \$876,680,393. Wagers made outside New Jersey on New Jersey races totaled \$554,367,774, resulting in a total handle of \$1,431,048,167. This represents a 0.8% increase when compared with the 12 month totals from last year.

Attendance during live racing totaled 1,705,199 through December 31, 2007.

NJRC's FY 2007 budget totaled \$9,768,874. It is comprised of \$637,114 in licensing revenue and \$377,025 in revenue from uncashed tickets. The balance of \$8,754,735 is generated from direct assessments to the racing industry.

NJRC's Equine Drug Testing Program is administered at the New Jersey State Police Forensic Science Laboratory located at the Meadowlands racetrack. A staff of 14 chemists use modern testing equipment and methods to detect the presence of illegal substances in horses. In 2007, 24,894 blood samples and 8,524 urine samples were collected and tested resulting in 11 violations of the Commission's medication rules. In addition, 6,926 blood gas samples from standardbreds were collected resulting in 1 positive.

The Commission also randomly tests jockeys and drivers for the presence of illegal drugs. It also tests for alcohol abuse by race participants and officials. In 2007, 7 positives were detected from 848 samples tested.

#### **NEW JERSEY HORSE RACING INJURY COMPENSATION RACING BOARD**

The Commission encouraged the creation of this Board that provides low cost group workers' compensation insurance for the horse racing industry. The Board consists of representatives of the public and private sector including members of horse race organizations, insurance providers, state insurance departments, and the NJRC. The program covers employees of the Board, namely drivers, jockeys and exercise riders with 2007 premiums established at over \$1.5 million.

#### **THOROUGHBRED ORGANIZATIONS**

*Thoroughbred Horsemen's Association of New Jersey*, a not-for-profit corporation which advocates thoroughbred racing in the State. It provides general administrative services to its members including a group health benefits program.

*Thoroughbred Breeders Association of New Jersey* is an organization devoted to promoting and enhancing the breeding of New Jersey thoroughbreds. The Racing Commission administers the Breeders Award Program that provides monetary incentives to owners and breeders by offering purse enhancements for races for New Jersey breds.

**STANDARD BRED ORGANIZATIONS**

*Standardbred Breeders and Owners Association of New Jersey* is a not-for-profit organization dedicated to advancing the cause of standardbred racing in the State. It provides general administrative services to its members including a group health benefits program.

*New Jersey Sires Stakes*, an agency within the State Department of Agriculture, promotes the owning and breeding of New Jersey standardbreds. Nearly \$11 million in purse money is devoted to Sires Stake races restricted to horses sired by stallions resident in New Jersey. The program is funded by distributions from pari-mutuel handle at harness tracks and from nominating and sustaining payments by horse owners.

**NEW JERSEY  
2007 THOROUGHBRED RACING DATES**

Atlantic City Race Course

April 25, April 26, May 2, May 3 4 Dates

Monmouth Park

May 12, 13, 19, 20, 26, 27, 28  
June 1 through September 2 79 Dates  
October 24, 25, 26, 27 (Breeders Cup)

Dark: Mondays and Tuesdays

Meadowlands Racetrack

September 3, 7, 8  
September 11 through November 10 41 Dates

Dark: Sundays and Mondays  
Tuesday, November 6  
October 23 through October 27, October 30 \_\_\_\_\_

Total Thoroughbred Dates: 124 Dates

Total Programs: 468 Dates  
*(Thoroughbred and Harness)*

